

FINISHES:

MAIN STRUCTURE: STAINLESS STEEL

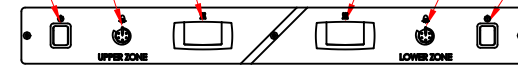
FOOD SAFE POWDER COATED BLACK (RAL 9005)

ALTERNATIVE RAL COLOUR OPTION (DCOL2)

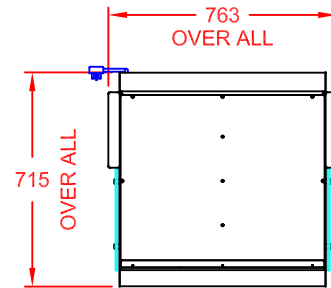
END GLASS: 6mm CLEAR TOUGHENED

WIRE GRIDS: 304 GRADE STAINLESS STEEL

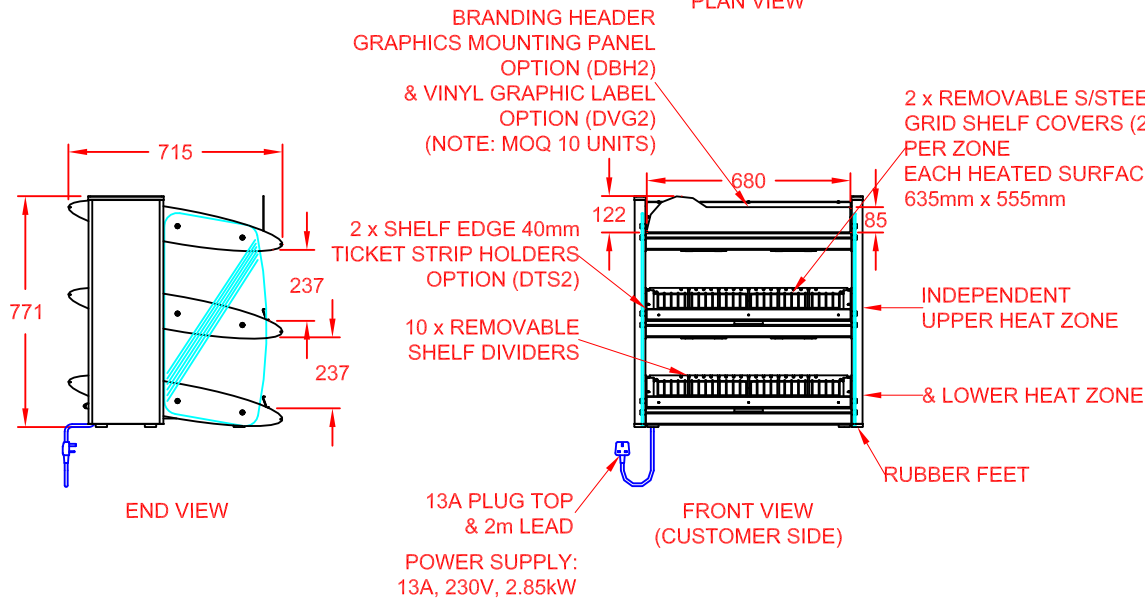
UPPER ZONE BASE HEAT CONTROLLER
UPPER ZONE INFRARED HEAT DIMMER
UPPER ZONE POWER SWITCH
LOWER ZONE BASE HEAT CONTROLLER
LOWER ZONE INFRARED HEAT DIMMER
LOWER ZONE POWER SWITCH



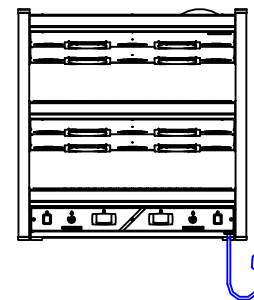
CONTROL PANEL DETAIL



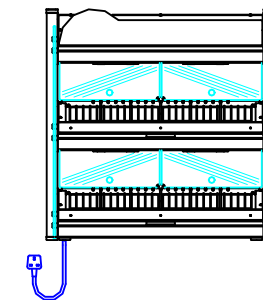
PLAN VIEW



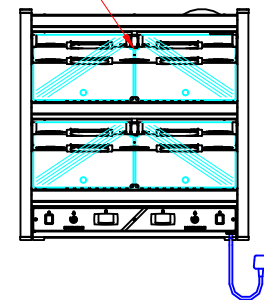
FRONT VIEW
(CUSTOMER SIDE)



REAR VIEW
(OPERATOR SIDE)



FRONT VIEW
(CUSTOMER SIDE)
c/w REAR DOOR OPTION



REAR VIEW
(OPERATOR SIDE)
c/w REAR DOOR OPTION

APPROX. UN-CRATED
WEIGHT OF UNIT: 31Kg



CED FABRICATIONS LTD
UNITS A1-A4, FALCON COURT
CLAYTON BUSINESS PARK
CLAYTON-LE-MOORS
HYNDBURN
LANCASHIRE BB5 5JD

This drawing and information herein is confidential to CED Fabrications Ltd. It is issued in confidence that it will not be disclosed to any third party in part or in whole without permission from CED FABRICATIONS Ltd.

© CED FABRICATIONS LTD



DESCRIPTION:

DESIGNLINE
2-1 G_n TABLE TOP HEATED
MERCHANDISER
c/w ALL OPTIONS

SCALE: 1 : 2.5 @ A4 REV No:

PRODUCT
CODE: DTTHM2