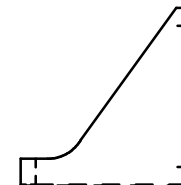
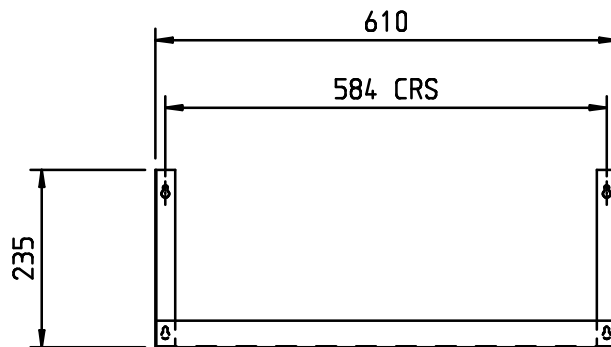
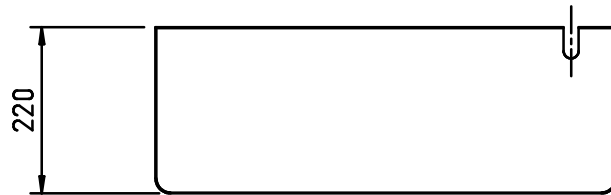


# ITEM BS65/22

## MATERIAL SPECIFICATIONS

WORKTOPS - 1.5mm 304 GRADE ST ST  
 FRAMEWORK - 30 x 30 BOX SECTION 430 GRADE ST ST  
 UNDERSHELVES - 1.2mm 430 GRADE ST ST  
 OVERSHELVES - 1.2mm 430 GRADE ST ST  
 FEET - ADJUSTABLE FLANGED (CAST ALUMINIUM)  
 PANELWORK - 0.9mm 430 GRADE ST ST



**MATERIAL:**  
**1.2mm THK 304 GRADE ST ST**

PLEASE CONFIRM THERE IS SUITABLE ACCESS TO SITE FOR DELIVERY OF THIS ITEM

APPROVED FOR  
 MANUFACTURE

Signature..... Date..... Print.....

DO NOT SCALE DRAWING

CUST Ref:

REV  
 No

REVISION

DATE

### TOLERANCE TABLE

|      |         |
|------|---------|
| 1    | ± 2mm   |
| 1.0  | ± 0.5mm |
| 1.00 | ± 0.2mm |

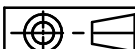
UNLESS STATED OTHERWISE



CED FABRICATIONS LTD  
 A1-A4 FALCON COURT  
 PETRE ROAD  
 CLAYTON-LE-MOORS  
 HYNDURN  
 LANCASHIRE BB5 5JD

This drawing and information herein is confidential to CED Fabrications Ltd. It is issued in confidence that it will not be disclosed to any third party in part or in whole without permission from CED FABRICATIONS Ltd.

© 1999 CED FABRICATIONS LTD



TITLE: BS65-22 Bar CED BLENDER SHELF 650

REV No: 0

DRAWN BY:

CUST O/No:

DRG No: **BS65/22**

DATE: 06/06/2016 15:55:26

SCALE: 1:10 (A4)