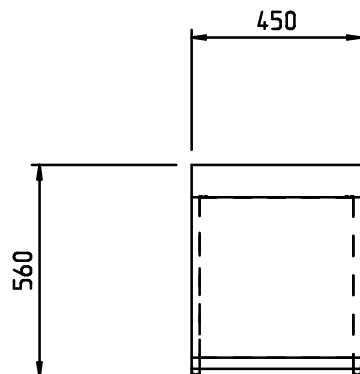


ITEM PTS45W

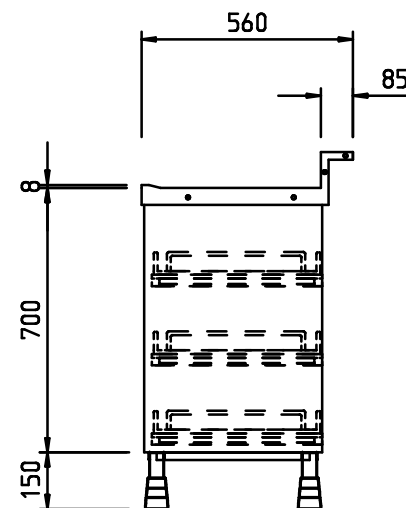
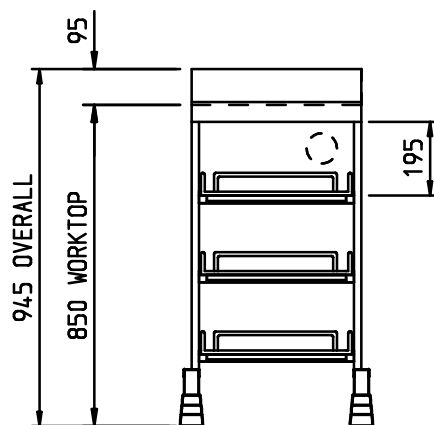
MATERIAL SPECIFICATIONS

WORKTOPS - 1.5mm 304 GRADE ST ST
 FRAMEWORK - 30 x 30 BOX SECTION 430 GRADE ST ST
 UNDERSHELVES - 1.2mm 430 GRADE ST ST
 OVERSHELVES - 1.2mm 430 GRADE ST ST
 FEET - ADJUSTABLE FLANGED (CAST ALUMINIUM)
 PANELWORK - 0.9mm 430 GRADE ST ST



Height of unit is 945mm but can be adjusted by 25mm either up or down with the adjustable feet

All units supplied with with one leg set only
 Extra leg sets may be required to suit bar run.



PLEASE CONFIRM THERE IS SUITABLE ACCESS TO SITE FOR DELIVERY OF THIS ITEM

APPROVED FOR
MANUFACTURE

Signature..... Date..... Print.....

DO NOT SCALE DRAWING

CUST Ref:

REV
No

REVISION

DATE

TOLERANCE TABLE

1	± 2mm
1.0	± 0.5mm
1.00	± 0.2mm

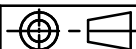
UNLESS STATED OTHERWISE



CED FABRICATIONS LTD
 A1-A4 FALCON COURT
 PETRE ROAD
 CLAYTON-LE-MOORS
 HYNDURN
 LANCASHIRE BB5 5JD

This drawing and information herein is confidential to CED Fabrications Ltd. It is issued in confidence that it will not be disclosed to any third party in part or in whole without permission from CED FABRICATIONS Ltd.

© 1999 CED FABRICATIONS LTD



TITLE: PTS45W BarCED PLAIN TOP SHELVING UNIT WITH WIRE RACKS 450

REV No:

DRAWN BY:

CUST O/No:

DRG No: **PTS45W**

DATE: 15/06/2016 11:58:38

SCALE: 1:20 (A4)