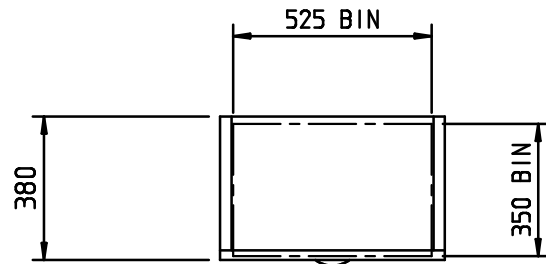


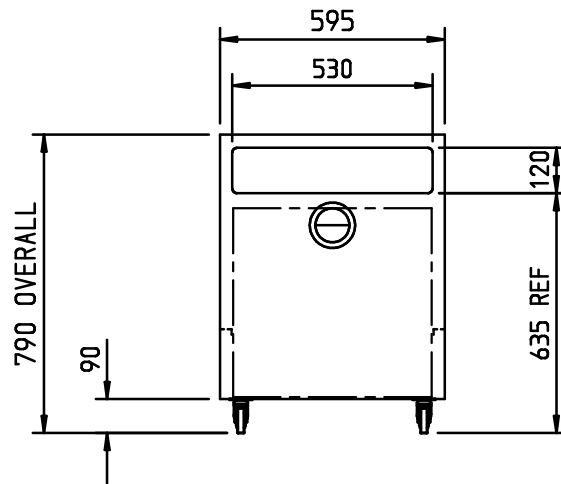
ITEM RUB65

MATERIAL SPECIFICATIONS

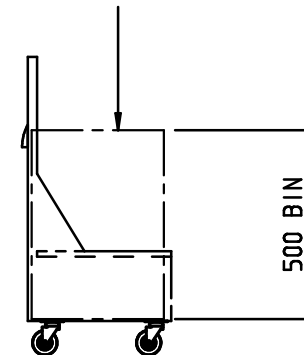
WORKTOPS - 1.5mm 304 GRADE ST ST
 FRAMEWORK - 30 x 30 BOX SECTION 430 GRADE ST ST
 UNDERSHELVES - 1.2mm 430 GRADE ST ST
 OVERSHELVES - 1.2mm 430 GRADE ST ST
 FEET - ADJUSTABLE FLANGED (CAST ALUMINIUM)
 PANELWORK - 0.9mm 430 GRADE ST ST



Mobile Bin: Stainless steel Bin size 525 x 350 x 500



STAINLESS STEEL
 BIN (NOT SEALED)



PLEASE CONFIRM THERE IS SUITABLE ACCESS TO SITE FOR DELIVERY OF THIS ITEM

APPROVED FOR
 MANUFACTURE

Signature..... Date..... Print.....

DO NOT SCALE DRAWING

CUST Ref:

REV
 No

REVISION

DATE

TOLERANCE TABLE

1	± 2mm
1.0	± 0.5mm
1.00	± 0.2mm

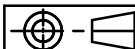
UNLESS STATED OTHERWISE



CED FABRICATIONS LTD
 A1-A4 FALCON COURT
 PETRE ROAD
 CLAYTON-LE-MOORS
 HYNDURN
 LANCASHIRE BB5 5JD

This drawing and information herein is confidential to CED Fabrications Ltd. It is issued in confidence that it will not be disclosed to any third party in part or in whole without permission from CED FABRICATIONS Ltd.

© 1999 CED FABRICATIONS LTD



TITLE: RUB65 BarCED ROLL UNDER BIN 650

REV No:

DRAWN BY:

CUST O/No:

DRG No: **RUB65**

DATE: 15/06/2016 14:56:25

SCALE: 1:20 (A4)