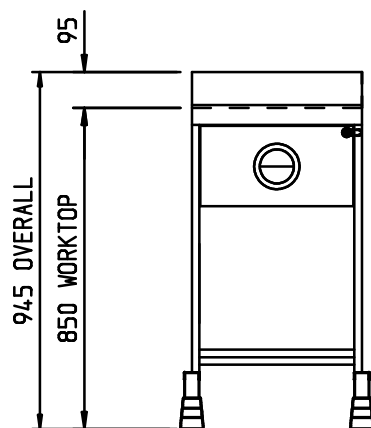
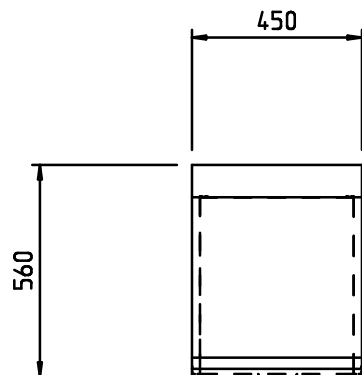
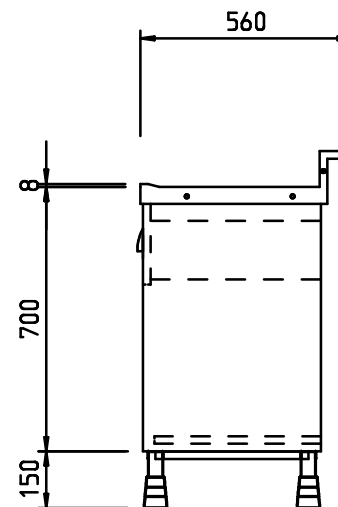


# ITEM SD 45



Height of unit is 945mm but can be adjusted by 25mm either up or down with the adjustable feet

All units supplied with with one leg set only  
Extra leg sets may be required to suit bar run.



## MATERIAL SPECIFICATIONS

WORKTOPS - 1.5mm 304 GRADE ST ST  
FRAMEWORK - 30 x 30 BOX SECTION 430 GRADE ST ST  
UNDERSHELVES - 1.2mm 430 GRADE ST ST  
OVERSHELVES - 1.2mm 430 GRADE ST ST  
FEET - ADJUSTABLE FLANGED (CAST ALUMINIUM)  
PANELWORK - 0.9mm 430 GRADE ST ST

PLEASE CONFIRM THERE IS SUITABLE ACCESS TO SITE FOR DELIVERY OF THIS ITEM

APPROVED FOR  
MANUFACTURE

Signature..... Date..... Print.....

DO NOT SCALE DRAWING

CUST Ref:

REV  
No

REVISION

DATE

### TOLERANCE TABLE

1	± 2mm
1.0	± 0.5mm
1.00	± 0.2mm

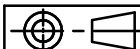
UNLESS STATED OTHERWISE



CED FABRICATIONS LTD  
A1-A4 FALCON COURT  
PETRE ROAD  
CLAYTON-LE-MOORS  
HYNDBURN  
LANCASHIRE BB5 5JD

This drawing and information herein is confidential to CED Fabrications Ltd. It is issued in confidence that it will not be disclosed to any third party in part or in whole without permission from CED FABRICATIONS Ltd.

© 1999 CED FABRICATIONS LTD



TITLE: SD 45 BarCED PLAIN TOP DRAWER UNIT 450

REV No:

DRAWN BY:

CUST O/No:

DRG No: **SD 45**

DATE: 16/06/2016 09:47:44

SCALE: 1:20 (A4)