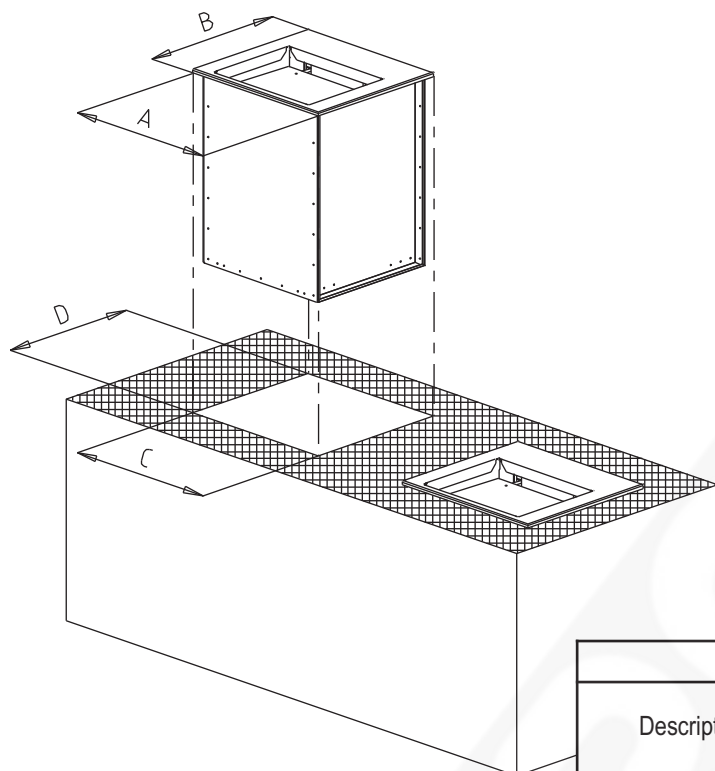


## BUILT-IN CONSTANT LEVEL GLASS OR TRAY DISPENSERS



### GENERAL SPECIFICATIONS:

- Made of food quality stainless steel.
- Support top made of stainless steel with 6 guide rollers.
- Plate lift via 6 return springs.
- Handling level adjusted by adding or removing springs.
- Baskets max. dimensions 500 x 500 mm for the glass dispenser.
- Trays max. dimensions 460 x 360 mm for the tray dispenser.

Description	reference	Net weight	Weight including packing	Dimensions (mm)			
				A	B	C	D
Glass dispenser	808 236	39	54	680	730	650	710
Tray dispenser	808 237	34	49	640	590	610	570

