



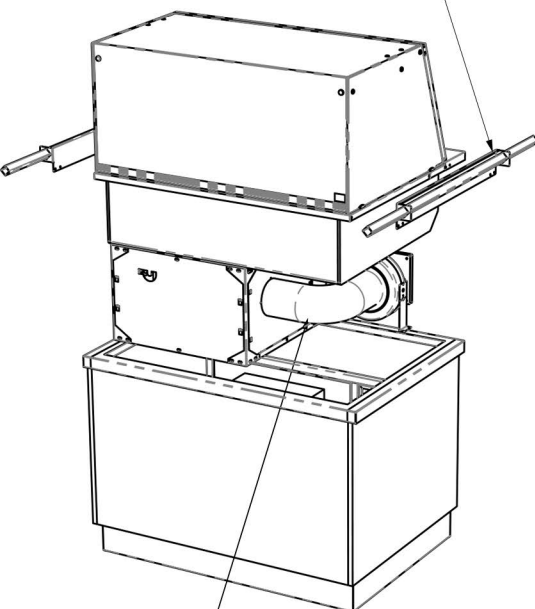
## General Installation Considerations

- 1) Area in which display is to be sited must have a minimum room floor area no less than 17 sq m (SCDDL2ASHT & SCDDL3ASHT), 20 sq m (SCDDL4ASHT) or 28 sq m (SCDDL5ASHT).
- 2) Install over a sealed floor or ventilated floor void.
- 3) Do not site the display within 2m of ceiling mounted air conditioning grilles.
- 4) Do not site the display beneath a high level of direct sunlight.
- 5) Display will operate in a 24 hour environment.
- 6) Access to maintain condensing unit should be made via removable fascia panels or doors to customer and operator side of counter.

### A) WORKTOP CUT-OUT

| Model Ref.      | Worktop Cut Out Size (mm) |       | Model Weight (in Kg) |
|-----------------|---------------------------|-------|----------------------|
|                 | Length                    | Width |                      |
| SCDDL2ASHT+SAF2 | 795                       | 825   | 133                  |
| SCDDL3ASHT+SAF2 | 1145                      | 825   | 156                  |
| SCDDL4ASHT+SAF2 | 1495                      | 825   | 187                  |
| SCDDL5ASHT+SAF2 | 1845                      | 825   | 220                  |

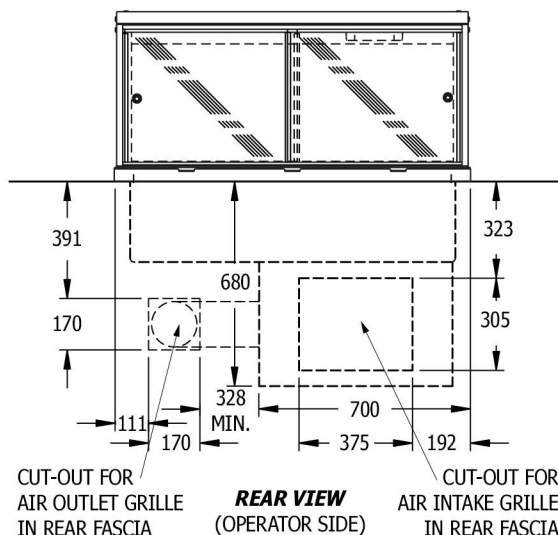
FIX LIFTING BRACKETS TO FRAME END FLANGES USING SCREWS ALREADY IN FLANGES, THEN LOCATE LIFTING BARS INTO SQUARE HOLES.



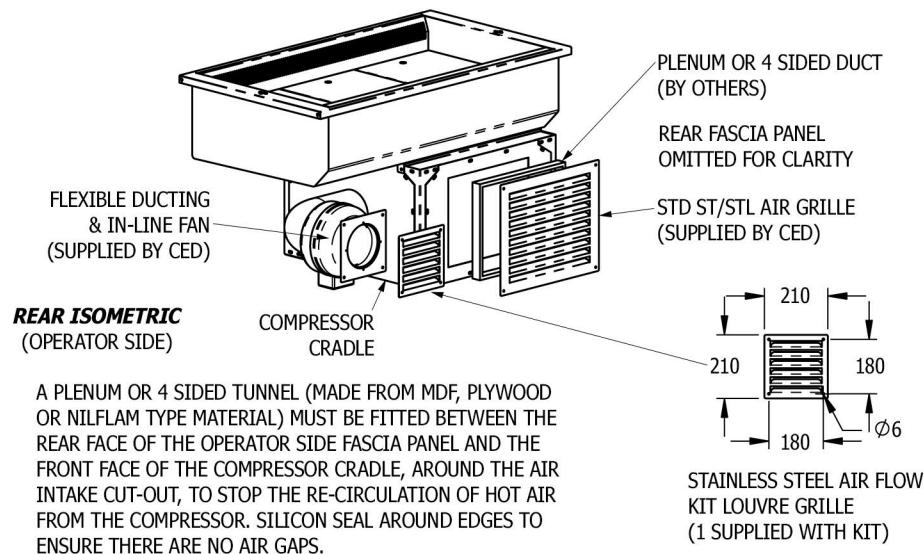
FLEXIBLE DUCTING & IN-LINE FAN SUPPLIED LOOSE. RE-ATTACH FLEXIBLE DUCTING & IN-LINE FAN TO SIDE OF COMPRESSOR CRADLE ONCE UNIT HAS BEEN DROPPED INTO PLACE. ELECTRICALLY CONNECT FAN TO CONTROL BOX WITH "KETTLE PLUG"

**FRONT ISOMETRIC**  
(CUSTOMER SIDE)

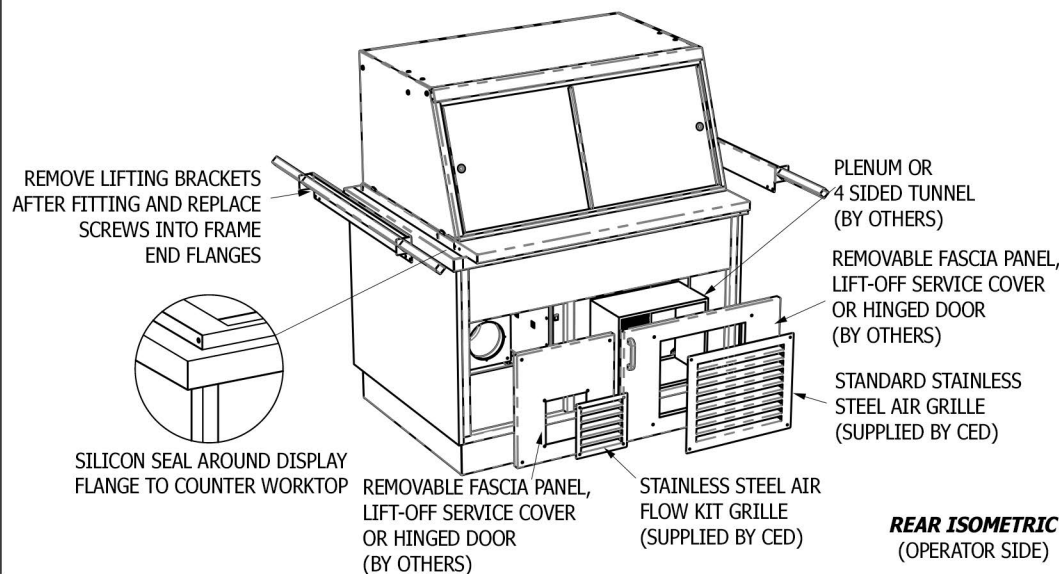
### B) AIR INTAKE & OUTLET CUT-OUTS (OPERATOR SIDE FASCIA PANEL)



### D) AIR INTAKE TUNNEL / PLENUM FITTING (OPERATOR SIDE FASCIA PANEL)



### C) FITTING INTO COUNTER WORKTOP



### E) FITTING OF LOUVRE GRILLES

