



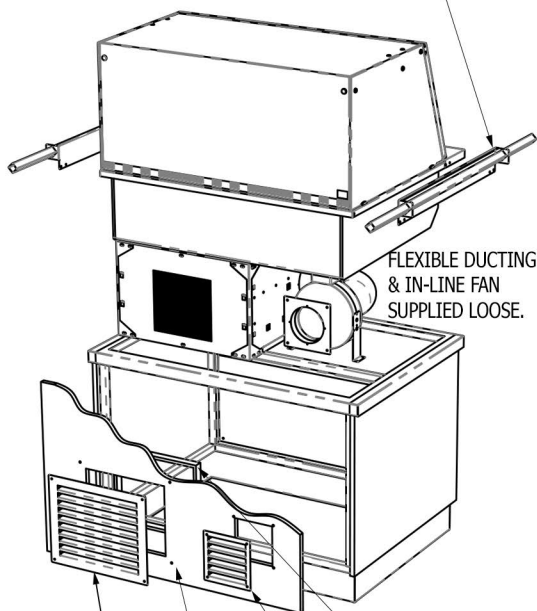
General Installation Considerations

- Area in which display is to be sited must have a minimum room floor area no less than 17 sq m (SCDDL2ASHT & SCDDL3ASHT), 20 sq m (SCDDL4ASHT) or 28 sq m (SCDDL5ASHT).
- Install over a sealed floor or ventilated floor void.
- Do not site the display within 2m of ceiling mounted air conditioning grilles.
- Do not site the display beneath a high level of direct sunlight.
- Display will operate in a 24 hour environment.
- Access to maintain condensing unit should be made via removable fascia panels or doors to customer and operator side of counter.

A) WORKTOP CUT-OUT

Model Ref.	Worktop Cut Out Size (mm)		Model Weight (in Kg)
	Length	Width	
SCDDL2ASHT+SAF1	795	825	133
SCDDL3ASHT+SAF1	1145	825	156
SCDDL4ASHT+SAF1	1495	825	187
SCDDL5ASHT+SAF1	1845	825	220

FIX LIFTING BRACKETS TO FRAME END FLANGES USING SCREWS ALREADY IN FLANGES, THEN LOCATE LIFTING BARS INTO SQUARE HOLES.



FLEXIBLE DUCTING & IN-LINE FAN SUPPLIED LOOSE.

REMOVABLE FASCIA PANEL (BY OTHERS)

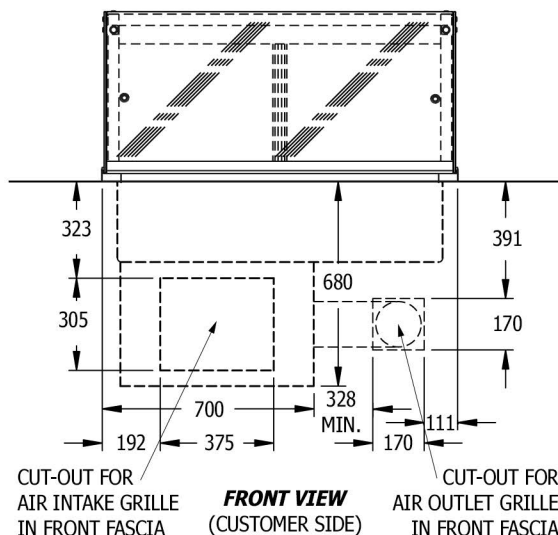
PLENUM OR 4 SIDED TUNNEL (BY OTHERS)

STANDARD STAINLESS STEEL AIR GRILLE (SUPPLIED BY CED)

STAINLESS STEEL AIR FLOW KIT GRILLE (SUPPLIED BY CED)

FRONT ISOMETRIC
(CUSTOMER SIDE)

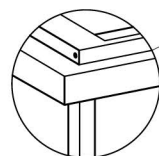
B) AIR INTAKE & OUTLET CUT-OUTS (CUSTOMER SIDE FASCIA PANEL)



C) FITTING INTO COUNTER WORKTOP

RE-ATTACH FLEXIBLE DUCTING & IN-LINE FAN TO SIDE OF COMPRESSOR CRADLE ONCE UNIT HAS BEEN DROPPED INTO PLACE. ELECTRICALLY CONNECT FAN TO CONTROL BOX WITH "KETTLE PLUG"

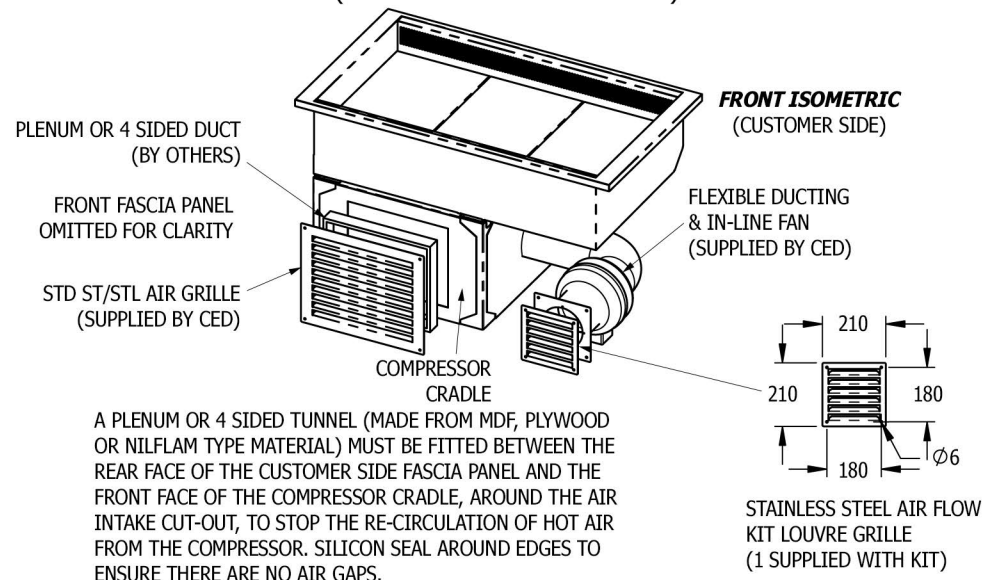
REMOVE LIFTING BRACKETS AFTER FITTING AND REPLACE SCREWS INTO FRAME END FLANGES



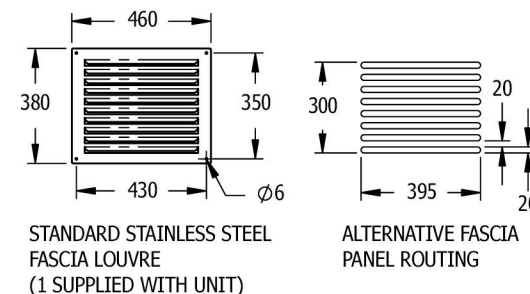
SILICON SEAL AROUND DISPLAY FLANGE TO COUNTER WORKTOP

REAR ISOMETRIC
(OPERATOR SIDE)

D) AIR INTAKE TUNNEL / PLENUM FITTING (CUSTOMER SIDE FASCIA PANEL)



E) FITTING OF LOUVRE GRILLES



Tel. 01254 238 282 Fax. 01254 238 228
e-mail: aftersales@cedlimited.com