



1) Area in which display is to be sited must have a minimum room floor area not less than 17 sq m (SCDL2ASHT & SCDL3ASHT), 20 sq m (SCDL4ASHT) or 28 sq m (SCDL5ASHT).

General Installation Considerations

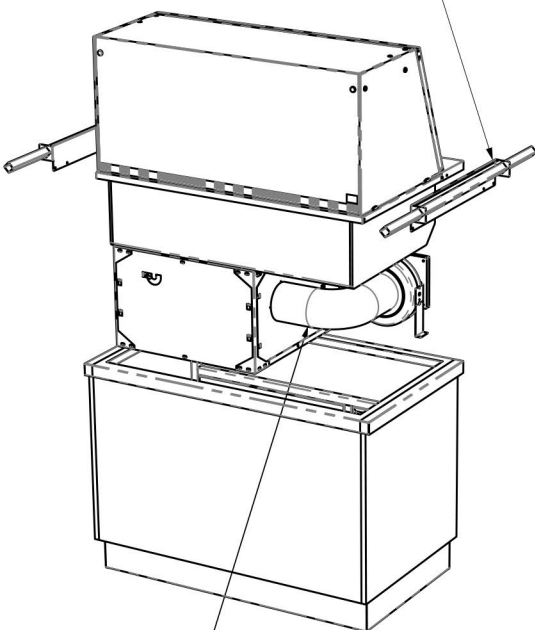
2) Install over a sealed floor or ventilated floor void.
 3) Do not site the display within 2m of ceiling mounted air conditioning grilles.
 4) Do not site the display beneath a high level of direct sunlight.

5) Display will operate in a 24 hour environment.
 6) Access to maintain condensing unit should be made via removable fascia panels or doors to customer and operator side of counter.

A) WORKTOP CUT-OUT

Model Ref.	Worktop Cut Out Size (mm)		Model Weight (in Kg)
	Length	Width	
SCDL2ASHT+SAF2	795	650	119
SCDL3ASHT+SAF2	1145	650	141
SCDL4ASHT+SAF2	1495	650	172
SCDL5ASHT+SAF2	1845	650	205

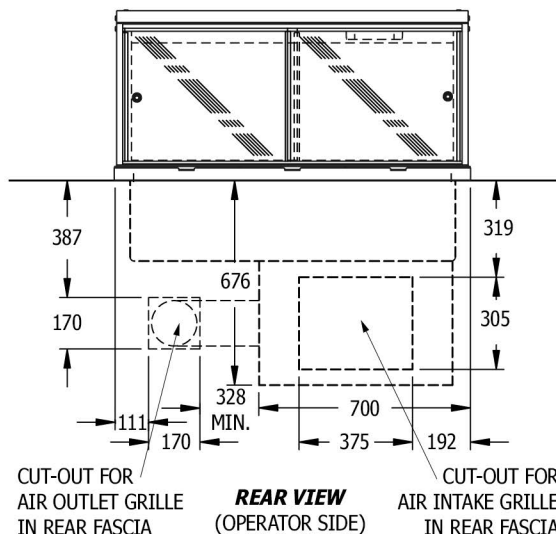
FIX LIFTING BRACKETS TO FRAME END FLANGES USING SCREWS ALREADY IN FLANGES, THEN LOCATE LIFTING BARS INTO SQUARE HOLES.



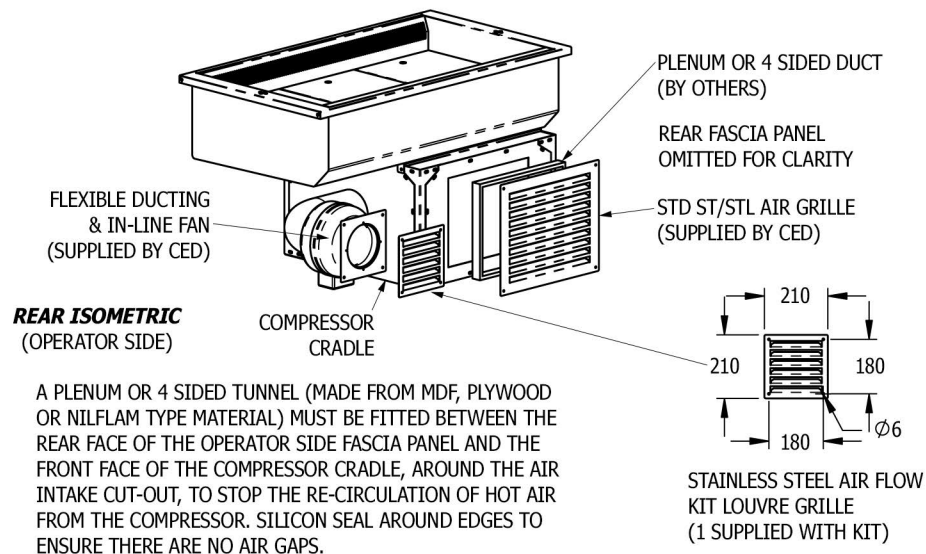
FLEXIBLE DUCTING & IN-LINE FAN SUPPLIED LOOSE. RE-ATTACH FLEXIBLE DUCTING & IN-LINE FAN TO SIDE OF COMPRESSOR CRADLE ONCE UNIT HAS BEEN DROPPED INTO PLACE. ELECTRICALLY CONNECT FAN TO CONTROL BOX WITH "KETTLE PLUG"

FRONT ISOMETRIC
(CUSTOMER SIDE)

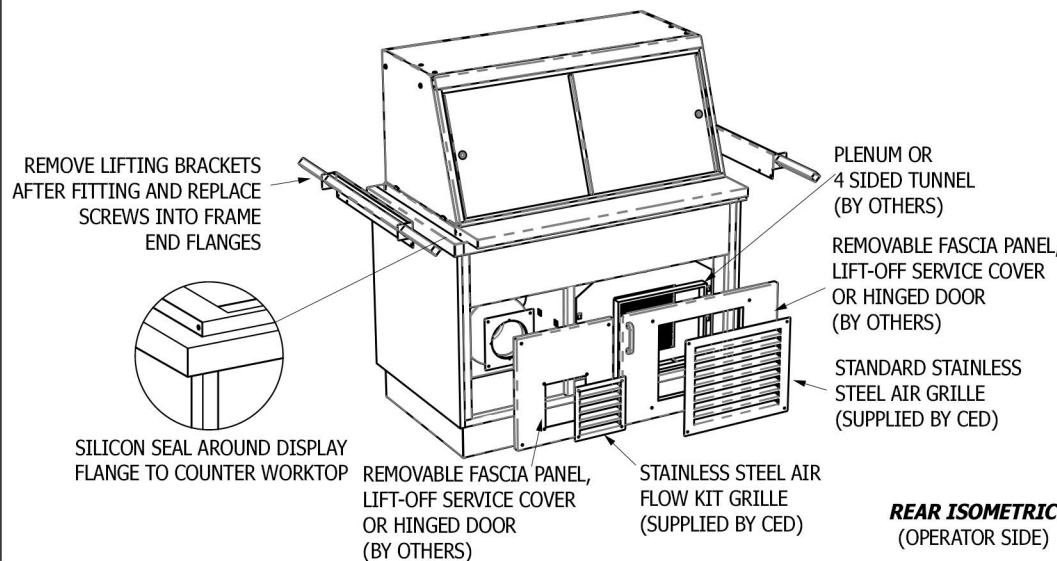
B) AIR INTAKE & OUTLET CUT-OUTS (OPERATOR SIDE FASCIA PANEL)



D) AIR INTAKE TUNNEL / PLENUM FITTING (OPERATOR SIDE FASCIA PANEL)



C) FITTING INTO COUNTER WORKTOP



E) FITTING OF LOUVRE GRILLES

