



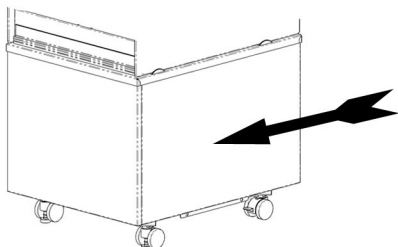
# AMBIENT PATISSERIE - ALL MODELS - FITTING INSTRUCTIONS

MODELS: PA6,9,12  
PA6,9,12FB & PA6,9,12AS

## FREE-STANDING APPLICATION

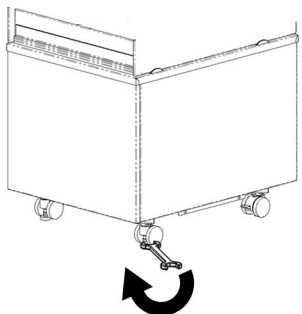
### A) ROLL UNIT INTO POSITION

UNIT SUPPLIED WITH CASTORS



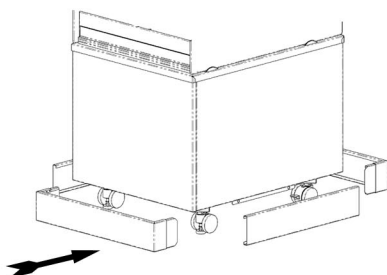
### B) ADJUST UNIT HEIGHT

USING SUPPLIED SPANNER  
(ENSURE THE HALF NUT IS WOUND FULLY UPWARDS)



### C) FIT KICK PLINTH

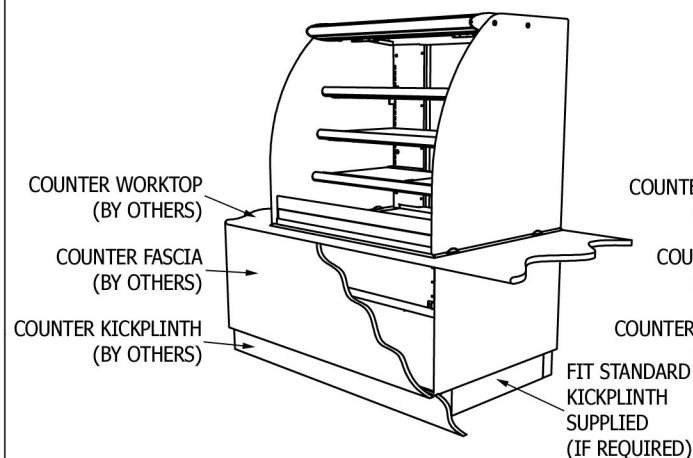
FRONT & REAR LOCATES WITH MAGNETS



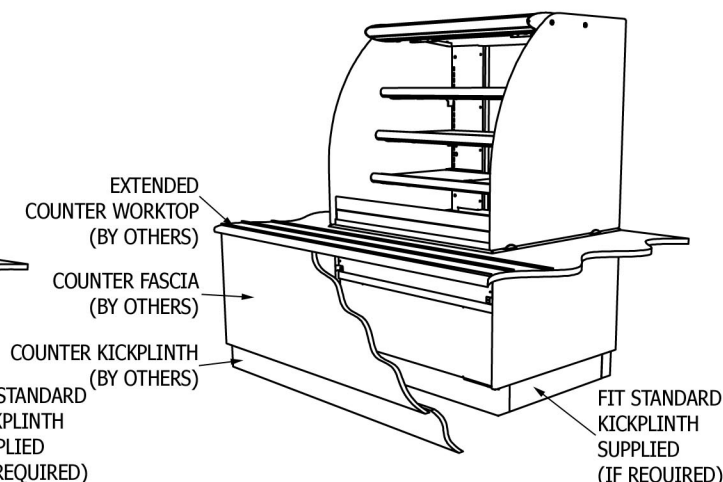
NOTE: OPTIONAL KICKPLINTH IS SUITABLE  
FOR LOWEST ADJUSTED UNIT HEIGHT

## COUNTER LOCATED APPLICATION

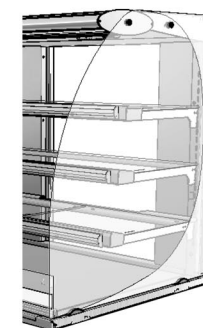
### FLUSH FITTING FASCIA PANEL



### STAND-OFF FASCIA PANEL



## FITTING SHELVES



LOCATE SHELF SUPPORT BRACKETS  
INTO REAR SLOTS AT HEIGHT &  
ANGLE TO SUIT PRODUCTS  
(NOTE: SHORTEST BRACKETS AT TOP  
AND LONGEST BRACKETS AT BTM).  
REST GLASS SHELVES ONTO RUBBER  
BUMPERS ON SHELF SUPPORTS.  
(NOTE HALF-LENGTH SHELVES ARE  
LOCATED ON BOTTOM TO ALLOW  
FOR TALLER BOTTLES ON DECK)



Tel. 01254 238 282 Fax. 01254 238 228  
e-mail: [aftersales@cedlimited.com](mailto:aftersales@cedlimited.com)