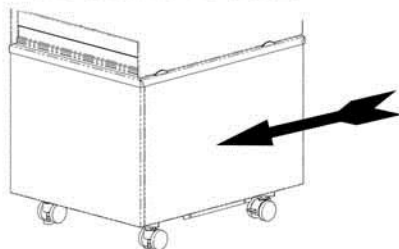


FREE-STANDING APPLICATION

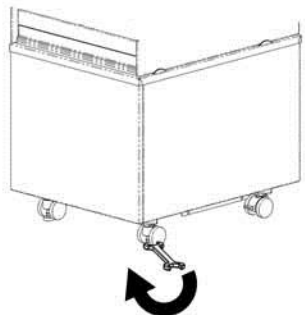
A) ROLL UNIT INTO POSITION

UNIT SUPPLIED WITH CASTORS



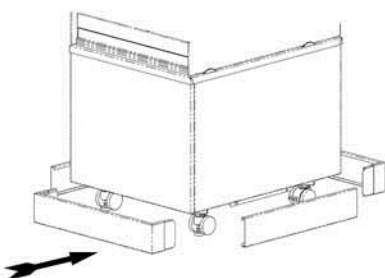
B) ADJUST UNIT HEIGHT

USING SUPPLIED SPANNER
(ENSURE THE HALF NUT IS WOUND FULLY UPWARDS)



C) FIT KICK PLINTH

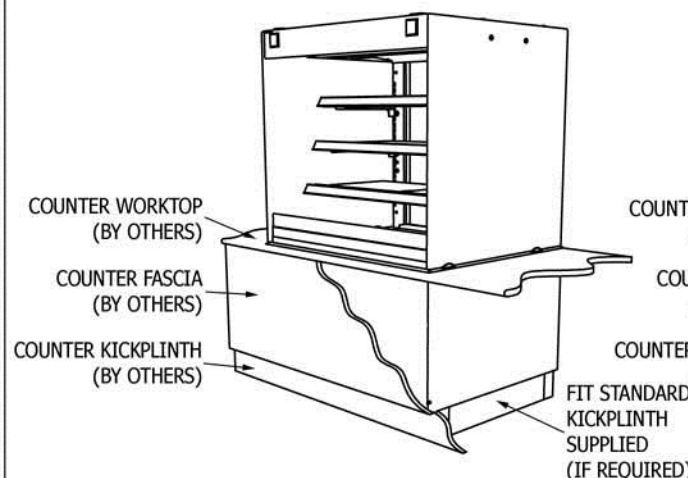
FRONT & REAR LOCATES WITH MAGNETS



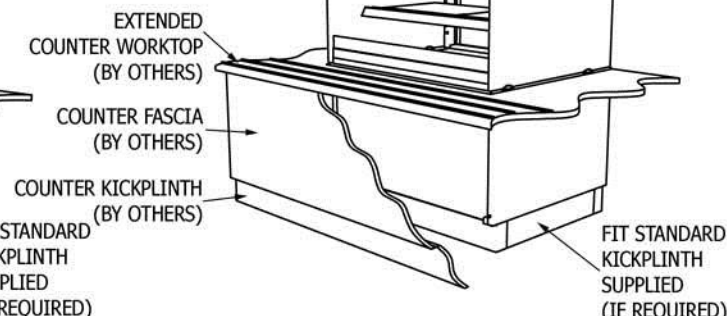
NOTE: KICKPLINTH SUPPLIED
AS STANDARD IS SUITABLE
FOR LOWEST ADJUSTED UNIT HEIGHT

COUNTER LOCATED APPLICATION

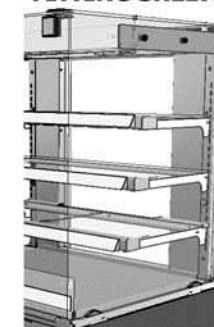
FLUSH FITTING FASCIA PANEL



STAND-OFF FASCIA PANEL



FITTING SHELVES



LOCATE SHELF SUPPORT BRACKETS INTO REAR SLOTS AT HEIGHT & ANGLE TO SUIT PRODUCTS (NOTE: SHORTEST BRACKETS AT TOP AND LONGEST BRACKETS AT BTM). REST GLASS SHELVES ONTO RUBBER BUMPERS ON SHELF SUPPORTS. (NOTE HALF-LENGTH SHELVES ARE LOCATED ON BOTTOM TO ALLOW FOR TALLER BOTTLES ON DECK)