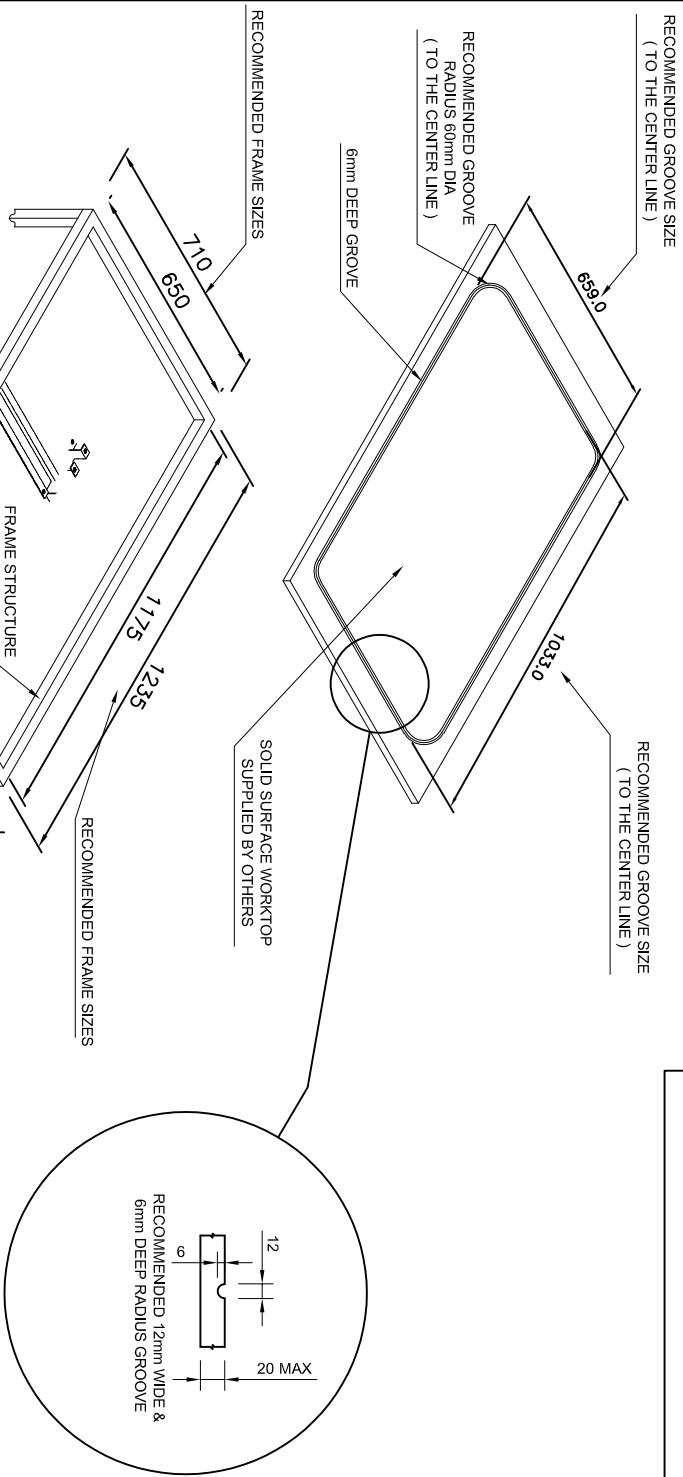
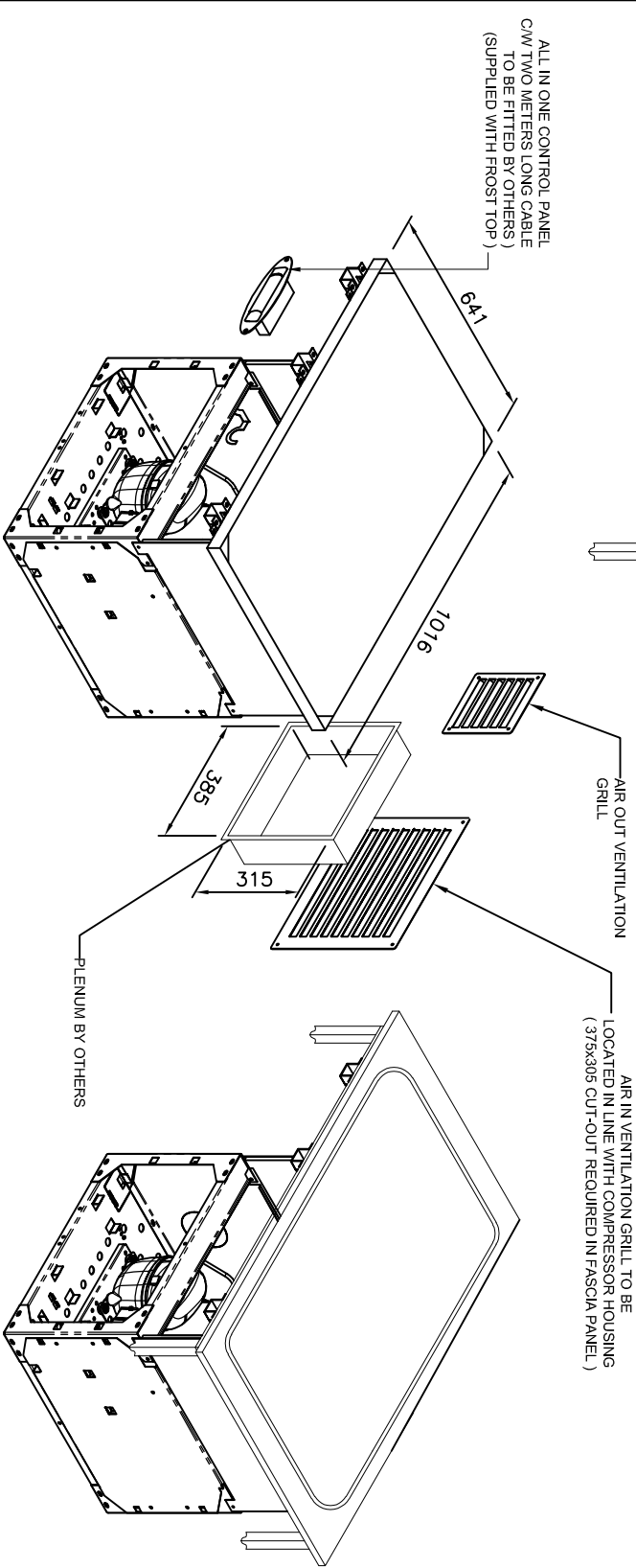


NOTE:-  
THE FROST TOP IS PRE FACTORY SET TO  
ACHIEVE TEMPERATURES BETWEEN -8 TO -10°C  
WHICH IS THE OPTIMUM TEMPERATURE FOR  
PRODUCING FROST ON THE WORKTOP.  
PLEASE CHECK WITH WORKTOP MANUFACTURER  
THAT THE MATERIAL IS ABLE TO PERFORM WITH  
IN THIS TEMPERATURE RANGE.

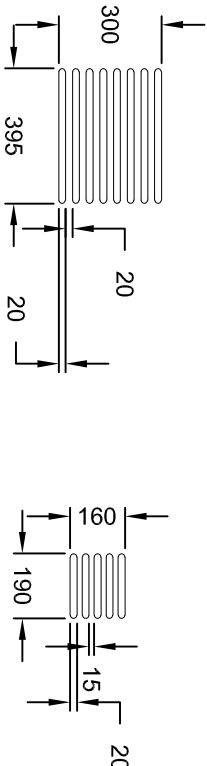
- INSTALLATION NOTES :**
- TEMPERATURE TRANSFER COMPOUND ( SUPPLIED BY - CED ) TO BE APPLIED EVENLY IN BETWEEN SOLID - SURFACE AND FROST TOP.
  - ( iii ) SILICONE NOT TO BE USED ( iii )
  - ADEQUATE DUCTING REQUIRED FOR CORRECT AIR CIRCULATION ( BY OTHERS ).
  - ELECTRICAL LOAD 3.0kw 13Amp.
  - UNIT SUPPLIED WITH 13A PLUG AND TWO METERS LONG CABLE.
  - GAS CHARGE 0.12 KG ( R290 ).



## Isometric View

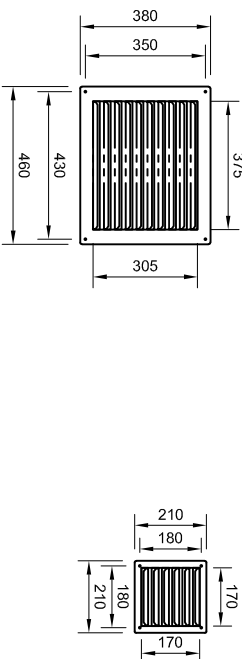


## ALTERNATE FASCIA PANEL ROUTING



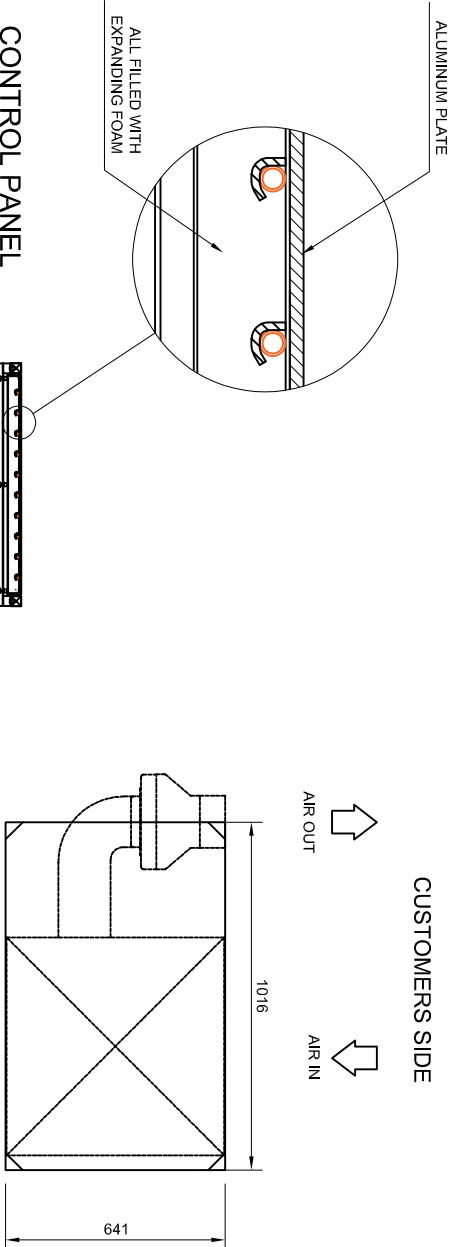
ST/STEEL VENT GRILL X2  
( SUPPLIED WITH FROST TOP )

ST/STEEL VENT GRILL AIR-OUT  
( 1 SUPPLIED WITH FROST TOP )

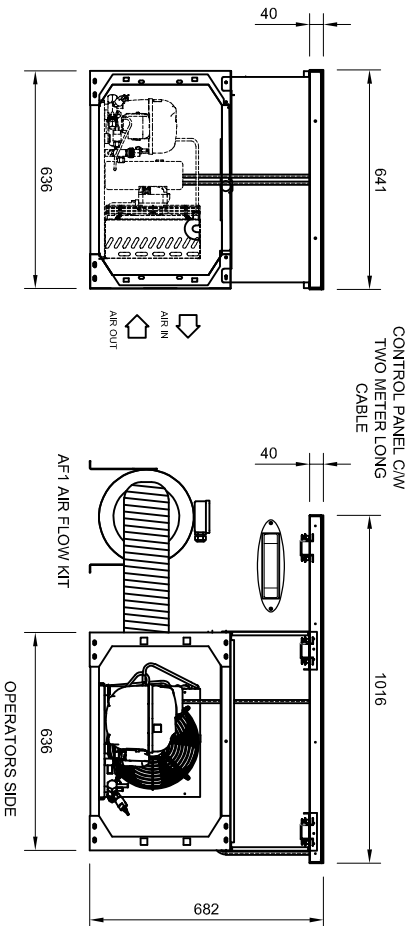
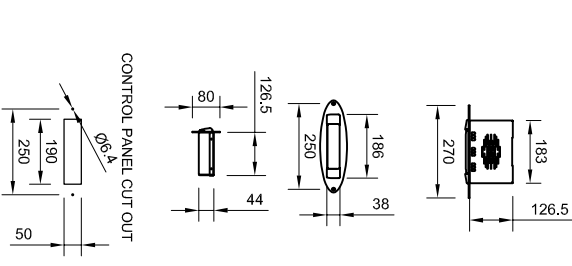


## 3-1 FROST TOP + AF1 KIT

CUSTOMERS SIDE



## CONTROL PANEL DETAIL



DRAWING STATUS

AWAITING CLIENT APPROVAL

TOLERANCE TABLE		REVISION DETAILS	
1	± 2mm		DATE
1.0	± 0.5mm		
SITE:			
CLIENT:			
DRAWN BY:		3-1 FROST TOP	REV No:
SCALE:		1:16 @ A2	DRG No:
DATE:		10/01/2020	