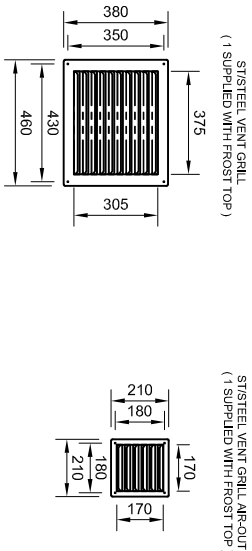
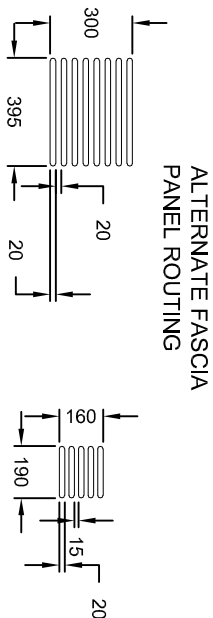
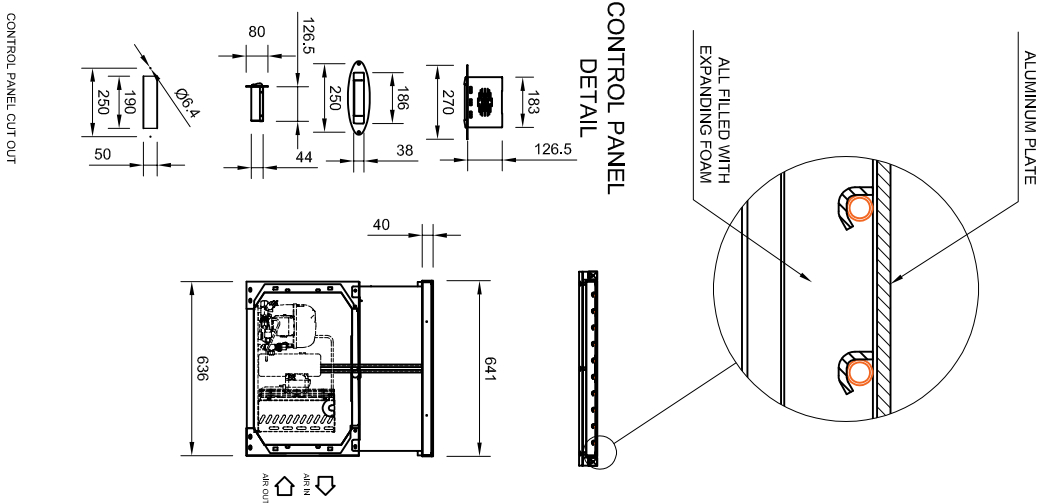
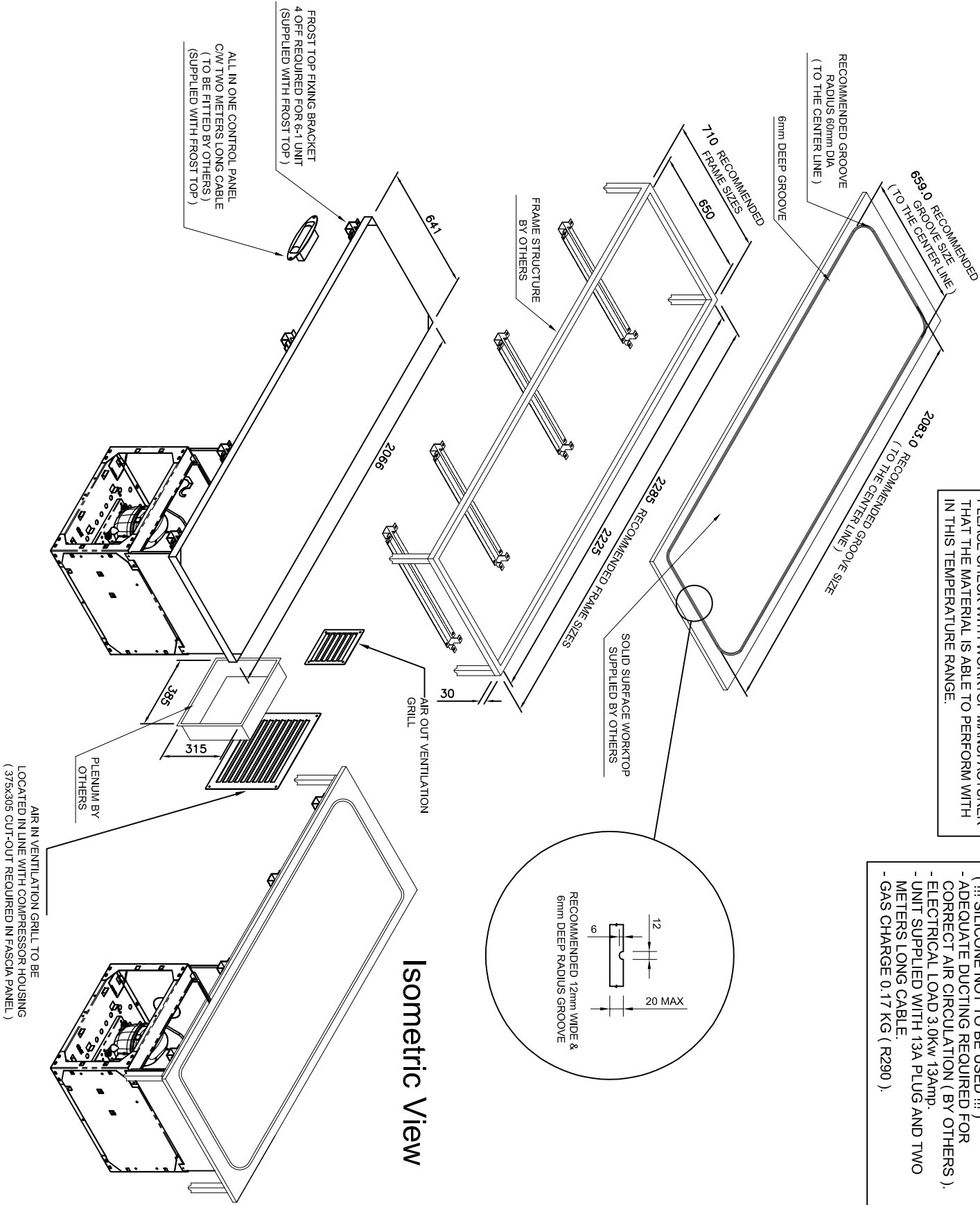
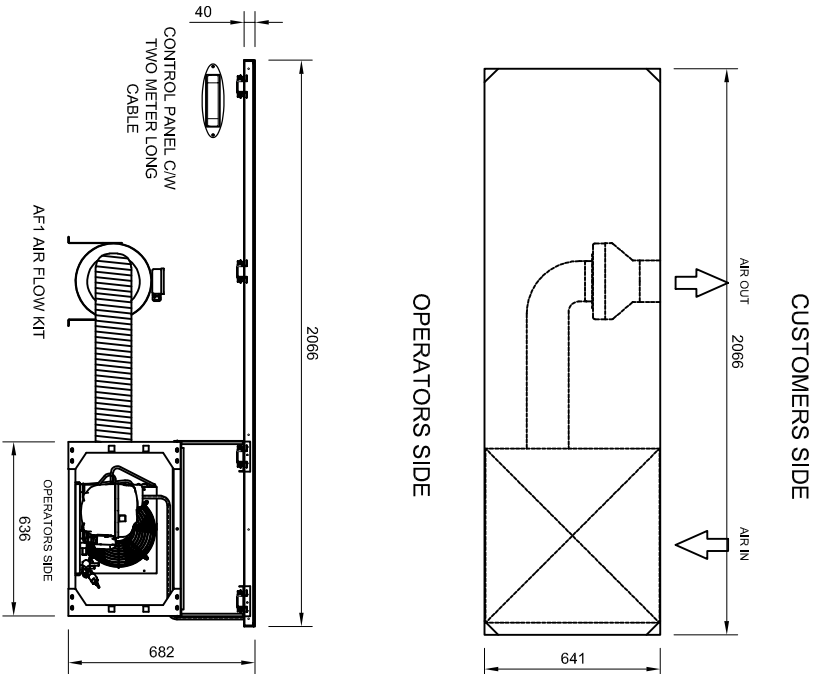


NOTE:-
THE FROST TOP IS PRE FACTORY SET TO
ACHIEVE TEMPERATURES BETWEEN -8 TO -10°C
WHICH IS THE OPTIMUM TEMPERATURE FOR
PRODUCING FROST ON THE WORKTOP.
PLEASE CHECK WITH WORKTOP MANUFACTURER
THAT THE MATERIAL IS ABLE TO PERFORM WITH
IN THIS TEMPERATURE RANGE.

- INSTALLATION NOTES :**
- TEMPERATURE TRANSFER COMPOUND (SUPPLIED BY - CED) TO BE APPLIED EVENLY IN BETWEEN SOLID SURFACE AND FROST TOP.
 - (iii) SILICONE NOT TO BE USED !!!)
 - ADEQUATE DUCTING REQUIRED FOR CORRECT AIR CIRCULATION (BY OTHERS).
 - ELECTRICAL LOAD 3.0kw 13amp.
 - UNIT SUPPLIED WITH 13A PLUG AND TWO METERS LONG CABLE.
 - GAS CHARGE 0.17 KG (R290).



6-1 Frost Top + AF-1 KIT



DRAWING STATUS AWAITING CLIENT APPROVAL

TOLERANCE TABLE		REVISION DETAILS		DATE
1	± 2mm			
1.0	± 0.5mm			
SITE:		VIRGIN LOUNGE		
CLIENT:		CATERING PROJECTS		
DRAWN BY:		IWS		
SCALE:		1:16 @ A2		
		DATE:		16/03/2020
		DRG No:		236466