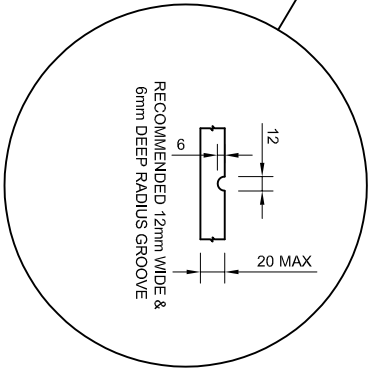
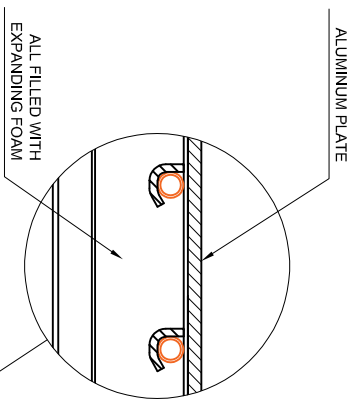
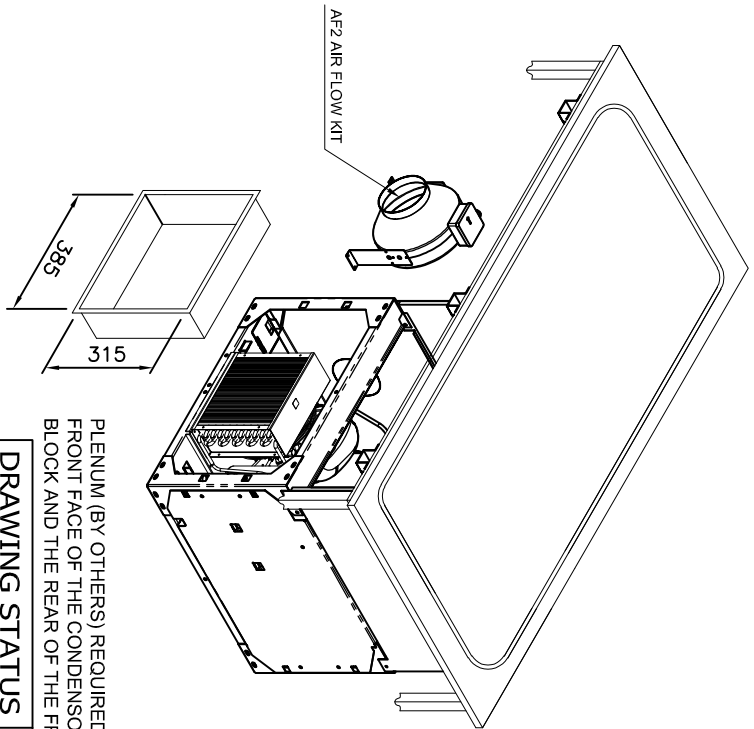
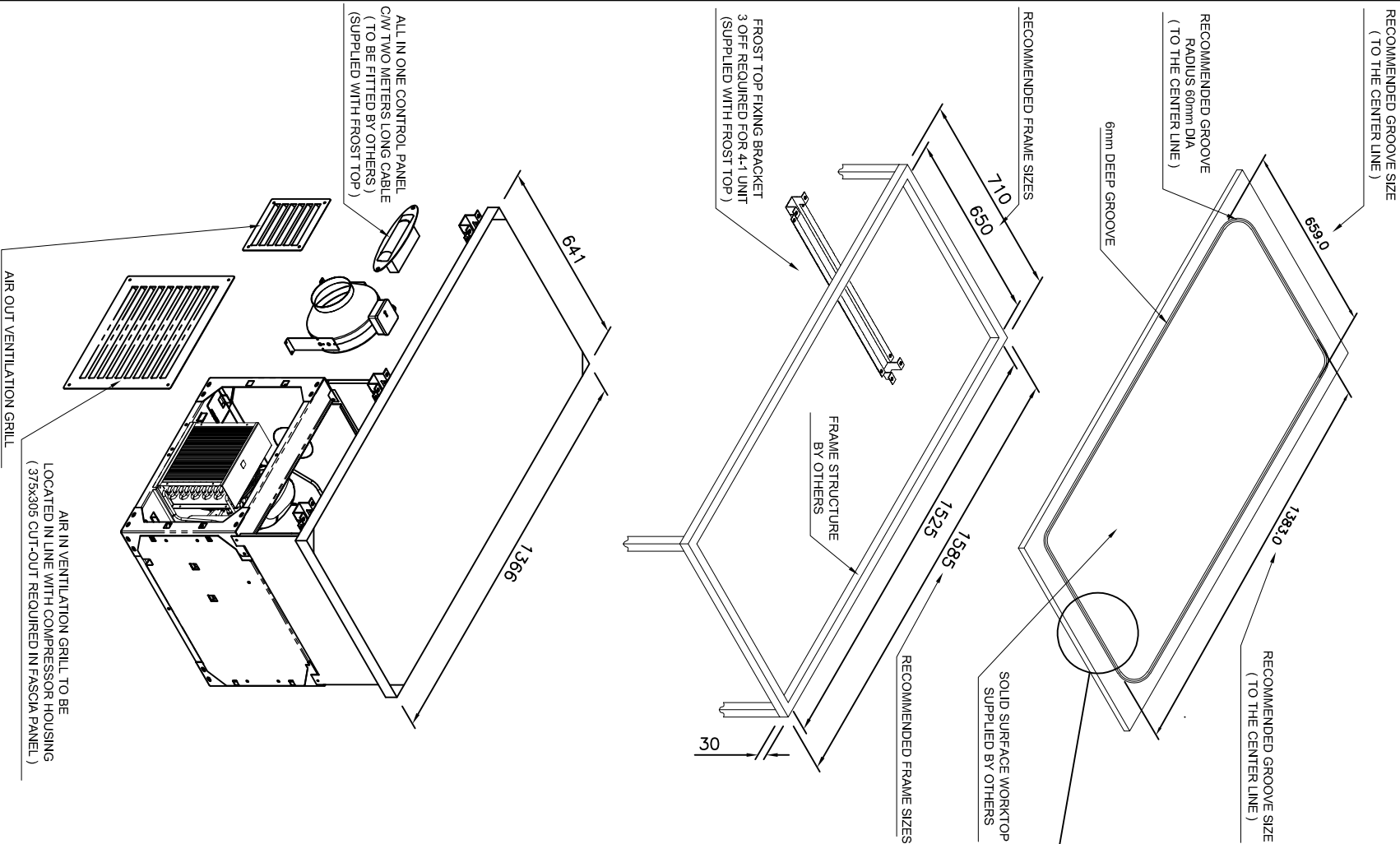


NOTE:-
THE FROST TOP IS PRE FACTORY SET TO
ACHIEVE TEMPERATURES BETWEEN -8 TO -10°C
WHICH IS THE OPTIMUM TEMPERATURE FOR
PRODUCING FROST ON THE WORKTOP.
PLEASE CHECK WITH WORKTOP MANUFACTURER
THAT THE MATERIAL IS ABLE TO PERFORM WITH
IN THIS TEMPERATURE RANGE.

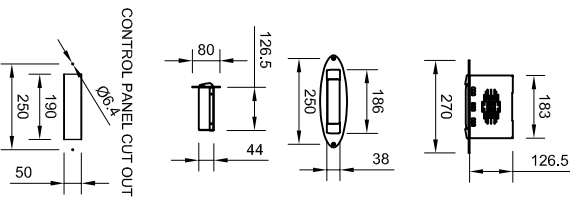
- INSTALLATION NOTES :**
- TEMPERATURE TRANSFER COMPOUND (SUPPLIED BY CED) TO BE APPLIED EVENLY IN BETWEEN SOLID SURFACE AND FROST TOP.
 - SILICONE NOT TO BE USED !!!
 - ADEQUATE DUCTING REQUIRED FOR CORRECT AIR CIRCULATION (BY OTHERS).
 - ELECTRICAL LOAD 3.0kw 13Amp.
 - UNIT SUPPLIED WITH 13A PLUG AND TWO METERS LONG CABLE.
 - GAS CHARGE 0.14 KG (R290).



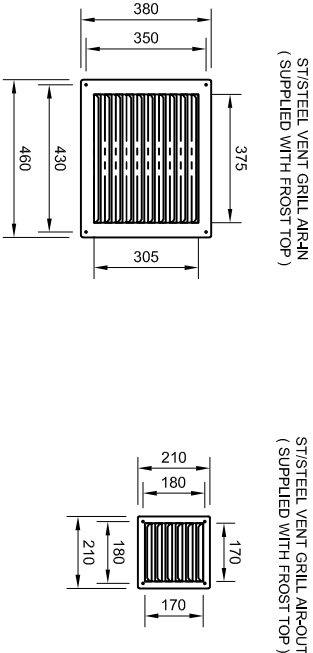
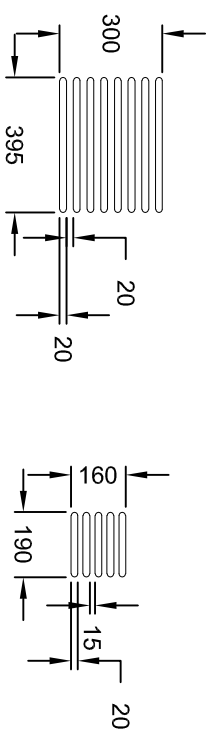
Isometric View



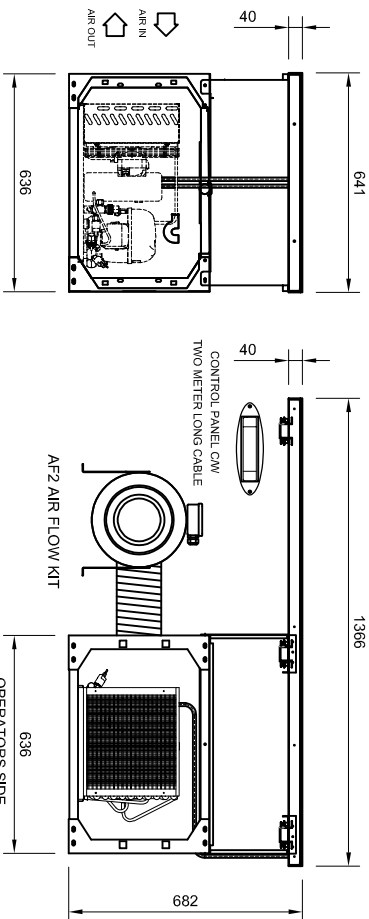
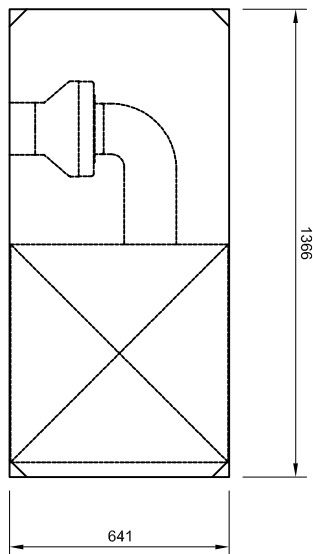
CONTROL PANEL DETAIL



ALTERNATE FASCIA PANEL ROUTING



4-1 FROST TOP + AF2 KIT



DRAWING STATUS: AWAITING CLIENT APPROVAL

TOLERANCE TABLE		REVISION DETAILS	
1	± 2mm		DATE
1.0	± 0.5mm		
SITE:			
CLIENT:			
DRAWN BY: MG		ORDER No:	REV No:
SCALE: 1:16 @ A2		DATE: 29/06/2017	
		DRG No:	