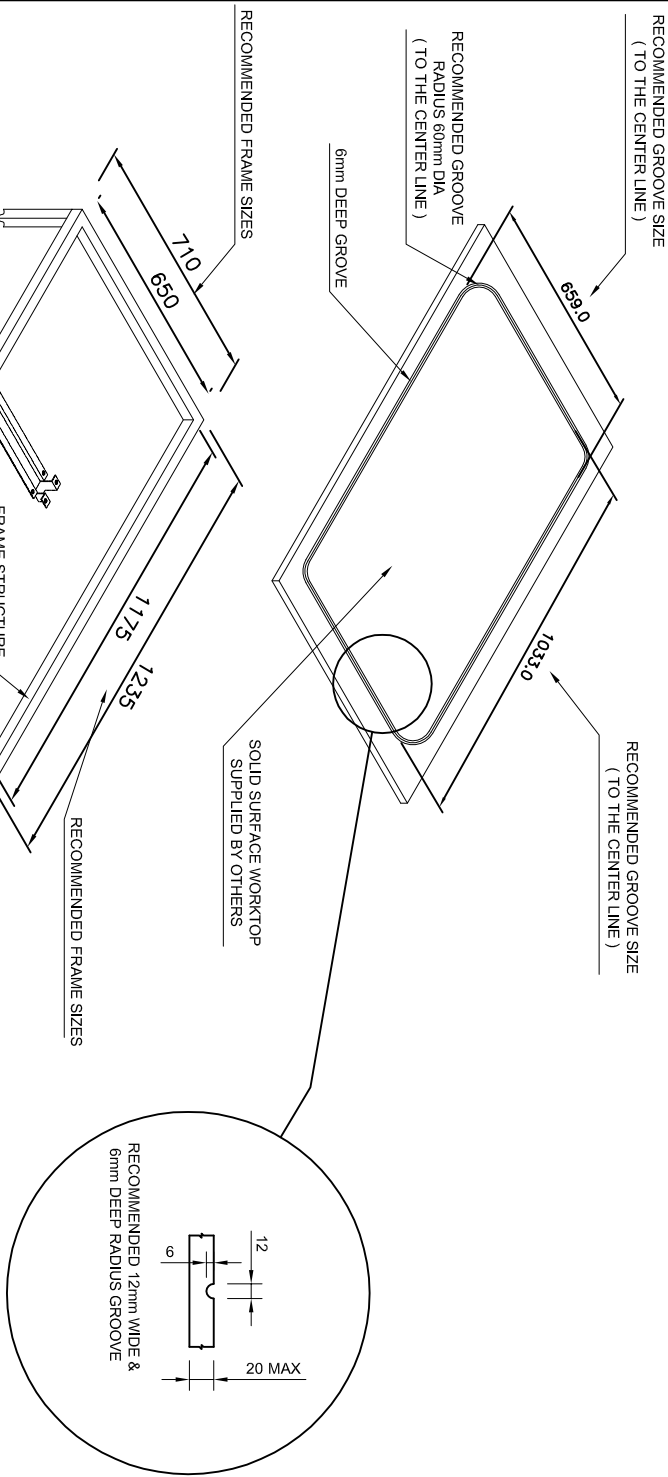
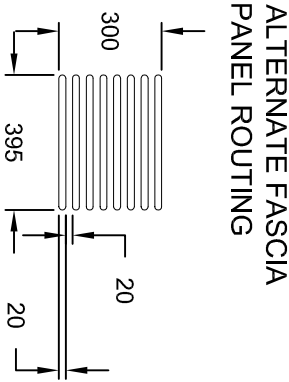
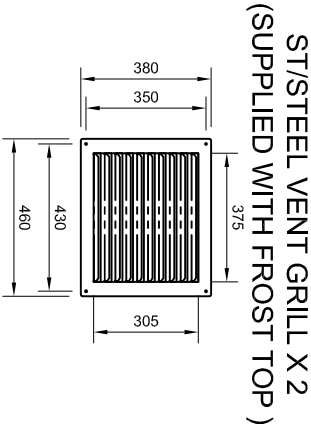


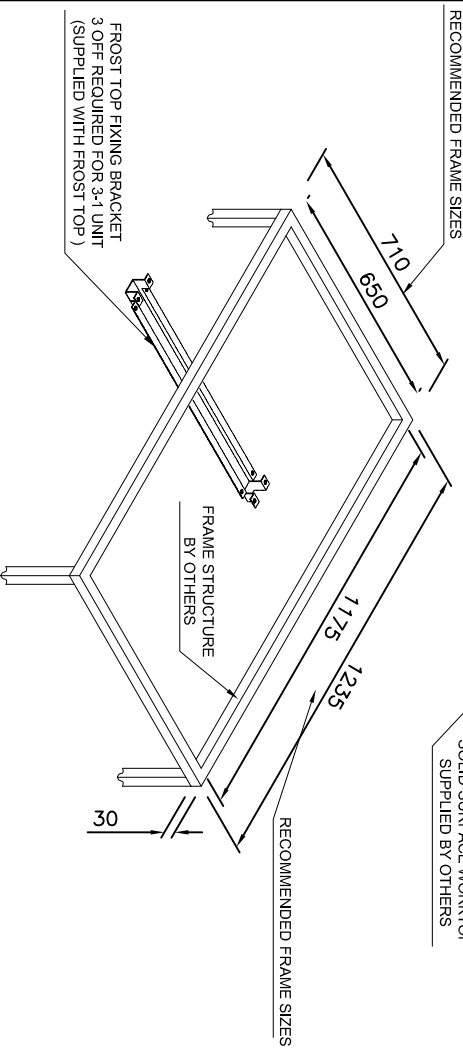
NOTE:-  
THE FROST TOP IS PRE FACTORY SET TO  
ACHIEVE TEMPERATURES BETWEEN -8 TO -10°C  
WHICH IS THE OPTIMUM TEMPERATURE FOR  
PRODUCING FROST ON THE WORKTOP.  
PLEASE CHECK WITH WORKTOP MANUFACTURER  
THAT THE MATERIAL IS ABLE TO PERFORM WITH  
IN THIS TEMPERATURE RANGE.

INSTALLATION NOTES :

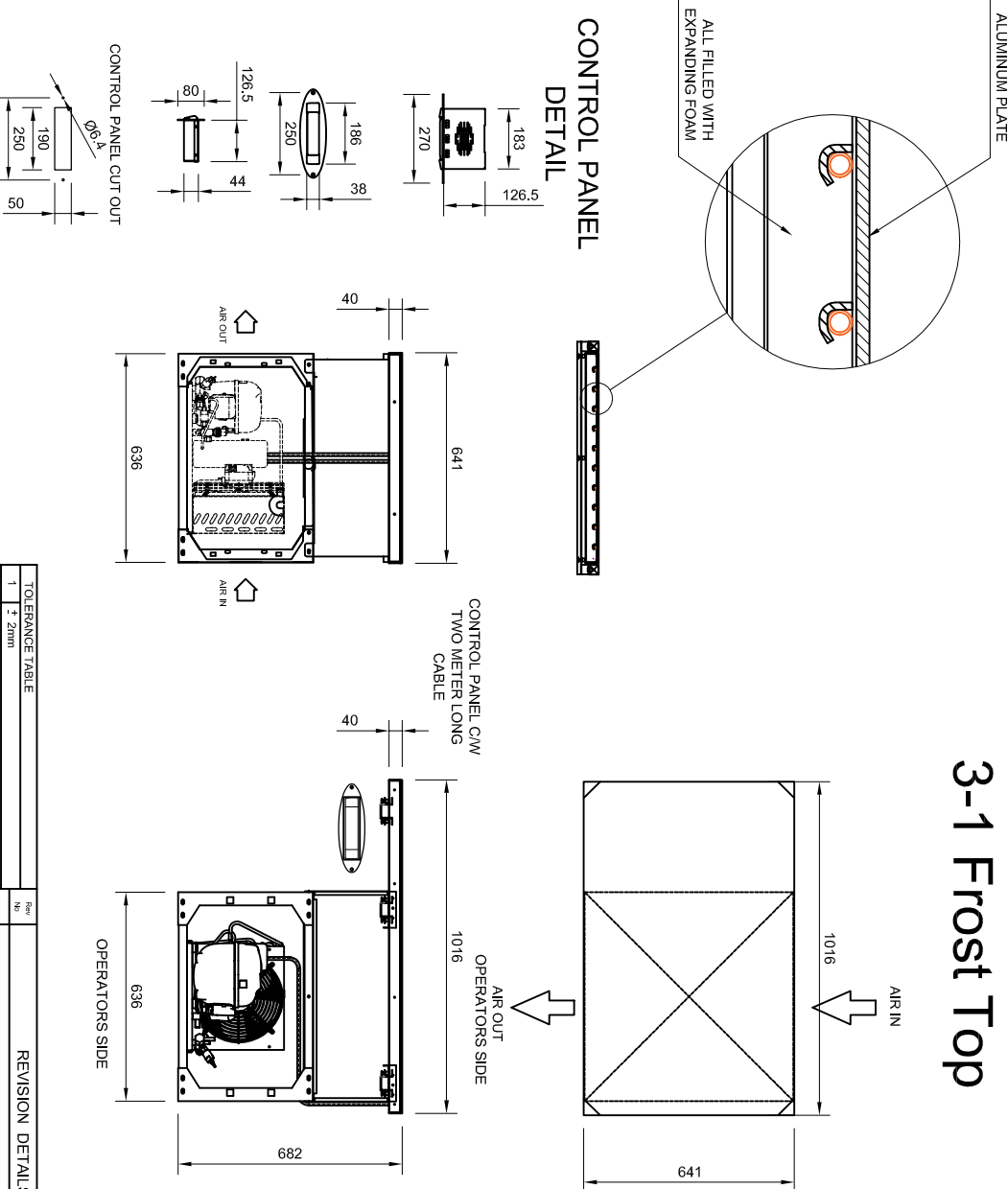
- TEMPERATURE TRANSFER COMPOUND ( SUPPLIED BY -CED ) TO BE APPLIED EVENLY IN BETWEEN SOLID SURFACE AND FROST TOP.
- ( iii ) SILICONE NOT TO BE USED (ii) )
- ADEQUATE DUCTING REQUIRED FOR CORRECT AIR CIRCULATION ( BY OTHERS ).
- ELECTRICAL LOAD 3.0kw 13Amp.
- UNIT SUPPLIED WITH 13A PLUG AND TWO METERS LONG CABLE.
- GAS CHARGE 0.12 KG ( R290 ).



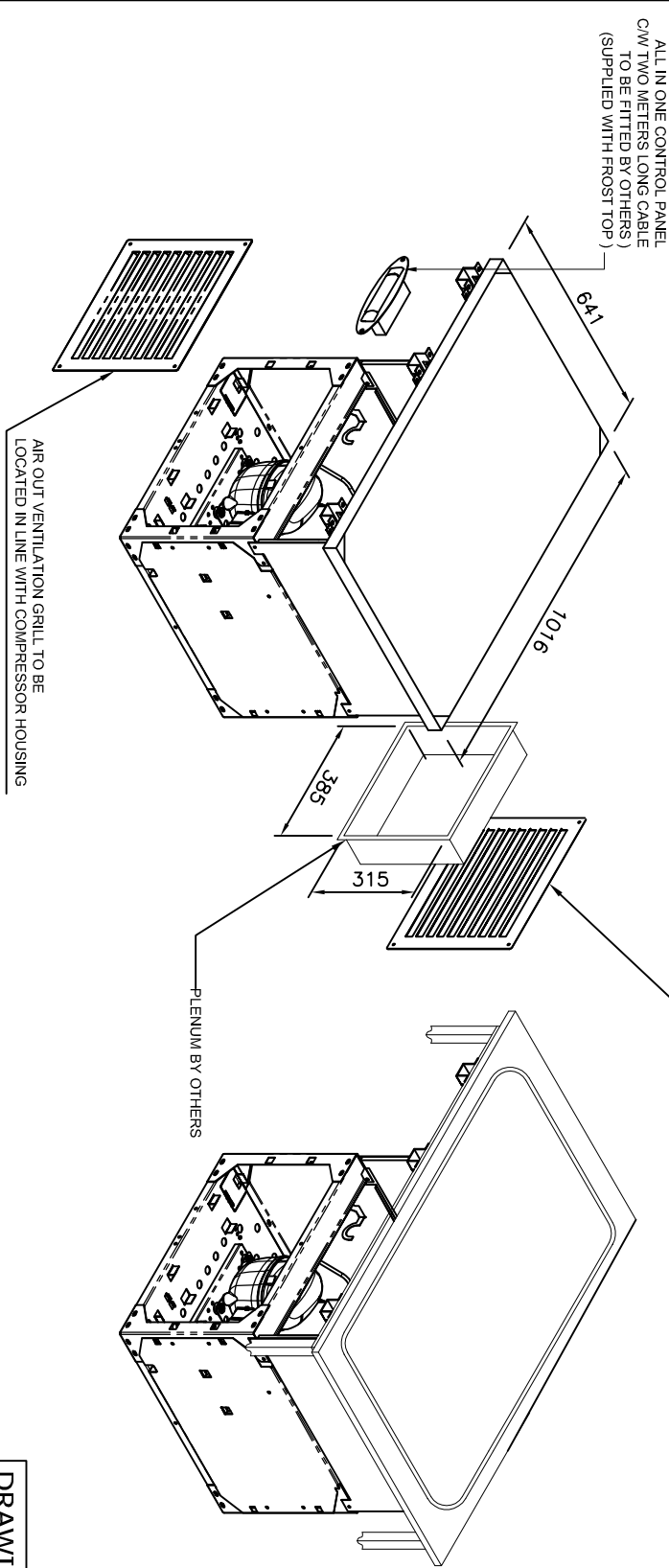
Isometric View



CONTROL PANEL  
DETAIL



3-1 Frost Top



DRAWING STATUS    AWAITING CLIENT APPROVAL

TOLERANCE TABLE		REVISION DETAILS	
1	± 2mm		DATE
1.0	± 0.5mm		
SITE:			
CLIENT:			
DRAWN BY:		3-1 FROST TOP	REV No:
SCALE:		1:16 @ A2	DRG No:
DATE:		10/01/2020	