

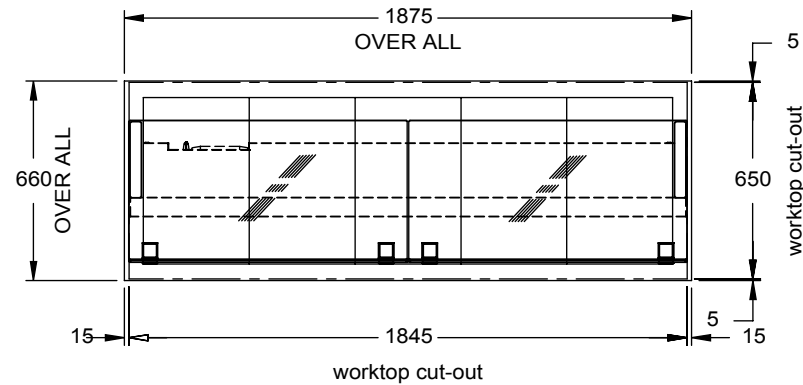
Recommended Control Box Positioning

Site the control box preferably to an upright surface, in an accessible service void, adjacent to or below the display unit (minimum clearance below underside of display unit = 200mm).

Incorrect Control Box Positioning

The control box must not be located

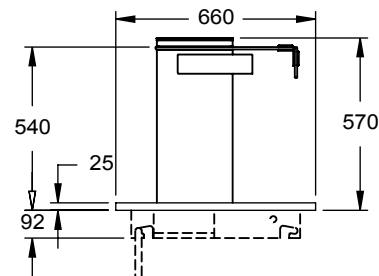
- 1) directly to the underside of the display unit,
- 2) above a hot cupboard or,
- 3) where ambient temperature is above 40°C,
- 4) where likely to allow ingress of water i.e. wet floor areas.



PLAN VIEW

Display Performance Considerations

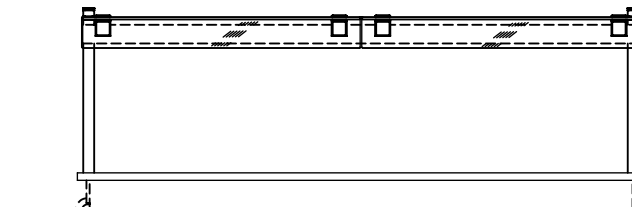
The position of the display may effect its performance: Site the display in a position away from direct draughts and also indirect draughts created by air conditioning. In known draught conditions or if in doubt, performance can be enhanced by insallation of the assisted service glass option - KAS5



END VIEW

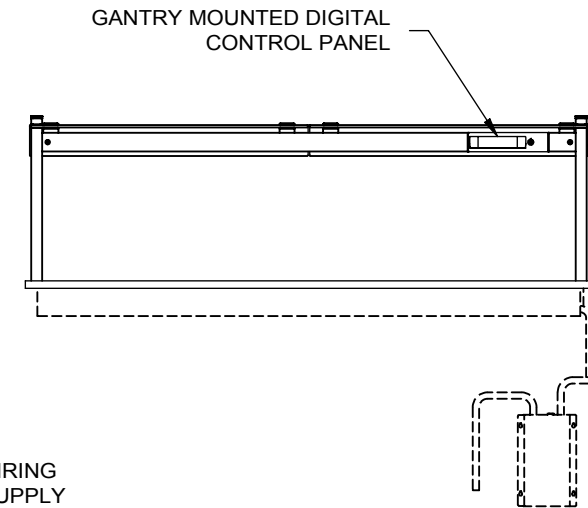
2m FLEXIBLE CONDUIT TO CONTROL BOX

CONTROL BOX
(4 x M4 FIXINGS)



FRONT VIEW
(CUSTOMER SIDE)

2m HARD WIRED FLEXIBLE CONDUIT FOR WIRING TO CUSTOMER'S OWN JUNCTION BOX OR SUPPLY
POWER SUPPLY:
16A, 230V, 3.3kW



REAR VIEW
(OPERATOR SIDE)

GANTRY MOUNTED DIGITAL CONTROL PANEL

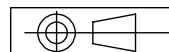
APPROX. UN-CRATED
WEIGHT OF UNIT: 78Kg



CED FABRICATIONS LTD
UNITS A1-A4, FALCON COURT
CLAYTON BUSINESS PARK
CLAYTON-LE-MOORS
HYNDBURN
LANCASHIRE BB5 5JD

This drawing and information herein is confidential to CED Fabrications Ltd.
It is issued in confidence that it will not be disclosed to any third party in part or in whole without permission from CED FABRICATIONS Ltd.

© CED FABRICATIONS LTD



DESCRIPTION:

CABINET KUBUS DROP-IN HEATED
5-1 GN HOTPLATE

SCALE: 1 : 25 @ A4

REV No: -

PRODUCT
CODE:

KHP5