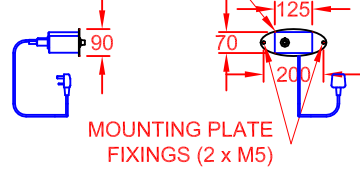
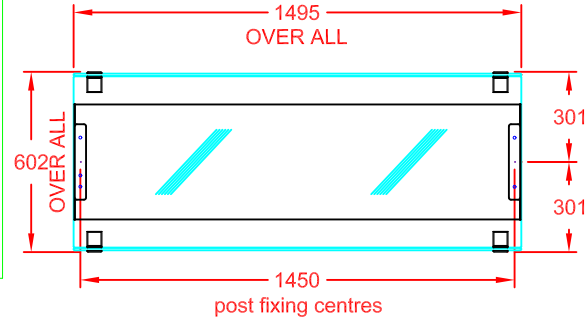
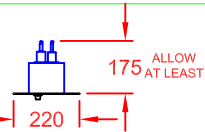


OPTIONAL QUARTZ
DIMMER (QC1) DETAILS

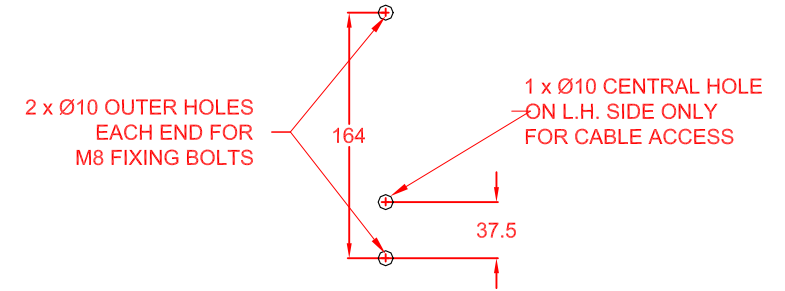
DIMMER MOUNTING
CUT-OUT (125 x 70)



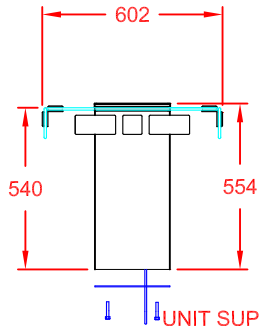
MOUNTING PLATE
FIXINGS (2 x M5)



PLAN VIEW



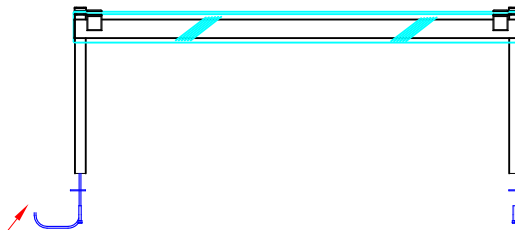
WORKTOP DRILLING
DETAIL (SCALE 1:5)



END VIEW

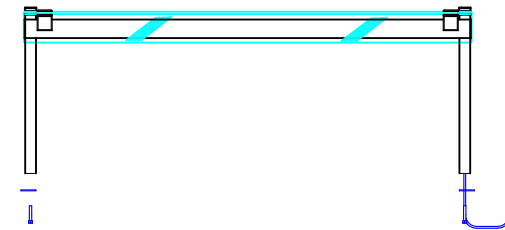
POWER SUPPLY:
13A, 230V, 1.2kW

UNIT SUPPLIED WITH 2m LEAD
FOR WIRING TO CUSTOMER'S
OWN CONTROL CIRCUIT
OR OPTIONAL DIMMER (QC1)



FRONT VIEW
(CUSTOMER SIDE)

2 x FIXING/SPREADER
PLATES (SUPPLIED)
4 x M8 FIXING BOLTS
(SUPPLIED)



REAR VIEW
(OPERATOR SIDE)

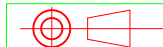
APPROX. UN-CRATED
WEIGHT OF UNIT: 27Kg



CED FABRICATIONS LTD
UNITS A1-A4, FALCON COURT
CLAYTON BUSINESS PARK
CLAYTON-LE-MOORS
HYNDBURN
LANCASHIRE BB5 5JD

This drawing and information herein is confidential to CED Fabrications Ltd. It is issued in confidence that it will not be disclosed to any third party in part or in whole without permission from CED FABRICATIONS Ltd.

© CED FABRICATIONS LTD



DESCRIPTION:

CABINET KUBUS HEATED
4 - 1 G n ISLAND GANTRY

SCALE: 1 : 2.5 @ A4 REV No: -

PRODUCT
CODE:

KHIG4