

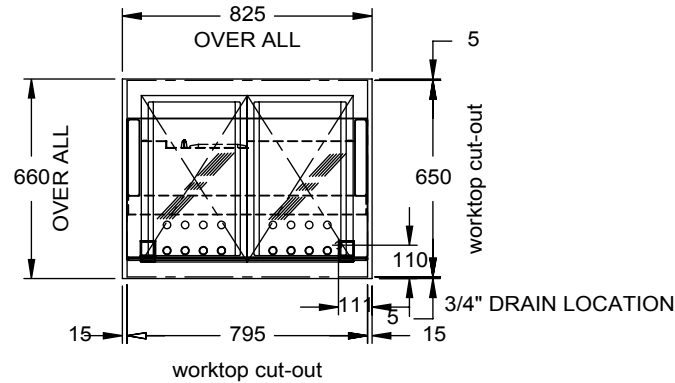
#### Recommended Control Box Positioning

Site the control box preferably to an upright surface, in an accessible service void, adjacent to or below the display unit (minimum clearance below underside of display unit = 200mm).

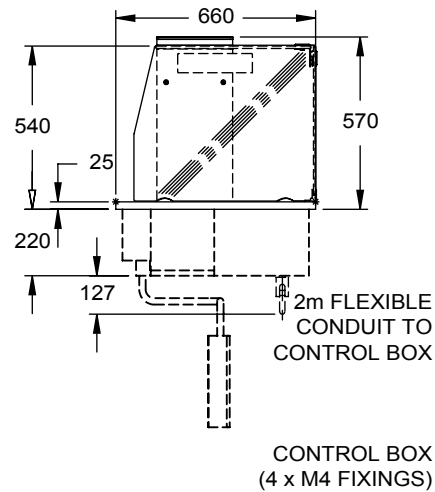
#### Incorrect Control Box Positioning

The control box must not be located

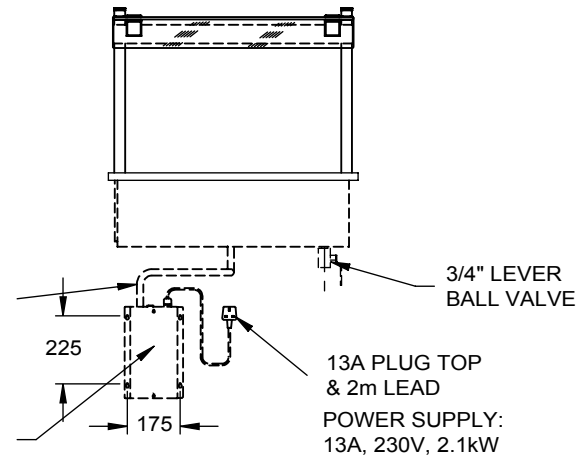
- 1) directly to the underside of the display unit,
- 2) above a hot cupboard or,
- 3) where ambient temperature is above 40°C,
- 4) where likely to allow ingress of water i.e. wet floor areas.



PLAN VIEW

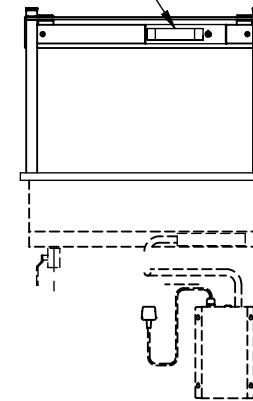


END VIEW



FRONT VIEW  
(CUSTOMER SIDE)

GANTRY MOUNTED DIGITAL  
CONTROL PANEL



REAR VIEW  
(OPERATOR SIDE)

#### Design Parameters:

On operator side of counter:-

- 1) A service door/hatch or removable panel is required to access manually operated drain.
- 2) Drain connection is via 3/4" lever ball valve.
- 3) Unit is to be manually filled to water line (above heating element covers).

On customer side of counter:-

- 4) Fascia panel must be removable beneath the display for maintenance access to heating elements.

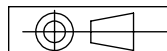
APPROX. UN-CRATED  
WEIGHT OF UNIT: 40Kg



CED FABRICATIONS LTD  
UNITS A1-A4, FALCON COURT  
CLAYTON BUSINESS PARK  
CLAYTON-LE-MOORS  
HYNDBURN  
LANCASHIRE BB5 5JD

This drawing and information herein is confidential to CED Fabrications Ltd.  
It is issued in confidence that it will not be disclosed to any third party in part or in whole without permission from CED FABRICATIONS Ltd.

© CED FABRICATIONS LTD



#### DESCRIPTION:

CABINET KUBUS DROP-IN HEATED  
2-1 Gn BAIN MARIE (WET WELL)

SCALE: 1 : 25 @ A4

REV No: -

PRODUCT  
CODE:

KHBMW2