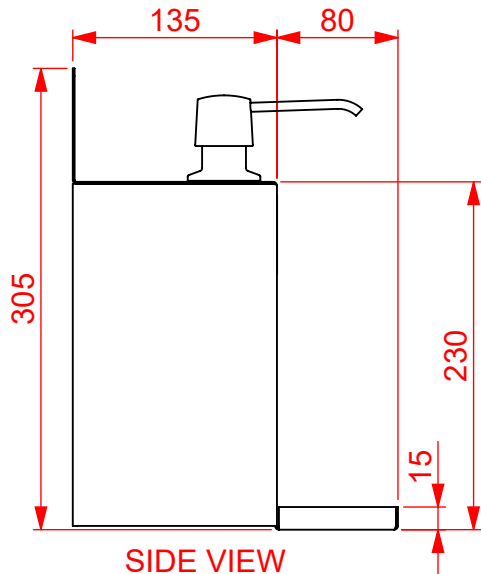
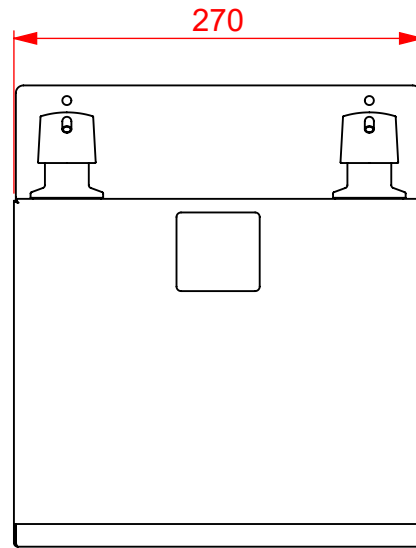


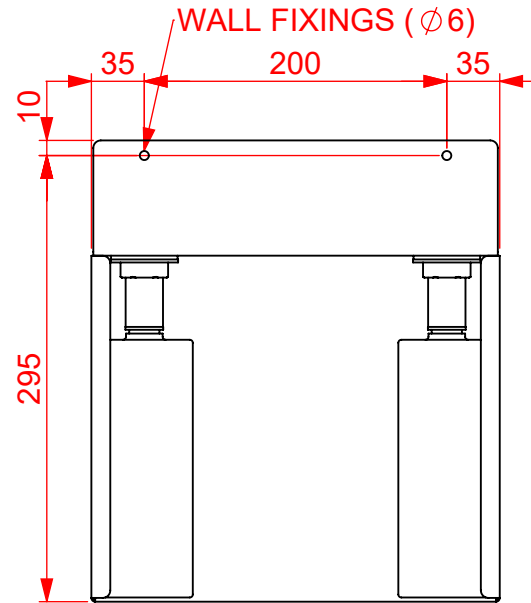
PLAN VIEW



SIDE VIEW

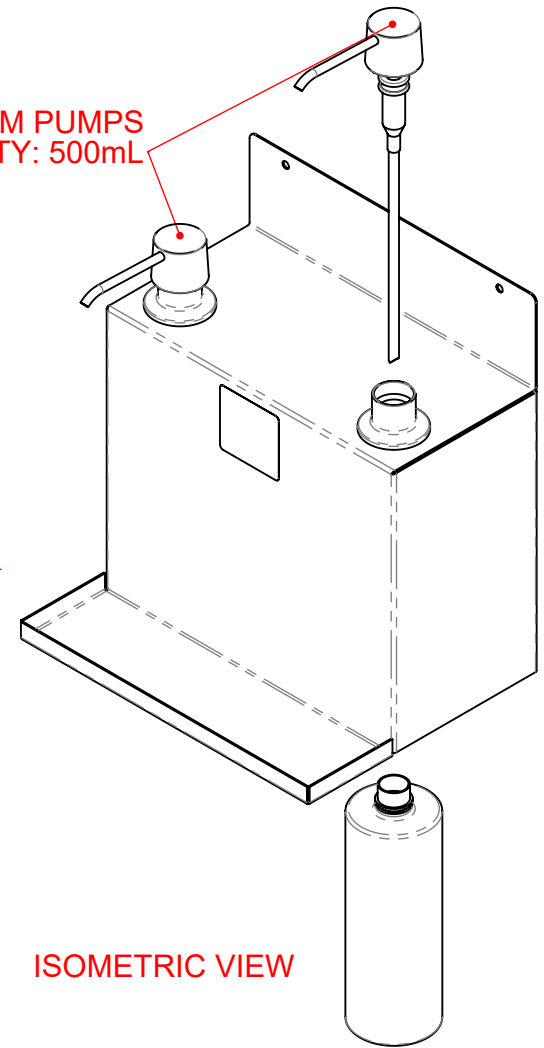


FRONT VIEW



REAR VIEW

2 x FOREARM PUMPS
CAPACITY: 500mL



ISOMETRIC VIEW

MATERIAL: 430 GRADE
STAINLESS STEEL

APPROX. WEIGHT: 3Kg

APPROVAL FOR
MANUFACTURE

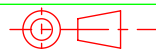
Signature..... Print.....



CED FABRICATIONS LTD
CLAYTON HOUSE
CLAYTON BUSINESS PARK
CLAYTON-LE-MOORS
HYNDBURN
LANCASHIRE BB5 5JD

This drawing and information herein is confidential to CED Fabrications Ltd.
It is issued in confidence that it will not be disclosed to any third
party in part or in whole without permission from CED FABRICATIONS Ltd.

© 2005 CED FABRICATIONS LTD



DO NOT SCALE

CUSTOMER Ref:

TITLE: MANUAL SANITISER POINT & DISPENSERS – WALL MOUNTED REV No: A

DRAWN BY: AHR CUSTOMER O/No:

DATE: 18/06/2020

SCALE: 1:5

DRG No: MSPDW

A

NEW DESIGN

18/06/2020

REV.

REVISION

DATE