

MATERIAL SPECIFICATIONS

WORKTOPS: 1.2mm 304 GRADE ST.STL.

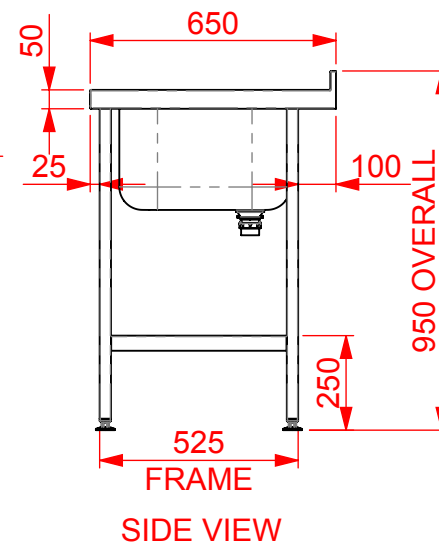
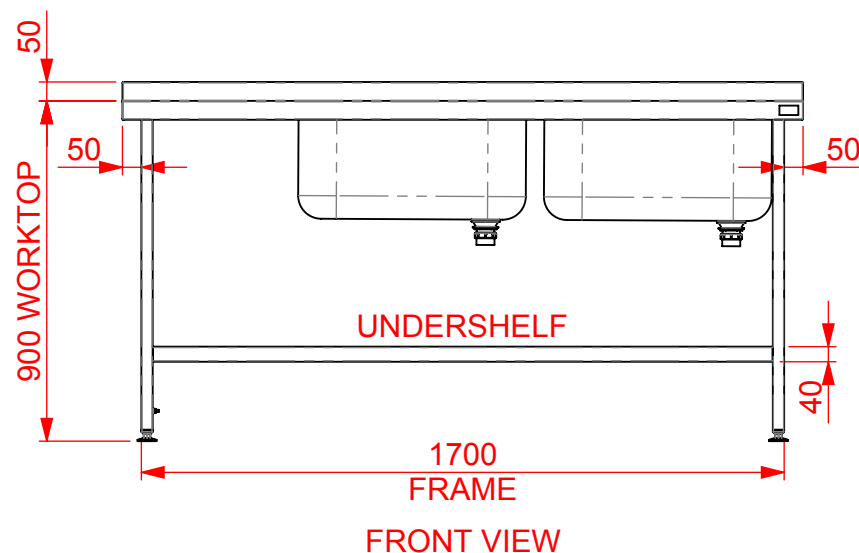
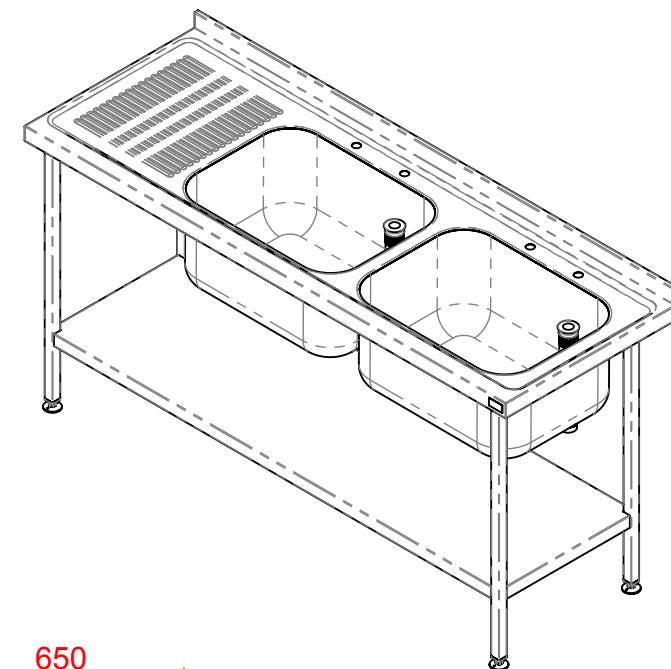
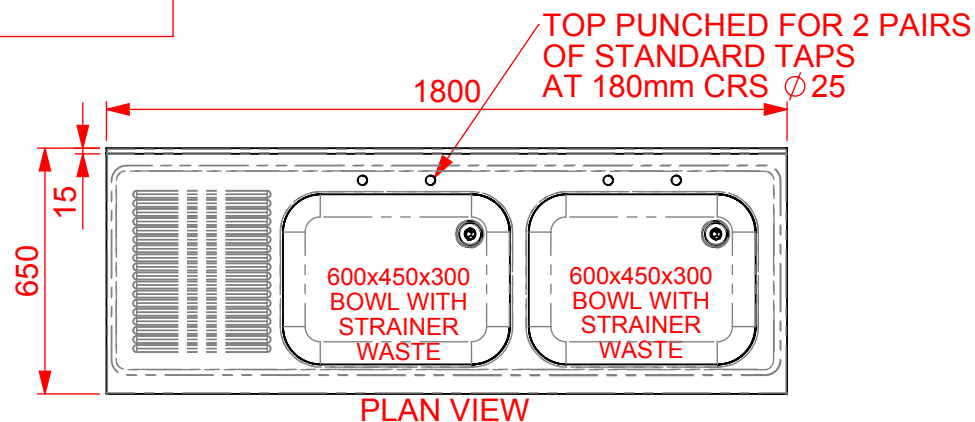
FRAMEWORK: 30 x 30 430 GRADE

ST. STL. BOX SECTION

UNDERSHELVES: 1.2mm 430 GRADE ST. STL.

FEET: ADJUSTABLE FLANGED

(CAST ALUMINIUM)



APPROVAL FOR
MANUFACTURE

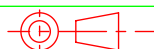
Signature..... Print.....



CED FABRICATIONS LTD
CLAYTON HOUSE
CLAYTON BUSINESS PARK
CLAYTON-LE-MOORS
HYNDBURN
LANCASHIRE BB5 5JD

This drawing and information herein is confidential to CED Fabrications Ltd.
It is issued in confidence that it will not be disclosed to any third party in part or in whole without permission from CED Fabrications Ltd.

© 2005 CED FABRICATIONS LTD



DO NOT SCALE

CUSTOMER Ref:

A

NEW DESIGN

28/01/2019

REV.

REVISION

DATE

TITLE: DB.SINK LH DRAIN 900(H)x1800(L)x650(D) (600&600 BOWL)

REV No: A

DRAWN BY: AHR

CUSTOMER O/No:

DRG No: QDS1865LUU

DATE: 28/01/2019

SCALE: 1: 20