

MATERIAL SPECIFICATIONS

WORKTOPS: 1.2mm 304 GRADE ST.STL.

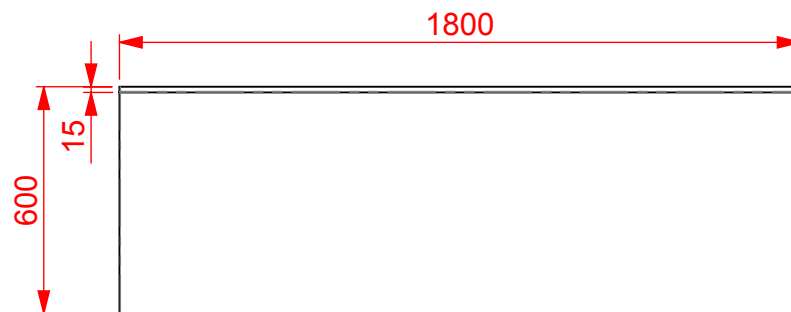
FRAMEWORK: 30 x 30 430 GRADE

ST. STL. BOX SECTION

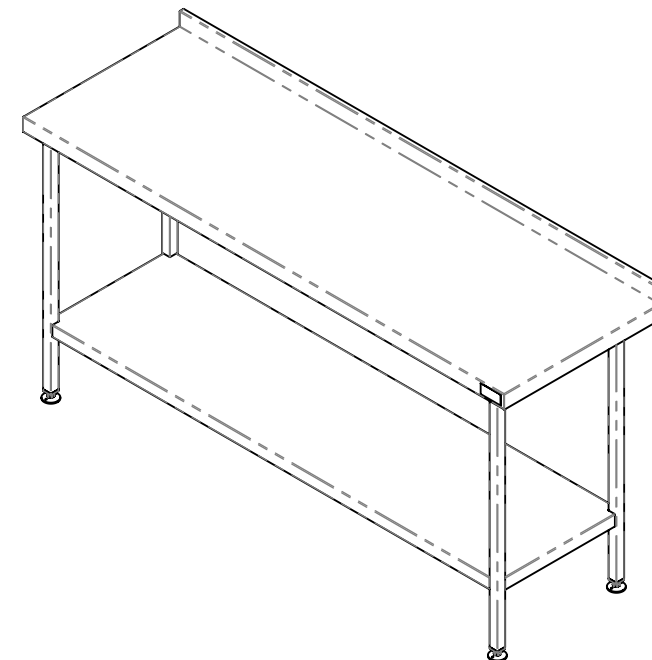
UNDERSHELVES: 1.2mm 430 GRADE ST. STL.

FEET: ADJUSTABLE FLANGED

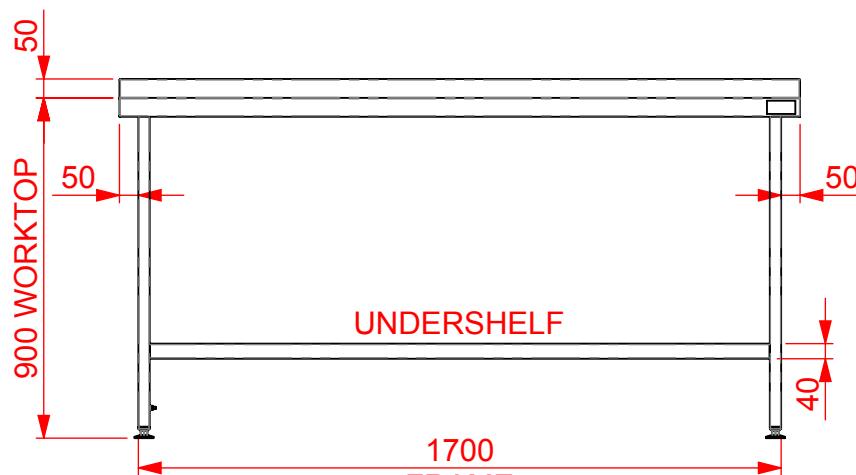
(CAST ALUMINIUM)



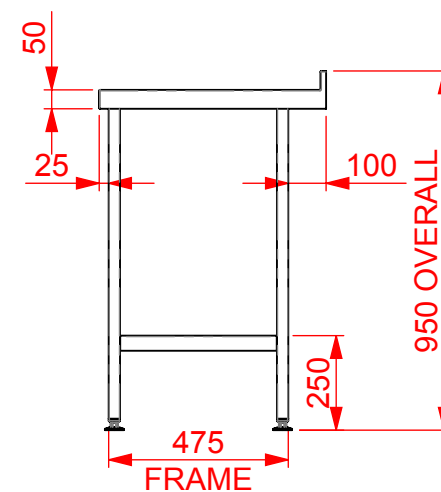
PLAN VIEW



ISOMETRIC VIEW



FRONT VIEW



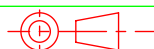
SIDE VIEW

APPROVAL FOR
MANUFACTURE

Signature..... Print.....

CED FABRICATIONS LTD
CLAYTON HOUSE
CLAYTON BUSINESS PARK
CLAYTON-LE-MOORS
HYNDBURN
LANCASHIRE BB5 5JDThis drawing and information herein is confidential to CED Fabrications Ltd.
It is issued in confidence that it will not be disclosed to any third
party in part or in whole without permission from CED FABRICATIONS Ltd.

© 2005 CED FABRICATIONS LTD



DO NOT SCALE

A

NEW DESIGN

07/12/2018

CUSTOMER Ref:

REV.

REVISION

DATE

TITLE: WALL BENCH 900(H)x1800(L)x600(D)-1.SHELF

REV No: A

DRAWN BY: AHR

CUSTOMER O/No:

DRG No: QWB1861U

DATE: 11/12/2018

SCALE: 1: 20