

# **MATERIAL SPECIFICATIONS**

WORKTOPS: 1.2mm 304 GRADE ST.STL.

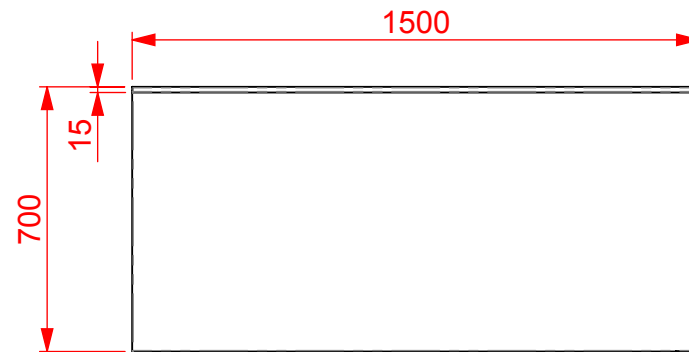
FRAMEWORK: 30 x 30 430 GRADE

ST. STL. BOX SECTION

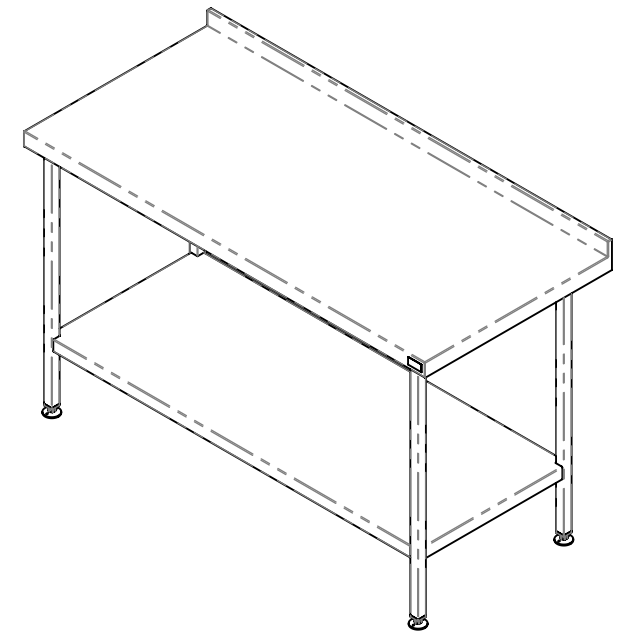
UNDERSHELVES: 1.2mm 430 GRADE ST. STL.

FEET: ADJUSTABLE FLANGED

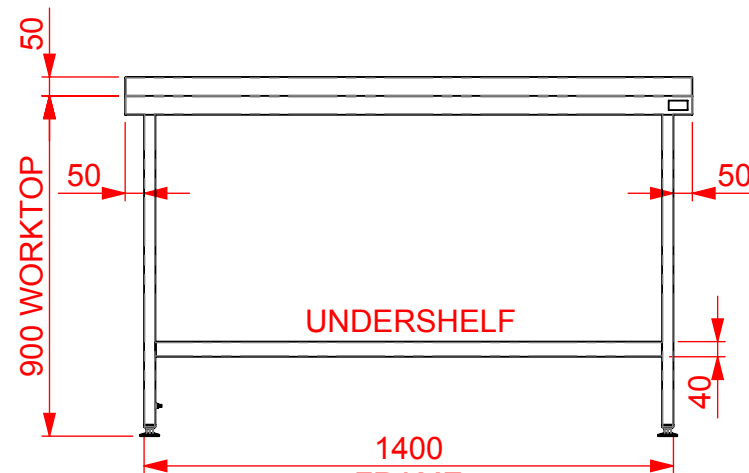
(CAST ALUMINIUM)



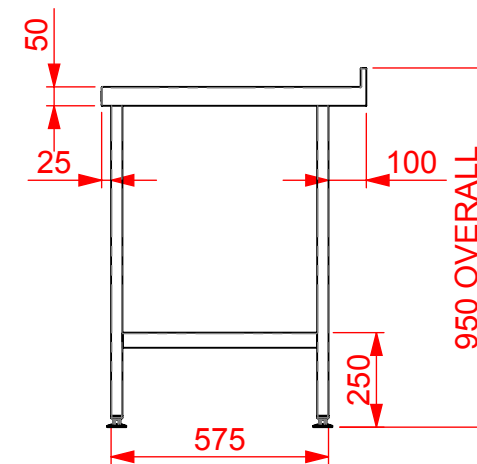
PLAN VIEW



ISOMETRIC VIEW



FRONT VIEW



SIDE VIEW

APPROVAL FOR  
MANUFACTURE

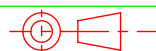
Signature..... Print.....



CED FABRICATIONS LTD  
CLAYTON HOUSE  
CLAYTON BUSINESS PARK  
CLAYTON-LE-MOORS  
HYNDBURN  
LANCASHIRE BB5 5JD

This drawing and information herein is confidential to CED Fabrications Ltd.  
It is issued in confidence that it will not be disclosed to any third party in part or in whole without permission from CED FABRICATIONS Ltd.

© 2005 CED FABRICATIONS LTD



DO NOT SCALE

CUSTOMER Ref:

A

NEW DESIGN

28/01/2019

REV.

REVISION

DATE

TITLE: WALL BENCH 900(H)x1500(L)x700(D)-1.SHELF

REV No: A

DRAWN BY: AHR

CUSTOMER O/No:

DRG No: QWB1571U

DATE: 28/01/2019

SCALE: 1: 20