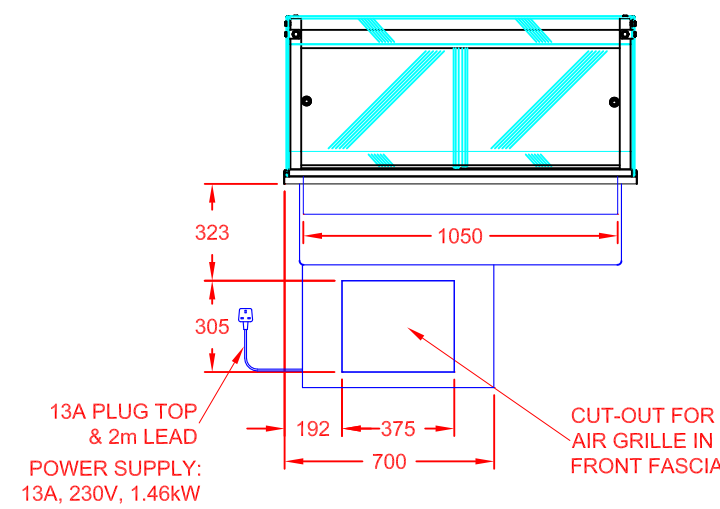
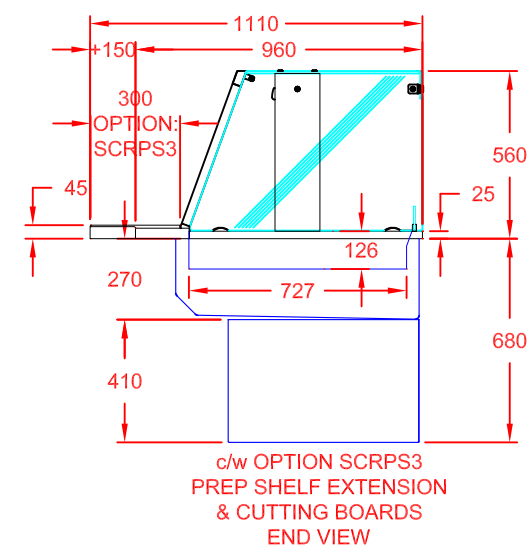
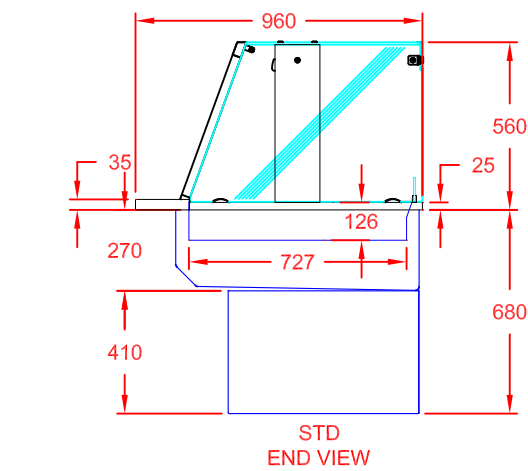
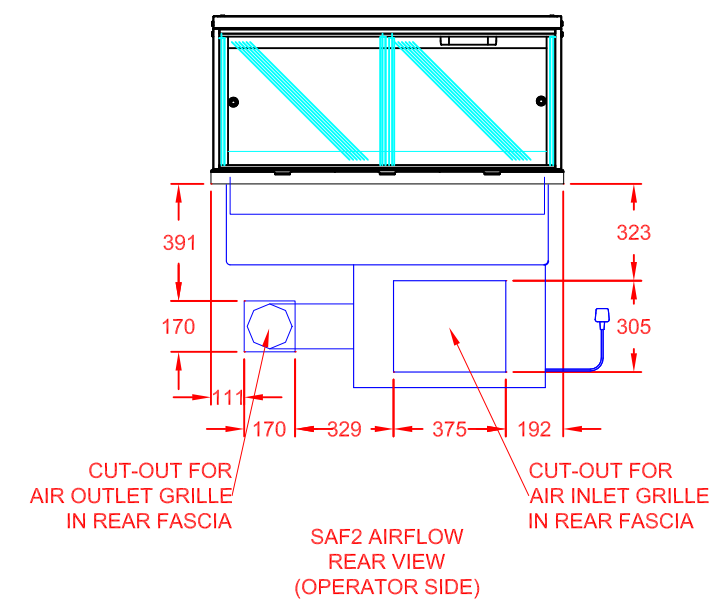
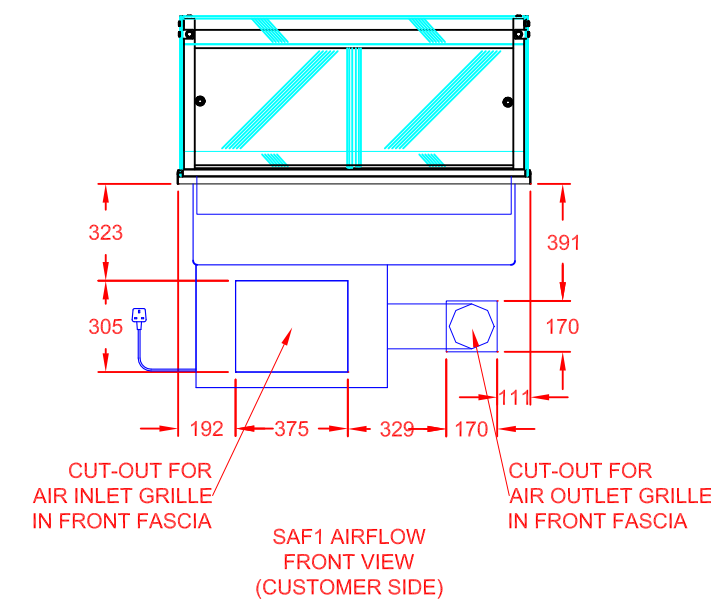
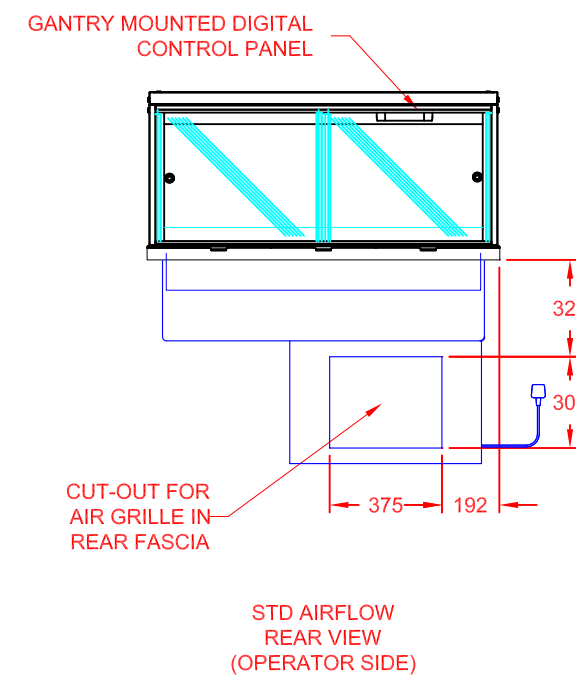
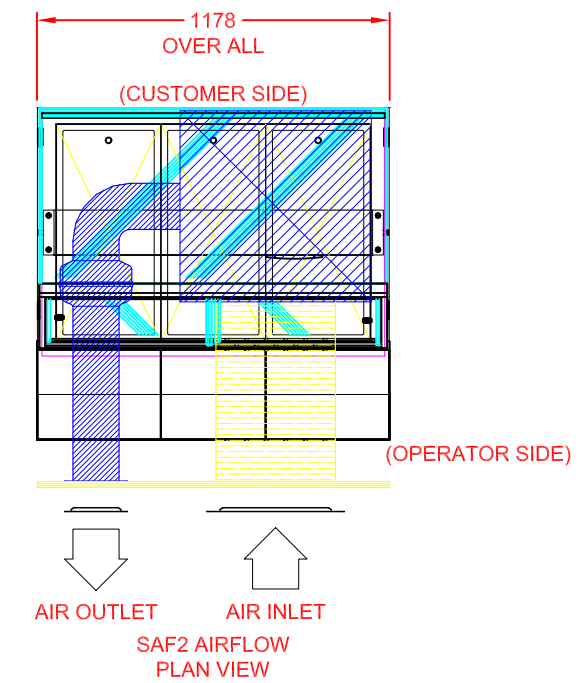
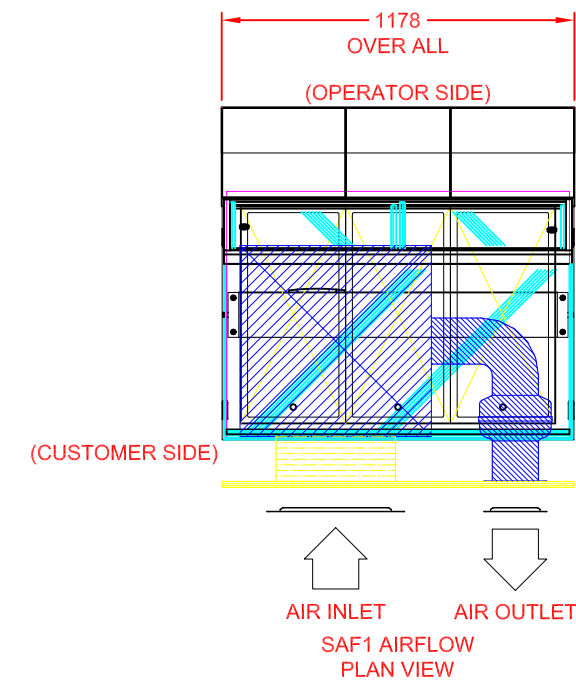
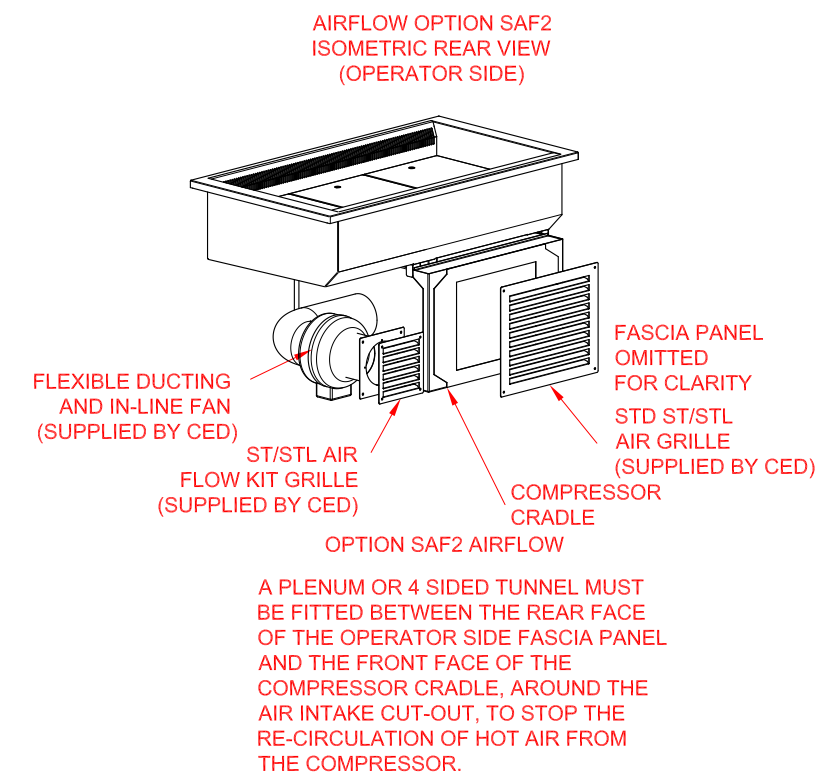
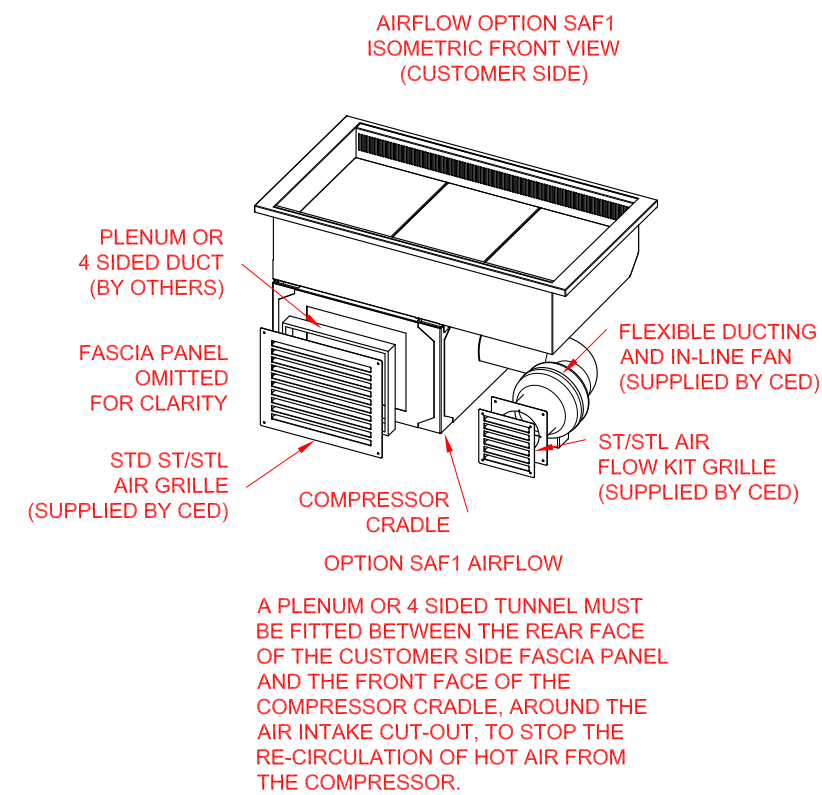
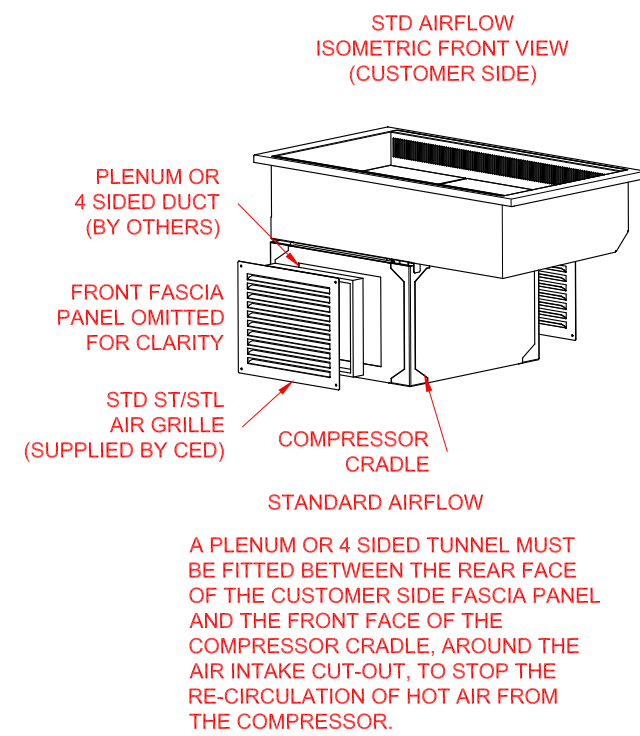
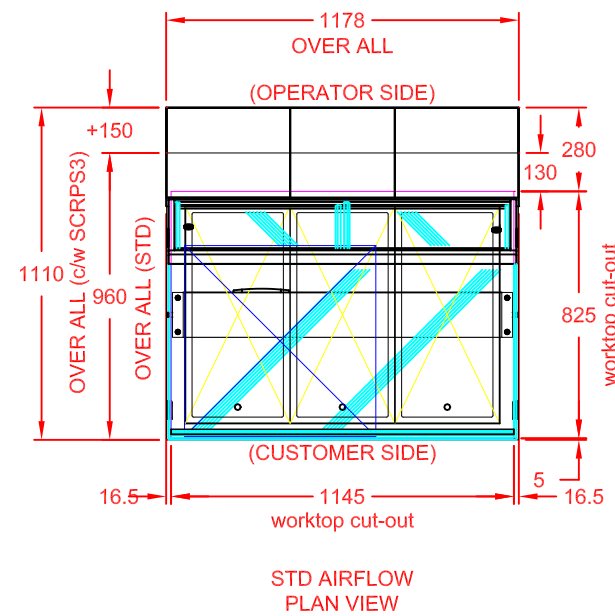
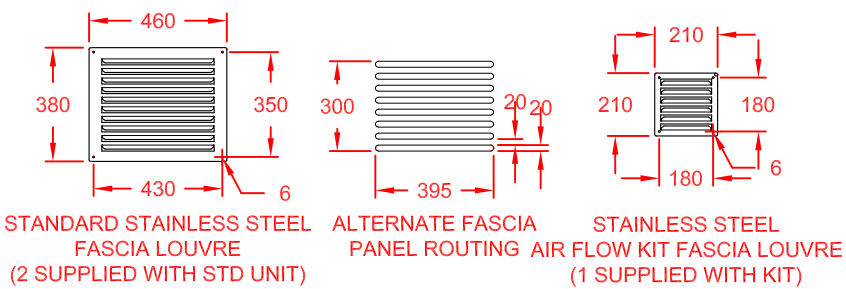


Ventilation / Display Performance Considerations

- 1) Area in which display is to be sited must have a minimum room floor area no less than 17 sq m.
- 2) Install over a sealed floor or ventilated floor void.
- 3) Do not site the display within 2m of ceiling mounted air conditioning grilles.
- 4) Do not site the display beneath a high level of direct sunlight.
- 5) Display will operate in a 24 hour environment.
- 6) Access to maintain condensing unit should be made via removable fascia panels or doors to customer and operator side of counter.



DESCRIPTION: SCENIC DROP-IN CHILLED 3-1 Gd DEEP DELI (SELF HELP) HYDROCARBON TYPE-R290 REFRIGERANT	SCALE: 1:25@A2	REV No: -
	PRODUCT CODE: SCDDL3HT	