



PRICE LIST 2022

BAIN MARIE · CERAN · CHILLED WELL · MULTIDECK · PLUS MANY MORE

Glide Dining Carts

The Glide Dining Carts range of modular heated, ambient and refrigerated systems creates a versatile, mobile servery counter system. Manufactured in stainless steel, the units feature plastisol front and panels that are aesthetically pleasing yet durable.

The wide array of features means that the carts can be customized to meet the individual needs of your business or institution. The carts can be either free standing / wall sited and combined together to form a fully functional angled or straight servery area. A variety of sizes, gantry options, and wall-sited alternatives ensure that no space is wasted.



Contents

CONTROL PANELS / GANTRY PROFILES	3
BAIN MARIE HOT CUPBOARD (DRY HEAT)	4
BAIN MARIE HOT CUPBOARD (DRY HEAT) (WALL SITED)	5
BAIN MARIE HOT CUPBOARD (WET & DRY HEAT)	6
BAIN MARIE HOT CUPBOARD (WET & DRY HEAT) (WALL SITED)	7
CERAN TOP HOT CUPBOARD	8
CERAN TOP HOT CUPBOARD (WALL SITED)	9
HOT CUPBOARD PLAIN TOP	10
HOT CUPBOARD PLAIN TOP (WALL SITED)	11
SOUP STATION (REVERSIBLE TOP)	12
HEATED TWIN PLATE DISPENSER	13
EUTECTIC COLD WELL	14
EUTECTIC COLD WELL (WALL SITED)	15
REFRIGERATED COLD WELL	16
REFRIGERATED COLD WELL CONTINUED	17
REFRIGERATED COLD MULTIDECK	18
REFRIGERATED COLD MULTIDECK (SECURITY SHUTTER)	19
AMBIENT MULTIDECK	20
AMBIENT MULTIDECK (SECURITY SHUTTER)	21
AMBIENT TWIN PLATE DISPENSER	22
CASHIER SECTIONS	23
CUTLERY & TRAY PICK UP UNIT	24
SANTISING DISPENSER STATION	25
AMBIENT CUPBOARD PLAIN TOP	26
AMBIENT CUPBOARD PLAIN TOP (WALL SITED)	27
45° & 90° CORNER INFILL UNITS	28
LOW HEIGHT TRAY PICK UP	29
WASTE CLEARING TROLLEY	29
VISUAL EXAMPLE	30
VISUAL EXAMPLE CONTINUED	31

Control Panels



AMBIENT UNITS CONTROLLER



CERAN TOP HOT CUPBOARD CONTROLLER



COLD UNITS CONTROLLER



CERAN TOP HOT CUPBOARD + GANTRY CONTROLLER



AMBIENT GANTRY UNITS CONTROLLER



WET / DRY BAIN MARIE HOT CUPBOARD CONTROLLER



DRY BAIN MARIE + HOT CUPBOARD CONTROLLER



WET / DRY BAIN MARIE HOT CUPBOARD + GANTRY CONTROLLER



DRY BAIN MARIE + HOT CUPBOARD + GANTRY CONTROLLER

Gantry Range



HOT + COLD STANDARD GANTRY - SELF HELP POSITION



COLD DELI GANTY - ASSISTED SERVICE ONLY

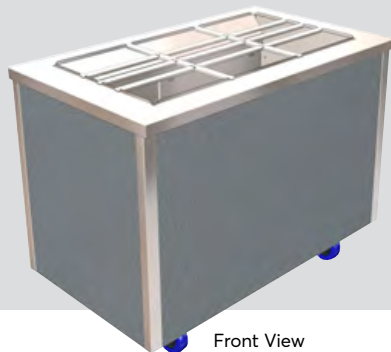


HOT + COLD STANDARD GANTRY - ASSISTED SERVICE POSITION



HOT + COLD ISLAND GANTRY - SELF HELP SERVICE ONLY

Bain Marie Hot Cupboard (Dry Heat)



Front View



Rear View

BASE MODEL

The bain marie hot cupboard (no gantry) features a bain marie section with removable container supports, formed in the worktop to accept up to 150mm deep GN containers (not included). Heated by suspended elements & residual heat from the hot cupboard. The hot cupboard uses fan blown heating to evenly distribute heat around the cupboard. Behind lift-off rear sliding s/steel cupboard doors, are two tiers of removable, height adjustable grid shelves for plate/container storage.

All models supplied with 3m lead & 13amp UK plug 13A | 230V | 50Hz

Model	Weight (kg)	Dimensions (LxDxH mm)	GN Capacity (1/1)	Total Power (No Gantry)(kW)	Total Power (+ Hot Gantry)(kW)	List Price
GHBM2	45	825 x 700 x 900	2	2.58	2.08	£1,753
GHBM3	67	1175 x 700 x 900	3	2.83	2.53	£2,006
GHBM4	90	1525 x 700 x 900	4	2.83	2.73	£2,244
GHBM5	112	1875 x 700 x 900	5	2.83	2.93	£2,471

*All option prices are to be added onto base unit prices for total unit price

Gantry Options



Hot gantries s/steel, reversible curved glass sneeze screen, end glass, self help/ ass. serve use, + 397(h) above worktop, end glass, fitted with 200w quartz infra-red jacketed safety lamps.

HEATED GANTRY

Option	Weight (kg)	Dimensions (LxDxH mm)	GN Capacity (1/1)	Power (kW)	List Price
GHG2	7	825 x 700 x 397	2	0.4	£724
GHG3	9	1175 x 700 x 397	3	0.6	£829
GHG4	12	1525 x 700 x 397	4	0.8	£943
GHG5	16	1875 x 700 x 397	5	1.0	£1,062



Hot island gantry, s/steel, double curved glass sneeze screen, end glass, self help, + 397(h) above worktop, end glass, fitted with 200w quartz infra-red jacketed safety lamps.

HEATED ISLAND GANTRY

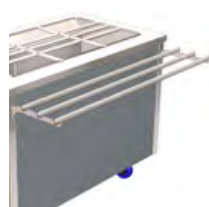
Option	Weight (kg)	Dimensions (LxDxH mm)	GN Capacity (1/1)	Power (kW)	List Price
GHIG2	9	825 x 700 x 397	2	0.4	£823
GHIG3	11	1175 x 700 x 397	3	0.6	£1,076
GHIG4	13	1525 x 700 x 397	4	0.8	£1,268
GHIG5	18	1875 x 700 x 397	5	1.0	£1,414

Trayslide Options



SOLID DROP DOWN

Option	Dimensions (LxD mm)	List Price
GSTS2	825 x 302	£147
GSTS3	1175 x 302	£165
GSTS4	1525 x 302	£179
GSTS5	1875 x 302	£193



TUBULAR DROP DOWN

Option	Dimensions (LxD mm)	List Price
GTTS2	825 x 298	£188
GTTS3	1175 x 298	£239
GTTS4	1525 x 298	£272
GTTS5	1875 x 298	£318

Height Options

Base units as standard are 900mm high

JUNIOR HEIGHTS	Option	Dimensions (H mm)	List Price
	G850H	850	£0
	G800H	800	£0

*Extended lead times

Insert Options



CARVING GCINS1



GLASS GHINS1



SOUP GSUPI4

Option	Dimensions (LxDxH mm)	List Price
GCINS1	325 x 530 x 24	£199
GHINS1	324 x 520 x 27	£199
GSUPI4	325 x 520 x 64	£199

Colour Options

*All units as standard come in Merlin Grey.

*Use code below with either 2,3,4 or 5 on the end depending on the size of the unit chosen.



Merlin Grey Black Light Grey White Buttermilk Blue Red Green Satin Steel Oak Beech Walnut

NO CODE AS IS STANDARD GBLAKCHA2-5 GGREYCHA2-5 GWHITCHA2-5 GCREMCHA2-5 GBLUECHA2-5 GPREDCHA2-5 GGRENCHA2-5 GSSTLCHA2-5 GOAKCHA2-5 GBEECCHA2-5 GWALNCHA2-5

£0 £0 £0 £0 £0 £0 £0 £0 £0 £128 £128 £128

Bain Marie Hot Cupboard (Dry Heat) (Wall Sited)



Front View

The wall sited bain marie hot cupboard fits neatly against walls, in alcoves, recesses, or back to back with island units. The bain marie hot cupboard (no gantry) features a bain marie section with removable container supports, formed in the worktop to accept up to 150mm deep GN containers (not included). Heated by suspended elements & residual heat from the hot cupboard. The hot cupboard uses fan blown heating to evenly distribute heat around the cupboard. Behind lift-off sliding s/steel cupboard doors, are two tiers of removable, height adjustable grid shelves for plate/container storage.



DOWNLOAD ALL
TECHNICAL DRAWINGS
from www.cedfabsltd.co.uk



Rear View

BASE MODEL

Model	Weight (kg)	Dimensions (LxDxH mm)	GN Capacity (1/1)	Total Power (No Gantry)(kW)	Total Power (+ Hot Gantry)(kW)	List Price
GWSHBM2	45	825 x 700 x 900	2	2.58	2.08	£1,753
GWSHBM3	67	1175 x 700 x 900	3	2.83	2.53	£2,006
GWSHBM4	90	1525 x 700 x 900	4	2.83	2.73	£2,244
GWSHBM5	112	1875 x 700 x 900	5	2.83	2.93	£2,471

All models supplied with 3m lead & 13amp UK plug 13A | 230V | 50Hz

*All option prices are to be added onto base unit prices for total unit price

Gantry Options



Wall sited hot gantries, s/steel, curved glass, sneeze screen, end glass, self help use only, + 397(h) above worktop, fitted with 200W quartz infra-red jacketed safety lamps.

HEATED GANTRY

Option	Weight (kg)	Dimensions (LxDxH mm)	GN Capacity (1/1)	Power (kW)	List Price
GWSHG2	7	825 x 700 x 397	2	0.4	£724
GWSHG3	9	1175 x 700 x 397	3	0.6	£829
GWSHG4	12	1525 x 700 x 397	4	0.8	£943
GWSHG5	16	1875 x 700 x 397	5	1.0	£1,062



Trayslide Options



SOLID
DROP DOWN

Option	Dimensions (LxD mm)	List Price
GSTS2	825 x 302	£147
GSTS3	1175 x 302	£165
GSTS4	1525 x 302	£179
GSTS5	1875 x 302	£193



TUBULAR
DROP DOWN

Option	Dimensions (LxD mm)	List Price
GTTS2	825 x 298	£188
GTTS3	1175 x 298	£239
GTTS4	1525 x 298	£272
GTTS5	1875 x 298	£318

Height Options

Base units as standard are 900mm high

Option	Dimensions (H mm)	List Price
G850H	850	£0
G800H	800	£0

*Extended lead times

Insert Options



CARVING
GCINS1



GLASS
GHINS1



SOUP
GSUPI4

Option	Dimensions (LxDxH mm)	List Price
GCINS1	325 x 530 x 24	£199
GHINS1	324 x 520 x 27	£199
GSUPI4	325 x 520 x 64	£199

Colour Options

*All units as standard come in Merlin Grey.

*Use code below with either 2,3,4 or 5 on the end depending on the size of the unit chosen.



Merlin Grey



Black



Light Grey



White



Buttermilk



Blue



Red



Green



Satin Steel



Oak



Beech

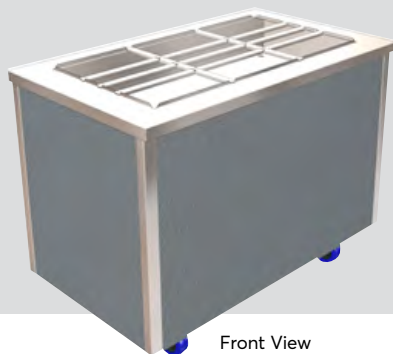


Walnut

NO CODE AS IS STANDARD	GBLAKCHA2-5	GGREYCHA2-5	GWHITCHA2-5	GCREMCHA2-5	GBLUECHA2-5	GPREDCHA2-5	GGRENCHA2-5	GSSTLCHA2-5	GOAKCHA2-5	GBEECCHA2-5	GWALNCHA2-5
------------------------------	-------------	-------------	-------------	-------------	-------------	-------------	-------------	-------------	------------	-------------	-------------

£0	£0	£0	£0	£0	£0	£0	£0	£0	£128	£128	£128
----	----	----	----	----	----	----	----	----	------	------	------

Bain Marie Hot Cupboard (Wet & Dry Heat)



Front View

The wet & dry bain marie hot cupboard (no gantry) features a bain marie section with removable container supports, formed in the worktop to accept up to 150mm deep GN containers (not included). The GN pans can be heated by either dry heat or by water from a filled tank with suspended heat elements underneath. A water level fill indicator & manual swivel drain are included. The hot cupboard underneath uses fan blown heated to evenly distribute heat around the cupboard. Behind lift-off rear sliding s/steel cupboard doors are two tiers or removable, height adjustable grid shelves for plate/container storage.



Rear View

All models supplied with 3m lead & 13amp UK plug 13A | 230V | 50Hz . Models with hot gantry option above 3kW are fitted with either 16A or 32A commando plug.

BASE MODEL

Model	Weight (kg)	Dimensions (LxDxH mm)	GN Capacity (1/1)	Total Power (No Gantry)(kW)	Total Power (+ Hot Gantry)(kW)	List Price
GHBMW2	49	825 x 700 x 900	2	2.43	2.83 (13A)	£2,065
GHBMW3	69	1175 x 700 x 900	3	2.93	3.53 (16A)	£2,318
GHBMW4	92	1525 x 700 x 900	4	2.93	3.73 (32A)	£2,556
GHBMW5	114	1875 x 700 x 900	5	2.93	3.93 (32A)	£2,783

*All option prices are to be added onto base unit prices for total unit price

Gantry Options



Hot gantries s/steel, reversible curved glass sneeze screen, end glass, self help/ ass. serve use, + 397(h) above worktop, end glass, fitted with 200w quartz infra-red jacketed safety lamps.

HEATED GANTRY

Option	Weight (kg)	Dimensions (LxDxH mm)	GN Capacity (1/1)	Power (kW)	List Price
GHG2	7	825 x 700 x 397	2	0.4	£724
GHG3	9	1175 x 700 x 397	3	0.6	£829
GHG4	12	1525 x 700 x 397	4	0.8	£943
GHG5	16	1875 x 700 x 397	5	1.0	£1,062



Hot island gantry, s/steel, double curved glass sneeze screen, end glass, self help, + 397(h) above worktop, end glass, fitted with 200w quartz infra-red jacketed safety lamps.

HEATED ISLAND GANTRY

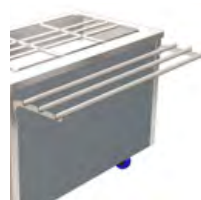
Option	Weight (kg)	Dimensions (LxDxH mm)	GN Capacity (1/1)	Power (kW)	List Price
GHIG2	9	825 x 700 x 397	2	0.4	£823
GHIG3	11	1175 x 700 x 397	3	0.6	£1,076
GHIG4	13	1525 x 700 x 397	4	0.8	£1,268
GHIG5	18	1875 x 700 x 397	5	1.0	£1,414

Trayslide Options



SOLID DROP DOWN

Option	Dimensions (LxD mm)	List Price
GSTS2	825 x 302	£147
GSTS3	1175 x 302	£165
GSTS4	1525 x 302	£179
GSTS5	1875 x 302	£193



TUBULAR DROP DOWN

Option	Dimensions (LxD mm)	List Price
GTTS2	825 x 298	£188
GTTS3	1175 x 298	£239
GTTS4	1525 x 298	£272
GTTS5	1875 x 298	£318

Height Options

Base units as standard are 900mm high

JUNIOR HEIGHTS	Option	Dimensions (H mm)	List Price
	G850H	850	£0
	G800H	800	£0

*Extended lead times

Insert Options



CARVING GCINS1



GLASS HINS1



SOUP GSUP14

Option	Dimensions (LxDxH mm)	List Price
GCINS1	325 x 530 x 24	£199
GHINS1	324 x 520 x 27	£199
GSUP14	325 x 520 x 64	£199

Colour Options

*All units as standard come in Merlin Grey.

*Use code below with either 2,3,4 or 5 on the end depending on the size of the unit chosen.



Merlin Grey



Black



Light Grey



White



Buttermilk



Blue



Red



Green



Satin Steel



Oak



Beech

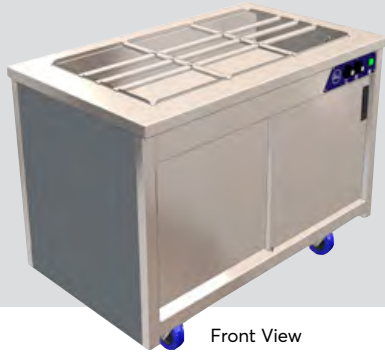


Walnut

NO CODE AS IS STANDARD	GBLAKCHA2-5	GGREYCHA2-5	GWHITCHA2-5	GCREMCHA2-5	GBLUECHA2-5	GPREDCHA2-5	GGRENCHA2-5	GSSTLCHA2-5	GOAKCHA2-5	GBEECCHA2-5	GWALNCHA2-5
------------------------	-------------	-------------	-------------	-------------	-------------	-------------	-------------	-------------	------------	-------------	-------------

£0	£0	£0	£0	£0	£0	£0	£0	£0	£0	£128	£128	£128
----	----	----	----	----	----	----	----	----	----	------	------	------

Bain Marie Hot Cupboard (Wet & Dry Heat) (Wall Sited)



Front View



Rear View

The wall sited wet & dry bain marie hot cupboard fits neatly against walls, in alcoves, recesses, or back to back with island units. The wet & dry bain marie hot cupboard (no gantry) features a bain marie section with removable container supports, formed in the worktop to accept up to 150mm deep GN containers (not included). The GN pans can be heated by either dry heat or by water from a filled tank with suspended heat elements underneath. A water level fill indicator & manual swivel drain are included. The hot cupboard underneath uses fan blown heated to evenly distribute heat around the cupboard. Behind lift-off rear sliding s/steel cupboard doors are two tiers or removable, height adjustable grid shelves for plate/container storage.



DOWNLOAD ALL
TECHNICAL DRAWINGS
from www.cedfabsltd.co.uk

All models supplied with 3m lead & 13amp UK plug 13A | 230V | 50Hz

BASE MODEL

Model	Weight (kg)	Dimensions (LxDxH mm)	GN Capacity (1/1)	Total Power (No Gantry)(kW)	Total Power (+ Hot Gantry)(kW)	List Price
GWSHBMW2	45	825 x 700 x 900	2	2.43	2.83 (13A)	£2,065
GWSHBMW3	67	1175 x 700 x 900	3	2.93	3.53 (16A)	£2,318
GWSHBMW4	90	1525 x 700 x 900	4	2.93	3.73 (32A)	£2,556
GWSHBMW5	112	1875 x 700 x 900	5	2.93	3.93 (32A)	£2,783

*All option prices are to be added onto base unit prices for total unit price

Gantry Options



Wall sited hot gantries, s/steel, curved glass, sneeze screen, end glass, self help use only, + 397(h) above worktop, fitted with 200W quartz infra-red jacketed safety lamps.

HEATED GANTRY

Option	Weight (kg)	Dimensions (LxDxH mm)	GN Capacity (1/1)	Power (kW)	List Price
GWSHG2	7	825 x 700 x 397	2	0.4	£724
GWSHG3	9	1175 x 700 x 397	3	0.6	£829
GWSHG4	12	1525 x 700 x 397	4	0.8	£943
GWSHG5	16	1875 x 700 x 397	5	1.0	£1,062



Trayslide Options



SOLID DROP DOWN

Option	Dimensions (LxD mm)	List Price
GSTS2	825 x 302	£147
GSTS3	1175 x 302	£165
GSTS4	1525 x 302	£179
GSTS5	1875 x 302	£193



TUBULAR DROP DOWN

Option	Dimensions (LxD mm)	List Price
GTTS2	825 x 298	£188
GTTS3	1175 x 298	£239
GTTS4	1525 x 298	£272
GTTS5	1875 x 298	£318

Height Options

Base units as standard are 900mm high.

JUNIOR HEIGHTS	Option	Dimensions (H mm)	List Price
	G850H	850	£0
	G800H	800	£0

*Extended lead times

Insert Options



CARVING
GCINS1



GLASS
HINS1



SOUP
GSUPI4

Option	Dimensions (LxDxH mm)	List Price
GCINS1	325 x 530 x 24	£199
GHINS1	324 x 520 x 27	£199
GSUPI4	325 x 520 x 64	£199

Colour Options

*All units as standard come in Merlin Grey.

*Use code below with either 2,3,4 or 5 on the end depending on the size of the unit chosen.



Merlin Grey



Black



Light Grey



White



Buttermilk



Blue



Red



Green



Satin Steel



Oak



Beech

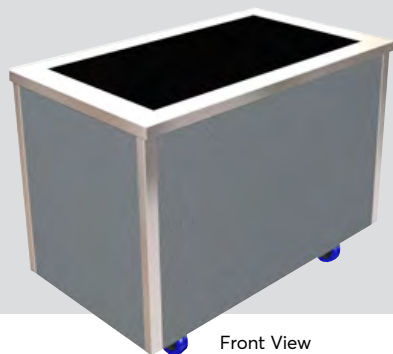


Walnut

NO CODE AS IS STANDARD	GBLAKCHA2-5	GGREYCHA2-5	GWHITCHA2-5	GCREMCHA2-5	GBLUECHA2-5	GPREDCHA2-5	GGRENCHA2-5	GSSTLCHA2-5	GOAKCHA2-5	GBEECCHA2-5	GWALNCHA2-5
------------------------	-------------	-------------	-------------	-------------	-------------	-------------	-------------	-------------	------------	-------------	-------------

£0	£0	£0	£0	£0	£0	£0	£0	£0	£128	£128	£128
----	----	----	----	----	----	----	----	----	------	------	------

Ceran Top Hot Cupboard



Front View

The ceran top hot cupboard (no gantry) features a heated ceramic glass hotplate section formed in the worktop, that accommodates 1-1 size flat bottom GN containers or dishes with lids (not included). The hot cupboard underneath uses fan blown heated to evenly distribute heat around the cupboard. Behind lift-off rear sliding s/steel cupboard doors are two tiers or removable, height adjustable grid shelves for plate/container storage.



Rear View

BASE MODEL

Model	Weight (kg)	Dimensions (LxDxH mm)	GN Capacity (1/1)	Total Power (No Gantry)(kW)	Total Power (+ Hot Gantry)(kW)	List Price
GHP2	49	825 x 700 x 900	2	2.19	2.56	£1,939
GHP3	69	1175 x 700 x 900	3	2.37	2.97	£2,304
GHP4	92	1525 x 700 x 900	4	2.55	2.95	£2,689
GHP5	114	1875 x 700 x 900	5	2.73	2.83	£3,095

All models supplied with 3m lead & 13amp UK plug 13A | 230V | 50Hz

*All option prices are to be added onto base unit prices for total unit price

Gantry Options



Hot gantries s/steel, reversible curved glass sneeze screen, end glass, self help/ ass. serve use, + 397(h) above worktop, end glass, fitted with 200w quartz infra-red jacketed safety lamps.

HEATED GANTRY

Option	Weight (kg)	Dimensions (LxDxH mm)	GN Capacity (1/1)	Power (kW)	List Price
GHG2	7	825 x 700 x 397	2	0.4	£724
GHG3	9	1175 x 700 x 397	3	0.6	£829
GHG4	12	1525 x 700 x 397	4	0.8	£943
GHG5	16	1875 x 700 x 397	5	1.0	£1,062



Hot island gantry, s/steel, double curved glass sneeze screen, end glass, self help, + 397(h) above worktop, end glass, fitted with 200w quartz infra-red jacketed safety lamps.

HEATED ISLAND GANTRY

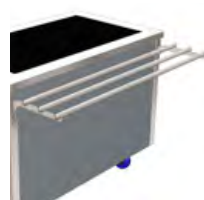
Option	Weight (kg)	Dimensions (LxDxH mm)	GN Capacity (1/1)	Power (kW)	List Price
GHIG2	9	825 x 700 x 397	2	0.4	£823
GHIG3	11	1175 x 700 x 397	3	0.6	£1,076
GHIG4	13	1525 x 700 x 397	4	0.8	£1,268
GHIG5	18	1875 x 700 x 397	5	1.0	£1,414

Trayslide Options



SOLID DROP DOWN

Option	Dimensions (LxD mm)	List Price
GSTS2	825 x 302	£147
GSTS3	1175 x 302	£165
GSTS4	1525 x 302	£179
GSTS5	1875 x 302	£193



TUBULAR DROP DOWN

Option	Dimensions (LxD mm)	List Price
GTTS2	825 x 298	£188
GTTS3	1175 x 298	£239
GTTS4	1525 x 298	£272
GTTS5	1875 x 298	£318

Height Options

Base units as standard are 900mm high

JUNIOR HEIGHTS	Option	Dimensions (H mm)	List Price
	G850H	850	£0
	G800H	800	£0

*Extended lead times



Insert Options



CARVING GCP1AL

Option	Dimensions (LxDxH mm)	List Price
GCP1AL	325 x 599 x 31	£199

Colour Options

*All units as standard come in Merlin Grey.

*Use code below with either 2,3,4 or 5 on the end depending on the size of the unit chosen.



Merlin Grey

Black

Light Grey

White

Buttermilk

Blue

Red

Green

Satin Steel

Oak

Beech

Walnut

NO CODE AS IS STANDARD

GBLAKCHA2-5 GGREYCHA2-5 GWHITCHA2-5

GCREMCHA2-5

GBLUECHA2-5

GPREDCHA2-5

GGRENCHA2-5

GSSTLCHA2-5

GOAKCHA2-5

GBEECCHA2-5

GWALNCHA2-5

£0

£0

£0

£0

£0

£0

£0

£0

£0

£128

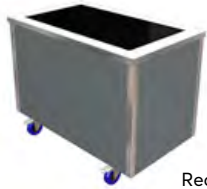
£128

£128

Ceran Top Hot Cupboard (Wall Sited)



Front View



Rear View

The wall sited ceran top hot cupboard fits neatly against walls, in alcoves, recesses, or back to back with island units. The ceran top hot cupboard (no gantry) features a heated ceramic glass hotplate section formed in the work-top, that accommodates 1-1 size flat bottom GN containers or dishes with lids (not included). The hot cupboard underneath uses fan blown heated to evenly distribute heat around the cupboard. Behind lift-off sliding s/steel cupboard doors are two tiers or removable, height adjustable grid shelves for plate/container storage.



DOWNLOAD ALL
TECHNICAL DRAWINGS
from www.cedfabsltd.co.uk

All models supplied with 3m lead & 13amp UK plug 13A | 230V | 50Hz

BASE MODEL

Model	Weight (kg)	Dimensions (LxDxH mm)	GN Capacity (1/1)	Total Power (No Gantry)(kW)	Total Power (+ Hot Gantry)(kW)	List Price
GWSHP2	49	825 x 700 x 900	2	2.19	2.56	£1,939
GWSHP3	69	1175 x 700 x 900	3	2.37	2.97	£2,304
GWSHP4	92	1525 x 700 x 900	4	2.55	2.95	£2,689
GWSHP5	114	1875 x 700 x 900	5	2.73	2.83	£3,095

*All option prices are to be added onto base unit prices for total unit price

Gantry Options



Wall sited hot gantries, s/steel, curved glass, sneeze screen, end glass, self help use only, + 397(h) above worktop, fitted with 200W quartz infra-red jacketed safety lamps.

HEATED GANTRY

Option	Weight (kg)	Dimensions (LxDxH mm)	GN Capacity (1/1)	Power (kW)	List Price
GWSHG2	7	825 x 700 x 397	2	0.4	£724
GWSHG3	9	1175 x 700 x 397	3	0.6	£829
GWSHG4	12	1525 x 700 x 397	4	0.8	£943
GWSHG5	16	1875 x 700 x 397	5	1.0	£1,062



Trayslide Options



SOLID DROP DOWN

Option	Dimensions (LxD mm)	List Price
GSTS2	825 x 302	£147
GSTS3	1175 x 302	£165
GSTS4	1525 x 302	£179
GSTS5	1875 x 302	£193



TUBULAR DROP DOWN

Option	Dimensions (LxD mm)	List Price
GTTS2	825 x 298	£188
GTTS3	1175 x 298	£239
GTTS4	1525 x 298	£272
GTTS5	1875 x 298	£318

Height Options

Base units as standard are 900mm high

Option	Dimensions (H mm)	List Price
G850H	850	£0
G800H	800	£0

*Extended lead times



Insert Options



CARVING GCP1AL

Option	Dimensions (LxDxH mm)	List Price
GCP1AL	325 x 599 x 31	£199

Colour Options

*All units as standard come in Merlin Grey.

*Use code below with either 2,3,4 or 5 on the end depending on the size of the unit chosen.



Merlin Grey



Black



Light Grey



White



Buttermilk



Blue



Red



Green



Satin Steel



Oak



Beech

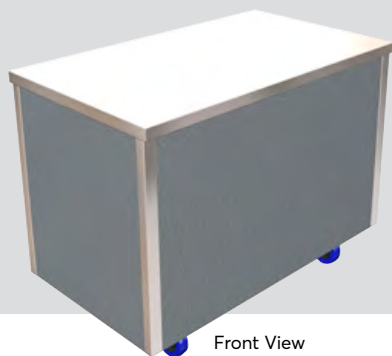


Walnut

NO CODE AS IS STANDARD GBLAKCHA2-5 GGREYCHA2-5 GWHITCHA2-5 GCREMCHA2-5 GBLUECHA2-5 GPREDCHA2-5 GGRENCHA2-5 GSSLCHA2-5 GOAKCHA2-5 GBEECCHA2-5 GWALNCHA2-5

£0 £0 £0 £0 £0 £0 £0 £0 £0 £0 £128 £128 £128

Hot Cupboard Plain Top



Front View

The plain top hot cupboard (no gantry) features a fan blown heating assembly which evenly distributes heat around the space. The model features a s/steel plain work surface and a rear store cupboard under. Behind lift-off rear sliding s/ steel cupboard doors are two tiers or removable, height adjustable grid shelves for plate/container storage.

Height Options

Base units as standard are 900mm high

JUNIOR HEIGHTS	Option	Dimensions (H mm)	List Price
	G850H G800H	850 800	£0 £0

*Extended lead times

All models supplied with 3m lead & 13amp UK plug 13A | 230V | 50Hz



Rear View

BASE MODEL

Model	Weight (kg)	Dimensions (LxDxH mm)	GN Capacity (1/1)	Total Power (No Gantry)(kW)	Total Power (+Hot Gantry)(kW)	Total Power (+LED Gantry)(kW)	List Price
GHCP2	45	825 x 700 x 900	2	1.83	2.23	1.83	£1,713
GHCP3	67	1175 x 700 x 900	3	1.83	2.43	1.84	£1,926
GHCP4	90	1525 x 700 x 900	4	1.83	2.63	1.84	£2,165
GHCP5	112	1875 x 700 x 900	5	1.83	2.83	1.85	£2,390

*All option prices are to be added onto base unit prices for total unit price

Gantry Options



Ambient gantries, s/steel, c/w LED lighting, opaque cover, colour 4000k, reversible single curved glass sneeze screen, self help / ass. serve use, +397(h) above worktop and end glass.

AMBIENT GANTRY

Option	Weight (kg)	Dimensions (LxDxH mm)	GN Capacity (1/1)	Power (kW)	List Price
GAG2	7	825 x 700 x 397	2	0.008	£670
GAG3	9	1175 x 700 x 397	3	0.014	£697
GAG4	12	1525 x 700 x 397	4	0.016	£737
GAG5	16	1875 x 700 x 397	5	0.022	£783



Ambient self help island gantries, s/steel, double curved sneeze screen glass, end glass, c/w LED lighting, opaque cover, colour 4000k, self help use, +397(h) above worktop and end glass.

ISLAND AMBIENT GANTRY

Option	Weight (kg)	Dimensions (LxDxH mm)	GN Capacity (1/1)	Power (kW)	List Price
GAIG2	9	825 x 700 x 397	2	0.008	£823
GAIG3	11	1175 x 700 x 397	3	0.014	£1,076
GAIG4	13	1525 x 700 x 397	4	0.016	£1,268
GAIG5	18	1875 x 700 x 397	5	0.022	£1,414



Ambient assisted service deli gantries, s/steel, full height curved glass front, end glass, ambient glass mid shelf (not chilled), c/w LED lighting, opaque cover, colour 4000k, ass. service use, +540(h) above worktop.

DELI AMBIENT GANTRY

Option	Weight (kg)	Dimensions (LxDxH mm)	GN Capacity (1/1)	Power (kW)	List Price
GADG2	12	825 x 700 x 540	2	0.008	£1,022
GADG3	17	1175 x 700 x 540	3	0.014	£1,115
GADG4	21	1525 x 700 x 540	4	0.016	£1,215
GADG5	26	1875 x 700 x 540	5	0.022	£1,408



Hot gantries, s/steel, reversible single curved glass sneeze screen, self help / ass. serve use, +397(h) above worktop, reinforced worktop for heat, fitted with 200W quartz infra-red jacketed safety lamps.

HOT GANTRY

Option	Weight (kg)	Dimensions (LxDxH mm)	GN Capacity (1/1)	Power (kW)	List Price
GHG2PTHC	7	825 x 700 x 397	2	0.4	£724
GHG3PTHC	9	1175 x 700 x 397	3	0.6	£829
GHG4PTHC	12	1525 x 700 x 397	4	0.8	£943
GHG5PTHC	16	1875 x 700 x 397	5	1.0	£1,062

Trayslide Options



SOLID DROP DOWN

Option	Dimensions (LxD mm)	List Price
GSTS2	825 x 302	£147
GSTS3	1175 x 302	£165
GSTS4	1525 x 302	£179
GSTS5	1875 x 302	£193



TUBULAR DROP DOWN

Option	Dimensions (LxD mm)	List Price
GTTS2	825 x 298	£188
GTTS3	1175 x 298	£239
GTTS4	1525 x 298	£272
GTTS5	1875 x 298	£318

Colour Options *for colour previews & prices refer to next page

*All units as standard come in Merlin Grey.

*Use code below with either 2,3,4 or 5 on the end depending on the size of the unit chosen.

Merlin Grey	Black	Light Grey	White	Buttermilk	Blue	Red	Green	Satin Steel	Oak	Beech	Walnut
NO CODE AS IS STANDARD	GBLAKCHA2-5	GGREYCHA2-5	GWHITCHA2-5	GCREMCHA2-5	GBLUECHA2-5	GPREDCHA2-5	GGRENCHA2-5	GSSTLCHA2-5	GOAKCHA2-5	GBEECCHA2-5	GWALNCHA2-5

Hot Cupboard Plain Top (Wall Sited)



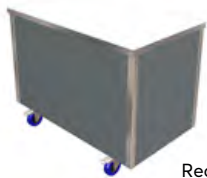
Front View

The wall sited plain top hot cupboard fits neatly against walls, in alcoves, recesses, or back to back with island units. The plain top hot cupboard (no gantry) features a fan blown heated assembly which evenly distributes heat around the space. The model features a s/steel plain work surface and a rear store cupboard under. Behind lift-off rear sliding s/steel cupboard doors are two tiers or removable, height adjustable grid shelves for plate/container storage.



DOWNLOAD ALL
TECHNICAL DRAWINGS
from www.cedfabsltd.co.uk

All models supplied with 3m lead & 13amp UK plug 13A | 230V | 50Hz



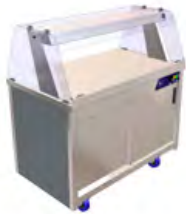
Rear View

BASE MODEL

Model	Weight (kg)	Dimensions (LxDxH mm)	GN Capacity (1/1)	Total Power (No Gantry)(kW)	Total Power (+Hot Gantry)(kW)	Total Power (+LED Gantry)(kW)	List Price
GWSHCP2	45	825 x 700 x 900	2	1.83	2.23	1.83	£1,713
GWSHCP3	67	1175 x 700 x 900	3	1.83	2.43	1.84	£1,926
GWSHCP4	90	1525 x 700 x 900	4	1.83	2.63	1.84	£2,165
GWSHCP5	112	1875 x 700 x 900	5	1.83	2.83	1.85	£2,390

*All option prices are to be added onto base unit prices for total unit price

Gantry Options



Wall sited ambient gantries, s/steel, c/w LED lighting, opaque cover, colour 4000k, single curved glass sneeze screen, self help use, +397(h) above worktop and end glass.

AMBIENT GANTRY

Option	Weight (kg)	Dimensions (LxDxH mm)	GN Capacity (1/1)	Power (kW)	List Price
GWSAG2	7	825 x 700 x 397	2	0.008	£670
GWSAG3	9	1175 x 700 x 397	3	0.014	£697
GWSAG4	12	1525 x 700 x 397	4	0.016	£737
GWSAG5	16	1875 x 700 x 397	5	0.022	£783



Hot gantries, s/steel, single curved glass sneeze screen, self help use, +397(h) above worktop, reinforced worktop for heat, fitted with 200W quartz infra-red jacketed safety lamps.

HOT GANTRY

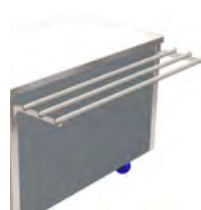
Option	Weight (kg)	Dimensions (LxDxH mm)	GN Capacity (1/1)	Power (kW)	List Price
GWSHG2PTHC	7	825 x 700 x 397	2	0.4	£724
GWSHG3PTHC	9	1175 x 700 x 397	3	0.6	£829
GWSHG4PTHC	12	1525 x 700 x 397	4	0.8	£943
GWSHG5PTHC	16	1875 x 700 x 397	5	1.0	£1,062

Trayslide Options



SOLID
DROP DOWN

Option	Dimensions (LxD mm)	List Price
GSTS2	825 x 302	£147
GSTS3	1175 x 302	£165
GSTS4	1525 x 302	£179
GSTS5	1875 x 302	£193



TUBULAR
DROP DOWN

Option	Dimensions (LxD mm)	List Price
GTTS2	825 x 298	£188
GTTS3	1175 x 298	£239
GTTS4	1525 x 298	£272
GTTS5	1875 x 298	£318

Height Options

Base units as standard are 900mm high

JUNIOR HEIGHTS	Option	Dimensions (H mm)	List Price
	G850H	850	£0
	G800H	800	£0

*Extended lead times



Colour Options

*All units as standard come in Merlin Grey.

*Use code below with either 2,3,4 or 5 on the end depending on the size of the unit chosen.



Merlin Grey



Black



Light Grey



White



Buttermilk



Blue



Red



Green



Satin Steel



Oak



Beech



Walnut

NO CODE AS IS STANDARD	GBLAKCHA2-5	GGREYCHA2-5	GWHITCHA2-5	GCREMCHA2-5	GBLUECHA2-5	GPREDCHA2-5	GGRENCHA2-5	GSSTLCHA2-5	GOAKCHA2-5	GBEECCHA2-5	GWALNCHA2-5
------------------------	-------------	-------------	-------------	-------------	-------------	-------------	-------------	-------------	------------	-------------	-------------

£0

£0

£0

£0

£0

£0

£0

£0

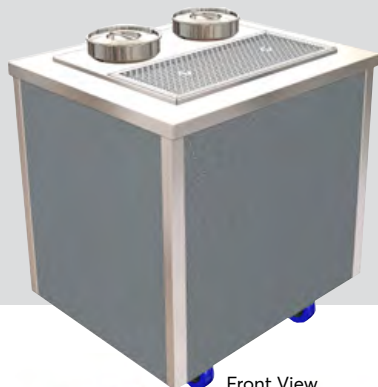
£0

£128

£128

£128

Soup Station (Reversible Top)



Front View



Front View



Rear View

BASE MODEL

The soup station has a reversible bain marie insert within a s/steel worktop. Standard insert position is assisted service = 2x 4.5L soup pots to front, 1x drip tray to rear. Optional insert position is self help = 1x drip tray to front, 2x 4.5L soup pots to rear. (The insert lifts out for reversing to a self help position & allows simple repositioning of the heating element under. The ambient storage cupboard underneath has 2 tier adjustable grid shelves (both removable). The rear sliding s/steel cupboard doors are removable

Height Options

Base units as standard are 900mm high

JUNIOR HEIGHTS

Option	Dimensions (H mm)	List Price
G850H	850	£0
G800H	800	£0

*Extended lead times

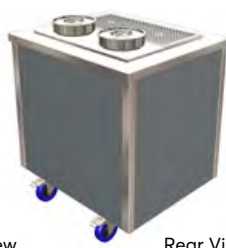
All models supplied with 3m lead & 13amp UK plug 13A | 230V | 50Hz

Model	Weight (kg)	Dimensions (LxDxH mm)	GN Capacity (1/1)	Total Power (kW)	List Price
GSUP2	45	825 x 700 x 900	2	0.75	£2,072

Wall Sited Base Unit



Front View



Rear View

BASE MODEL

Model	Weight (kg)	Dimensions (LxDxH mm)	GN Capacity (1/1)	Total Power (kW)	List Price
GWSSUP2	45	825 x 700 x 900	2	0.75	£2,072

*All option prices are to be added onto base unit prices for total unit price

Trayslide Options



SOLID DROP DOWN

Option	Dimensions (LxD mm)	List Price
GSTS2	825 x 302	£147



TUBULAR DROP DOWN

Option	Dimensions (LxD mm)	List Price
GTTS2	825 x 298	£188



Colour Options

*All units as standard come in Merlin Grey.

Merlin Grey	Black	Light Grey	White	Buttermilk	Blue	Red	Green	Satin Steel	Oak	Beech	Walnut
NO CODE AS IS STANDARD	GBLAKCHA2	GGREYCHA2	GWHITCHA2	GCREMCHA2	GBLUECHA2	GPREDCHA2	GGRENCHA2	GSSTLCHA2	GOAKCHA2	GBEECCHA2	GWALNCHA2
£0	£0	£0	£0	£0	£0	£0	£0	£0	£128	£128	£128

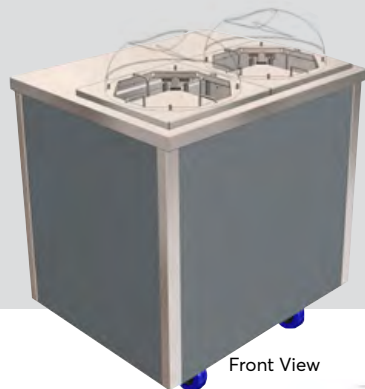
Colour Options (Wall Sited)

*All units as standard come in Merlin Grey.



Merlin Grey	Black	Light Grey	White	Buttermilk	Blue	Red	Green	Satin Steel	Oak	Beech	Walnut
NO CODE AS IS STANDARD	GBLAKWSA2	GGREYWSA2	GWHITWSA2	GCREMWSA2	GBLUEWSA2	GPREDWSA2	GGRENWSA2	GSSTLWSA2	GOAKWSA2	GBEECWSA2	GWALNWSA2
£0	£0	£0	£0	£0	£0	£0	£0	£0	£128	£128	£128

Heated Twin Plate Dispenser



Front View

The twin heated plate dispenser has two spring loaded, self levelling plate storage sections within a s/steel worktop. Each spring loaded dispenser section is adjusted by lifting the four plate guide rods inwards/outwards, to enable the storage of various diameter plates, between 8"-12" (205mm-305mm) with a total capacity of 88-106 plates, depending on type. The spring keeps the plates below rising to the top of the dispenser, as top plates are removed. Springs can be easily removed to facilitate smaller and lighter weight plates. Each plate storage section is adjusted is supplied with a stackable polycarbonate lid, for use during the plate heating process. Also available as a wall sited version.



DOWNLOAD ALL
TECHNICAL DRAWINGS
from www.cedfabsltd.co.uk

All models supplied with 3m lead & 13amp UK plug 13A | 230V | 50Hz



Front View

Rear View

BASE MODEL

Model	Weight (kg)	Dimensions (LxDxH mm)	GN Capacity (1/1)	Total Power (kW)	List Price
GHPD2	55	825 x 700 x 900	2	1.4	£2,583

Wall Sited Base Unit



Front View

Rear View

BASE MODEL

Model	Weight (kg)	Dimensions (LxDxH mm)	GN Capacity (1/1)	Total Power (kW)	List Price
GWSHPD2	55	825 x 700 x 900	2	1.4	£2,583

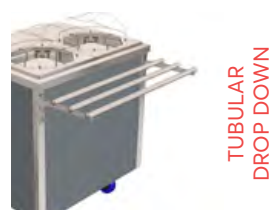
*All option prices are to be added onto base unit prices for total unit price

Trayslide Options



SOLID
DROP DOWN

Option	Dimensions (LxD mm)	List Price
GSTS2	825 x 302	£147



TUBULAR
DROP DOWN

Option	Dimensions (LxD mm)	List Price
GTTS2	825 x 298	£188

FOR HEIGHT
OPTIONS REFER TO
PREVIOUS PAGE



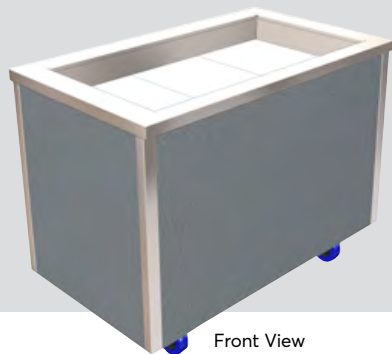
Colour Options

*All units as standard come in Merlin Grey.



Merlin Grey	Black	Light Grey	White	Buttermilk	Blue	Red	Green	Satin Steel	Oak	Beech	Walnut
NO CODE AS IS STANDARD	GBLAKCHA2	GGREYCHA2	GWHITCHA2	GCREMCHA2	GBLUECHA2	GPREDCHA2	GGRENCHA2	GSSTLCHA2	GOAKCHA2	GBEECCHA2	GWALNCHA2
£0	£0	£0	£0	£0	£0	£0	£0	£0	£128	£128	£128

Eutectic Plate Cold Well



Front View

The eutectic plate cold well features a series of removable, pre-frozen s/steel plates which sit within the base of the display area. The plates contain a cooling gel and provide a contact cooled surface for storage of fruit, bottled drinks or liquid desserts such as yoghurt pots etc. The display keeps pre-chilled product cold for a typical 2-3 hour lunch period.

Height Options

Base units as standard are 900mm high

JUNIOR HEIGHTS	Option	Dimensions (H mm)	List Price
	G850H G800H	850 800	£0 £0

*Extended lead times

Supplied with 3m lead & 13amp UK plug 13A | 230V | 50Hz if optional gantries are added.



Rear View

BASE MODEL

Model	Weight (kg)	Dimensions (LxDxH mm)	GN Capacity (1/1)	Total Power (No Gantry)(kW)	Total Power (+ LED Gantry)(kW)	List Price
GEW2	60	825 x 700 x 900	2	N/A	0.008	£1,807
GEW3	89	1175 x 700 x 900	3	N/A	0.014	£2,271
GEW4	119	1525 x 700 x 900	4	N/A	0.018	£2,749
GEW5	147	1875 x 700 x 900	5	N/A	0.022	£3,173

*All option prices are to be added onto base unit prices for total unit price

Gantry Options



Ambient gantries, s/steel, c/w LED lighting, opaque cover, colour 4000k, reversible single curved glass sneeze screen, self help / ass. serve use, +397(h) above worktop and end glass.

AMBIENT GANTRY

Option	Weight (kg)	Dimensions (LxDxH mm)	GN Capacity (1/1)	Power (kW)	List Price
GAG2	7	825 x 700 x 397	2	0.008	£670
GAG3	9	1175 x 700 x 397	3	0.014	£697
GAG4	12	1525 x 700 x 397	4	0.016	£737
GAG5	16	1875 x 700 x 397	5	0.022	£783



Ambient self help island gantries, s/steel, double curved sneeze screen glass, end glass, c/w LED lighting, opaque cover, colour 4000k, self help use, +397(h) above worktop and end glass.

ISLAND AMBIENT GANTRY

Option	Weight (kg)	Dimensions (LxDxH mm)	GN Capacity (1/1)	Power (kW)	List Price
GAIG2	9	825 x 700 x 397	2	0.008	£823
GAIG3	11	1175 x 700 x 397	3	0.014	£1,076
GAIG4	13	1525 x 700 x 397	4	0.016	£1,268
GAIG5	18	1875 x 700 x 397	5	0.022	£1,414



Ambient assisted service deli gantry, s/steel, full height curved glass front, end glass, ambient glass mid shelf (not chilled), c/w LED lighting, opaque cover, colour 4000k, ass. service use, +540(h) above worktop.

DELI AMBIENT GANTRY

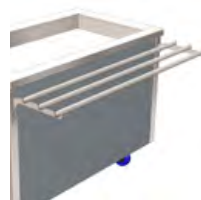
Option	Weight (kg)	Dimensions (LxDxH mm)	GN Capacity (1/1)	Power (kW)	List Price
GADG2	12	825 x 700 x 540	2	0.008	£1,022
GADG3	17	1175 x 700 x 540	3	0.014	£1,115
GADG4	21	1525 x 700 x 540	4	0.016	£1,215
GADG5	26	1875 x 700 x 540	5	0.022	£1,408

Trayslide Options



SOLID DROP DOWN

Option	Dimensions (LxD mm)	List Price
GSTS2	825 x 302	£147
GSTS3	1175 x 302	£165
GSTS4	1525 x 302	£179
GSTS5	1875 x 302	£193



TUBULAR DROP DOWN

Option	Dimensions (LxD mm)	List Price
GTTS2	825 x 298	£188
GTTS3	1175 x 298	£239
GTTS4	1525 x 298	£272
GTTS5	1875 x 298	£318

Insert Options

Cannot be used with GAIG2-GAIG5 options.

For use with eutectic well only.

For use with GEPS2-GEPS5 only.



PREP SHELF
(+ 1 CUTTING BOARD)

Option	Dimensions (LxDxH above worktop mm)	List Price
GEPS2	720 x 180 x 15	£292
GEPS3	1070 x 180 x 15	£306
GEPS4	1420 x 180 x 15	£318
GEPS5	1770 x 180 x 15	£332



ADDITIONAL COOLING PLATE

Option	Dimensions (LxDxH mm)	List Price
GEP1	530 x 325 x 45	£165

CUTTING BOARD

Option	Dimensions (LxDxH mm)	List Price
KCB1	350 x 250 x 30	£147

Colour Options *refer to next page for prices & colour previews

*All units as standard come in Merlin Grey.

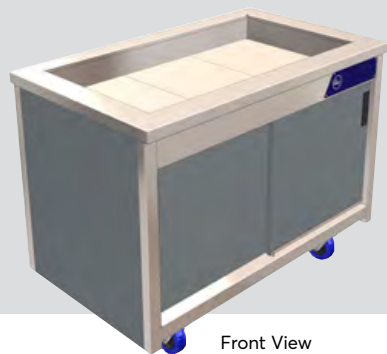
*Use code below with either 2,3,4 or 5 on the end depending on the size of the unit chosen.

Merlin Grey Black Light Grey White Buttermilk Blue Red Green Satin Steel Oak Beech Walnut

NO CODE
AS IS
STANDARD

GBLAKCHA2-5 GGREYCHA2-5 GWHITCHA2-5 GCREMCHA2-5 GBLUECHA2-5 GPREDCHA2-5 GGRENCHA2-5 GSSTLCHA2-5 GOAKCHA2-5 GBEECCHA2-5 GWALNCHA2-5

Eutectic Plate Cold Well (Wall Sited)



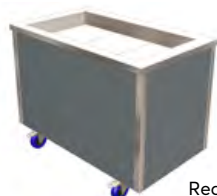
Front View

The wall sited eutectic plate cold well fits neatly against walls, in alcoves, recesses, or back to back with island units. The eutectic plate cold well features a series of removable, pre-frozen s/steel plates which sit within the base of the display area. The plates contain a cooling gel and provide a contact cooled surface for storage of fruit, bottled drinks or liquid desserts such as yoghurt pots etc. The display keeps pre-chilled product cold for a typical 2-3 hour lunch period.



DOWNLOAD ALL
TECHNICAL DRAWINGS
from www.cedfabsltd.co.uk

All models supplied with 3m lead & 13amp UK plug 13A | 230V | 50Hz



Rear View

BASE MODEL

Model	Weight (kg)	Dimensions (LxDxH mm)	GN Capacity (1/1)	Total Power (No Gantry)(kW)	Total Power (+ LED Gantry)(kW)	List Price
GWSEW2	49	825 x 700 x 900	2	N/A	0.008	£1,807
GWSEW3	69	1175 x 700 x 900	3	N/A	0.014	£2,271
GWSEW4	92	1525 x 700 x 900	4	N/A	0.018	£2,749
GWSEW5	114	1875 x 700 x 900	5	N/A	0.022	£3,173

*All option prices are to be added onto base unit prices for total unit price

Gantry Options



Wall sited ambient gantries, s/steel, c/w LED lighting, opaque cover, colour 4000k, reversible single curved glass sneeze screen, self help +397(h) above worktop and end glass.

AMBIENT GANTRY

Option	Weight (kg)	Dimensions (LxDxH mm)	GN Capacity (1/1)	Power (kW)	List Price
GWSAG2	7	825 x 700 x 397	2	0.008	£670
GWSAG3	9	1175 x 700 x 397	3	0.014	£697
GWSAG4	12	1525 x 700 x 397	4	0.016	£737
GWSAG5	16	1875 x 700 x 397	5	0.022	£783



Trayslide Options



SOLID
DROP DOWN

Option	Dimensions (LxD mm)	List Price
GSTS2	825 x 302	£147
GSTS3	1175 x 302	£165
GSTS4	1525 x 302	£179
GSTS5	1875 x 302	£193



TUBULAR
DROP DOWN

Option	Dimensions (LxD mm)	List Price
GTTS2	825 x 298	£188
GTTS3	1175 x 298	£239
GTTS4	1525 x 298	£272
GTTS5	1875 x 298	£318

Height Options

Base units as standard are 900mm high

JUNIOR HEIGHTS	Option	Dimensions (H mm)	List Price
	G850H	850	£0
	G800H	800	£0

*Extended lead times



Insert Options

For use with eutectic well only.

ADDITIONAL
COOLING
PLATE

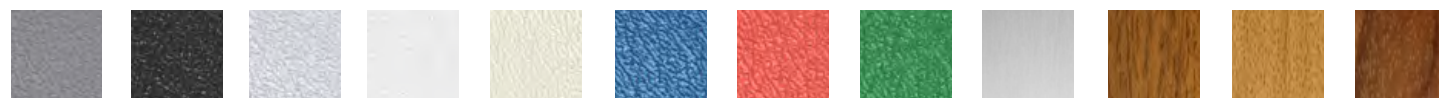


Option	Dimensions (LxDxH mm)	List Price
GEP1	530 x 325 x 45	£165

Colour Options

*All units as standard come in Merlin Grey.

*Use code below with either 2,3,4 or 5 on the end depending on the size of the unit chosen.

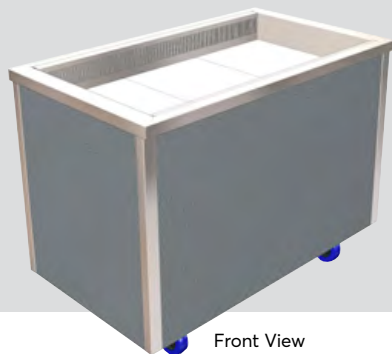


Merlin Grey Black Light Grey White Buttermilk Blue Red Green Satin Steel Oak Beech Walnut

NO CODE AS IS STANDARD GBLAKWSA2-5 GGREYWSA2-5 GWHITWSA2-5 GCREMWSA2-5 GBLUEWSA2-5 GPREDWSA2-5 GGRENWSA2-5 GSSTLWSA2-5 GOAKWSA2-5 GBEECWSA2-5 GWALNWSA2-5

£0 £0 £0 £0 £0 £0 £0 £0 £0 £128 £128 £128

Refrigerated Cold Well



Front View

The cold well circulates a constant stream of cold air within the display area, maintaining pre-chilled food between 2-5°C, just right for your fruit, vegetables, salads & cold drinks. Digital temperature control, auto defrost & auto condensate evaporation tray allow 24 hour operation if required. All the glide range cold displays use a highly efficient, naturally occurring hydrocarbon refrigerant gas which is hermetically sealed within condensing units, which reduce energy consumption and your carbon footprint.



All models supplied with 3m lead & 13amp UK plug 13A | 230V | 50Hz



Rear View

BASE MODEL

Model	Weight (kg)	Dimensions (LxDxH mm)	GN Capacity (1/1)	Total Power (No Gantry)(kW)	Total Power (+ LED Gantry)(kW)	List Price
GCW2HT	95	825 x 700 x 900	2	1.22	1.23	£4,807
GCW3HT	125	1175 x 700 x 900	3	1.22	1.23	£5,113
GCW4HT	155	1525 x 700 x 900	4	1.44	1.46	£5,658
GCW5HT	185	1875 x 700 x 900	5	1.65	1.68	£6,747

*All option prices are to be added onto base unit prices for total unit price

Wall Sited Option



Front View

WALL SITED (BASE PANEL)

Option	Weight (kg)	Dimensions (LxDxH mm)	GN Capacity (1/1)	List Price
GCWWS2	1	740 x 15 x 600	2	£80
GCWWS3	1.3	1090 x 15 x 600	3	£84
GCWWS4	1.6	1440 x 15 x 600	4	£89
GCWWS5	1.8	1790 x 15 x 600	5	£102

Gantry Options



Ambient gantries, s/steel, c/w LED lighting, opaque cover, colour 4000k, reversible single curved glass sneeze screen, self help / ass. serve use, +397(h) above worktop and end glass.

AMBIENT GANTRY

Option	Weight (kg)	Dimensions (LxDxH mm)	GN Capacity (1/1)	Power (kW)	List Price
GAG2	7	825 x 700 x 397	2	0.008	£670
GAG3	9	1175 x 700 x 397	3	0.014	£697
GAG4	12	1525 x 700 x 397	4	0.016	£737
GAG5	16	1875 x 700 x 397	5	0.022	£783



Ambient self help island gantries, s/steel, double curved sneeze screen glass, end glass, c/w LED lighting, opaque cover, colour 4000k, self help use, +397(h) above worktop and end glass.

ISLAND AMBIENT GANTRY

Option	Weight (kg)	Dimensions (LxDxH mm)	GN Capacity (1/1)	Power (kW)	List Price
GAIG2	9	825 x 700 x 397	2	0.008	£823
GAIG3	11	1175 x 700 x 397	3	0.014	£1,076
GAIG4	13	1525 x 700 x 397	4	0.016	£1,268
GAIG5	18	1875 x 700 x 397	5	0.022	£1,414



Ambient assisted service deli gantry, s/steel, full height curved glass front, end glass, ambient glass mid shelf (not chilled), c/w LED lighting, opaque cover, colour 4000k, ass. service use, +540(h) above worktop.

DELI AMBIENT GANTRY

Option	Weight (kg)	Dimensions (LxDxH mm)	GN Capacity (1/1)	Power (kW)	List Price
GADG2	12	825 x 700 x 540	2	0.008	£1,022
GADG3	17	1175 x 700 x 540	3	0.014	£1,115
GADG4	21	1525 x 700 x 540	4	0.016	£1,215
GADG5	26	1875 x 700 x 540	5	0.022	£1,408



Ambient wall sited gantry, s/steel, single curved glass sneeze screen, end glass, c/w LED lighting, opaque cover, colour 4000k, self help use only, +397(h) above worktop.

WALL SITED AMBIENT GANTRY

Option	Weight (kg)	Dimensions (LxDxH mm)	GN Capacity (1/1)	Power (kW)	List Price
GWSAG2	7	825 x 700 x 397	2	0.008	£670
GWSAG3	9	1175 x 700 x 397	3	0.014	£697
GWSAG4	12	1525 x 700 x 397	4	0.016	£737
GWSAG5	16	1875 x 700 x 397	5	0.022	£783

Only available with Wall Sited option.

Product continues onto next page.



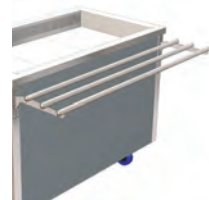
DOWNLOAD ALL
TECHNICAL DRAWINGS
from www.cedfabsltd.co.uk

Trayslide Options



SOLID
DROP DOWN

Option	Dimensions (LxD mm)	List Price
GSTS2	825 x 302	£147
GSTS3	1175 x 302	£165
GSTS4	1525 x 302	£179
GSTS5	1875 x 302	£193



TUBULAR
DROP DOWN

Option	Dimensions (LxD mm)	List Price
GTTS2	825 x 298	£188
GTTS3	1175 x 298	£239
GTTS4	1525 x 298	£272
GTTS5	1875 x 298	£318

Insert Options

Cannot be used with GAIG2 -GAIG5 options.



PREP SHELF
(+ 1 CUTTING BOARD)

Option	Dimensions (LxDx +H above worktop mm)	List Price
GPS2	720 x 180 x 10	£292
GPS3	1070 x 180 x 10	£306
GPS4	1420 x 180 x 10	£318
GPS5	1770 x 180 x 10	£332



COLD
WELL PAN

Option	Dimensions (LxDxH mm)	List Price
GPSC	350 x 500 x 100	£106

Height Options

Base units as standard are 900mm high.

JUNIOR HEIGHTS	Option	Dimensions (H mm)	List Price
	G850H	850	£0
	G800H	800	£0

*Extended lead times



Insert Options continued

For use with GEPS2-GEPS5 only.

CUTTING BOARD	Option	Dimensions (LxDxH mm)	List Price
	KCB1	350 x 250 x 30	£147

Colour Options

*All units as standard come in Merlin Grey.

*Use code below with either 2,3,4 or 5 on the end depending on the size of the unit chosen.



Merlin Grey



Black



Light Grey



White



Buttermilk



Blue



Red



Green



Satin Steel



Oak



Beech



Walnut

NO CODE
AS IS
STANDARD

GBLAKCHA2-5 GGREYCHA2-5 GWHITCHA2-5

GCREMCHA2-5

GBLUECHA2-5

GPREDCHA2-5

GGRENCHA2-5

GSSTLCHA2-5

GOAKCHA2-5

GBEECCHA2-5

GWALNCHA2-5

£0

£0

£0

£0

£0

£0

£0

£0

£0

£128

£128

£128

Colour Options (Wall Sited)

*All units as standard come in Merlin Grey.

*Use code below with either 2,3,4 or 5 on the end depending on the size of the unit chosen.



Merlin Grey



Black



Light Grey



White



Buttermilk



Blue



Red



Green



Satin Steel



Oak



Beech



Walnut

NO CODE
AS IS
STANDARD

GBLAKWSC2-5 GGREYWSC2-5 GWHITWSC2-5

GCREMWSC2-5

GBLUEWSC2-5

GPREDWSC2-5

GGRENWSC2-5

GSSTLWSC2-5

GOAKWSC2-5

GBEECWSC2-5

GWALNWSC2-5

£0

£0

£0

£0

£0

£0

£0

£0

£0

£128

£128

£128

Refrigerated Cold Multideck



Self Help Rear Doors
model shown

The cold multideck circulates a constant stream of cold air within the display area, maintaining pre-chilled foods between 2-5°C, just right for your fruit, vegetables, sandwiches, yoghurts, salads & cold drinks. Digital temperature control, auto defrost & auto condensate evaporation tray allow 24 hour operation if required. All the glide range cold displays use a highly efficient, naturally occurring hydrocarbon refrigerant gas which is hermetically sealed within condensing units, which reduce energy consumption and your carbon footprint.

Height Options

Base units as standard are 900mm high

JUNIOR HEIGHTS	Model	Dimensions (H mm)	List Price
	G850H	850	£0
	G800H	800	£0
	*Extended lead times		

All models supplied with 3m lead & 13amp UK plug 13A | 230V | 50Hz

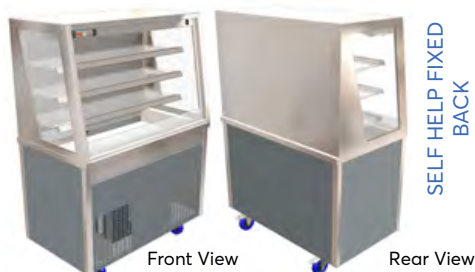


Front View

Rear View

SELF HELP
REAR DOORS

Model	Weight (kg)	Dimensions (LxDxH mm)	Overall Height (mm)	GN Capacity (1/1)	Total Power (kW)	List Price
GMDR2HT	120	825 x 700 x 900	1655	2	1.51	£7,610
GMDR3HT	160	1175 x 700 x 900	1655	3	1.73	£8,247
GMDR4HT	200	1525 x 700 x 900	1655	4	1.73	£9,111
GMDR5HT	240	1875 x 700 x 900	1655	5	2.20	£9,747



Front View

Rear View

SELF HELP FIXED
BACK

Model	Weight (kg)	Dimensions (LxDxH mm)	Overall Height (mm)	GN Capacity (1/1)	Total Power (kW)	List Price
GMDF2HT	110	825 x 700 x 900	1655	2	1.51	£7,392
GMDF3HT	150	1175 x 700 x 900	1655	3	1.73	£8,247
GMDF4HT	190	1525 x 700 x 900	1655	4	1.73	£9,111
GMDF5HT	230	1875 x 700 x 900	1655	5	2.20	£9,747



Front View

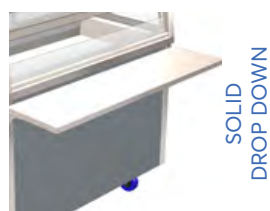
Rear View

ASSISTED SERVICE
REAR DOORS

Model	Weight (kg)	Dimensions (LxDxH mm)	Overall Height (mm)	GN Capacity (1/1)	Total Power (kW)	List Price
GMDR2ASHT	122	825 x 700 x 900	1655	2	1.51	£7,795
GMDR3ASHT	163	1175 x 700 x 900	1655	3	1.75	£8,493
GMDR4ASHT	203	1525 x 700 x 900	1655	4	1.82	£9,415
GMDR5ASHT	244	1875 x 700 x 900	1655	5	2.20	£10,107

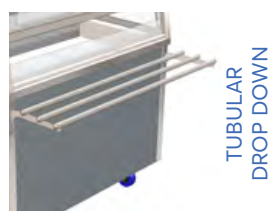
*All option prices are to be added onto base unit prices for total unit price

Trayslide & Night Blind Options



SOLID
DROP DOWN

Option	Dimensions (LxD mm)	List Price
GSTS2	825 x 302	£147
GSTS3	1175 x 302	£165
GSTS4	1525 x 302	£179
GSTS5	1875 x 302	£193



TUBULAR
DROP DOWN

Option	Dimensions (LxD mm)	List Price
GTTS2	825 x 298	£188
GTTS3	1175 x 298	£239
GTTS4	1525 x 298	£272
GTTS5	1875 x 298	£318



NIGHT BLIND
SELF HELP

Option	Dimensions (LxH mm)	List Price
GNB2	770 x 662	£326
GNB3	1120 x 662	£358
GNB4	1470 x 662	£445
GNB5	1820 x 662	£465



Colour Options (Rear Door) *for fixed back, refer to next page codes

*All units as standard come in Merlin Grey.

*Use code below with either 2,3,4 or 5 on the end depending on the size of the unit chosen.

Merlin Grey	Black	Light Grey	White	Buttermilk	Blue	Red	Green	Satin Steel	Oak	Beech	Walnut
NO CODE AS IS STANDARD	GBLAKCHA2-5	GGREYCHA2-5	GWHITCHA2-5	GCREMCHA2-5	GBLUECHA2-5	GPREDCHA2-5	GGRENCHA2-5	GSSTLCHA2-5	GOAKCHA2-5	GBEECCHA2-5	GWALNCHA2-5
£0	£0	£0	£0	£0	£0	£0	£0	£0	£128	£128	£128

Refrigerated Cold Multideck (Security Shutter)



Self Help Rear Doors
model shown

The cold multideck circulates a constant stream of cold air within the display area, maintaining pre-chilled foods between 2-5°C, just right for your fruit, vegetables, sandwiches, yoghurts, salads & cold drinks. Digital temperature control, auto defrost & auto condensate evaporation tray allow 24 hour operation if required. All the glide range cold displays use a highly efficient, naturally occurring hydrocarbon refrigerant gas which is hermetically sealed within condensing units, which reduce energy consumption and your carbon footprint.

This self help multideck features a central locking, heavy duty security shutter.



DOWNLOAD ALL
TECHNICAL DRAWINGS
from www.cedfabsltd.co.uk

All models supplied with 3m lead & 13amp UK plug 13A | 230V | 50Hz



Front View

Rear View

SELF HELP
REAR DOORS

Model	Weight (kg)	Dimensions (LxDxH mm)	Overall Height (mm)	GN Capacity (1/1)	Total Power (kW)	List Price
GMDR2RSHT	130	825 x 700 x 900	1840	2	1.51	£8,751
GMDR3RSHT	171	1175 x 700 x 900	1840	3	1.73	£9,614
GMDR4RSHT	213	1525 x 700 x 900	1840	4	1.73	£10,610
GMDR5RSHT	253	1875 x 700 x 900	1840	5	2.20	£11,474



Front View

Rear View

SELF HELP
FIXED BACK

Model	Weight (kg)	Dimensions (LxDxH mm)	Overall Height (mm)	GN Capacity (1/1)	Total Power (kW)	List Price
GMDF2RSHT	120	825 x 700 x 900	1840	2	1.51	£8,501
GMDF3RSHT	159	1175 x 700 x 900	1840	3	1.73	£9,614
GMDF4RSHT	199	1525 x 700 x 900	1840	4	1.73	£10,610
GMDF5RSHT	235	1875 x 700 x 900	1840	5	2.20	£11,474

*All option prices are to be added onto base unit prices for total unit price



Height Options

Base units as standard are 900mm high

JUNIOR HEIGHTS	Option	Dimensions (H mm)	List Price
	G850H	850	£0
	G800H	800	£0

*Extended lead times

Trayslide & Night Blind Options



SOLID
DROP DOWN

Option	Dimensions (LxD mm)	List Price
GSTS2	825 x 302	£147
GSTS3	1175 x 302	£165
GSTS4	1525 x 302	£179
GSTS5	1875 x 302	£193



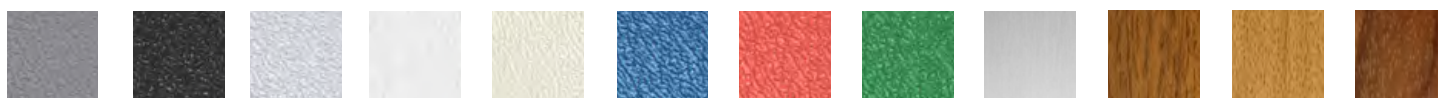
TUBULAR
DROP DOWN

Option	Dimensions (LxD mm)	List Price
GTTS2	825 x 298	£188
GTTS3	1175 x 298	£239
GTTS4	1525 x 298	£272
GTTS5	1875 x 298	£318

Colour Options (Fixed Back) *for rear doors, refer to previous page codes

*All units as standard come in Merlin Grey.

*Use code below with either 2,3,4 or 5 on the end depending on the size of the unit chosen.



Merlin Grey Black Light Grey White Buttermilk Blue Red Green Satin Steel Oak Walnut Beech

NO CODE AS IS STANDARD GBLAKWSC2-5 GGREYWSC2-5 GWHITWSC2-5 GCREMWSC2-5 GBLUEWSC2-5 GPREDWSC2-5 GGRENWSC2-5 GSSTLWSC2-5 GOAKWSC2-5 GBEECWSC2-5 GWALNWSC2-5

£0 £0 £0 £0 £0 £0 £0 £0 £0 £128 £128 £128

Ambient Multideck



Self Help Rear Doors
model shown

The ambient multideck is ideal for displaying confectionery, fruit, baked goods or drinks. The display features 3 tiers of sturdy 10mm thick glass shelving - each shelf fitted with point of sale ticket strips. Illumination is provided by LED lighting. Storage cupboard with sliding doors below. The multideck is available as self help or assisted service with rear doors for loading. The model can also be produced as a fixed back version for wall sited use.

Height Options

Base units as standard are 900mm high

JUNIOR HEIGHTS	Option	Dimensions (H mm)	List Price
	G850H	850	£0
	G800H	800	£0

*Extended lead times

All models supplied with 3m lead & 13amp UK plug 13A | 230V | 50Hz



Front View

Rear View

SELF HELP
REAR DOORS

Model	Weight (kg)	Dimensions (LxDxH mm)	Overall Height (mm)	GN Capacity (1/1)	Total Power (kW)	List Price
GMDA2	90	825 x 700 x 900	1655	2	0.1	£3,519
GMDA3	120	1175 x 700 x 900	1655	3	0.1	£4,004
GMDA4	168	1525 x 700 x 900	1655	4	0.1	£4,540
GMDA5	202	1875 x 700 x 900	1655	5	0.2	£5,010



Front View

Rear View

SELF HELP FIXED
BACK

Model	Weight (kg)	Dimensions (LxDxH mm)	Overall Height (mm)	GN Capacity (1/1)	Total Power (kW)	List Price
GMDA2FB	80	825 x 700 x 900	1655	2	0.1	£3,519
GMDA3FB	110	1175 x 700 x 900	1655	3	0.1	£3,998
GMDA4FB	158	1525 x 700 x 900	1655	4	0.1	£4,540
GMDA5FB	192	1875 x 700 x 900	1655	5	0.2	£5,010



Front View

Rear View

ASSISTED SERVICE
REAR DOORS

Model	Weight (kg)	Dimensions (LxDxH mm)	Overall Height (mm)	GN Capacity (1/1)	Total Power (kW)	List Price
GMDA2AS	100	825 x 700 x 900	1655	2	0.1	£3,705
GMDA3AS	133	1175 x 700 x 900	1655	3	0.1	£4,243
GMDA4AS	179	1525 x 700 x 900	1655	4	0.1	£4,645
GMDA5AS	215	1875 x 700 x 900	1655	5	0.2	£5,169

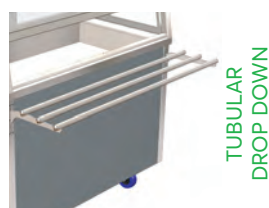
*All option prices are to be added onto base unit prices for total unit price

Trayslide & Night Blind Options



SOLID
DROP DOWN

Option	Dimensions (LxD mm)	List Price
GSTS2	825 x 302	£147
GSTS3	1175 x 302	£165
GSTS4	1525 x 302	£179
GSTS5	1875 x 302	£193



TUBULAR
DROP DOWN

Option	Dimensions (LxD mm)	List Price
GTTS2	825 x 298	£188
GTTS3	1175 x 298	£239
GTTS4	1525 x 298	£272
GTTS5	1875 x 298	£318



NIGHT BLIND
SELF HELP

Option	Dimensions (LxH mm)	List Price
GNB2	770 x 662	£326
GNB3	1120 x 662	£358
GNB4	1470 x 662	£445
GNB5	1820 x 662	£465



Colour Options (Rear Door) *for fixed back, refer to next page codes

*All units as standard come in Merlin Grey.

*Use code below with either 2,3,4 or 5 on the end depending on the size of the unit chosen.

Merlin Grey	Black	Light Grey	White	Buttermilk	Blue	Red	Green	Satin Steel	Oak	Beech	Walnut
NO CODE AS IS STANDARD	GBLAKCHA2-5	GGREYCHA2-5	GWHITCHA2-5	GCREMCHA2-5	GBLUECHA2-5	GPREDCHA2-5	GGRENCHA2-5	GSSTLCHA2-5	GOAKCHA2-5	GBEECCHA2-5	GWALNCHA2-5
£0	£0	£0	£0	£0	£0	£0	£0	£0	£128	£128	£128

Ambient Multideck (Security Shutter)



Self Help Rear Doors
model shown

The ambient multideck is ideal for displaying confectionery, fruit, baked goods or drinks. The display features 3 tiers of sturdy 10mm thick glass shelving - each shelf fitted with point of sale ticket strips. Illumination is provided by LED lighting. Storage cupboard with sliding doors below. The multideck is available as self help or assisted service with rear doors for loading. The model can also be produced as a fixed back version for wall sited use.

This self help multideck features a central locking, heavy duty security shutter.



DOWNLOAD ALL
TECHNICAL DRAWINGS
from www.cedfabsltd.co.uk

All models supplied with 3m lead & 13amp UK plug 13A | 230V | 50Hz



Front View

Rear View

SELF HELP
REAR DOORS

Model	Weight (kg)	Dimensions (LxDxH mm)	Overall Height (mm)	GN Capacity (1/1)	Total Power (kW)	List Price
GMDA2RS	95	825 x 700 x 900	1840	2	0.1	£4,525
GMDA3RS	129	1175 x 700 x 900	1840	3	0.1	£5,214
GMDA4RS	179	1525 x 700 x 900	1840	4	0.1	£5,997
GMDA5RS	215	1875 x 700 x 900	1840	5	0.2	£6,687



Front View

Rear View

SELF HELP
FIXED BACK

Model	Weight (kg)	Dimensions (LxDxH mm)	Overall Height (mm)	GN Capacity (1/1)	Total Power (kW)	List Price
GMDA2FBRS	85	825 x 700 x 900	1840	2	0.1	£4,527
GMDA3FBRS	119	1175 x 700 x 900	1840	3	0.1	£5,211
GMDA4FBRS	166	1525 x 700 x 900	1840	4	0.1	£5,997
GMDA5FBRS	200	1875 x 700 x 900	1840	5	0.2	£6,687

*All option prices are to be added onto base unit prices for total unit price



Height Options

Base units as standard are 900mm high

JUNIOR HEIGHTS	Option	Dimensions (H mm)	List Price
	G850H	850	£0
	G800H	800	£0

Trayslide Options



SOLID
DROP DOWN

Option	Dimensions (LxD mm)	List Price
GSTS2	825 x 302	£147
GSTS3	1175 x 302	£165
GSTS4	1525 x 302	£179
GSTS5	1875 x 302	£193



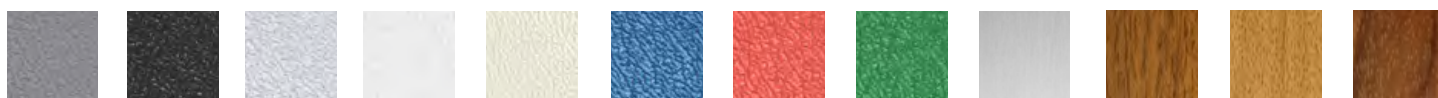
TUBULAR
DROP DOWN

Option	Dimensions (LxD mm)	List Price
GTTS2	825 x 298	£188
GTTS3	1175 x 298	£239
GTTS4	1525 x 298	£272
GTTS5	1875 x 298	£318

Colour Options (Fixed Back) *for rear doors, refer to previous page codes

*All units as standard come in Merlin Grey.

*Use code below with either 2,3,4 or 5 on the end depending on the size of the unit chosen.

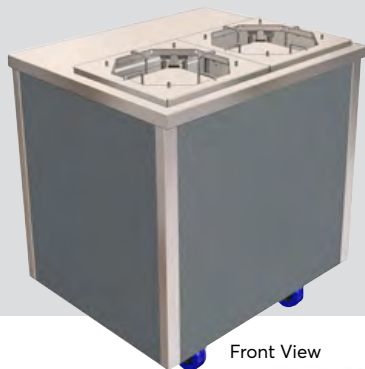


Merlin Grey Black Light Grey White Buttermilk Blue Red Green Satin Steel Oak Beech Walnut

NO CODE AS IS STANDARD GBLAKWSC2-5 GGREYWSC2-5 GWHITWSC2-5 GCREMWSC2-5 GBLUEWSC2-5 GPREDWSC2-5 GGRENWSC2-5 GSSTLWSC2-5 GOAKWSC2-5 GBEECWSC2-5 GWALNWSC2-5

£0 £0 £0 £0 £0 £0 £0 £0 £0 £128 £128 £128

Ambient Twin Plate Dispenser



Front View

The Glide twin ambient plate dispenser has two spring loaded, self levelling plate storage sections within a s/steel worktop. Each spring loaded dispenser section is adjusted by lifting the four plate guides rods outwards/inwards, to enable the storage of various diameter plates, between 8"-12"(205mm-305mm) with a total capacity of 88-106 plates, depending on type. The springs keep the plates below rising to the top of the dispenser, as top plates are removed.

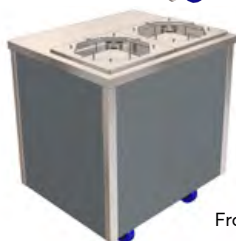
Height Options

Base units as standard are 900mm high

JUNIOR
HEIGHTS

Model	Dimensions (H mm)	List Price
G850H	850	£0
G800H	800	£0

*Extended lead times



Front View



Rear View

BASE MODEL

Model	Weight (kg)	Dimensions (LxDxH mm)	GN Capacity (1/1)	Total Power (kW)	List Price
GAPD2	54	825 x 700 x 900	2	N/A	£2,072

Wall Sited Base Unit



Front View



Rear View

BASE MODEL

Model	Weight (kg)	Dimensions (LxDxH mm)	GN Capacity (1/1)	Total Power (kW)	List Price
GWSAPD2	54	825 x 700 x 900	2	N/A	£2,072

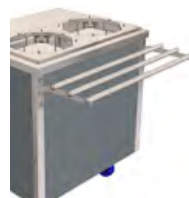
*All option prices are to be added onto base unit prices for total unit price

Trayslide Options



SOLID
DROP DOWN

Option	Dimensions (LxD mm)	List Price
GSTS2	825 x 302	£147



TUBULAR
DROP DOWN

Option	Dimensions (LxD mm)	List Price
GTTS2	825 x 298	£188



Colour Options

*All units as standard come in Merlin Grey.



Merlin Grey



Black



Grey



White



Buttermilk



Blue



Red



Green



Satin Steel



Oak



Beech



Walnut

NO CODE
AS IS
STANDARD

£0

GBLAKCHA2

£0

GGREYCHA2

£0

GWHITCHA2

£0

GCREMCHA2

£0

GBLUECHA2

£0

GPREDCHA2

£0

GGRENCHA2

£0

GSSTLCHA2

£0

GOAKCHA2

£128

GBEECCHA2

£128

GWALNCHA2

£128

Cashier Sections

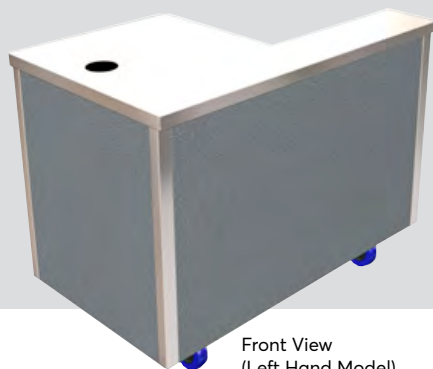


The versatile cashier sections are available as left or right handed work stations; have lockable castors and can be independently positioned or combined with other dining carts to form a payment point. The worktop provides a durable display point for cash register, drawer or Epos system. Each unit is supplied with cable tidy management ports, a double switched socket for till equipment and a 13amp plug with lead. A cashier seating recess complete with a sloping dimpled footrest is also provided for users. This mobile cash section is suitable for most types of cash registers, barcode scanners and Epos systems. It's flexible nature means it can be adapted to different positions around the serving space, avoiding queuing bottlenecks and improving customer flow.

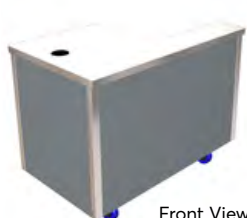


DOWNLOAD ALL
TECHNICAL DRAWINGS
from www.cedfabsltd.co.uk

All models supplied with 3m lead & 13amp UK plug 13A | 230V | 50Hz



Front View
(Left Hand Model)



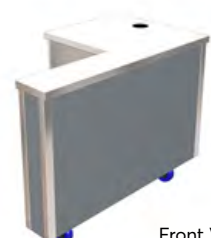
Front View



Rear View

LEFT HAND
BASE MODEL

Model	Weight (kg)	Dimensions (LxDxH mm)	GN Capacity (1/1)	Total Power (kW)	List Price
GCSL	57	1175 x 700 x 900	3	3.0	£1,275



Front View



Rear View

RIGHT HAND
BASE MODEL

Model	Weight (kg)	Dimensions (LxDxH mm)	GN Capacity (1/1)	Total Power (kW)	List Price
GCSR	57	1175 x 700 x 900	3	3.0	£1,275

*All option prices are to be added onto base unit prices for total unit price

Trayslide Options



SOLID
DROP DOWN

Option	Dimensions (LxD mm)	List Price
GSTS3	1175 x 302	£165



TUBULAR
DROP DOWN

Option	Dimensions (LxD mm)	List Price
GTTS3	1175 x 298	£239

FOR HEIGHT OPTIONS REFER
TO PREVIOUS PAGE



Colour Options

*All units as standard come in Merlin Grey.



Merlin Grey



Black



Light Grey



White



Buttermilk



Blue



Red



Green



Satin Steel



Oak



Beech



Walnut

NO CODE
AS IS
STANDARD

GBLAKCS3

GGREYCS3

GWHITCS3

GCREMCS3

GBLUECS3

GPREDCS3

GGRENC3

GSSTLCS3

GOAKCS3

GBEECCS3

GWALNCS3

£0

£0

£0

£0

£0

£0

£0

£0

£0

£128

£128

£128

Cutlery & Tray Pick Up Unit



Front View



Rear View

BASE MODEL

The durable self help cutlery dispenser & open tray pick up cupboard is made in a convenient 2-1GN size and can be positioned in a counter run or wall sited to suit the servery layout. The standard open tray cupboard features a s/steel plain worktop & 730mm wide open access tray storage base area. The 235mm high self help cutlery dispenser has rubber feet to prevent surface scratches. The angled self help front face features 8 x 115mm (diameter) perforated steel cutlery containers, for easily cutlery choice. The top surface houses 4 x 1/4GN x 100mm deep GN containers for condiment sachets, napkins etc.

Height Options

Base units as standard are 900mm high

JUNIOR HEIGHTS

Option	Dimensions (H mm)	List Price
G850H	850	£0
G800H	800	£0

*Extended lead times

Model	Weight (kg)	Dimensions (LxDxH mm)	Overall Height (including dispenser)(mm)	GN Capacity (1/1)	Total Power (kW)	List Price
GCTU	40	825 x 700 x 900	1135	2	N/A	£1,487



*All option prices are to be added onto base unit prices for total unit price

Trayslide Options



SOLID DROP DOWN

Option	Dimensions (LxD mm)	List Price
GSTS2	825 x 302	£147



TUBULAR DROP DOWN

Option	Dimensions (LxD mm)	List Price
GTTS2	825 x 298	£188



Colour Options

*All units as standard come in Merlin Grey.



Merlin Grey



Black



Light Grey



White



Buttermilk



Blue



Red



Green



Satin Steel



Oak



Beech



Walnut

NO CODE
AS IS
STANDARD

£0

GBLAKEP2

£0

GGREYEP2

£0

GWHITEP2

£0

GCREMEP2

£0

GBLUEEP2

£0

GPREDEP2

£0

GGRENEP2

£0

GSSTLEP2

£0

GOAKEP2

£128

GBEECEP2

£128

GWALNEP2

£128

Santising Dispenser Station



This modern auto electronic sanitising dispenser station has lockable castors and can be positioned within a counter run or at the entrance of the dining area. The model has 3x auto electronic sanitising dispensers offering 1500 dose capacity & a gel storage cupboard under. The dispensers are suitable for high alcohol sanitiser gel $\geq 60\%$, have touchless operation from a sensor & use 4x rechargeable AA batteries each (recharging batteries/battery charger included). The s/steel worktop has a removable drip tray (2-4GN x 20mm).



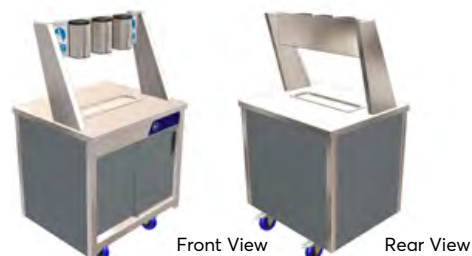
DOWNLOAD ALL
TECHNICAL DRAWINGS
from www.cedfabsltd.co.uk

4 x rechargeable AA batteries (recharging batteries) and battery charger included.



Model	Weight (kg)	Dimensions (LxDxH mm)	Overall Height (mm)	GN Capacity (1/1)	Total Power (kW)	List Price
GSAN2	33	825 x 700 x 900	1440	2	N/A	£2,338

Wall Sited Base Unit



Model	Weight (kg)	Dimensions (LxDxH mm)	Overall Height (mm)	GN Capacity (1/1)	Total Power (kW)	List Price
GWSSAN2	33	825 x 700 x 900	1440	2	N/A	£2,338

*All option prices are to be added onto base unit prices for total unit price

Trayslide Options

Option	Dimensions (LxD mm)	List Price	Option	Dimensions (LxD mm)	List Price
GSTS2	825 x 302	£147	GTTS2	825 x 298	£188

FOR HEIGHT OPTIONS REFER TO PREVIOUS PAGE



Colour Options

*All units as standard come in Merlin Grey.

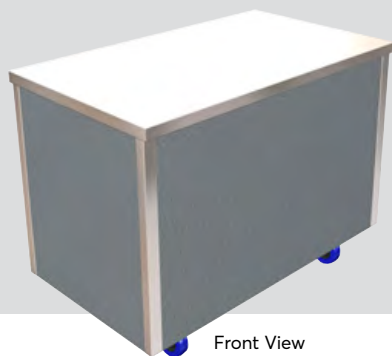
Merlin Grey	Black	Light Grey	White	Buttermilk	Blue	Red	Green	Satin Steel	Oak	Beech	Walnut
NO CODE AS IS STANDARD	GBLAKCHA2	GGREYCHA2	GWHITCHA2	GCREMCHA2	GBLUECHA2	GPREDCHA2	GGRENCHA2	GSSTLCHA2	GOAKCHA2	GBEECCHA2	GWALNCHA2
£0	£0	£0	£0	£0	£0	£0	£0	£0	£128	£128	£128

Colour Options (Wall Sited)

*All units as standard come in Merlin Grey.

Merlin Grey	Black	Light Grey	White	Buttermilk	Blue	Red	Green	Satin Steel	Oak	Beech	Walnut
NO CODE AS IS STANDARD	GBLAKWSA2	GGREYWSA2	GWHITWSA2	GCREMWSA2	GBLUEWSA2	GPREDWSA2	GGRENWSA2	GSSTLWSA2	GOAKWSA2	GBEECWSA2	GWALNWSA2
£0	£0	£0	£0	£0	£0	£0	£0	£0	£128	£128	£128

Ambient Cupboard Plain Top



Front View

The plain top ambient storage cupboard (no gantry) is made in 4 different sizes to suit your servery layout. The standard cupboard features a s/steel plain worktop with a rear cupboard under. Behind the removable rear sliding s/steel cupboard doors, are two tiers of grid shelving for plate/container storage.

Height Options

Base units as standard are 900mm high

JUNIOR HEIGHTS	Option	Dimensions (H mm)	List Price
	G850H	850	£0
	G800H	800	£0

*Extended lead times

When used with a heated or ambient gantry all models supplied with 3m lead & 13amp UK plug 13A | 230V | 50Hz



Rear View

BASE MODEL

Model	Weight (kg)	Dimensions (LxDxH mm)	GN Capacity (1/1)	Total Power (No Gantry)(kW)	List Price
GACP2	60	825 x 700 x 900	2	N/A	£1,222
GACP3	70	1175 x 700 x 900	3	N/A	£1,328
GACP4	82	1525 x 700 x 900	4	N/A	£1,527
GACP5	91	1875 x 700 x 900	5	N/A	£1,713

*All option prices are to be added onto base unit prices for total unit price

Gantry Options



Ambient gantries, s/steel, c/w LED lighting, opaque cover, colour 4000k, reversible single curved glass sneeze screen, self help / ass. serve use, +397(h) above worktop and end glass.

AMBIENT GANTRY

Option	Weight (kg)	Dimensions (LxDxH mm)	GN Capacity (1/1)	Power (kW)	List Price
GAG2	7	825 x 700 x 397	2	0.008	£670
GAG3	9	1175 x 700 x 397	3	0.014	£697
GAG4	12	1525 x 700 x 397	4	0.016	£737
GAG5	16	1875 x 700 x 397	5	0.022	£783



Ambient self help island gantries, s/steel, double curved sneeze screen glass, end glass, c/w LED lighting, opaque cover, colour 4000k, self help use, +397(h) above worktop and end glass.

ISLAND AMBIENT GANTRY

Option	Weight (kg)	Dimensions (LxDxH mm)	GN Capacity (1/1)	Power (kW)	List Price
GAIG2	9	825 x 700 x 397	2	0.008	£823
GAIG3	11	1175 x 700 x 397	3	0.014	£1,076
GAIG4	13	1525 x 700 x 397	4	0.016	£1,268
GAIG5	18	1875 x 700 x 397	5	0.022	£1,414



Ambient assisted service deli gantries, s/steel, full height curved glass front, end glass, ambient glass mid shelf (not chilled), c/w LED lighting, opaque cover, colour 4000k, ass. service use, +540(h) above worktop.

DELI AMBIENT GANTRY

Option	Weight (kg)	Dimensions (LxDxH mm)	GN Capacity (1/1)	Power (kW)	List Price
GADG2	12	825 x 700 x 540	2	0.008	£1,022
GADG3	17	1175 x 700 x 540	3	0.014	£1,115
GADG4	21	1525 x 700 x 540	4	0.016	£1,215
GADG5	26	1875 x 700 x 540	5	0.022	£1,408



Hot gantries, s/steel, reversible single curved glass sneeze screen, self help / ass. serve use, +397(h) above worktop, reinforced worktop for heat, fitted with 200W quartz infra-red jacketed safety lamps.

HOT GANTRY

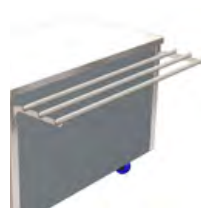
Option	Weight (kg)	Dimensions (LxDxH mm)	GN Capacity (1/1)	Power (kW)	List Price
GHG2PTAC	7	825 x 700 x 397	2	0.4	£724
GHG3PTAC	9	1175 x 700 x 397	3	0.6	£829
GHG4PTAC	12	1525 x 700 x 397	4	0.8	£943
GHG5PTAC	16	1875 x 700 x 397	5	1.0	£1,062

Trayslide Options



SOLID DROP DOWN

Option	Dimensions (LxD mm)	List Price
GSTS2	825 x 302	£147
GSTS3	1175 x 302	£165
GSTS4	1525 x 302	£179
GSTS5	1875 x 302	£193



TUBULAR DROP DOWN

Option	Dimensions (LxD mm)	List Price
GTTS2	825 x 298	£188
GTTS3	1175 x 298	£239
GTTS4	1525 x 298	£272
GTTS5	1875 x 298	£318

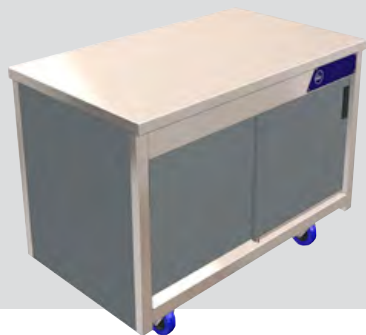
Colour Options *for colour previews & prices refer to next page

*All units as standard come in Merlin Grey.

*Use code below with either 2,3,4 or 5 on the end depending on the size of the unit chosen.

Merlin Grey	Black	Light Grey	White	Buttermilk	Blue	Red	Green	Satin Steel	Oak	Beech	Walnut
NO CODE AS IS STANDARD	GBLAKCHA2-5	GGREYCHA2-5	GWHITCHA2-5	GCREMCHA2-5	GBLUECHA2-5	GPREDCHA2-5	GGRENCHA2-5	GSSTLCHA2-5	GOAKCHA2-5	GBEECCHA2-5	GWALNCHA2-5

Ambient Cupboard Plain Top (Wall Sited)

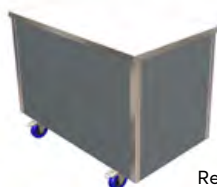


The wall plain top ambient cupboard fits neatly against walls, in alcoves, recesses, or back to back with island units. The plain top ambient storage cupboard (no gantry) is made in 4 different sizes to suit your servery layout. The standard cupboard features a s/steel plain worktop with a rear cupboard under. Behind the removable rear sliding s/steel cupboard doors, are two tiers of grid shelving for plate/container storage.



DOWNLOAD ALL
TECHNICAL DRAWINGS
from www.cedfabsltd.co.uk

*When used with a heated or ambient gantry all models supplied with 3m lead & 13amp UK plug 13A | 230V | 50Hz



Rear View

BASE MODEL

Model	Weight (kg)	Dimensions (LxDxH mm)	GN Capacity (1/1)	Total Power (No Gantry)(kW)	List Price
GWSACP2	60	825 x 700 x 900	2	N/A	£1,222
GWSACP3	70	1175 x 700 x 900	3	N/A	£1,328
GWSACP4	82	1525 x 700 x 900	4	N/A	£1,527
GWSACP5	91	1875 x 700 x 900	5	N/A	£1,713

*All option prices are to be added onto base unit prices for total unit price

Gantry Options



Wall sited ambient gantries, s/steel, c/w LED lighting, opaque cover, colour 4000k, single curved glass sneeze screen, self help use, +397(h) above worktop and end glass.

AMBIENT GANTRY

Option	Weight (kg)	Dimensions (LxDxH mm)	GN Capacity (1/1)	Power (kW)	List Price
GWSAG2	7	825 x 700 x 397	2	0.008	£670
GWSAG3	9	1175 x 700 x 397	3	0.014	£697
GWSAG4	12	1525 x 700 x 397	4	0.016	£737
GWSAG5	16	1875 x 700 x 397	5	0.022	£783



Hot gantries, s/steel, single curved glass sneeze screen, self help use, +397(h) above worktop, reinforced worktop for heat, fitted with 200W quartz infra-red jacketed safety lamps.

HEATED GANTRY

Option	Weight (kg)	Dimensions (LxDxH mm)	GN Capacity (1/1)	Power (kW)	List Price
GWSHG2PTAC	9	825 x 700 x 397	2	0.4	£724
GWSHG3PTAC	11	1175 x 700 x 397	3	0.6	£829
GWSHG4PTAC	13	1525 x 700 x 397	4	0.8	£943
GWSHG5PTAC	18	1875 x 700 x 397	5	1.0	£1,062

Trayslide Options



SOLID
DROP DOWN

Option	Dimensions (LxD mm)	List Price
GSTS2	825 x 302	£147
GSTS3	1175 x 302	£165
GSTS4	1525 x 302	£179
GSTS5	1875 x 302	£193



TUBULAR
DROP DOWN

Option	Dimensions (LxD mm)	List Price
GTTS2	825 x 298	£188
GTTS3	1175 x 298	£239
GTTS4	1525 x 298	£272
GTTS5	1875 x 298	£318

*Extended lead times

Height Options

Base units as standard are 900mm high

JUNIOR HEIGHTS	Option	Dimensions (H mm)	List Price
	G850H	850	£0
	G800H	800	£0



Colour Options

*All units as standard come in Merlin Grey.

*Use code below with either 2,3,4 or 5 on the end depending on the size of the unit chosen.

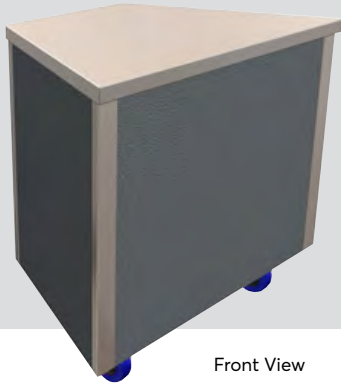


Merlin Grey Black Light Grey White Buttermilk Blue Red Green Satin Steel Oak Beech Walnut

NO CODE AS IS STANDARD GBLAKWSA2-5 GGREYWSA2-5 GWHITWSA2-5 GCREMWSA2-5 GBLUEWSA2-5 GPREDWSA2-5 GGRENWSA2-5 GSSTLWSA2-5 GOAKWSA2-5 GBEECWSA2-5 GWALNWSA2-5

£0 £0 £0 £0 £0 £0 £0 £0 £0 £128 £128 £128

45° & 90° Corner Infill Units



Front View

The fully clad 45° or 90° corner infill units have lockable castors & can be combined with other dining carts to change the direction of the servery run, whilst continuing the worktop flow. They are finished on all four sides to create internal or external angles (45°/90°) between other carts.

Height Options

Base units as standard are 900mm high

JUNIOR HEIGHTS	Option	Dimensions (H mm)	List Price
	G850H	850	£0
	G800H	800	£0

*Extended lead times



Front View



Rear View

45° INFILL BASE UNIT

45°

Weight (kg)

Dimensions (LxDxH mm)

Total Power (kW)

List Price

GC45

62

1036 x 647 x 900

N/A

£857



Front View



Rear View

90° INFILL BASE UNIT

90°

Weight (kg)

Dimensions (LxDxH mm)

Total Power (kW)

List Price

GC90

77

1509 x 495 x 900

N/A

£857

*All option prices are to be added onto base unit prices for total unit price

Trayslide Options



45° SOLID DROP DOWN

Option

Dimensions (LxD mm)

List Price

GSTS45

1035 x 302

£165



45° TUBULAR DROP DOWN

Option

Dimensions (LxD mm)

List Price

GTTS45

1035 x 298

£239



90° SOLID DROP DOWN

Option

Dimensions (LxD mm)

List Price

GSTS90

1509 x 302

£179



90° TUBULAR DROP DOWN

Option

Dimensions (LxD mm)

List Price

GTTS90

1509 x 298

£272

45° Colour Options

*All units as standard come in Merlin Grey.

Merlin Grey	Black	Light Grey	White	Buttermilk	Blue	Red	Green	Satin Steel	Oak	Walnut	Beech
NO CODE AS IS STANDARD	GBLAKCHA45	GGREYCHA45	GWHITCHA45	GCREMCHA45	GBLUECHA45	GPREDCHA45	GGRENCHA45	GSSTLCHA45	GOAKCHA45	GWALNCHA45	GBEECCHA45
£0	£0	£0	£0	£0	£0	£0	£0	£0	£128	£128	£128

90° Colour Options

*All units as standard come in Merlin Grey.

Merlin Grey	Black	Light Grey	White	Buttermilk	Blue	Red	Green	Satin Steel	Oak	Beech	Walnut
NO CODE AS IS STANDARD	GBLAKCHA90	GGREYCHA90	GWHITCHA90	GCREMCHA90	GBLUECHA90	GPREDCHA90	GGRENCHA90	GSSTLCHA90	GOAKCHA90	GBEECCHA90	GWALNCHA90
£0	£0	£0	£0	£0	£0	£0	£0	£0	£128	£128	£128

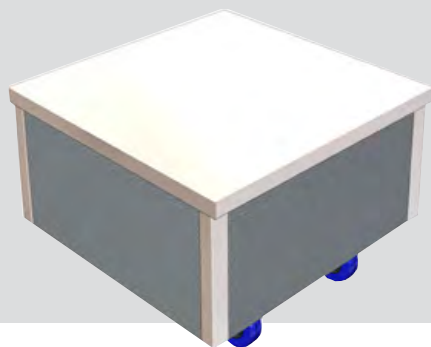
Low Height Tray Pick Up



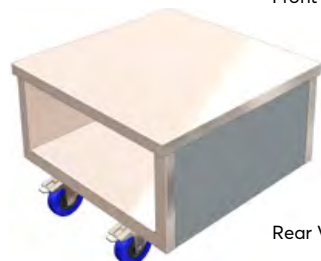
The ambient low height tray pick up also doubles up as a soup kettle stand if required & has a plain s/steel worktop. It is ideal for use as a freestanding collection point at the entrance to the dining hall or inbetween other glide units on a counter run. The model has an open rear and a base shelf for storing extra trays in.



DOWNLOAD ALL
TECHNICAL DRAWINGS
from www.cedfabsltd.co.uk



Front View



Rear View

LEFT HAND
BASE MODEL

Model	Weight (kg)	Dimensions (LxDxH mm)	Rear Storage (WxH mm)	Total Power (kW)	List Price
GTP1	26	700 x 700 x 500	605 x 263	N/A	£678

*All option prices are to be added onto base unit prices for total unit price

Colour Options *previews of colours at bottom of page

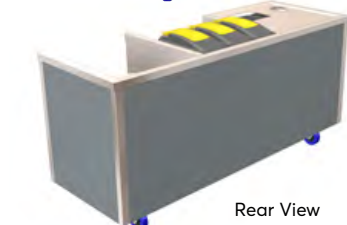
*All units as standard come in Merlin Grey.

Merlin Grey	Black	Light Grey	White	Buttermilk	Blue	Red	Green	Satin Steel	Oak	Beech	Walnut
NO CODE AS IS STANDARD	GBLAKGTP1	GGREYGTP1	GWHITGTP1	GCREMGTP1	GBLUEGTP1	GPREDGTP1	GGRENGTP1	GSSTLGTP1	GOAKGTP1	GBEECGTP1	GWALNGTP1
£0	£0	£0	£0	£0	£0	£0	£0	£0	£128	£128	£128

Waste Clearing Trolley



Front View



Rear View

BASE MODEL

The waste clearing trolley is made in a 5-1GN size. It can be used as a freestanding or wall sited unit that matches the rest of the servery units. The welded worktop area (L hand end) has anti drip mould for food & liquid waste scrapping, with a lift out s/steel worktop funnel for pouring waste liquid through. A 520mm wide 2 tier section for plate returns (R hand end) will also accept dishwash baskets & basket or tray storage underneath. The unit comes with 5no removable bins for liquid (25L) + food waste (50L), paper, cans & cutlery (all 25L) with bin indentifications vinyl labels to each.



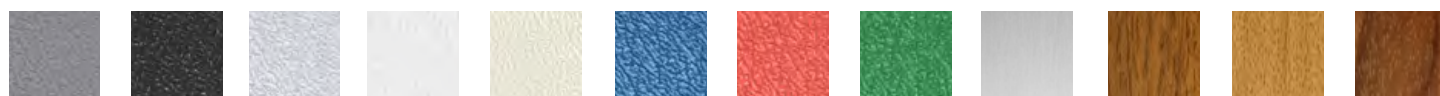
FOR HEIGHT OPTIONS REFER TO PREVIOUS PAGE

Model	Weight (kg)	Dimensions (LxDxH mm)	GN Capacity (1/1)	Total Power (kW)	List Price
GWT	68	1875 x 675 x 900	5	N/A	£1,939

*All option prices are to be added onto base unit prices for total unit price

Colour Options

*All units as standard come in Merlin Grey.



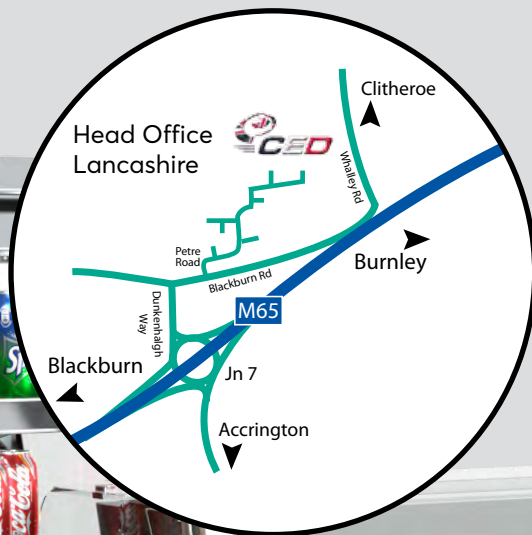
Merlin Grey	Black	Light Grey	White	Buttermilk	Blue	Red	Green	Satin Steel	Oak	Beech	Walnut
NO CODE AS IS STANDARD	GBLAKCHA5	GGREYCHA5	GWHITCHA5	GCREMCHA5	GBLUECHA5	GPREDCHA5	GGRENCHA5	GSSTLCHA5	GOAKCHA5	GBEECCA5	GWALNCHA5
£0	£0	£0	£0	£0	£0	£0	£0	£0	£128	£128	£128





DOWNLOAD ALL
TECHNICAL DRAWINGS
from www.cedfabsltd.co.uk





CED Fabrications Limited
Units A1-A4, Falcon Court
Clayton Business Park
Clayton-le-Moors,
Hyndburn, Lancashire
BB5 5JD

T: 01254 238 282
F: 01254 238 228



CED Fabrications Ltd,
Units 4 & 5,
Nexus Industrial Estate,
Randles Road, , Knowsley
Prescot, Merseyside
L34 9HX

T: 0151 545 2840



CED Fabrications Ltd
Building 3
Sandwich Industrial Estate
Sandwich, Kent
CT13 9LY

T: 01304 617 377



Certificate Number 7895
ISO 9001, ISO 14001



DOWNLOAD ALL
TECHNICAL DRAWINGS
from www.cedfabsltd.co.uk

SALES LINE
01254 238 282

All prices exclude VAT - Free
delivery applies to all orders over
£350. All orders under £350 incur
a £40 charge. Deliveries to UK
mainland ONLY.

Distributor stamp

w: www.cedfabsltd.co.uk
e: sales@cedlimited.com