



## TOURNUS PRICE LIST 2022

SHELVING · HOT & COLD CABINETS · TROLLEYS · STAINLESS STEEL UNITS

# CED & Tournus together better

Our recent merger with French catering equipment manufacturer Tournus, now enable CED to extensively increase our product range like never before, introducing many innovative quality products – all with short lead times and delivered direct to site, with other equipment currently supplied by CED.

The new partnership brings with it, more than 100 years' experience in commercial catering equipment design & manufacturing, supplied worldwide from our state of the art production facility in the Burgundy region of France.

CED & Tournus will continue to invent, invest and give our customers competitive quality catering solutions, for many years to come.

Howard Rishton  
Managing Director



# CONTENTS

## Roll'Service

Hot holding banquet trolley with humidification control .....	p 8
Hot holding banquet trolley without humidification control .....	p 9

## Trolleys

Serving trolleys.....	p 12
Plate lowerators.....	p 14
Glasses or tray dispenser trolleys .....	p 15
Self-service trolleys.....	p 16
Plate storage & dispenser trolleys.....	p 18
Rack and tray dolleys .....	p 20
GN Container storage trolleys .....	p 21
Euronorm container / crate / tray trolleys .....	p 23
Ustensils & bakery equipment storage trolleys.....	p 24
Kitchen stoarge and preparation trolleys .....	p 26
Transport trolleys .....	p 27
Laboratory trolleys .....	p 27

## Shelving

Racking with removables shelves.....	p 32
Racking with solid shelves.....	p 36
Pallets.....	p 38

## Hygiene

TS 2000N hand wash basins.....	p 42
G.A. wash hand bowls.....	p 44
G.C. wash hand basins .....	p 44
Mobile wash hand basins .....	p 45
Janitor sink stations .....	p 45
Sterilizing cabinets.....	p 47
Insect-killers .....	p 48
Waste bag holders & bins .....	p 50

## Floor drains - Floor siphons

Floor siphons .....	p 54
Floor drains with vertical outlet.....	p 57
Floor drains with horizontal outlet .....	p 60

## Others products

Bread making units.....	p 64
Wall shelves .....	p 65
Catering high cupboard .....	p 66





# Proof of commitment

## An industrial experience

- Company created in 1910
- Factory with a sheltered surface area of **22 000 m<sup>2</sup>**
- **3000 tons** of metal processed every year
- **5500 quotations** for complete installations per year
- 2 fully automated bender lines
- Workshops dedicated to special products
- 100 000 packages shipped every year



## NF-Food hygiene

The NF Food Hygiene certification stems from a voluntary initiative by manufacturers. This standard applies to equipment intended for mass catering and bakery-confectionery refrigerated equipment. This is an acknowledgement of the quality of the products, certified by AFNOR, a specialised body.

**It therefore contributes to the prevention of foodborne diseases and facilitates the setting up of an HACCP system with the emphasis on end user food safety.**



## NSF Mark

NSF International is an independent certification body committed to public health, safety and environmental protection. The NSF mark certifies that this product has been recognised as complying with the international food industry standards. Manufacturers undergo strict assessment, products are tested and factories spot-checked.



## CE Marking

The CE marking materialises the compliance of products with the requirements laid down to manufacturers by the European Union. It entitles products to free movement throughout the European Union and the right to be used therein.



## Tournus Equipement is a member of FCSI

Foodservice Consultants Society International (FCSI) is the respected, professional organization of men and women who offer design and management consulting services in the food service and the hospitality industry, around the world.



## Tournus Equipement is a member of CESA

The Catering equipment Supplier's Association (CESA) represents over 170 members who manufacture, distribute, service and maintain all types of commercial catering equipment from utensils to full kitchen schemes. These companies are backed by the CESA code of practice, which ensure buyers get the best equipment, advice, service and products for their needs. CESA also operates the Certified Foodservice Professionnel (CFSP) training programme to recognise and build the knowledge of individuals in the foodservice and catering equipment.

Members shall ensure that the products they offer for sale within the EU, will be CE Marked as required to confirm they comply with relevant European Directives.



## WRAS

The purpose of WRAS is to contribute to the protection of public health by preventing contamination of public water supplies and encouraging the efficient use of water by promoting and facilitating compliance with the Water Supply (Water Fittings) Regulations and Byelaws in Scotland. All our hand wash basin have the WRAS approval.

WRAS is a subscription membership company limited by guarantee and was incorporated on 4 August 2008. The subscribers of WRAS are the 26 UK Water Suppliers.





# Your interactive kitchen



You are in a restaurant kitchen,  
you want to find out information  
for product maintenance,  
you want to order a spare part,  
you want to be sure about the origin  
of the equipment.

**By scanning the label with your smartphone, you can have immediate access to the right information.**

## How does it work ?

- Download the application on your smartphone
- Scan the QR code with your phone
- Select the language used (French, English or German)
- Select the documents you require
- You have access to all the information in less than a minute

## The QR Code will provide you with...

- The product code and its description
- The production date and serial number of the product
- The name of the operator who manufactured it
- The technical manual of the product
- The list of components for after-sales service
- Advice for maintaining the product
- Information about recycling at the end of service life



# ROLL'SERVICE

HEATED TEMPERATURE HOLDING BANQUET TROLLEY

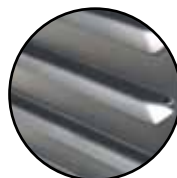


**Easy loading:**

270° door opening.

**Door stay system:**

easier loading



**Hygienic:**

curved surfaces and press-drawn sliders. Space between sliders: 71 mm.



**Optimum temperature distribution:**

centrifugal fan.



**Easy operation:**

removable, 2 litre condensate tank, front access. 24-hour operation.



**Easy access to functions and settings:**

temperature control (range from 60°C to 85°C), humidity control (35 % to 50 %), **IP 25**.



**2 Side handles** and one bar at rear for easy handling.



**Ergonomic:**

exclusive modern, oversized handle.



**Maintenance:**

easy access to technical parts.



**Easy handling:**

4 swivel wheels, 2 with brake.

**Non-marking shockproof surround:**

protection of the cabinet and its surroundings.

**Compact: small footprint**

- 1/1 GN: 528 x 821 mm
- 2/1 GN: 733 x 941 mm



Scan here for documentation

\* Condensate drip system not available for 5 level model







# ROLL'SERVICE

## HEATED TEMPERATURE HOLDING BANQUET TROLLEY

**Heated temperature holding banquet trolley.** Made of food quality stainless steel with rock wool insulated walls and door. Electronic control thermostat with digital display. Inside entirely radiused, with press-draw sliders and base. Space between sliders: 71 mm. Stainless steel or glazed door, with removable seal (opens 270°). Carrying handles on sides and rear guide bar.

Non-marking, shock-proof surround (5-level model fitted with corner bumpers). 4 braked wheels, 2 braked, Ø 160 mm stainless steel cover on 20 level 2/1 GN models, Ø 125 mm polyamide cover on 10 and 15 level 2/1 GN models, 10,15 and 20 level 1/1GN models, and Ø 80 mm wheels with stainless steel cover on 5 level models. Index of protection IP25, for low pressure cleaning. NF-Hygiene Certified.

**Electric heating system:** heating provided by a centrifugal fan to the rear, with external motor which circulates air through sealed stainless steel heating elements. Stainless steel internal air deflection system. Regulated temperature at 85°C. The electronic regulation thermostat with digital display allows a regulation from 60 to 85°C. Features a fast rise in temperature feature, from 20 to 85°C in 25 minutes. Supplied with spiral cable and moulded plug for electrical connection, Voltage 230V, rate 50/60 Hz.

- **Condensate drip system** (except for the 5 level Roll'Service).
- **Door stay system:** easier loading thanks to the new door stay system in open position.

## ROLL'SERVICE - WITH HUMIDIFICATION CONTROL

The electronic control allows selection of 5 rates of hygrometry. Removable rotomoulded tank accessible from the front, with 2 litre capacity, allowing 24 hour operation.



507 356



507 357

### Roll'Service 1/1 GN

ROLL'Service	Electrical consumption (kwh) (1)	Input power (kW) (2)	Capacity (litres)	Overall dim. l x W x h (mm)	Reference	Price
10 levels with s/steel door	0,29	0,825	146	528 x 821 x 1134	507336AS	£5,800
15 levels with s/steel door	0,30	1,215	215	528 x 821 x 1489	507356AS	£6,277
15 levels with glass door	0,30	1,215	215	528 x 821 x 1489	507357AS	£6,863
20 levels with s/steel door	0,575	1,215	284	528 x 821 x 1844	507386AS	£6,766
20 levels with glass door	0,575	1,215	284	528 x 821 x 1844	507387AS	£7,192



507 457



507 486

### Roll'Service 2/1 GN

ROLL'Service	Electrical consumption (kwh) (1)	Input power (kW) (2)	Capacity (litres)	Overall dim. l x W x h (mm)	Reference	Price
10 levels with s/steel door	0,410	1,215	285	733 x 941 x 1134	507436AS	£6,627
15 levels with s/steel door	0,405	1,215	420	733 x 941 x 1489	507456AS	£7,199
15 levels with glass door	0,405	1,215	420	733 x 940 x 1489	507457AS	£7,797
20 levels with s/steel door	0,785	2,015	555	733 x 941 x 1880	507486AS	£8,027
20 levels with glass door	0,785	2,015	555	733 x 941 x 1880	507487AS	£8,390

(1) average electrical power consumption per service (as per NF 040 016 for a 3h30 cycle)

(2) maximum start up power required.

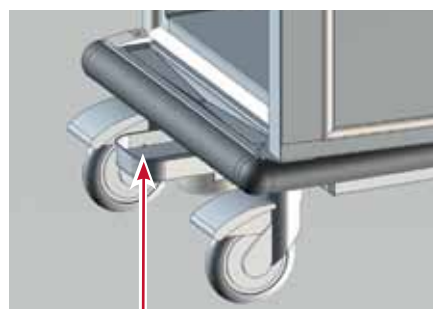


# ROLL'SERVICE - WITHOUT HUMIDIFICATION

**Condensate drip system**  
\* not available for 5 level model



Embossed chute



Removable and retractable condensate drip system

## Roll'Service 1/1 GN

ROLL'Service	Electrical consumption (kwh) (1)	Input power (kW) (2)	Capacity (litres)	Overall dim. l x W x h (mm)	Reference	Price
5 levels with s/steel door	0,22	0,825	77	524 x 817 x 708	507301AS	<b>£4,605</b>
10 levels with s/steel door	0,29	0,825	146	528 x 821 x 1134	507331AS	<b>£5,307</b>
15 levels with s/steel door	0,30	1,215	215	528 x 821 x 1489	507351AS	<b>£5,776</b>
15 levels with glass door	0,30	1,215	215	528 x 821 x 1489	507352AS	<b>£6,420</b>
20 levels with s/steel door	0,575	1,215	284	528 x 821 x 1844	507381AS	<b>£6,297</b>
20 levels with glass door	0,575	1,215	284	528 x 821 x 1844	507382AS	<b>£6,719</b>

## Roll'Service 2/1 GN

ROLL'Service	Electrical consumption (kwh) (1)	Input power (kW) (2)	Capacity (litres)	Overall dim. l x W x h (mm)	Reference	Price
10 levels with s/steel door	0,410	1,215	285	733 x 941 x 1134	507431AS	<b>£6,129</b>
15 levels with s/steel door	0,405	1,215	420	733 x 941 x 1489	507451AS	<b>£6,719</b>
15 levels with glass door	0,405	1,215	420	733 x 941 x 1489	507452AS	<b>£7,294</b>
20 levels with s/steel door	0,785	2,015	555	733 x 941 x 1880	507481AS	<b>£7,481</b>
20 levels with glass door	0,785	2,015	555	733 x 941 x 1880	507482AS	<b>£7,921</b>

(1) average electrical power consumption per service (as per NF 040 016 for a 3h30 cycle)

(2) maximum start up power required.

## Options

Description	Reference	Price
Extra-cost for lock and key	701 961	<b>£113</b>
Extra-cost for reverse opening door*	701 963	<b>£315</b>
Extra-cost for 4 swivel stainless steel wheels Ø 125 mm including 2 brakes to replace wheels with polyamid cover	702 190	<b>£177</b>

\* special manufacture, not from stock, no longer allows the key lock.



507 481

507 452



507 431



507 301



**Option:**  
Lock and key.

# TROLLEYS



## Serving trolleys

- **Safe transport:**  
press-drawn trays 10 mm deep for optimum holding of containers.
- **Comfort:**  
sound-proofed trays.
- **Sturdiness:** welded assembly over the whole tray height with flattened edges in lower part.

## Plate trolley

Raised platform

- **Sturdiness:**  
Bent square (25 x 25) tube and bent sheet metal with flattened edges. Stainless steel structure.
- **Ergonomical:**  
platform height: 460 mm (200 plates) and 485 mm (400 plates).



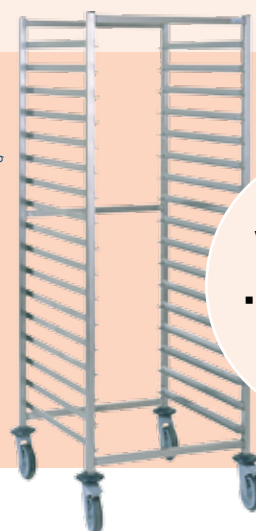
Quick heating  
time and  
evenly distributed  
temperature.

## Heated trolleys

- **Easy use:**  
no tools required to adjust plate diameter (up to 320 mm).
- **Quality of steering**  
silent, easy sliding, reliability
- **Easy cleaning:**  
removable heated sections for deep cleaning.

## GN racking trolleys

- **Strength:**  
load 250 kg per trolley
- **Sturdiness:**  
continuous welded sliders over the whole height.
- **Optimum accessibility**  
longitudinal reinforcement bar not necessary at the front.
- **Swivel wheels**  
Ø 125 mm with non-marking tyre, soundless.



**Wheels  
with polyamide  
Ø 125 mm:**

- Noiseless wheels
- Less inertia on starting



Scan here for  
documentation





TOURNUS  
EQUIPEMENT



ENERGIE  
A++



MADE IN FRANCE



# SERVING TROLLEYS



801 542

Stainless steel welded construction. Stainless steel trays with rounded edges, sound-proofed trays. Arched handles: tube Ø 25 mm. 4 swivel wheels Ø 125 mm with polyamide cover including 2 brakes, with annular bumpers. Non-marking rubber tyres. Max load: 50 kg by level. Hygiene certified.

## Serving trolleys with 2 arched handles

Serving trolleys with 2 arched handles	Overall Dim. l x W x h (mm)	Space between trays	Ref.	Price
2 trays 800 x 530 mm	895 x 625 x 960	560	<u>801 542</u>	<b>£347</b>
3 trays 800 x 530 mm	895 x 625 x 960	260	<u>801 543</u>	<b>£427</b>
4 trays 800 x 530 mm	895 x 625 x 1260	260	801 544	<b>£603</b>
2 trays 1000 x 600 mm	1095 x 695 x 960	560	<u>801 552</u>	<b>£416</b>
3 trays 1000 x 600 mm	1095 x 695 x 960	260	<u>801 553</u>	<b>£535</b>
4 trays 1000 x 600 mm	1095 x 695 x 1260	260	801 554	<b>£740</b>

### THE TOURNUS ASSETS

- Press-drawn trays with peripheral surround of 10 mm.
- Tray width of 530 mm for efficient holding of a GN container and optimum safety of use.

## Serving trolleys with 1 arched handle

Serving trolleys with 1 arched handles:	Overall Dim. l x W x h (mm)	Space between trays	Ref.	Price
2 trays 800 x 530 mm	895 x 625 x 960	560	801 602	<b>£368</b>
3 trays 800 x 530 mm	895 x 625 x 960	260	801 603	<b>£446</b>
2 trays 1000 x 600 mm	1095 x 695 x 960	560	801 612	<b>£439</b>
3 trays 1000 x 600 mm	1095 x 695 x 960	260	801 613	<b>£551</b>



801 543



801 603







801 547

## Serving trolleys with 2 arched handles and gallery rails

Gallery rails height 50 mm in stainless steel wire Ø 8 mm, around all 4 sides for each level.

Serving trolleys with 2 arched handles	Overall Dim. l x W x h (mm)	Space between trays	Ref.	Price
2 trays 800 x 530 mm with gallery rails	895 x 625 x 960	560	801 546	<b>£518</b>
3 trays 800 x 530 mm with gallery rails	895 x 625 x 960	260	801 547	<b>£651</b>
2 trays 1000 x 600 mm with gallery rails	1095 x 695 x 960	560	801 556	<b>£611</b>
3 trays 1000 x 600 mm with gallery rails	1095 x 695 x 960	260	801 557	<b>£779</b>

## Accessories

Description	Overall dim. l x W x h (mm)	Reference	Price
Hook-on cutlery pan 1/3 GN	325 x 176 x 200	801 395	<b>£88</b>
Hook-on waste pan	420 x 200 x 250	801 537	<b>£152</b>
Hook-on dustbin bag support 70 litres	360 x 355 x 810	801 538	<b>£167</b>
Trolley covers 895 x 625 mm		229 603	<b>£210</b>
Trolley covers 1095 x 695 mm		229 604	<b>£199</b>



229 603

## Options

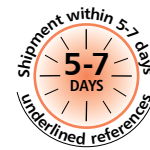
Description	Reference	Price
Extra cost for serving trolleys with stainless steel wheels	702 180	<b>£203</b>







# PLATE LOWERATORS



Stainless steel construction. Rounded inside angles for easy cleaning. Stainless steel steering handle, stainless steel tube Ø 25 mm. 4 moulded polyethylene protective bumpers. 4 swivel wheels Ø 125 mm with polyamide cover including 2 brakes. Removable constant level dispensers, stack height 580 mm, approximately 60 plates Ø 180 to 290 mm.

## Mobile heated plate lowerators

Powered by on/off switch with lamp. Static heating controlled by mechanical thermostat adjustable from 0°C to 90°C. Heated by 2 stainless steel shielded elements located on the sides. Rock wool insulation. Power rating 800 W (1 stack) and 1500 W (2 stacks), voltage 230 V. Trolleys delivered with transparent polycarbonate lids.

Heated plate trolleys	Overall Dim. l x W x h (mm)	Reference	Price
Heated single plate stack type with lids (for plate diam. 180-290 mm).	530 x 485 x 900	<u>808171UK</u>	<b>£1,457</b>
Heated twin plate stack type with lids (for plate diam. 180-290 mm).	960 x 485 x 900	<u>808172UK</u>	<b>£2,073</b>
Heated twin plate stack type with lids (for plate diam. 215-320 mm).	990 x 520 x 900	808177UK	<b>£3,085</b>



## Mobile ambient plate lowerators

Option: lids.

Description	Overall Dim. l x W x h (mm)	Reference	Price
Ambient single plate stack type without lid (for plate diam. 180-290 mm).	530 x 485 x 900	808 181	<b>£1,313</b>
Ambient twin plate stack type without lids (for plate diam. 180-290 mm).	960 x 485 x 900	808 182	<b>£1,742</b>

## Mobile universal plate lowerators

Trolleys with rectangular platform for all types of dishes (bowls, saucers, oval or rectangular plates). Heated unit c/w stainless steel lid. Ambient unit is not supplied with lid but is optional.

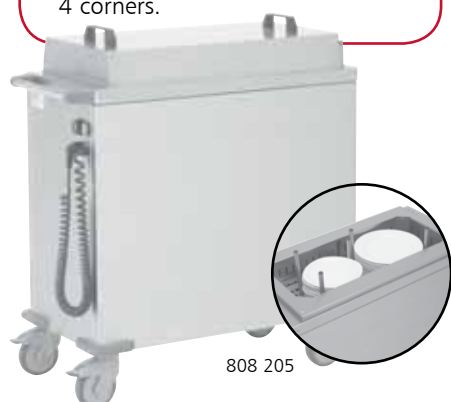
Description	Overall Dim. l x W x h (mm)	Reference	Price
Ambient universal trolley (open top)	960 x 485 x 900	808 201	<b>£2,628</b>
Heated universal trolley (with lid)	960 x 485 x 900	808205UK	<b>£2,831</b>

## Accessories

Description	Overall dim. l x W (mm)	Reference	Price
Transparent polycarbonate lid for ambient single stack lowerator	Ø 375	230 079	<b>£36</b>
Stainless steel lid for ambient universal trolley	750 x 415	119 268	<b>£216</b>



- **Plate holding trays** guided by easy, noiseless rollers.
- **Handling level easily adjusted** by adding or removing springs without using tools.
- **Protection:** bumpers made of non-marking composite material in the 4 corners.





# GLASSES OR TRAY DISPENSER TROLLEYS

Stainless steel construction. Platform thickness 1,2 mm. Mobile platform guided by 4 guide rolls. 4 swivel wheels Ø 125 mm with polyamide cover including 2 brakes. Moulded polyethylene protective buffers.



Extra cost : 808 107  
(pans GN1/3 not supplied)



Description	Overall Dim. l x W x h (mm)	Reference	Price
<b>Self-levelling glass dispenser trolley</b> with draining pan (GN1/2 polyethylene, depth. 100 mm) under platform 510 x 510 mm with diamond point base, capacity : 6 baskets, height 115 mm or 10 baskets, height 75 mm.	817 x 545 x 930	808 102	£1,035
<b>Self-levelling glass dispenser trolley</b> with draining pan (GN1/2 polyethylene, depth. 100 mm) <b>under platform 510 x 510 mm with diamond point base</b> , capacity : 6 baskets, height 115 mm or 10 baskets, height 75 mm.	817 x 545 x 930	808 100	£1,262
<b>Self-levelling glass dispenser trolley</b> stainless steel surround cover, capacity : 6 baskets 530 x 530 mm, height 115 mm or 10 baskets,height 75 mm	835 x 645 x 1040	808 103	£2,025
<b>Self-levelling tray dispenser trolley</b> platform 540 x 380 mm, capacity: 140 trays	817 x 545 x 930	808 105	£1,028
<b>Self-levelling tray dispenser trolley</b> stainless steel surround and cover capacity: 140 trays 560 x 400 mm	705 x 675 x 1040	808 108	£1,790
<b>Self-levelling tray dispenser trolley</b> with lateral guide, capacity: 140 trays 540 x 380 mm	817 x 545 x 930	808 106	£1,064
<b>Self-levelling trolley for ABS plastic tray</b> capacity: 140 trays 610 x 410 mm	860 x 545 x 930	808 109	£1,043

## Options

Description	Reference	Price
Extra-cost for cutlery dispenser fitted to self-levelling tray dispenser trolley	808 107	£143
Extra-cost for 4 stainless steel wheels in lieu of polyamide type wheel (plates, glasses and trays)	702 190	£177
Polyamide cover 870 x 540 x 800 mm for glasses or tray dispenser trolleys	221 233	£181
Polyamide cover 920 x 570 x 1070 mm for cutlery dispenser trolleys	221 232	£272

## Drop in dispensers with removable insert

Drop in dispenser capacities: **ambient or heated plate lowerator**: up to 60 plates, 180-290 mm diameter. **Glasses dispenser**, 6 baskets height 115 mm or 10 baskets height 75 mm. **Tray dispenser**: up to 140 trays. Heated lowerator provided with lid & remote control mounting switch.



Description	Overall Dim. l x W x h (mm)	Reference	Price
Ambient single plate stack drop in lowerator without lid (for plate diam. 180 - 290 mm)	Ø 380 x h. 740	<u>808 231</u>	£375
Heated single plate stack drop in lowerator with lid (for plate diam. 180 -290 mm)	Ø 380 x h. 740	<u>808 235</u>	£1,300
Drop in glasses dispenser	690 x 710 x 715	808 236	£1,990
Drop in tray dispenser (for up to 460 x 360 mm tray)	580 x 660 x 715	808 237	£1,869



# SELF-SERVICE TROLLEYS

Stainless steel construction. Frame in 25 x 25 mm stainless steel tube. Longitudinal reinforcing bars in 50 x 25 mm stainless steel tube. Wire type tray runner panels in 4.8mm diameter s/steel, welded to frame. With or without beige laminate side modesty panels thickness 2 mm fixed by clips. 4 swivel wheels Ø 125 mm with polyamide cover including 2 braked. Annular bumpers.



800 072

## 6 tier (tray entry width ways)

Trolley with entry side by side. Capacity: 12 or 18 trays depending on the models.  
Space between tiers: 125 mm.



Description	Overall Dim. l x W x h (mm)	Width of trays (mm)	trolleys without panels		trolleys with panels	
			ref	price	ref	price
Trolley 2 x 6 tiers	930 x 630 x 1030	320 - 370	800 071	<b>£825</b>	800 072	<b>£970</b>
Trolley 2 x 6 tiers with upper shelf	930 x 630 x 1040	320 - 370	800 073	<b>£976</b>	800 074	<b>£1,123</b>
Trolley 3 x 6 tiers with upper shelf	1340 x 630 x 1040	320 - 370	800 075	<b>£1,258</b>	800 076	<b>£1,408</b>



800 075

## 12 tier (tray entry width ways)

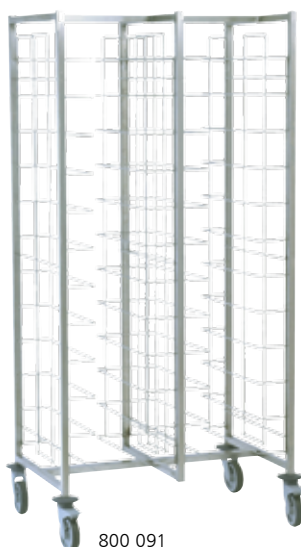
Capacity: 12 or 24 trays depending on the models. Entry side by side (trolley 2 x 12 tiers).  
Space between tiers: 125 mm



Description	Overall Dim. l x W x h (mm)	Width of trays (mm)	Trolleys without panels		Trolleys with panels	
			ref	price	ref	price
Trolley 1 x 12 tiers	510 x 630 x 1790	320 - 370	800 081	<b>£620</b>	800 082	<b>£811</b>
Trolley 2 x 12 tiers	930 x 630 x 1790	320 - 370	800 091	<b>£1,067</b>	800 092	<b>£1,262</b>



**Anti-fall clips  
for trays  
on each tier**



800 091



800 092







800 096

## 12 tier (tray entry length ways)

Capacity: 24 trays, entry back to back.

Space between tiers: 125 mm..

Description	Overall Dim. l x W x h (mm)	Length of trays (mm)	Trolleys without panels		Trolleys with panels	
			Ref	Price	Ref	Price
Trolley 2 x 12 tiers	620 x 790 x 1790	400 - 480	<u>800 093</u>	<b>£722</b>	800 094	<b>£1,017</b>
Trolley 2 x 12 tiers	700 x 790 x 1790	480 - 560	<u>800 095</u>	<b>£726</b>	800 096	<b>£1,021</b>

Extra cost for self-service trolleys with 4 stainless steel wheels - Ref: 702 180 - Price: **£204**



## CHOOSE THE MODESTY PANEL COLOUR

The standard side modesty panels of the self-service trolleys are made of 2 mm thick compact beige laminate. You can personalise the cladding of the 2 outsides of your trolleys in one of the colours below (minimum order of 3 trolleys):

- Ref. 702 097, personalised cladding for trolley with 6 tiers, extra charge per trolley: **£228**
- Ref. 702 098, personalised cladding for trolley with 12 tiers with insertion widthways, extra charge per trolley: **£453**
- Ref. 702 099, personalised cladding for trolley with 12 tiers with insertion lengthways, extra charge per trolley: **£683**

Personalisation is done by bonding a resistive film (cleaning resistant). We offer a choice of 20 colours covering cladding (swatch on request).

### Standard colours to match the cladding of dispensing units

Delft blue	Red cherry	Yellow sunflower	Yellow lemon	Green apple	Orange	Fuchsia
Violine	Black	Light concrete grey	Chicago dark concrete grey	Brushed aluminum	Premium white	Alpine white
American mapple champagne	Natural bardolino oak	Kendal oak oil	Shorewood	Brown Fleetwood	Walnut of pacific tobacco	

Trolleys can also be personalised with your logo or that of your customers: please make enquiries with us.



# PLATE STORAGE & DISPENSER TROLLEYS

Stainless steel welded construction. Arched handles in tube 25 x 25 mm with adjustable separations. 4 swivel wheels Ø 125 mm with polyamide cover including 2 brakes. Annular bumpers. Plates up to Ø 290 mm maximum.



- Openwork, sloped base to facilitate draining of cleaning water.
- Adjustable plate separation grids to fit the type of dishes used.
- For trolleys with fold-away grids, the front grid can be hooked on to the rear frame for easy access when loading and unloading.

## Plate trolleys

Description	Overall Dim. l x W x h (mm)	Secure stacking partitions		Removable front grid & separation grids	
		ref	price	ref	price
Trolley 200 plates	1065 x 450 x 810	<u>800 541</u>	<b>£503</b>	800 542	<b>£570</b>
Trolley 300 plates	1065 x 450 x 1000	<u>800 546</u>	<b>£578</b>	800 547	<b>£712</b>
Trolley 400 plates	1065 x 740 x 810	800 551	<b>£686</b>	800 552	<b>£705</b>

## Plate trolleys - delivered as flat pack item

Description	Overall Dim. l x W x h (mm)	Reference	Price
trolley 200 plates with secure stacking partition	1065 x 450 x 810	800 561	<b>£623</b>
trolley 300 plates with secure stacking partition	1065 x 450 x 1000	800 566	<b>£708</b>



800 541

## Raised platform plate trolleys

Raised platform, for a more ergonomic use: height 460 mm for trolley 200 plates and 485 mm for trolley 400 plates.

Description	Overall Dim. l x W x h (mm)	Secure stacking partitions		Removable front grid & separation grids	
		Ref	Price	Ref	Price
Trolley 200 plates	1065 x 450 x 1000	800 575	<b>£518</b>	800 578	<b>£591</b>
Trolley 400 plates	1065 x 740 x 1000	800 576	<b>£806</b>	800 579	<b>£825</b>



800 542

## 2 tier plate (or tray) trolleys

Trolley with 2 tiers allowing more storage and more comfortable use. Welded construction, slightly sloping platforms for a good stability of stored products.

Description	Overall Dim. l x W x h (mm)	Reference	Price
2 tier trolley (shelf heights 350 & 785 mm)	930 x 670 x 1160	800 585	<b>£860</b>
2 tier trolley (shelf heights 600 & 1000 mm)	930 x 670 x 1410	800 586	<b>£1,028</b>



800 575



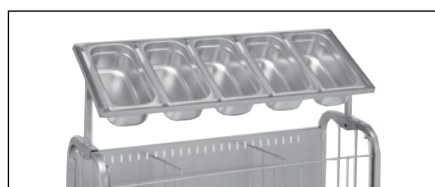
800 585



## Plate trolley options



228 197



Over head cutlery dispenser (capacity 5 pans GN 1/3, containers not provided), height 300 mm.  
Ref: 800 571

Description	Reference	Price
Overhead cutlery dispenser (1)	800 571	<b>£172</b>
Optional divider for trolley 200 plates	228 263	<b>£27</b>
Optional divider for trolley 300 plates	228 264	<b>£43</b>
Optional divider for trolley 400 plates	228 265	<b>£46</b>
Polyamide dust cover for 200 plate trolley	228 196	<b>£98</b>
Polyamide dust cover for 300 plate trolley	228 197	<b>£112</b>
Polyamide dust cover for 400 plate trolley (1)	228 198	<b>£105</b>
Polyamide dust cover for 200 plate trolley with cutlery dispenser	229 600	<b>£153</b>
Polyamide dust cover for 300 plate trolley with cutlery dispenser	229 601	<b>£246</b>
Polyamide dust cover for 400 plate trolley with cutlery dispenser (2)	229 602	<b>£241</b>
Option for s/steel wheels to plate trolley	702 181	<b>£204</b>

(1) Suitable for all plate trolleys except 2 tier trolleys

(2) Dimension of the cover 1035 x 700 x height 920 mm

## GN CONTAINER STORAGE TROLLEYS

For draining and storage of GN containers, grids and covers. Stainless steel construction. Welded stainless steel tube. Tube 25 x 25 mm. Removable support container support grids in wired stainless steel Ø 6 and 4 mm. Removable stop bars. 4 swivel wheels Ø 125 mm with polyamide cover including 2 brakes. Annular bumpers. The trolleys have 4 tiers 325 mm high. Removable of second tier makes it possible to store up to 530 mm high.



Description	Overall Dim. l x W x h (mm)	Reference	Price
Storage trolley standard model, 38 cases per tier	1270 x 620 x 1705	805 602	<b>£1,990</b>
Storage trolley large model, 51 cases per tier	1670 x 620 x 1705	805 605	<b>£2,343</b>
Cover for trolley, standard model	1270 x 620 x 1705	229 517	<b>£361</b>
Cover for trolley, large model	1670 x 620 x 1705	229 518	<b>£367</b>



805 602

Removable  
2nd tier







# RACK AND TRAY DOLLEYS



## General purpose basket rack dolly

Stainless steel construction. Base thickness 1,2 mm. Internal base dimensions: 510 x 510 mm. Bolted handle. 4 Ø 100 mm swivel wheels with galvanized steel cover. Max load: 80 kg.

Description	Overall Dim. l x W x h (mm)	Reference	Price
General purpose stainless steel rack dolly	515 x 515 x 165	<u>800 101</u>	<b>£138</b>
General purpose stainless steel rack dolly with handle	600 x 515 x 850	<u>800 102</u>	<b>£194</b>



## Heavy duty basket rack dolly (removable ABS base)

Stainless steel construction. Tube 25 x 25 mm. Removable ABS base. Internal base dimensions: 510 x 510 mm. Bolted handle. 4 Ø 125 mm swivel wheels with polyamide cover (includes 2 braked). Annular bumpers. Max load: 150 kg.

Description	Overall Dim. l x W x h (mm)	Reference	Price
Rack dolly with ABS base	570 x 570 x 225	800 111	<b>£216</b>
Rack dolly with ABS base and upstand	630 x 570 x 900	800 112	<b>£270</b>



## Heavy duty basket rack dolly (removable steel base)

Stainless steel frame construction 25 x 25 mm. Removable stainless steel base 1,2 mm thick. Internal base dimensions: 510 x 510 mm (rack dolly) and 750 x 510 mm (largest tray dolly). Bolted handle. 4 Ø 125 mm swivel wheels with polyamide cover including 2 brakes. Annular bumpers. Max load: 150 kg.

Description	Overall Dim. l x W x h (mm)	Reference	Price
Rack dolly with heavy duty steel base	570 x 570 x 225	800 125	<b>£231</b>
Rack dolly with heavy duty steel base + bolted handle	630 x 570 x 900	800 126	<b>£284</b>
Rack dolly with heavy duty steel base + bolted handle	870 x 570 x 900	800 130	<b>£330</b>



## Options

Description	Reference	Price
Extra-cost for rack and tray dollies with stainless steel wheels (not suitable for general purpose type rack dollies)	702 183	<b>£149</b>
Polyamide cover for rack dollies 530 x 530 x H. 300 mm	230 532	<b>£159</b>
Polyamide cover 750 x 510 x H. 300 mm for trays dollies	221 234	<b>£224</b>



## General purpose Euronorm tray dolly (fixed base)

For Euronorm trays or containers 600 x 400 mm. Food quality stainless steel construction. Tray thickness 1.2 mm. Base size 610 x 410 mm. Bolted handle 4 Ø 100 mm swivel wheels with galvanized steel cover. Max load: 80 kg.

Description	Overall Dim. l x W x h (mm)	Reference	Price
Euronorm tray dolly (fixed base)	615 x 415 x 165	800 105	<b>£137</b>
Euronorm tray dolly (fixed base) with handle	700 x 415 x 850	800 106	<b>£241</b>



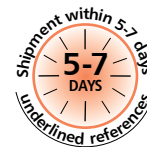
# GN CONTAINER STORAGE TROLLEYS

## THE TOURNUS ASSETS

- **Sturdiness:** max. load 250 kg per trolley and 20 kg per level.
- **Ergonomic:** intermediate brace on trolleys with 10-17-20 levels and GN 2/1 with 15 levels allowing maximum access for front loading.

Stainless steel construction. Square tubes 25 x 25 mm. Welded tray runners with container stop. 4 swivel wheels Ø 125 mm, including 2 brakes, with polyamide cover. Annular bumpers.

Overall dimensions: trolleys 1/1 GN size - 655 x 455 mm, trolleys 2/1 GN - 775 x 660 mm. Trolleys with 6 and 8 tiers include a top shelf. Max load: 20 Kg per tier and 250 Kg per trolley.



## GN container storage trolleys

Description	e* (mm)	Height (mm)	Number of tiers	Reference	Price
1/1 GN trolley with top shelf.	81	760	6	<u>804 201</u>	£369
1/1 GN trolley with top shelf.	81	900	8	<u>804 203</u>	£388
1/1 GN trolley	144	1650	10	<u>804 204</u>	£374
1/1 GN trolley	81	1490	15	<u>804 206</u>	£394
1/1 GN trolley	81	1650	17	<u>804 207</u>	£405
1/1 GN trolley	77	1785	20	<u>804 209</u>	£427
2/1 GN trolley with top shelf	81	760	6	<u>804 231</u>	£427
2/1 GN trolley with top shelf	81	900	8	<u>804 233</u>	£434
2/1 GN trolley	144	1650	10	<u>804 234</u>	£402
2/1 GN trolley	81	1490	15	<u>804 236</u>	£448
2/1 GN trolley	81	1650	17	<u>804 237</u>	£459
2/1 GN trolley	77	1785	20	<u>804 239</u>	£467

(\*) e: vertical space between tray runners.

Extra-cost for racking trolleys (15, 17 or 20 levels) with tie bar - Ref: 702 221 - Price: **£196**

Extra cost for GN racking with 4 stainless steel wheels (welded, delivered flat packed or stackable) Ref: 702 181 - Price: **£204**



804 201



804 209



804 237



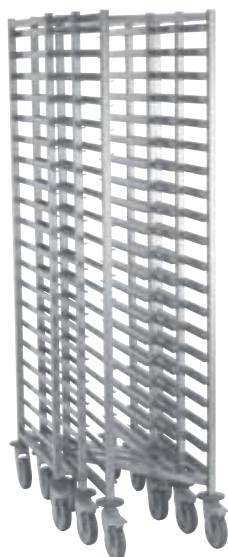
## Transportable GN container trolley

Stainless steel construction. Square tubular uprights 25 x 25 mm. Welded tray runners with container stops at the end. **Full height vertical closing bar for container transport inside a vehicle**, loading, unloading, passing through doors whilst heavily loaded. Ø 125 wheels with non protruding stainless steel cover to take up as little place as possible. Overall dimensions: 583 x 384 mm, height 1485 mm. Space between tray runners 85 mm.

Description	Reference	Price
transport trolley 1/1 GN with 15 tiers	804 212	£1,039



# GASTRONORM RACKING TROLLEYS



## Stackable GN container trolleys

Description	e* (mm)	Overall dim. l x W x h (mm)	Number of levels	Reference	Price
1/1 GN stackable trolley	77	655 x 455 x 1785	20	804 229	£683
2/1 GN stackable trolley	77	775 x 655 x 1785	20	804 259	£719

(\*) e: vertical space between tray runners

## Washable polyamide covers for GN container trolleys

Covers for 6-8 tier trolleys.

Covers with zip for 10 tier trolleys GN and more

Description	L x W x h (mm)	For trolleys	Reference	Price
Cover	590 x 405 x 740	1/1 GN 6-8 tiers	221 235	£241
Cover	710 x 610 x 740	2/1 GN 6-8 tiers	221 236	£244
Cover	605 x 405 x 1325	1/1 GN 15 tiers*	221 240	£252
Cover	725 x 610 x 1325	2/1 GN 15 tiers	221 241	£252
Cover	590 x 405 x 1620	1/1 GN 10-17-20 tiers	228 168	£188
Cover	710 x 610 x 1620	2/1 GN 10-17-20 tiers	228 169	£192

(\*) including transport trolley : 804 212



228 169

## Disposable polyethylene covers for GN container trolleys

Disposable covers in polyethylene thickness 50 microns : delivered by box of 100 covers.

Description	For trolleys	Reference	Price.
100 polyethylene cover	GN 1/1	228 170	£248
100 polyethylene cover	GN 2/1	228 171	£350

# TROLLEY FOR DISHWASHER BASKETS



**Trolley with 8 tiers** (for horizontal storage of dishwasher baskets).

Stainless steel construction. Square tubular leg 25 x 25 mm.

Continuous argon welded basket runners. 4 swivel wheels 125 mm,

2 brakes, with polyamide cover. Annular wheel guards.

Space between tiers : 189 mm.



Description	Overall dim. l x W x h (mm)	Reference	Price
Trolley with 8 tiers (for horizontal storage of dishwasher baskets)	630 x 630 x 1785	<u>804 193</u>	£535
Polyamide cover with zip for trolley 8 tiers	585 x 600 x 1620	221 231	£335





# EURONORM CONTAINER / CRATE / TRAY TROLLEYS



Stainless steel 25 x 25 frame construction. Argon welded tray runners with tray runner stops at each end. 4 swivel wheels Ø 125 mm, with polyamide cover (2 braked). Annular bumpers. The 9 tier trolleys include a solid top shelf. Max load: 20 Kg per tier and 250 Kg per trolley.

Euronorm trolleys	Opening (mm)	e* (mm)	Overall dim. l x W x h(mm)	Number of tiers	Reference	Price
400 x 600 mm	400	70	725 x 540 x 900	9	804 155	£535
400 x 600 mm	400	125	725 x 540 x 1785	12	804 156	£427
400 x 600 mm	400	94	725 x 540 x 1785	16	804 157	£470
600 x 400 mm (1)	600	94	525 x 732 x 1785	16	804 158	£518
400 x 600 mm	400	75	725 x 540 x 1785	20	804 159	£495
600 x 400 mm (1)	600	75	525 x 732 x 1785	20	804 160	£603
400 x 800 mm	400	75	925 x 540 x 1785	20	804 161	£825
600 x 800 mm (1)	600	94	925 x 732 x 1785	16	804 162	£743
600 x 800 mm (1)	600	75	925 x 732 x 1785	20	804 163	£788

(\*) e: vertical space between tray runners.

(1) 600 mm opening trolleys do not accept ABS trays.

THE  
TOURNUS  
ASSETS

- Sturdy trolleys
- Stainless steel wheels
- Rolling quality

## Euronorm container / crate / tray trolley options

Description	Reference	Price
4 stainless steel wheels	702 181	£204
Washable polyamide cover (for 400 x 600 mm trolleys) with 400 opening (except 9 tier model).	229 519	£272

# PROVING CHAMBER EURONORM TRAY TROLLEYS

Stainless steel 25 x 25 frame construction. Argon welded tray runners with runner stops at each end. 4 swivel wheels Ø 125 mm, with galvanized steel wheel cover, non protruding, designed for heavy loads, freezing environment (-40°C) and proving chambers.

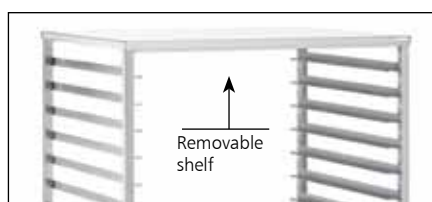


814 322

Euronorm storage trolleys	Opening (mm)	e* (mm)	Overall dim. l x W x h(mm)	Number of tiers	Reference	Price
600 x 800 mm	600	75	855 x 662 x 1775	20	814 321	£1,049
800 x 600 mm	800	75	655 x 862 x 1775	20	814 322	£867
1000 x 700 mm	1000	75	755 x 1062 x 1775	20	814 323	£1,006
1000 x 800 mm	1000	75	855 x 1062 x 1775	20	814 324	£1,120

## With removable top shelf

600 x 800 mm	600	75	855 x 662 x 1775	20	824 321	£1,215
800 x 600 mm	800	75	655 x 862 x 1775	20	824 322	£1,039
1000 x 700 mm	1000	75	755 x 1062 x 1775	20	824 323	£1,211
1000 x 800 mm	1000	75	855 x 1062 x 1775	20	824 324	£1,344



## Proving chamber Euronorm tray trolley options

Description	Reference	Price
2 swivel wheels - galvanized wheel cover with brakes	702 140	£79
4 wheels with stainless steel cover	702 141	£210
4 swivel with stainless steel cover - 2 braked	702 142	£245



## DOUGH CONTAINER TROLLEY

Trolleys for round and rectangular dough containers and basins. Welded stainless steel construction. Square tube 25 x 25 mm. Argon welded runners with runner stops at each end. 4 polyamide swivel wheels Ø 125 mm including braked.

804 165



Dough container trolley (tiers)	Opening (mm)	Overall Dim. l x W x h (mm)	Reference	Price
8 tiers	195	660 x 470 x 1810	804 165	£731

## FLOUR CONTAINER TROLLEYS

Stainless steel construction. 4 Ø 100 mm swivel wheels with galvanized steel cover.

907 005



Description	Overall Dim. l x W x h (mm)	Reference	Price
120 litre flour container + stainless steel lid	605 x 395 x 725	907 005	£798
120 litre flour container with dividing panel + s/ steel lid	605 x 395 x 725	806 150	£967

## UTENSIL & BAKERY EQUIPMENT STORAGE TROLLEYS

**Utensil hook stand:** Stainless steel construction. 4 swivel wheels Ø 100 mm with galvanized steel cover. 12 bars for utensils.

**Utensil holder / preparation trolley:** Stainless steel construction. 4 swivel wheels Ø 100 mm with galvanized steel cover. 1 container GN 1/1, depth 40 mm removable, 3 bars for utensils with 1 hook.

**Chef's work station trolley:** Stainless steel construction. 4 swivel wheels Ø 125 mm with polyamide cover, stainless steel axle and ball bearings. Sliding frame 7 2/1 GN levels, 1 polyethylene worktop, 1 support for 6 copolyester 1/6 GN depth 100 mm pans provided, 1 lateral box for knives, 1 bar for accessories.

906 440



801 331



801 310



Description	Overall Dim. l x W x h (mm)	Reference	Price
Utensil hook stand	660 x 640 x 1755	906 440	£548
Utensil holder / preparation trolley	560 x 365 x 1600	801 310	£927
Chef's work station trolley	590 x 690 x 1750	801 331	£1,514



## GN CONTAINER HOLDING TROLLEY



806 071

Welded stainless steel construction. Capacity: 2 x 1/1 GN pans or 1 x 2/1 GN pan, depth 200 mm (GN pans not provided). 4 swivel wheels Ø 125 mm, with polyamide cover, including 2 braked.

Description	Overall Dim. l x W x h (mm)	Reference	Price
stackable trolley for GN pans	740 x 625 x 850	806 071	<b>£369</b>

Extra cost for 4 stainless steel wheels - Ref: 702 180 - Price : **£204**

## BREAKFAST TRANSPORT TROLLEY

Trolley with upper shelf and anti-fall gallery rails. 2 x 7 level 1/1GN tiers with 325 mm openings. With handle. 4 swivel wheels Ø 125 mm with polyamide cover including 2 brakes. Annular bumpers.



800 066

Description	Overall Dim. l x W x h (mm)	Reference	Price
breakfast transport trolley	850 x 640 x 1020	800 066	<b>£204</b>



## WET WELL HEATED BAIN-MARIE TROLLEYS (MANUAL FILL)

Stainless steel construction for 1/1 GN containers up to 200mm deep (not supplied). Independant well regulated by separated thermostats with illuminated indicator. Heating by shielded resistances. Protection bumpers and lower shelf. Drain with 1/4 turn valve. 4 swivel wheels Ø 125 mm with polyamide cover including 2 brakes. Voltage 230V 50 Hz.



812 321

Description	Overall Dim. l x W x h (mm)	Reference	Price
Bain-marie trolley, 2 x 1/1 GN containers	900 x 650 x 900	812321UK	<b>£2,997</b>
Bain-marie trolley, 3 x 1/1 GN containers	1300 x 650 x 900	812322UK	<b>£4,071</b>





# KITCHEN STORAGE & PREPARATION TROLLEYS



801 341



906 521



906 520



906 446

**Bread preparation trolley:** Stainless steel construction. 4 swivel wheels Ø 125 mm, with polyamide cover, including 2 brakes. Rear preparation shelf for cutting bread. Width 350 mm, 2 copolyester 2/1 GN containers. Depth 200 mm on runners.

**Vacuum packed food trolley:** Stainless steel construction. 4 swivel wheels Ø 125 mm, with polyamide cover, including 2 brakes. Removable waste bag folding holder 50 litres. Polyethylene sheet, perforated sheet. Polypropylene GN 1/1 container on slides.

**Fish gutting trolley:** Stainless steel construction. 4 swivel wheels Ø 125 mm, with polyamide cover. Perforated top. Polyethylene sliding drawer.

**Spice / garnish trolley:** Stainless steel construction. 4 swivel wheels Ø 125 mm, with polyamide cover including 2 brakes. Provided with 8 copolyester containers GN 1/6 depth 100 + lids.



Description	Overall dim. l x W x h (mm)	Reference	Price
Bread preparation trolley	770 x 700 x 775	801 341	£1,394
Vacuum packed food trolley	850 x 600 x 850	906 521	£999
Fish gutting trolley	850 x 600 x 850	906 520	£775
Spice / garnish trolley	720 x 410 x 750	906 446	£662

## MEAL CLEARING TROLLEY

Delivered with 3 stainless steel 1/3 GN cutlery pans, 100 mm deep,, waste chute with rubber flange. 4 swivel wheels with polyamide cover including 2 brakes. Annular bumpers.



800 061

Description	Overall dim. l x W x h (mm)	Reference	Price
Meal clearing trolley	1330 x 640 x 920	800 061	£935

## MULTI-PURPOSE TROLLEY

Trolley with 2 trays 1000 x 600 mm. **Smooth and sturdy trays.** Horizontal handle. Max load: **100 kg/ tray.** 4 swivel wheels Ø 125 mm.



Description	Overall dim. l x W x h (mm)	Reference	Price
Multi-purpose trolley	1070 x 670 x 850	801 625	£615

Extra cost for 4 stainless steel wheels - Ref:702 180 - Price: £204



## TRANSPORT (PLATFORM) TROLLEYS

Platform 1000 x 600 mm. 4 wheels: 2 fixed, 2 swivel Ø 160 mm, with galvanized steel cover. Max load: 350 Kg.



Description	Overall dim. l x W x h (mm)	Reference	Price
Open aluminium platform trolley	1250 x 600 x 1000	802 160	<b>£623</b>
Aluminium platform trolley with solid base	1250 x 600 x 1000	802 162	<b>£719</b>
Open S/ steel platform trolley	1200 x 600 x 1000	802 165	<b>£735</b>
S/ steel platform trolley with solid base	1200 x 600 x 1000	802 166	<b>£887</b>
Extra-cost for trolley equipped with 4 s/ steel wheels Ø 160 mm		702 201	<b>£217</b>
Extra-cost for rubber bumpers on 3 sides		702 211	<b>£302</b>

## LABORATORY TROLLEYS

Stainless steel tube 35 x 35 mm. Removable stainless steel punnet basket. 4 swivel wheels Ø 125 mm with galvanized steel cover including 2 brakes.



Description	Overall dim. l x W x h (mm)	Reference	Price
Single tray holder, basket 1220 x 400 x 500 mm	1310 x 500 x 750	801 271	<b>£1,024</b>
Double tray holder, basket 1220 x 400 x 500 mm	1310 x 500 x 1110	801 276	<b>£1,901</b>

## MEAT HOOK TROLLEYS

Aluminium construction. Max load: 600 kg. 4 wheels: 2 fixed, 2 swivel, with galvanized steel cover Ø 160 mm (10 hook model), Ø 200 mm (16 hook model).



Description	Overall dim. l x W x h (mm)	Reference	Price
Meat hook trolley (10 hook)	1150 x 750 x 1800	802 010	<b>£2,030</b>
Meat hook trolley (16 hook)	1800 x 750 x 1800	802 020	<b>£2,593</b>

Extra-cost for trolley equipped with 4 stainless steel wheels Ø 160 mm - 702 201 : **£217**

Extra-cost for trolley equipped with 4 stainless steel wheels Ø 200 mm - 702 203: **£449**

## ANGLE BAR



Stainless steel construction, 40 x 40 mm, 1 mm thick.

Description	Lengths (mm)	Reference	Price
Angle bar	1500	803 392	<b>£39</b>
Angle bar	2000	803 393	<b>£30</b>
Angle bar	2500	803 394	<b>£45</b>

# Speed Shelving



## YOUR SHELVING LAYOUT SOFTWARE



**Easy  
to use**

For optimum layout of your shelving. Speed Shelving enables you to draw up an estimate for your customer, transform it into an order and prepare the packaging.

### EASY TO USE

Intuitive browsing. The parts are predefined, simple set-up for easily modified layouts. Possibility of printing out an estimate and drawing in Excel.

### TRACEABILITY

The files are classed and accessible. The quotations can be easily changed, used to place the order and prepare the installation.

### RELIABILITY

All the parameters of the room are taken into account: doors, necessary clearance, possible presence of evaporators, recess resulting from grooved plinths.

Available on [www.tournus.com](http://www.tournus.com)



Video !





The NF Food hygiene certification certifies the quality of the materials used for food contact and guarantees easy cleaning.



The NSF certification guarantees easy cleaning and safety to consumers.

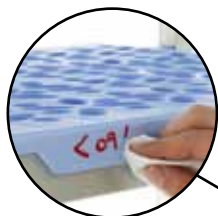


# SHELVING



## New shelf:

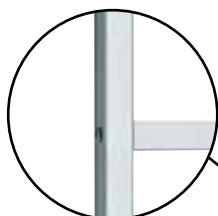
Innovative design  
Overhanging shelves cover up the upper part of the aluminium bar, for an optimal fit.



**Tournus exclusive :** there is a space at the edge of the shelves where white board erasable markers can be used to note the contents of the shelf, helps manage the stock of food.

## Hygienic:

removable shelves, machine washable up to 90°C.



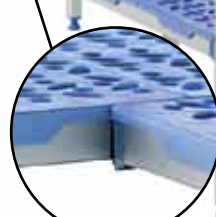
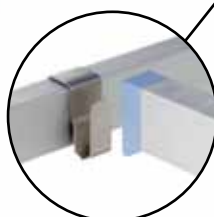
## Sturdiness :

Uprights made of tubular anodised aluminium 32 x 30 mm.



## Load resistance :

150 kg evenly distributed per level.



## Easy assembly:

by tapered self-locking insertion to strengthen the structure.



## Stability :

Adjustable jacks without visible threading (hygienic).

## Modular :

in line or corner type assembly.

## Easy :

2 hooks per tier whatever the width 400, 500 or 560 mm.

## Optimum accessibility :

the corner hook does away with the upright so as to store products in the corner.  
Easy floor cleaning.



Shelving entirely recyclable



## Speed Shelving

Shelving design software available on [www.tournus.com/en/](http://www.tournus.com/en/)



Flash on our documentation !



**One person  
alone  
can assemble  
5 metres  
in 5 minutes  
without tools**





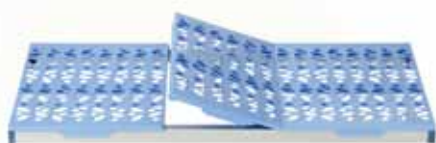


# RACKING WITH REMOVABLE SHELVES



Racking with removable shelves consist of shelves and uprights. Rapid assembly process, without tools, by simply snapping into place. Shaped assembly is possible by replacing an upright by corner hooks (2 corner hooks per tier). Load: up to 200 kg by level, 120 kg for the two higher lengths. NF Hygiene Certified. Operating temperature: -30°C à + 60°C. Shelving is washable in dishwasher (90°C) and fits over the top of the bar: nicer and more stable. It is also possible to write directly on the shelf with an erasable ink pen. Many accessories: Rear protection bar, separations, plates for fixing to the floor and walls.

**TO PLACE AN ORDER:** see pages 34 to 37 for the best prices of combinations for linear or angle assembly. **On request, each carton can be marked.** The combination price results from the addition of shelves, upright and angle hooks (if necessary).



500 371

## Removable polypropylene shelves

2 anodised aluminium bars and high density polypropylene shelves.



Lengths (mm)	Width 400 mm		Width 500 mm		Width 560 mm (GN)	
	Ref.	Price	Ref.	Price	Ref.	Price
608	<u>500 366</u>	£41	<u>500 386</u>	£48	<u>500 416</u>	£50
708	<u>500 367</u>	£44	<u>500 387</u>	£49	<u>500 417</u>	£54
808	<u>500 368</u>	£52	<u>500 388</u>	£53	<u>500 418</u>	£57
910	<u>500 369</u>	£59	<u>500 389</u>	£63	<u>500 419</u>	£65
1010	<u>500 370</u>	£63	<u>500 390</u>	£65	<u>500 420</u>	£69
1110	<u>500 371</u>	£66	<u>500 391</u>	£68	<u>500 421</u>	£72
1210	<u>500 372</u>	£69	<u>500 392</u>	£70	<u>500 422</u>	£76
1312	<u>500 373</u>	£76	<u>500 393</u>	£79	<u>500 423</u>	£85
1412	<u>500 374</u>	£79	<u>500 394</u>	£81	<u>500 424</u>	£90
1512	<u>500 375</u>	£82	<u>500 395</u>	£87	<u>500 425</u>	£94
1612	<u>500 376</u>	£87	<u>500 396</u>	£90	<u>500 426</u>	£98
1714	<u>500 377</u>	£95	<u>500 397</u>	£98	<u>500 427</u>	£105

### THE TOURNUS ASSETS

- Even more storage possibilities
- Solid shelves and shelves compatible with other models: possibility to mix shelves.





500 124



## Uprights

In aluminium with screwed fixing studs determining the number of tiers.



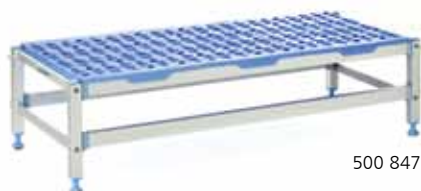
Height 1750 mm	Width 400 mm		Width 500 mm		Width 560 mm (GN)	
	Ref.	Price	Ref.	Price	Ref.	Price
3 tier	<u>500 103</u>	<b>£97</b>	<u>500 123</u>	<b>£100</b>	<u>500 153</u>	<b>£105</b>
4 tier	<u>500 104</u>	<b>£99</b>	<u>500 124</u>	<b>£103</b>	<u>500 154</u>	<b>£105</b>
5 tier	<u>500 105</u>	<b>£105</b>	<u>500 125</u>	<b>£106</b>	<u>500 155</u>	<b>£108</b>

## Uprights on wheels

2 swivel wheels with ball bearings diameter 125 mm polyamid cover including 1 brake. Load maxi 100 kg/level.



Height 1750 mm	Width 400 mm		Width 500 mm		Width 560 mm (GN)	
	ref.	price	ref.	price	ref.	price
3 tier with wheels	-	-	<u>500 133</u>	<b>£164</b>	<u>500 163</u>	<b>£168</b>
4 tier with wheels	-	-	<u>500 134</u>	<b>£167</b>	<u>500 164</u>	<b>£169</b>
5 tier with wheels	-	-	<u>500 135</u>	<b>£170</b>	<u>500 165</u>	<b>£173</b>



500 847

## Dunnage rack

2 low uprights + 1 polypropylene shelf.

Description	Overall dim. L x W x H (mm)	Reference	Price
Dunnage rack 1 tier	890 x 500 x 300	500 844	<b>£281</b>
Dunnage rack 1 tier	1192 x 500 x 300	500 847	<b>£284</b>
Dunnage rack 1 tier	1494 x 500 x 300	500 850	<b>£307</b>





# SHELVING ASSEMBLIES (STRAIGHT RUN)

## Height 1750 mm - Polypropylene shelves



**To place an order:**

Please indicate the depth code followed by the overall length required.

**PLE 1594**

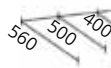
Depth

Length

**For shelving on wheels:** (500 and 560 mm deep only).

Add the suffix R at the end of the reference (e.g.: PLE 1594R).

Price of the whole combination on wheels: add £ 52 for every upright to the price of the whole combination per leg (above).



Depth 560 mm: GN

Overall length (mm)	Combinaisons	Depth 400 mm			Depth 500 mm			Depth 560 mm (GN)		
		3 tier PLA	4 tier PLB	5 tier PLC	3 tier PLD	4 tier PLE	5 tier PLF	3 tier PLG	4 tier PLH	5 tier PLI
690	608	312	355	405	341	393	447	337	384	434
790	708	322	371	425	344	398	453	352	403	459
890	808	344	400	461	355	412	472	374	433	496
992	910	368	431	500	382	447	516	397	462	534
1092	1010	374	441	511	390	457	527	411	483	558
1192	1110	386	454	530	400	472	548	424	497	576
1292	1210	397	470	549	408	483	560	434	512	595
1394	1312	420	501	587	434	517	603	460	548	640
1494	1412	427	509	597	442	526	615	471	561	658
1594	1512	439	524	616	452	542	632	483	576	677
1694	1612	448	540	633	464	557	652	497	596	702
1728	808+808	593	703	819	612	722	838	646	760	883
1796	1714	471	569	673	489	592	694	519	626	739
1830	808+910	615	732	857	637	758	882	666	790	921
1932	910+910	637	762	893	663	793	925	688	821	958
2032	910+1010	646	771	905	672	802	938	706	839	983
2132	1010+1010	652	781	918	679	812	951	719	860	1,006
2232	910+1210	666	800	942	688	828	968	726	869	1,021
2334	910+1312	688	831	981	716	862	1,011	753	904	1,063
2432	1110+1210	685	827	972	709	851	999	753	904	1,063
2532	1210+1210	695	840	993	716	862	1,011	764	920	1,082
2634	1210+1312	719	871	1,029	742	897	1,057	790	954	1,124
2736	1312+1312	742	901	1,066	768	932	1,099	816	990	1,169
2834	1210+1512	739	896	1,061	760	922	1,087	812	985	1,162
2936	1312+1512	760	925	1,098	787	956	1,128	838	1,019	1,206
3036	1412+1512	768	935	1,111	794	966	1,143	849	1,033	1,225
3136	1512+1512	779	951	1,127	804	982	1,161	861	1,049	1,242
3172	1010+1010+1010	931	1,122	1,325	967	1,168	1,327	1,027	1,236	1,457
3236	1512+1612	790	964	1,148	816	996	1,179	877	1,067	1,268
3272	910+1110+1110	945	1,143	1,349	983	1,187	1,397	1,034	1,245	1,468
3336	1612+1612	800	981	1,167	828	1,010	1,199	890	1,088	1,292
3372	1010+1110+1110	953	1,153	1,361	991	1,198	1,408	1,050	1,267	1,495
3438	1612+1714	825	1,009	1,204	852	1,046	1,241	913	1,118	1,330
3472	1010+1110+1210	963	1,168	1,380	997	1,207	1,423	1,061	1,128	1,513
3540	1714+1714	847	1,039	1,240	880	1,080	1,284	935	1,148	1,368
3572	1110+1110+1210	973	1,181	1,399	1,007	1,223	1,440	1,071	1,297	1,529
3674	1110+1110+1312	997	1,211	1,436	1,034	1,258	1,484	1,098	1,331	1,575
3772	1210+1210+1210	997	1,211	1,436	1,024	1,241	1,465	1,094	1,326	1,569
3812	910+910+910+910	1,144	1,426	1,682	1,228	1,483	1,744	1,275	1,535	1,806
3876	1110+1312+1312	1,031	1,258	1,494	1,067	1,301	1,541	1,136	1,380	1,636
3912	910+910+910+1010	1,186	1,434	1,695	1,234	1,494	1,757	1,290	1,554	1,831
3976	1210+1312+1312	1,042	1,271	1,512	1,067	1,312	1,552	1,146	1,396	1,655
4078	1312+1312+1312	1,064	1,301	1,549	1,101	1,345	1,595	1,172	1,431	1,700
4178	1312+1312+1412	1,071	1,312	1,559	1,109	1,355	1,608	1,182	1,445	1,717
4278	1312+1312+1512	1,083	1,320	1,579	1,120	1,371	1,626	1,194	1,461	1,736
4378	1412+1412+1412	1,087	1,331	1,585	1,123	1,376	1,632	1,206	1,474	1,755
4478	1312+1512+1512	1,101	1,351	1,610	1,139	1,396	1,658	1,216	1,489	1,774
4578	1412+1512+1512	1,109	1,360	1,622	1,146	1,405	1,670	1,229	1,504	1,791
4612	1110+1110+1110+1110	1,251	1,522	1,806	1,301	1,581	1,868	1,379	1,673	1,981
4678	1312+1612+1612	1,123	1,380	1,647	1,161	1,427	1,695	1,245	1,528	1,823
4712	1110+1110+1110+1210	1,265	1,540	1,825	1,309	1,591	1,881	1,391	1,687	1,997
4778	1512+1512+1612	1,130	1,391	1,660	1,169	1,435	1,707	1,255	1,541	1,834
4814	1110+1110+1110+1312	1,285	1,569	1,862	1,336	1,626	1,924	1,416	1,723	2,042
4878	1512+1612+1612	1,143	1,405	1,678	1,179	1,450	1,725	1,269	1,558	1,860
4914	1110+1110+1210+1312	1,298	1,582	1,881	1,342	1,636	1,936	1,429	1,738	2,061
4978	1612+1612+1612	1,154	1,422	1,697	1,191	1,465	1,744	1,283	1,579	1,885



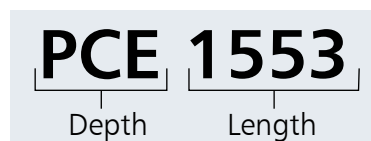
# SHELVING ASSEMBLIES (ANGLED RUN)

Height 1750 mm - Polypropylene shelves



To place an order:

Please indicate depth code followed by the overall length required.



The reference and the price include the angle hooks.



Overall length (mm)	Combinaisons	Depth 400 mm			Depth 500 mm			Depth 560 mm (GN)		
		3 tier PCA	4 tier PCB	5 tier PCC	3 tier PCD	4 tier PCE	5 tier PCF	3 tier PCG	4 tier PCH	5 tier PCI
649	608	230	278	328	256	312	368	248	300	351
749	708	242	293	345	261	316	373	265	318	375
849	808	265	322	384	272	332	392	285	348	412
951	910	285	352	422	298	367	435	309	377	449
1051	1010	294	363	433	305	375	447	323	398	476
1151	1110	305	376	451	316	391	467	335	412	493
1251	1210	316	392	470	323	400	479	345	428	512
1353	1312	338	423	507	350	435	521	372	462	556
1453	1412	345	432	520	356	445	535	384	478	573
1553	1512	356	446	539	369	460	554	394	491	593
1653	1612	369	461	557	380	476	571	409	512	618
1687	808+808	512	624	741	526	643	758	557	677	799
1755	1714	391	490	594	405	509	615	432	542	654
1789	808+910	535	653	778	554	677	800	579	707	836
1891	910+910	557	683	815	579	712	845	600	735	876
1991	910+1010	563	691	828	588	720	858	616	756	900
2091	1010+1010	571	705	839	594	731	869	630	775	924
2191	910+1210	588	722	865	605	745	888	640	786	937
2293	910+1312	609	753	902	630	780	932	664	821	981
2391	1110+1210	605	748	896	624	770	920	664	821	981
2491	1210+1210	616	763	914	630	780	932	677	834	998
2593	1210+1312	640	793	952	658	815	973	703	869	1,042
2695	1312+1312	661	823	990	683	849	1,019	727	904	1,085
2793	1210+1512	658	818	983	677	839	1,005	723	900	1,079
2895	1312+1512	680	847	1,021	703	876	1,050	750	934	1,122
2995	1412+1512	686	858	1,032	710	884	1,062	762	950	1,142
3095	1512+1512	699	872	1,051	720	900	1,080	773	963	1,159
3131	1010+1010+1010	849	1,045	1,245	883	1,085	1,291	939	1,153	1,374
3195	1512+1612	710	887	1,068	732	914	1,099	788	985	1,185
3231	910+1110+1110	865	1,064	1,271	898	1,106	1,316	946	1,162	1,386
3295	1612+1612	720	902	1,088	743	930	1,118	802	1,003	1,209
3331	1010+1110+1110	872	1,075	1,283	905	1,115	1,328	961	1,181	1,409
3397	1612+1714	743	932	1,124	769	963	1,161	826	1,033	1,245
3431	1010+1110+1210	883	1,089	1,302	913	1,124	1,341	971	1,198	1,430
3499	1714+1714	766	961	1,162	795	998	1,205	847	1,063	1,283
3531	1110+1110+1210	894	1,105	1,321	924	1,140	1,359	985	1,211	1,447
3633	1110+1110+1312	917	1,135	1,358	951	1,175	1,403	1,009	1,245	1,490
3731	1210+1210+1210	917	1,135	1,358	939	1,159	1,385	1,005	1,241	1,485
3771	910+910+910+910	1,098	1,345	1,605	1,143	1,400	1,664	1,187	1,450	1,723
3835	1110+1312+1312	951	1,178	1,414	985	1,221	1,460	1,048	1,297	1,553
3871	910+910+910+1010	1,106	1,355	1,616	1,151	1,409	1,676	1,203	1,469	1,747
3935	1210+1312+1312	961	1,193	1,433	992	1,230	1,470	1,059	1,312	1,573
4037	1312+1312+1312	985	1,224	1,469	1,018	1,265	1,515	1,084	1,345	1,615
4137	1312+1312+1412	992	1,233	1,483	1,025	1,273	1,525	1,096	1,360	1,634
4237	1312+1312+1512	1,002	1,247	1,501	1,035	1,289	1,546	1,107	1,376	1,653
4337	1412+1412+1412	1,005	1,251	1,508	1,039	1,295	1,552	1,118	1,390	1,671
4437	1312+1512+1512	1,022	1,272	1,531	1,054	1,314	1,577	1,128	1,405	1,688
4537	1412+1512+1512	1,028	1,282	1,545	1,062	1,324	1,589	1,140	1,422	1,708
4571	1110+1110+1110+1110	1,172	1,445	1,727	1,216	1,500	1,788	1,291	1,589	1,897
4637	1312+1612+1612	1,043	1,302	1,570	1,077	1,343	1,614	1,158	1,445	1,740
4671	1110+1110+1110+1210	1,182	1,461	1,746	1,225	1,510	1,800	1,302	1,605	1,916
4737	1512+1512+1612	1,051	1,313	1,581	1,084	1,353	1,626	1,167	1,455	1,751
4773	1110+1110+1110+1312	1,206	1,489	1,783	1,249	1,545	1,843	1,328	1,638	1,958
4837	1512+1612+1612	1,062	1,327	1,601	1,096	1,369	1,645	1,180	1,474	1,777
4873	1110+1110+1210+1312	1,216	1,504	1,801	1,260	1,554	1,856	1,340	1,654	1,979

# SHELVING ASSEMBLIES WITH ALL **SOLID SHELVES**

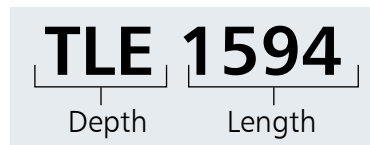
(straight/angled runs) - Height 1750 mm

Polypropylene solid shelves



To place an order:

please indicate depth code followed  
by the overall length required.



## LINEAR ASSEMBLY

## ADDITIONAL SHELVING ANGLE

Combinaisons	Overall length (mm)	Depth 500 mm			Overall length (mm)	Depth 500 mm		
		3 tier TLD	4 tier TLE	5 tier TLF		3 tier TCD	4 tier TCE	5 tier TCF
608	690	348	408	460	649	265	321	380
708	790	355	412	472	749	272	332	392
808	890	368	428	490	849	282	345	410
910	992	393	462	535	951	309	381	453
1010	1092	404	478	554	1051	319	396	472
1110	1192	411	487	565	1151	328	405	485
1210	1292	424	503	586	1251	336	422	504
1312	1394	448	537	627	1353	366	454	548
1412	1494	460	553	647	1453	375	470	565
1512	1594	471	567	664	1553	387	485	586
1612	1694	483	583	683	1653	398	501	603
808+808	1728	632	753	877	1687	550	672	795
1714	1796	508	616	726	1755	425	535	647
808+910	1830	660	788	920	1789	575	707	838
910+910	1932	685	823	962	1891	600	741	882
910+1010	2032	695	836	982	1991	613	756	901
1010+1010	2132	709	851	999	2091	624	770	920
910+1210	2232	716	862	1,011	2191	630	780	932
910+1312	2334	742	897	1,057	2293	658	815	973
1110+1210	2432	734	887	1,043	2391	650	804	962
1210+1210	2532	745	902	1,062	2491	661	821	982
1210+1312	2634	771	937	1,106	2593	686	854	1,025
1312+1312	2736	797	970	1,149	2695	714	889	1,067
1210+1512	2834	794	966	1,143	2793	710	884	1,062
1312+1512	2936	821	1,000	1,186	2895	735	920	1,106
1412+1512	3036	831	1,017	1,205	2995	746	934	1,123
1512+1512	3136	843	1,031	1,224	3095	758	950	1,143
1010+1010+1010	3172	1,011	1,228	1,446	3131	927	1,145	1,367
1512+1612	3236	852	1,046	1,241	3195	769	963	1,161
910+1110+1110	3272	1,017	1,232	1,453	3231	932	1,151	1,372
1612+1612	3336	865	1,061	1,262	3295	780	980	1,179
1010+1110+1110	3372	1,027	1,245	1,470	3331	942	1,166	1,391
1612+1714	3438	890	1,096	1,303	3397	805	1,012	1,224
1010+1110+1210	3472	1,037	1,263	1,489	3431	954	1,179	1,408
1714+1714	3540	917	1,128	1,346	3499	832	1,049	1,267
1110+1110+1210	3572	1,046	1,271	1,502	3531	961	1,190	1,423
1110+1110+1312	3674	1,071	1,306	1,546	3633	989	1,225	1,465
1210+1210+1210	3772	1,067	1,301	1,541	3731	985	1,221	1,460
910+910+910+910	3812	1,271	1,543	1,819	3771	1,187	1,461	1,738
1110+1312+1312	3876	1,109	1,355	1,608	3835	1,025	1,273	1,525
910+910+910+1010	3912	1,282	1,556	1,836	3871	1,199	1,474	1,757
1210+1312+1312	3976	1,120	1,371	1,626	3935	1,035	1,289	1,546
1312+1312+1312	4078	1,146	1,405	1,670	4037	1,062	1,324	1,589
1312+1312+1412	4178	1,157	1,422	1,687	4137	1,073	1,339	1,608
1312+1312+1512	4278	1,169	1,435	1,707	4237	1,084	1,353	1,626
1412+1412+1412	4378	1,179	1,450	1,725	4337	1,096	1,369	1,645
1312+1512+1512	4478	1,191	1,465	1,744	4437	1,107	1,384	1,664
1412+1512+1512	4578	1,203	1,481	1,762	4537	1,118	1,398	1,682
1110+1110+1110+1110	4612	1,345	1,641	1,944	4571	1,263	1,558	1,862
1312+1612+1612	4678	1,212	1,496	1,781	4637	1,127	1,413	1,702
1110+1110+1110+1210	4712	1,357	1,657	1,960	4671	1,272	1,575	1,881
1512+1512+1612	4778	1,225	1,510	1,799	4737	1,140	1,429	1,719
1110+1110+1110+1312	4814	1,384	1,689	2,005	4773	1,299	1,609	1,924
1512+1612+1612	4878	1,235	1,523	1,819	4837	1,152	1,442	1,738
1110+1110+1210+1312	4914	1,395	1,706	2,023	4873	1,310	1,624	1,944
1612+1612+1612	4978	1,245	1,541	1,836	4937	1,162	1,459	1,757

# SHELVING ASSEMBLIES WITH SOLID SHELVES FOR BOTTOM TIER ONLY AND PERFORATED SHELVES (STRAIGHT/ANGLED RUNS)



## Height 1750 mm - Polypropylene shelves

The lower level is composed of solid shelves and the other levels consist of perforated shelves. **To place an order:** please indicate depth code followed by the overall length required.

**MLE 1594**  
Depth      Length

**Solid shelf protects products from moisture when cleaning the floor**



### LINEAR ASSEMBLY

Combinaisons	Overall length (mm)	Depth 500 mm		
		3 tier MLD	4 tier MLE	5 tier MLF
608	690	343	396	449
708	790	348	402	457
808	890	359	415	477
910	992	386	451	519
1010	1092	394	462	534
1110	1192	404	477	551
1210	1292	412	487	563
1312	1394	440	521	608
1412	1494	447	534	622
1512	1594	459	549	642
1612	1694	470	562	659
808+808	1728	620	731	846
1714	1796	496	597	703
808+910	1830	646	766	889
910+910	1932	672	799	933
910+1010	2032	680	811	946
1010+1010	2132	687	823	960
910+1210	2232	699	835	977
910+1312	2334	723	871	1,022
1110+1210	2432	717	861	1,007
1210+1210	2532	724	872	1,023
1210+1312	2634	751	906	1,065
1312+1312	2736	778	941	1,109
1210+1512	2834	771	933	1,098
1312+1512	2936	797	967	1,142
1412+1512	3036	805	980	1,155
1512+1512	3136	818	994	1,173
1010+1010+1010	3172	983	1,181	1,387
1512+1612	3236	829	1,007	1,192
910+1110+1110	3272	994	1,199	1,407
1612+1612	3336	839	1,024	1,210
1010+1110+1110	3372	1,002	1,209	1,423
1612+1714	3438	866	1,059	1,255
1010+1110+1210	3472	1,010	1,222	1,435
1714+1714	3540	891	1,092	1,298
1110+1110+1210	3572	1,022	1,234	1,453
1110+1110+1312	3674	1,048	1,269	1,497
1210+1210+1210	3772	1,037	1,258	1,481
910+910+910+910	3812	1,241	1,498	1,759
1110+1312+1312	3876	1,082	1,315	1,553
910+910+910+1010	3912	1,249	1,509	1,774
1210+1312+1312	3976	1,090	1,326	1,567
1312+1312+1312	4078	1,117	1,360	1,610
1312+1312+1412	4178	1,124	1,372	1,624
1312+1312+1512	4278	1,137	1,387	1,642
1412+1412+1412	4378	1,143	1,395	1,650
1312+1512+1512	4478	1,156	1,413	1,674
1412+1512+1512	4578	1,166	1,426	1,687
1110+1110+1110+1110	4612	1,316	1,597	1,883
1312+1612+1612	4678	1,178	1,442	1,713
1110+1110+1110+1210	4712	1,325	1,608	1,897
1512+1512+1612	4778	1,187	1,454	1,725
1110+1110+1110+1312	4814	1,351	1,642	1,941
1512+1612+1612	4878	1,199	1,468	1,744
1110+1110+1210+1312	4914	1,359	1,654	1,954
1612+1612+1612	4978	1,209	1,484	1,762

### ADDITIONAL SHELVING ANGLE

Overall length (mm)	Depth 500 mm		
	3 tier MCD	4 tier MCE	5 tier MCF
649	259	314	370
749	265	319	376
849	276	335	396
951	302	370	440
1051	311	381	452
1151	319	394	470
1251	330	405	484
1353	354	441	526
1453	364	451	541
1553	374	467	559
1653	386	481	578
1687	535	649	766
1755	411	516	622
1789	560	683	809
1891	588	718	851
1991	595	729	866
2091	604	741	880
2191	614	754	897
2293	642	789	940
2391	631	779	927
2491	643	790	941
2593	666	826	986
2695	691	860	1,028
2793	686	850	1,018
2895	714	886	1,061
2995	721	897	1,075
3095	733	912	1,092
3131	898	1,100	1,306
3195	744	926	1,112
3231	908	1,117	1,327
3295	756	941	1,128
3331	918	1,126	1,341
3397	781	976	1,173
3431	926	1,139	1,354
3499	806	1,010	1,216
3531	937	1,153	1,372
3633	962	1,187	1,415
3731	954	1,175	1,399
3771	1,157	1,415	1,678
3835	997	1,233	1,471
3871	1,167	1,428	1,692
3935	1,005	1,243	1,486
4037	1,032	1,279	1,527
4137	1,041	1,290	1,544
4237	1,052	1,305	1,560
4337	1,059	1,313	1,571
4437	1,071	1,331	1,593
4537	1,080	1,342	1,608
4571	1,232	1,515	1,801
4637	1,094	1,360	1,632
4671	1,240	1,524	1,817
4737	1,104	1,372	1,645
4773	1,267	1,559	1,860
4837	1,114	1,387	1,664
4873	1,275	1,573	1,873
4937	1,124	1,401	1,682





## ACCESSORIES



123 014



800 711



500 817



500 813



118 728



120 797



Separation

Rear protection bar



230 653

Description	Reference	Price
Corner unit	<u>123 014</u>	<b>£4</b>
Supplementary studs (each)	800 711	<b>£6</b>
1/1 GN pan holder with tray runners (34 mm height gap between)	500 817	<b>£216</b>
Hook-on label - holder	500 813	<b>£22</b>
Floor fixing plate	118 728	<b>£8</b>
Wall fixing plate	120 797	<b>£8</b>
Separation width 400 mm (per pair)	500 814	<b>£48</b>
Separation width 500 mm (per pair)	500 815	<b>£54</b>
Separation width 560 mm (per pair)	500 816	<b>£58</b>
Rear protection bar, 808 mm long	500 783	<b>£49</b>
Rear protection bar, 910 mm long	500 784	<b>£52</b>
Rear protection bar, 1010 mm long	500 785	<b>£54</b>
Rear protection bar, 1110 mm long	500 786	<b>£55</b>
Rear protection bar, 1210 mm long	500 787	<b>£57</b>
Rear protection bar, 1312 mm long	500 788	<b>£58</b>
Rear protection bar, 1412 mm long	500 789	<b>£59</b>
Rear protection bar, 1512 mm long	500 790	<b>£59</b>
Rear protection bar, 1612 mm long	500 791	<b>£63</b>
Rear protection bar, 1714 mm long	500 792	<b>£63</b>
Polypropylene grids W 380 x L 300 mm	<u>230 643</u>	<b>£14</b>
Polypropylene grids W 380 x L 400 mm	<u>230 644</u>	<b>£18</b>
Polypropylene grids W 480 x L 300 mm	<u>230 653</u>	<b>£18</b>
Polypropylene grids W 480 x L 400 mm	<u>230 654</u>	<b>£18</b>
Polypropylene grids W 550 x L 300 mm	<u>230 663</u>	<b>£18</b>
Polypropylene grids W 550 x L 400 mm	<u>230 664</u>	<b>£24</b>

## PALLETS

Stackable polyethylene pallets, food quality. Maximum load (static): 4 tons (reference 806 105), 500 kg (reference 806 106).



806 106

Description	Overall dimensions W x L (mm)	Reference	Price
Polyethylene pallet, grey flat base	1200 x 800	806 105	<b>£272</b>
Polyethylene pallet, black slatted base	1200 x 800	806 106	<b>£70</b>



## SHELVING - POLYPROPYLENE SHELVES



Angled run



Straight run



## Wide choice :

manual, electronic soap dispenser, soap pump.



## Ergonomics and sustainable development :

tap with infra red detection cell made in France. Reduced water consumption thanks to immediate stop of flow on removal of hands.



Also available with knee-operated tap



## Easier installation :

thanks to the fixing strip at the rear of the splash-back



## Hygienic :

oversized basin (350 x 275 mm, depth 80 mm).



## Eye-catching :

one-piece. The basin, lip and backplash assembly is made in one piece. Streamlined design.



## Insert bin :

This recess allows straightforward installation of the wash basin, regardless of the room taken up by the water inlet and evacuation pipe.



## Complete kit :

comes as standard with nail brush, bin, electronic tap, connection hoses, sink pipe trap and wall bracket.



Scan here for documentation



Hand wash basins - Sterilizing cabinets - Insect killers - Dustbins...





# TS 2000N HAND WASH BASINS (W.R.A.S. APPROVED)



806 301



**Reduced water consumption,**  
only 3 litres per minute

Food quality stainless steel construction monobloc. Hand wash basins supplied with nailbrush and bin under the basin for the disposal of used hand towels. Well 350 x 275 mm, depth 80 mm. Mixer tap with non-return valves and temperature setting. Supplied with 2 flexible hoses, trap and wall fixing support. The bin includes a recess at the back for easy installation. NF-Hygiene Certified.

## TS 2000N WITH ELECTRONIC CONTROL

Electronically controlled mixer tap, made in France, triggered by infra red detection cell. Automatic opening and closing of tap immediately after hands are placed in front of or removed from the cell, without timer for water saving. The tap also has an aerator giving a softer stream of water which also reduces water consumption.

## Battery-operated TS 2000N

Wash basin supplied with CR-P2, 6 volt batteries, service life: 350,000 presses, 3 years



Description	Overall dim. l x W x h(mm)	Reference	Price
TS 2000N with electronic control	400 x 400 x 755	806 301	£949
TS 2000N with electronic control + manual soap dispenser (500 ml)	400 x 400 x 755	<u>806 302</u>	£1,003
TS 2000N with electronic control + integrated soap dispenser (500 ml)	400 x 400 x 755	<u>806 304</u>	£1,060

6 volt battery - Ref: 262 620 - Price.: £44

## Mains supply TS 2000N

Wash basin with transformer for mains connection (230 V single phase).

Description	Overall dim. l x W x h(mm)	Reference	Price
TS 2000N with electronic control + transformer	400 x 400 x 755	806291UK	£1,188
TS 2000N with electronic control with manual soap dispenser (500 ml) + transformer	400 x 400 x 755	806292UK	£1,240
TS 2000N with electronic control with integrated soap dispenser (500 ml) + transformer	400 x 400 x 755	806294UK	£1,297



806 302



806 304



## TS 2000N KNEE-OPERATED

Push button with oversized control paddle, positioned on front panel.

Description	Overall Dim. l x W x h(mm)	Reference	Price
TS 2000N knee-operated	400 x 440 x 755	806 321	<b>£594</b>
TS 2000N knee-operated + manual soap dispenser (500 ml)	400 x 440 x 755	806 322	<b>£651</b>
TS 2000N knee-operated + integrated soap dispenser (500 ml)	400 x 440 x 755	806 324	<b>£662</b>



806 321



806 322



806 324

## TS 2000N : EASIER INSTALLATION



### Easy fitting :

Thanks to the screw fixed wall mounting bracket which locates the bowl. Taps can be assembled before the bowl is installed.

This recess allows straightforward installation of the wash basin, regardless of the room taken up by the water inlet and evacuation pipes at the rear.







## G.A. WASH HAND BOWLS (KNEE OPERATED)

W.R.A.S. approved, stainless steel construction. Well Ø 275 mm, depth 115 mm. Knee-operated control. Mixer tap with non-return valve and temperature setting. Supplied with siphon and flexible connecting hose for connection of mitigated water to swan neck. Soap dispenser 500 ml.



"GA" hand wash bowl	Overall dim. l x W x h (mm)	Reference	Price
Without upstand	330 x 330 x 170	<u>806 331</u>	£240
With upstand	350 x 330 x 500	<u>806 332</u>	£258
With upstand and soap dispenser	350 x 330 x 500	<u>806 333</u>	£313

## G.C. WASH HAND BASINS (KNEE OPERATED)

W.R.A.S. approved, stainless steel construction. Well 345 x 245 mm, depth 120 mm. Mixer tap with non-return valves and temperature setting. Supplied with siphon and flexible connecting hose for connection of mitigated water to swan neck. Soap dispenser 500 ml.



### G.C. wash hand basin (knee operated)

Operated by push button behind control paddle on front.



"GC" hand wash-basin	Overall dim. l x W x h (mm)	Reference	Price
Without upstand	415 x 310 x 185	<u>806 381</u>	£264
With upstand height 540 mm	440 x 335 x 540	<u>806 382</u>	£309
With upstand height 540 mm and soap dispenser	440 x 335 x 540	<u>806 383</u>	£367
With upstand height 540 mm + soap dispenser and <b>stainless steel bin</b>	440 x 335 x 985	<u>806 397</u>	£535
With upstand height 790 mm	440 x 335 x 790	<u>806 384</u>	£325
With upstand height 790 mm, soap dispenser and paper towel dispenser	440 x 335 x 790	<u>806 385</u>	£446

### G.C. wash hand basin (electronic control)

Mixer tap, made in France, tripped by infrared detection cell.



"GC" hand wash-basin	Overall Dim. l x W x h (mm)	Reference	Price
Without upstand	415 x 310 x 185	<u>806 351</u>	£705
With upstand height 540 mm	440 x 335 x 540	<u>806 352</u>	£746
With upstand height 540 mm and soap dispenser	440 x 335 x 540	<u>806 353</u>	£802





# MOBILE WASH HAND BASINS (FOOT OPERATED)

Stainless steel construction. 2 fixed wheels and handle for easy moving.

Basin 345 x 245 mm, depth 115 mm. Foot control. 2 cans of 13 litres (one for clear water, one for waste water). Supplied with manual soap dispenser 500 ml, paper towel dispenser (one towel roll Ø 120 mm, length 208 mm, supplied), hook-on dustbin.

**Mobile foot operated wash hand basin, ref. 806 517:** electric foot pump powered by 2 batteries 6 V supplied.

**Mobile foot operated wash hand basin with built-in-water heater, ref. 806 519:** integrated electric water heater for instant hot water production. Selection button for continuous adjustment of cold water to hot water and vice versa (up to 45°C). Supplied with 230 V 16 amp connection. Power rating 3.7 kW. Operational stop facility to protect the water heater when there is no water in the jerrycan.



806 517



806 519



Description	Overall Dim. l x W x h (mm)	Reference	Price
Mobile foot operated wash hand basin	415 x 345 x 1200	806 517	£1,003
Mobile foot operated wash hand basin with built-in water heater	415 x 345 x 1200	806 519	£2,679

# JANITOR SINK STATIONS

The Tournus s/steel mop and bucket station is available either 600 or 700 mm deep, to suit differing mop bucket sizes.

The top tier features a formed steel basin and plug for mop rinsing, with a lower sink area for locating the bucket, whilst filling or emptying.

The lower sink area has a removable perforated steel trivet stand to locate the bucket on. Both zones can be filled from the swivel neck mono-bloc mixer tap. They are supplied with PVC basin trap and strainer waste overflow tube.



806 536

Description	Overall Dim. l x W x h (mm)	Reference	Price
Janitor sink (600mm wide)	500 x 600 x 890	<u>806 536</u>	£843
Janitor sink (700mm wide)	500 x 700 x 890	806 537	£1,348



# ACCESSORIES FOR TS 2000N / G.A. AND G.C. WASH HAND BASINS & BOWLS



806 396



806 395



230 552



230 553



230 554



230 469



806 314



806 350

Description	Overall dim. l x W x h (mm)	Reference	Price
Stainless steel wall dustbin	290 x 200 x 300	806 395	<b>£94</b>
Plastic wall dustbin	250 x 200 x 400	806 396	<b>£45</b>
Paper towel dispenser, capacity 250 towels (1)	280 x 130 x 370	230 552	<b>£64</b>
Box of 3000 towels, 30 packets of 100	300 x 290 x 145	230 398	<b>£161</b>
Paper towel dispenser for rolls Ø 120 mm	140 x 155 x 290	230 553	<b>£64</b>
Box of 12 paper towel rolls Ø 120 mm	h = 210	806 362	<b>£157</b>
Paper towel dispenser for rolls Ø 170 mm	210 x 220 x 320	230 554	<b>£95</b>
Box of 6 paper towel rolls Ø 170 mm	h = 195	806 364	<b>£122</b>
Nails brush on support		806 314	<b>£12</b>
Soap dispenser 500 ml	95 x 95 x 165	<u>230 469</u>	<b>£62</b>
Extra-cost for plug and brass tap + brass siphon		230 234	<b>£58</b>
Mixer tap with electronic control, flow rate 3l/mn		<u>230 507</u>	<b>£517</b>
<b>Knee-control kit:</b> control by rod + swan neck, flexible tube. Enables conversion an existing basin.		806 350	<b>£598</b>

(1) Attached to the upstand height 790 mm or the wall





# STERILIZING CABINETS

Stainless steel construction, rounded edges, transparent Plexiglass doors, stainless steel hinge, magnetic lock. Sloping top and bottom, interior support bar. Control button to outside of cabinet. Timer adjustable from 0 to 2 h. U.V. tube with automatic U.V. radiation cut-off system when door is opened. Index of protection IP 24. Voltage 230 V.



806 421



806 422



806 423



Looking door shown



806 424

**TOURNUS**  
EQUIPEMENT

**CED**

Description	Overall dim. l x W x h (mm)	Without key		With key	
		Ref.	Price	Ref.	Price
Lockable 1 door, 20 knife sterilizing cabinet (storage in folded slotted steel grid)	575 x 170 x 600	806421UK	<b>£573</b>	816421AS	<b>£630</b>
Lockable 1 door, 10 knife sterilizing cabinet (storage on magnetized bar)	575 x 170 x 600	806422UK	<b>£591</b>	816422AS	<b>£651</b>
Lockable 1 door, 20 knife sterilizing cabinet (storage in s/steel wire bar frame)	575 x 170 x 600	806423UK	<b>£620</b>	816423AS	<b>£672</b>
Lockable 2 door, 40 knife sterilizing cabinet (storage in s/steel wire bar frame)	1030 x 170 x 600	806424UK	<b>£1,003</b>	816424AS	<b>£1,088</b>

## UV tubes

Description	Reference	Price
Tube 15 W, length 440 mm for 575 mm (L) sterilizing cabinet	262 170	<b>£29</b>
Tube 30 W, length 900 mm for 1030 mm (L) sterilizing cabinet	262 172	<b>£44</b>





# INSECT-KILLERS

For the destruction of flying insects in kitchen or food shops. Stainless steel construction. Inside grid high voltage and exterior protection grid in stainless steel wires. Stainless steel drawer. Attractive actinic blue light tubes U.V. long lasting effectiveness (1 year).

Power cord length 1.20 m. Voltage 230 Volts, 50 - 60 Hz.



806 952

## Wall-mounted insect-killers (electronic control)

Wall-mounted insect-killers	Protected area	Overall dim. l x W x h (mm)	Reference	Price
<b>40 W</b> (1 tube of 40 W)	50 m2	615 x 95 x 240	806952AS	<b>305</b>



806 945

## Hanging insect-killers (electronic control)

Hanging insect-killers	Protected area	Overall dim. l x W x h (mm)	Reference	Price
<b>15 W</b> (1 tube of 15 W)	40 m2	460 x 95 x 235	806941AS	<b>£309</b>
<b>30 W</b> (2 tubes of 15 W)	80 m2	460 x 110 x 285	806943AS	<b>£352</b>
<b>40 W</b> (2 tubes of 20 W)	90 m2	615 x 110 x 330	806945AS	<b>£411</b>
<b>80 W</b> (2 tubes of 40 W)	180 m2	615 x 110 x 330	806947AS	<b>£446</b>

## Accessories for insect-killers

Description	Overall dim. (mm)	Reference	Price
Actinic tube U.V. 15 W long lasting effectiveness	L = 440	229 800	<b>£10</b>
Actinic tube U.V. 20 W long lasting effectiveness	L = 590	229 801	<b>£16</b>
Actinic tube U.V. 40 W long lasting effectiveness	L = 590	229 802	<b>£14</b>
<b>Pack of 12</b> actinic tubes U.V. 15 W long lasting effectiveness		806 976	<b>£116</b>
<b>Pack of 12</b> actinic tubes U.V. 20 W long lasting effectiveness		806 977	<b>£181</b>
<b>Pack of 12</b> actinic tubes U.V. 40 W long lasting effectiveness		806 978	<b>£192</b>



229 802



# GLUE TYPE INSECT-KILLERS

For the destruction of flying insects in kitchen or food shops. Stainless steel construction, exterior grid in stainless steel wires. Glue boards (1 board on wall-mounted model, 2 boards on hanging model) positioned on central part, near attractive actinic U.V. tubes with long lasting effectiveness (1 year).

**An effective insect destruction system**, for all flying insects even the smallest. Power cord length 1,20 m. Voltage 230 Volts, 50 Hz.



806 960

Glue insect-killer	Protected area	Overall dim. l x W x h (mm)	Reference	Price
Wall-mounted <b>40 W</b> (1 tube of 40 W)	50 m <sup>2</sup>	615 x 142 x 285	806960AS	<b>£245</b>
Hanging <b>80 W</b> (2 tubes of 40 W)	180 m <sup>2</sup>	615 x 97 x 285	806967AS	<b>£367</b>



807 080

## Accessories for insect-killers

Description	Overall dim. (mm)	Reference	Price
Pack of 6 glue boards for insect-killers 40 W and 80 W		807 080	<b>£27</b>



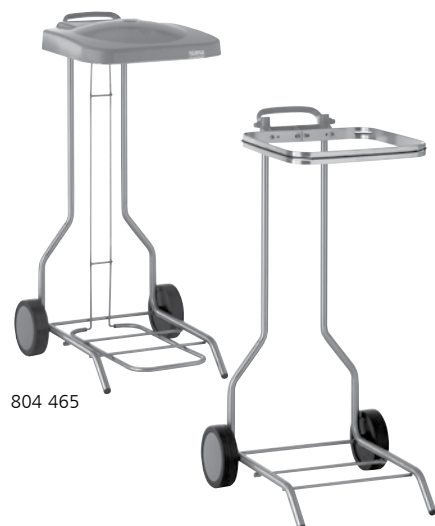


# WASTE BAG HOLDERS & BINS

## Mobile bag holder features

Made of stainless steel 20 mm diameter tubing.. Very rigid bag support consisting of a 4 mm stainless steel flat bar and an elastic strap bag fixing system. Strong and reliable lid opening system consisting of a stainless steel pedal connected to a double stainless steel rod. Injection moulded polypropylene lid, rigid and silent in operation. 2 smooth wheels Ø 150 mm. Generously-sized manoeuvring handle. Rigid stainless steel surround with hinged door and latch.

Description	For bags (litres)	Height (mm)	Overall dim. l x W (mm)	Reference	Price
130L open frame bag holder (pedal lid)	100 - 130	900	450 x 535	804 465	£261
100L open frame bag holder (pedal lid)	50 - 100	700	450 x 535	804 464	£261
100L bag holder (pedal lid + steel surround)	100	900	450 x 535	804 468	£470
70L bag holder (pedal lid + steel surround)	70	700	450 x 535	804 467	£443
100L open frame bag holder (open neck)	50 - 100	800	450 x 505	804 460	£198



## Waste bag holders (pedal clip)

Stainless steel construction. 2 swivel wheels Ø 80 mm. 2 feet made of stainless steel tube with non-slip rubber pads to the front. Stainless steel base to support the bag. Clip consisting of 2 stainless steel plates covered in rubber. Pedal operated opening.

Description	For bags (litres)	Height (mm)	Overall dim. l x W (mm)	Reference	Price
100L waste bag holders (pedal clip)	100	810	450 x 535	804 452	£309
110L waste bag holders (pedal clip)	110	970	450 x 535	804 453	£317

Description	Reference	Price
<b>FOR MOBILE BAG HOLDERS</b>		
Open frame bag holder, bag support tray	118 845	£57
For sorting waste: 5 colours segregated waste labels	296 298	£25
<b>FOR MOBILE BAG HOLDERS WITHOUT SURROUND AND BAG HOLDERS WITH CLIP</b>		
Roll holder Ø 100 mm, height 250 mm (2)	804 476	£167

- (1) : Don't fit for bag holders with surround.  
(2) : Supplied with elastic strap bag fixing system





804 395

## Snack bar bin (hinged waste flap)

Waste bin for snack and fast food. Stainless steel construction. Top of unit fitted to take trays. Waste flap. Mobile stainless steel front with base at rear and very rigid flat surface 4 mm thick to hold bag. This device is designed for easy fitting and removal of the bag, held by an elastic strap.

Description	Capacity (litres)	Height (mm)	Overall dim l x W (mm)	Reference	Price
Snack bar bin (hinged waste flap)	110	1236	444 x 480	804 395	£1,809



804 405

## Cylindrical bin (pedal lid)

Stainless steel construction. Lid with pedal. 2 swivel wheels.

Description	Capacity (litres)	Height (mm)	Ø (mm)	Reference	Price
Cylindrical bin (pedal lid)	50	610	370	804 405	£386
Cylindrical bin (pedal lid)	100	720	450	804 407	£443



906 505

## Waste bin for fat and bones

Stainless steel construction. Open-ended cylinder, and an independant wheeled base. Lid with hook. 4 swivel wheels.

Description	Ø x H (mm)	Reference	Price
Waste bin for fat and bones, capacity 100 litres	470 x 755	906 505	£467

## Sanitary containers

Polyethylene body and lid + padlock. Capacity 60 litres.

Description	Ø x H (mm)	Reference	Price
"Seizure" sanitary container	400 x 650	804 426	£183
Sanitary container for SRM (specified risk materials)	400 x 650	804 425	£180
Mobile circular, wheel-base for sanitary container	425 x 125	906 519	£180



804 425



804 426



906 519

# FLOOR DRAINS



## Easy installation:

small footprint, wide range to meet the needs of every installation, outlet Ø 100 mm.

## Compliance with standards:

- Depth of water 60 mm
- Grating 19 x 19 mm

## Hygienic:

- Capacity: 4 litres/second
- Removable trap
- Scrap bucket

## Safety:

Seamless press-drawn housing. Equipotential connections.

## Also exist:

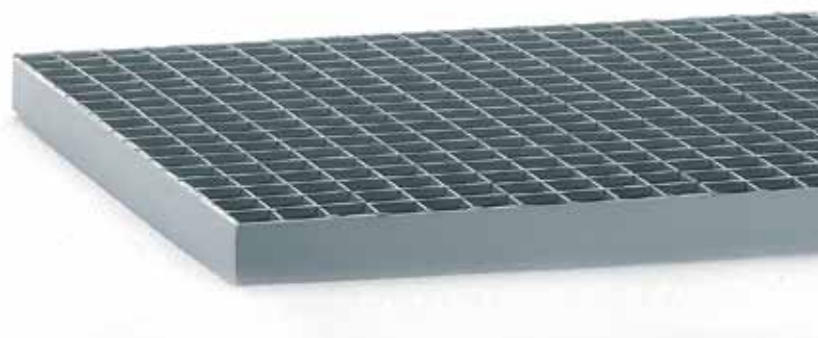
floor drain 250 x 250 mm with vertical outlet

## FOR ALL DIMENSION IN STANDARD

- Stainless steel grating Caillebotis inox
- Stainless steel and non-slip grating
- Galvanised grating



Flash on our documentation !









# FLOOR SIPHONS

Stainless steel construction. Grate Ø 175 mm. Stamped basin with removable bell and pan. Water trap: 60 mm.

Flow: 2 litres/ second. Max. load: 300 kg (siphons with 2 mm grate), 5 tons. (siphons with 8 mm grate). Separate waste basket. Removable shelf.

Description	Reference	Price
Siphons for tiled floors with removable frame, thick grid 2 mm	802 422	£361
Siphons for tiled floors with removable frame, thick grid 8 mm	802 432	£410
Siphons for tiled floors without removable frame, thick grid 2 mm	802 472	£235
Siphons for tiled floors without removable frame, thick grid 8 mm	802 482	£297
Siphons for tiled floors with removable frame, thick grid 2 mm With inviolability screw	812 422	£394
Siphons for tiled floors with removable frame, thick grid 8 mm With anti-tamper screw	812 432	£443

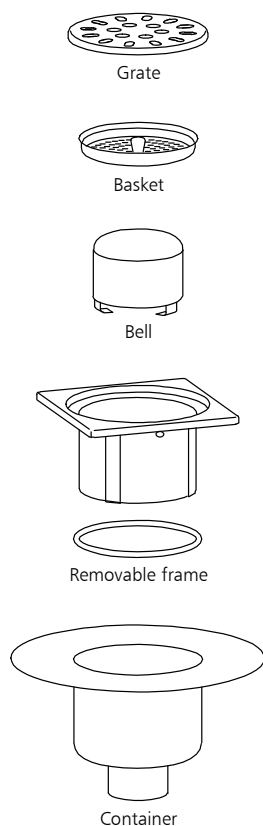
## FITTING

- Reserved recess Ø 170 mm
- Trap connection to Ø 75 mm pipe
- Floor slab sealing, with properly executed lapping into the bowl (1)  
screed application, height adjustment, levelling and sealing  
of frame or casing (2)
- Tiling covering laying or application of resin

(1): Take care: in the case of siphons for tiled floors that have no adjustable frame: the lack of frame means it is not possible to seal the floor slab using lapping into the bowl. The siphons must not be installed in damp premises nor elsewhere than on ground floors.

(2): The siphons with adjustable frame also allow adjustment for height, rotation and slope.

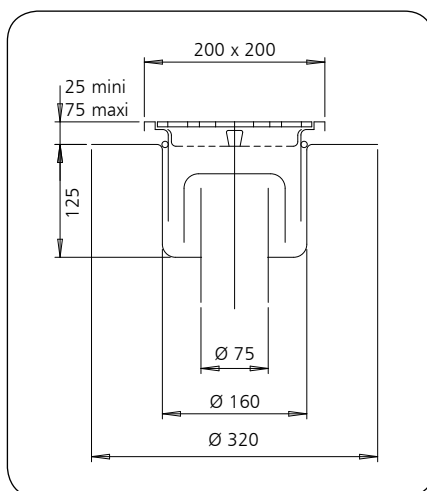




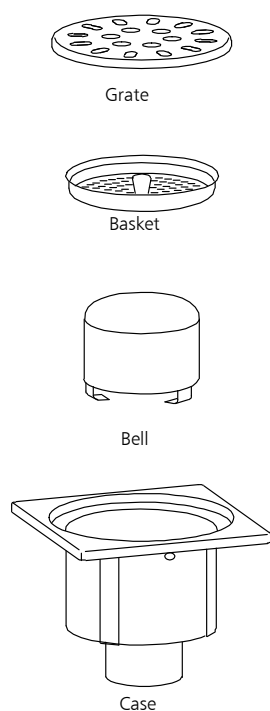
**Tiled floors with removable frame**

## TRAPS WITH ADJUSTABLE FRAME

They allow for waterproofing can be created with overlaps into the body prior to laying the tiles or floor covering. Traps with adjustable flanges can also be adjusted for height, rotation and angle.



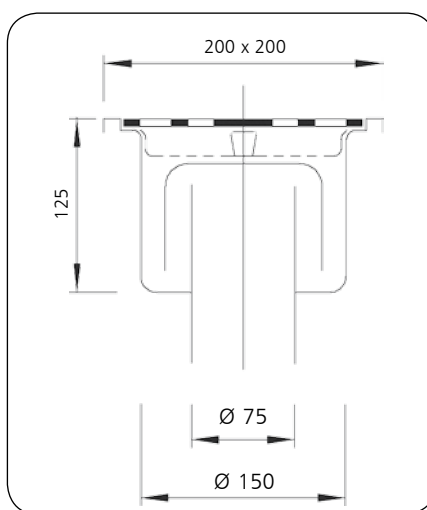
802 422



**Tiled floors without removable frame**

## TRAPS WITHOUT ADJUSTABLE FRAME

As there is no flange, it is not possible to create the waterproofing with overlaps into the casing when there is tiling or a resin floor covering. These traps must not be installed on an upper floor.



802 472



# FLOOR DRAINS



Security



EASY INSTALLATION



Safety

Non-slip grating

Hygienic

## LARGE RANGE

The range includes **280 models for use in canteen, restaurant kitchens and supermarkets** for tiles or resin floor coverings (dimensions 250 x 250 mm to 1500 x 500 mm). The floor drains with width 250 mm are designed to be positioned in corridors in front of elevators and doorways of premises.

## EASY INSTALLATION

No recess is required in the concrete slab flooring to install vertical drain systems.

A reserved hole or core drilling of Ø 225 mm suffices.

**Outlet Ø 100 mm:** this allows for easy connection to the type of piping used most often.

## SECURITY

Tournus pays great attention to the design and manufacture of its products in order to be able to guarantee durable use under the best possible conditions.

## Durability with time

- Stainless steel AISI 304 construction.
- The trap housing is **press-drawn**, with **no weld** in the area of the water trap.
- The mesh size of the gratings is 19 x 19 mm, for easy passage of trolleys.

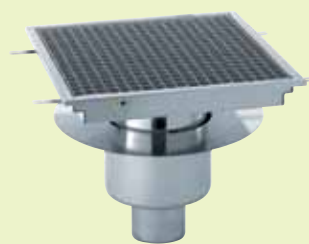
## High throughput

- 4 litres per second.

## Hygiene

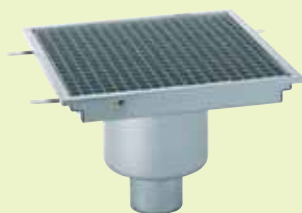
- The depth of **water is 60 mm**.
- Outlet includes cross frame to trap scrap waste.
- Choice of either stainless steel or galvanised, can be cleaned in a sink.

# LARGE RANGE OF FLOOR DRAINS



## Floor drains with adjustable bowl outlet

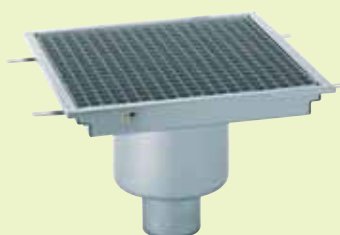
The drain system creates waterproofing of the slab with overlaps into the casing prior to applying the screed. The body can be moved in all directions.



## Floor drains with single-piece bowl

Simplified model for installation without any need for re-waterproofing.

## Floor drains with vertical outlet



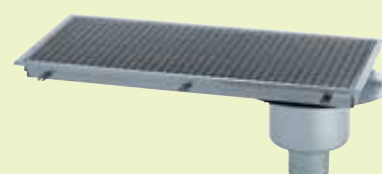
The removable funnel-type trap makes cleaning of the whole drain easier.

## Floor drains with horizontal outlet



Shallower, thanks to the lateral discharge.

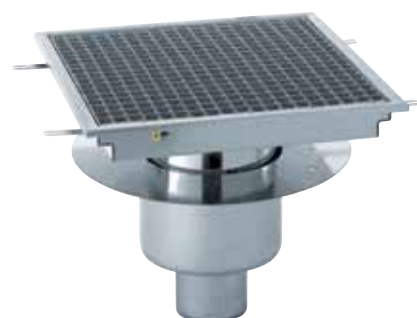
## Floor drains with off-centre outlet



To facilitate installation when an appliance which is difficult to move is to be installed over the drain.

## FLOOR DRAINS 250 x 250 MM

### WITH VERTICAL OUTLET



### Central outlet with adjustable bowl

Dim. W x L (mm)	With stainless steel grating		With stainless steel and NON-SLIP grating	
	Ref.	Price	Ref.	Price
250 x 250	506 980	£706	556 980	£717



### Central outlet with single-piece bowl

Dim. W x L (mm)	With stainless steel grating		With stainless steel and NON-SLIP grating	
	Ref.	Price	Ref.	Price
250 x 250	506 990	£630	556 990	£645



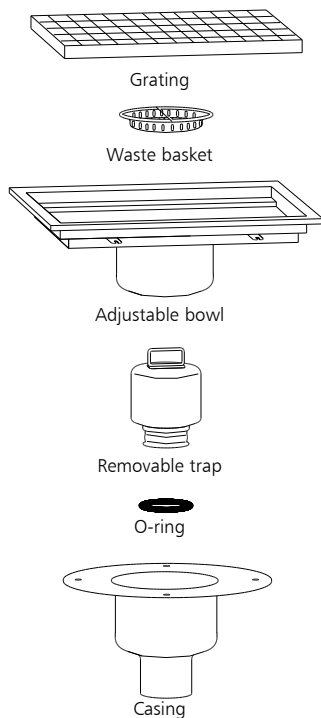
# FLOOR DRAINS WITH VERTICAL OUTLET



**Stainless steel construction** with stainless steel or galvanised grating, mesh size: 19 x 19 mm.  
Distributed load: 3 t/m<sup>2</sup>, concentrated load: 750 kg. Independent waste basket. Removable siphon with O-ring to make the cleaning easier, casing regulatory water height of 60 mm. The trap housing is press-drawn.  
Outlet Ø 100 mm, flow rate 4 litres/second.

**Floor drain with adjustable bowl:** the body supporting the grating is independent. This floor drain is suitable for a slab + tiling depth of 55 to 150 mm. Its means the slab waterproofing can be created with overlaps into the casing prior to laying the tiles.

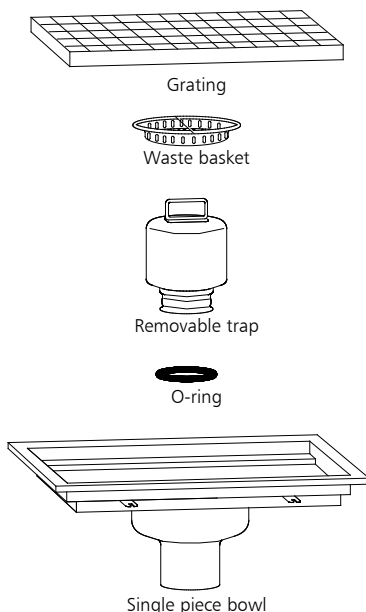
**Floor drain with single-piece bowl:** the grating is set into the upper rim of the body. With this one-piece design, it is not possible to create the slab waterproofing with overlaps into the casing.



## Central outlet with adjustable bowl

Dim. W x L (mm)	With stainless grating		with stainless and NON-SLIP GRATING		With galvanized grating	
	Ref	Price	Ref	Price	Ref	Price
250 x 1000	507 160	<b>£1,153</b>	557 160	<b>£1,148</b>	507 170	<b>£1,060</b>
250 x 1500	507 161	<b>£1,482</b>	557 161	<b>£1,550</b>	507 171	<b>£1,185</b>
250 x 2000	507 162	<b>£1,609</b>	557 162	<b>£1,603</b>	507 172	<b>£1,422</b>
250 x 2500	507 163	<b>£1,790</b>	557 163	<b>£1,853</b>	507 173	<b>£1,400</b>
300 x 300	507 000	<b>£689</b>	557 000	<b>£699</b>	507 010	<b>£626</b>
300 x 600	507 001	<b>£798</b>	557 001	<b>£802</b>	507 011	<b>£715</b>
300 x 900	507 002	<b>£992</b>	557 002	<b>£1,011</b>	507 012	<b>£788</b>
400 x 400	507 003	<b>£746</b>	557 003	<b>£834</b>	507 013	<b>£662</b>
400 x 800	507 004	<b>£900</b>	557 004	<b>£915</b>	507 014	<b>£746</b>
400 x 1200	507 005	<b>£1,211</b>	557 005	<b>£1,471</b>	507 015	<b>£955</b>
500 x 500	507 006	<b>£834</b>	557 006	<b>£1,035</b>	507 016	<b>£719</b>
500 x 1000	507 007	<b>£1,039</b>	557 007	<b>£1,076</b>	507 017	<b>£857</b>
500 x 1500	507 008	<b>£1,514</b>	557 008	<b>£1,598</b>	507 018	<b>£1,172</b>

## Central outlet with single-piece bowl

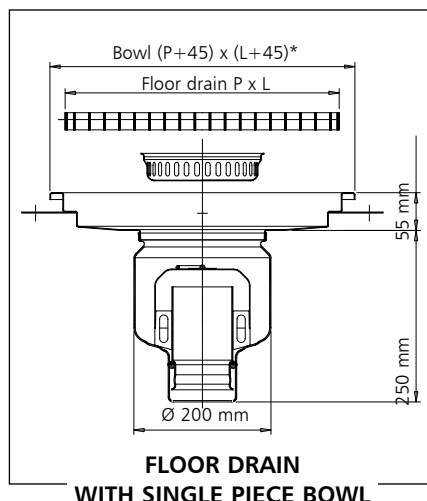
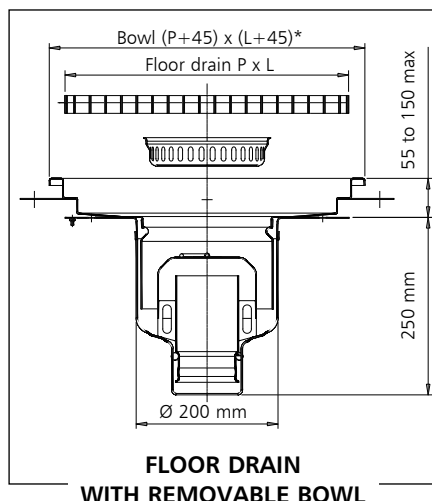


Dim. W x L (mm)	With stainless grating		With stainless and NON-SLIP GRATING		With galvanized grating	
	Ref	Price	Ref	Price	Ref	Price
250 x 1000	507 200	<b>£1,064</b>	557 200	<b>£1,060</b>	507 210	<b>£967</b>
250 x 1500	507 201	<b>£1,371</b>	557 201	<b>£1,439</b>	507 211	<b>£1,205</b>
250 x 2000	507 202	<b>£1,523</b>	557 202	<b>£1,570</b>	507 212	<b>£1,337</b>
250 x 2500	507 203	<b>£1,721</b>	557 203	<b>£1,786</b>	507 213	<b>£1,337</b>
300 x 300	507 040	<b>£588</b>	557 040	<b>£594</b>	507 050	<b>£521</b>
300 x 600	507 041	<b>£679</b>	557 041	<b>£683</b>	507 051	<b>£594</b>
300 x 900	507 042	<b>£943</b>	557 042	<b>£963</b>	507 052	<b>£740</b>
400 x 400	507 043	<b>£640</b>	557 043	<b>£722</b>	507 053	<b>£551</b>
400 x 800	507 044	<b>£791</b>	557 044	<b>£806</b>	507 054	<b>£640</b>
400 x 1200	507 045	<b>£1,100</b>	557 045	<b>£1,360</b>	507 055	<b>£840</b>
500 x 500	507 046	<b>£722</b>	557 046	<b>£927</b>	507 056	<b>£611</b>
500 x 1000	507 047	<b>£932</b>	557 047	<b>£967</b>	507 057	<b>£746</b>
500 x 1500	507 048	<b>£1,436</b>	557 048	<b>£1,521</b>	507 058	<b>£1,096</b>





# FLOOR DRAINS WITH VERTICAL OUTLET

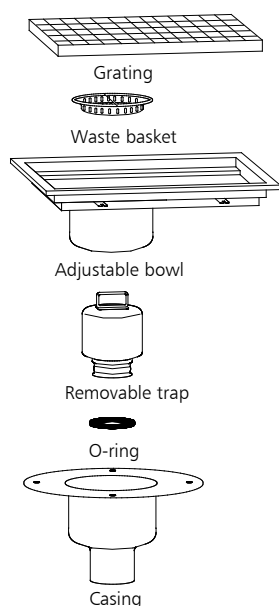


## Requirements to install vertical outlet drains:

Create pocket or core drill the slab to create a breaking through hole of Ø 225 mm.

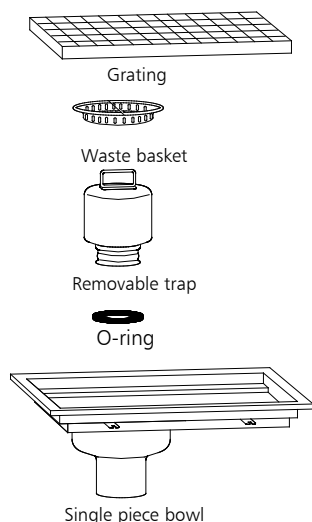
In the screed, allow the depth and length of the body plus 200 mm

(\*): L + 50 mm instead of L + 45 mm for floor drains 250 x 2000, 250 x 2500, 300 x 900, 400 x 1200, 500 x 1500 mm.



## Off-centre outlet with adjustable bowl

Dim. W x L (mm)	with stainless grating		with stainless and NON-SLIP GRATING		with galvanized grating	
	Ref	Price	Ref	Price	Ref	Price
250 x 1000	507 180	£1,243	557 180	£1,240	507 190	£1,153
250 x 1500	507 181	£1,482	557 181	£1,471	507 191	£1,377
250 x 2000	507 182	£1,673	557 182	£1,742	507 192	£1,292
250 x 2500	507 183	£1,891	557 183	£1,954	507 193	£1,501
300 x 600	507 021	£1,011	557 021	£1,021	507 031	£927
300 x 900	507 022	£1,348	557 022	£1,369	507 032	£1,144
400 x 800	507 024	£1,205	557 024	£1,222	507 034	£1,052
400 x 1200	507 025	£1,625	557 025	£1,886	507 035	£1,445
500 x 1000	507 027	£1,236	557 027	£1,268	507 037	£1,049
500 x 1500	507 028	£1,786	557 028	£2,392	507 038	£1,625



## Off-centre outlet with single piece bowl

Dim. P x L (mm)	With stainless grating		With stainless and NON-SLIP GRATING		With galvanized grating	
	Ref	Price	Ref	Price	Ref	Price
250 x 1000	507 220	£1,172	557 220	£1,169	507 230	£1,076
250 x 1500	507 221	£1,413	557 221	£1,408	507 231	£1,265
250 x 2000	507 222	£1,559	557 222	£1,628	507 232	£1,229
250 x 2500	507 223	£1,778	557 223	£1,842	507 233	£1,388
300 x 600	507 061	£923	557 061	£932	507 071	£839
300 x 900	507 062	£1,236	557 062	£1,258	507 072	£1,032
400 x 800	507 064	£1,105	557 064	£1,120	507 074	£952
400 x 1200	507 065	£1,534	557 065	£1,793	507 075	£1,277
500 x 1000	507 067	£1,144	557 067	£1,176	507 077	£955
500 x 1500	507 068	£1,714	557 068	£2,320	507 078	£1,374

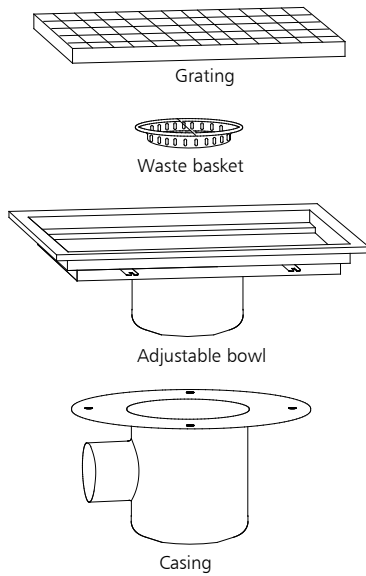


# FLOOR DRAINS WITH HORIZONTAL OUTLET

**Stainless steel construction** with stainless steel or galvanised grating, mesh size: 19 x 19 mm. Distributed load: 3 t/m<sup>2</sup>, concentrated load: 750 kg. Independent waste basket. Press-drawn floor drain casing regulatory water height of 60 mm. Outlet Ø 100 mm, flow rate 4 litres/second.

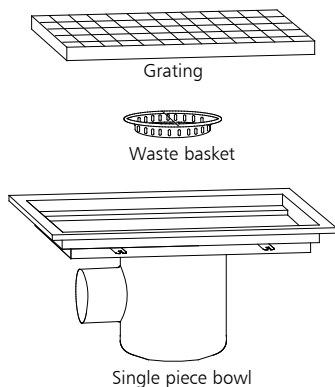
**Floor drain with adjustable bowl:** the body supporting the grating is independent, this floor drain is suitable for a slab + tiling depth of 55 to 150 mm. Its means the slab waterproofing can be created with overlaps into the casing prior to laying the tiles.

**Floor drain with single-piece bowl:** the grating is set into the upper rim of the body. With this one-piece design, it is not possible to create the slab waterproofing with overlaps into the casing.



## Central outlet with adjustable bowl

Dim. W x L (mm)	With stainless grating		With stainless and NON-SLIP GRATING		With galvanized grating	
	Ref.	Price	Ref.	Price	Ref.	Price
250 x 1000	507 240	£1,096	557 240	£1,096	507 250	£1,003
250 x 1500	507 241	£1,427	557 241	£1,494	507 251	£1,132
250 x 2000	507 242	£1,553	557 242	£1,550	507 252	£1,369
250 x 2500	507 243	£1,733	557 243	£1,797	507 253	£1,348
300 x 300	507 080	£640	557 080	£647	507 090	£570
300 x 600	507 081	£743	557 081	£750	507 091	£659
300 x 900	507 082	£935	557 082	£960	507 092	£735
400 x 400	507 083	£693	557 083	£779	507 093	£607
400 x 800	507 084	£844	557 084	£864	507 094	£693
400 x 1200	507 085	£1,159	557 085	£1,422	507 095	£900
500 x 500	507 086	£779	557 086	£981	507 096	£666
500 x 1000	507 087	£989	557 087	£1,021	507 097	£798
500 x 1500	507 088	£1,457	557 088	£2,062	507 098	£1,120

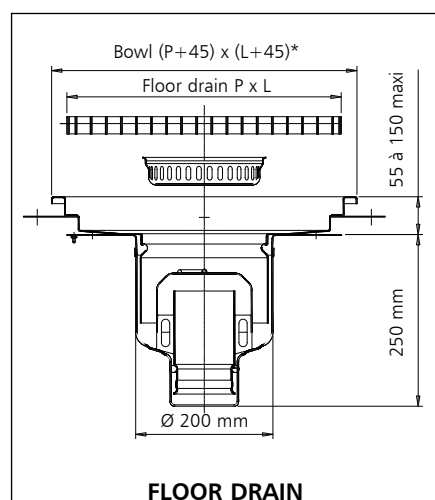


## Central outlet one single-piece bowl

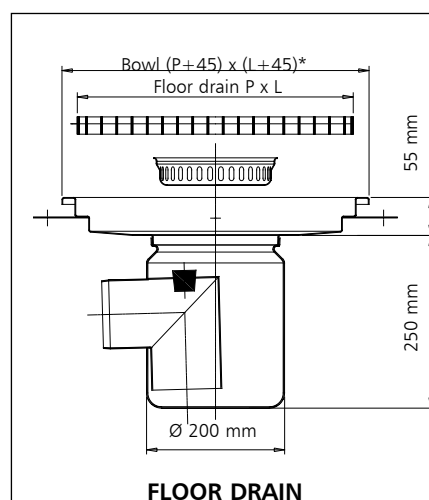
Dim. W x L (mm)	With stainless grating		With stainless and NON-SLIP GRATING		With galvanized grating	
	Ref.	Price	Ref.	Price	Ref.	Price
250 x 1000	507 280	£1,084	557 280	£1,084	507 290	£992
250 x 1500	507 281	£1,427	557 281	£1,494	507 291	£1,132
250 x 2000	507 282	£1,462	557 282	£1,457	507 292	£1,277
250 x 2500	507 283	£1,641	557 283	£1,706	507 293	£1,251
300 x 300	507 120	£548	557 120	£555	507 130	£479
300 x 600	507 121	£651	557 121	£659	507 131	£567
300 x 900	507 122	£871	557 122	£891	507 132	£666
400 x 400	507 123	£594	557 123	£679	507 133	£506
400 x 800	507 124	£746	557 124	£763	507 134	£594
400 x 1200	507 125	£1,049	557 125	£1,309	507 135	£791
500 x 500	507 126	£715	557 126	£915	507 136	£603
500 x 1000	507 127	£927	557 127	£960	507 137	£740
500 x 1500	507 128	£1,377	557 128	£1,983	507 138	£1,035



# FLOOR DRAINS WITH HORIZONTAL OUTLET



**FLOOR DRAIN  
WITH REMOVABLE BOWL**



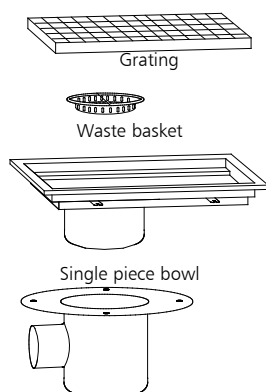
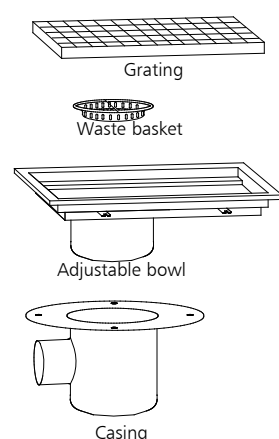
**FLOOR DRAIN  
WITH SINGLE PIECE BOWL**

## Requirements to install horizontal outlet drains:

Create pocket or core drill the slab to create a breaking through hole of diameter 400 mm, height 275 mm.

In the screed, allow for the depth and length of the body plus 200 mm

(\*): L + 50 mm instead of L + 45 mm for floor drains 250 x 2000, 250 x 2500, 300 x 900, 400 x 1200, 500 x 1500 mm.



## Off-centre outlet with adjustable bowl

Dim. W x L (mm)	With stainless grating		With stainless and NON-SLIP GRATING		With galvanized grating	
	Ref.	Price	Ref.	Price	Ref.	Price
250 x 1000	507 260	£1,188	557 260	£1,509	507 270	£1,096
250 x 1500	507 261	£1,427	557 261	£1,416	507 271	£1,325
250 x 2000	507 262	£1,617	557 262	£1,685	507 272	£1,236
250 x 2500	507 263	£1,833	557 263	£1,898	507 273	£1,445
300 x 600	507 101	£960	557 101	£967	507 111	£877
300 x 900	507 102	£1,292	557 102	£1,316	507 112	£1,091
400 x 800	507 104	£1,148	557 104	£1,169	507 114	£999
400 x 1200	507 105	£1,570	557 105	£1,830	507 115	£1,313
500 x 1000	507 107	£1,179	557 107	£1,215	507 117	£996
500 x 1500	507 108	£1,728	557 108	£2,335	507 118	£1,388

## Off-centre outlet with single-piece bowl

Dim. W x L (mm)	With stainless grating		With stainless and NON-SLIP GRATING		With galvanized grating	
	Ref.	Price	Ref.	Price	Ref.	Price
250 x 1000	507 310	£1,043	557 310	£1,039	507 320	£952
250 x 1500	507 311	£1,352	557 311	£1,348	507 321	£1,163
250 x 2000	507 312	£1,498	557 312	£1,564	507 322	£1,205
250 x 2500	507 313	£1,714	557 313	£1,781	507 323	£1,328
300 x 600	507 141	£844	557 141	£850	507 151	£759
300 x 900	507 142	£1,100	557 142	£1,196	507 152	£883
400 x 800	507 144	£1,021	557 144	£1,052	507 154	£839
400 x 1200	507 145	£1,172	557 145	£1,360	507 155	£970
500 x 1000	507 147	£1,032	557 147	£1,057	507 157	£834
500 x 1500	507 148	£1,550	557 148	£2,155	507 158	£1,208

## Extra-cost added to the price of floor drains

Floor drains 300 x 300, 400 x 400 et 500 x 500 mm with square gratings. Floor drains 300 x 900, 400 x 1200 & 500 x 1500 mm with 3 square gratings. Floors drains 300 x 600, 400 x 800 & 500 x 1000 mm with one rectangular grating. **It is possible to replace this rectangular grating by 2 square gratings.**



Grating

Description	Ref.	Price
2 stainless steel gratings 300 x 300 mm instead of one grating 300 x 600 mm	702 340	£42
2 stainless steel gratings 400 x 400 mm instead of one grating 400 x 800 mm	702 341	£42
2 stainless steel gratings 500 x 500 mm instead of one grating 500 x 1000 mm	702 342	£42



## BREAD MAKING UNITS

**Hygienic:**

Beech top to store pieces of dough or for natural proving in bread making.

**Ergonomical:**

Front door can be raised and stored under the work surface.

6 slide bar levels

## CATERING HIGH CUPBOARD

**Strength:**

Reinforced sliding doors, suspended from a rail fixed on the upper part, with stop-blocks.

**Modular:**

adjustable shelf

**Aesthetics :**

Flattened folds used throughout, on the front edge and shelves.







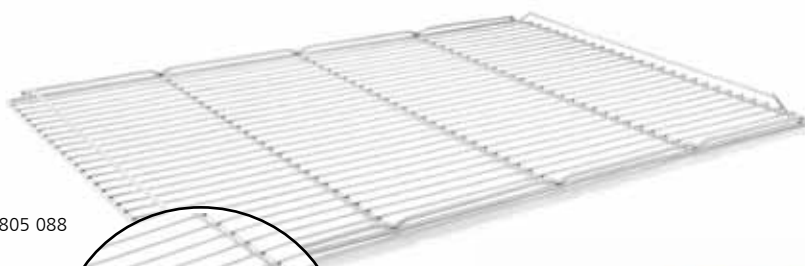
# BREAD MAKING UNITS

Stainless steel units, height 900 mm. Glued beech plywood top, 26 mm thick. Front door can be raised and stored under the work surface. 6 slide bar levels. 4 wheels Ø 125 mm with 2 brakes.

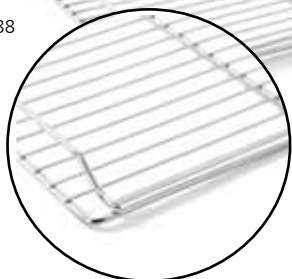


504 701

Description	Overall dim. L x P x H (mm)	Reference	Price
Bread making unit 800 x 600 mm	1025 x 800 x 900	504 700	£3,421
Bread making unit 900 x 700 mm	1025 x 800 x 900	504 701	£3,431
Stainless steel grids	800 x 600	805 087	£64
Stainless steel grids with reinforcements and stops	900 x 700	805 088	£97
Marine plywood	900 x 700 x 15	221 092	£248



805 088







## Wall shelves with racks

Stainless steel construction. Rack height: 1 tier 315 mm, 2 tier 700 mm, pitch 55 mm, fixed by screw. Adjustable trays, thickness 1.2 mm, rear upstand 50 mm high.

### WIDTH 290 MM



509 974

Overall dim. W x l (mm)	Shelf 1 tier		Shelf 2 tier	
	Reference	Price	Reference	Price
290 x 800	509 971	<b>£156</b>	509 986	<b>£293</b>
290 x 1000	509 972	<b>£159</b>	509 987	<b>£302</b>
290 x 1200	509 973	<b>£190</b>	509 988	<b>£358</b>
290 x 1400	509 974	<b>£190</b>	509 989	<b>£359</b>
290 x 1500	509 975	<b>£208</b>	509 990	<b>£412</b>
290 x 1600	509 976	<b>£217</b>	509 991	<b>£424</b>
290 x 1800	509 977	<b>£221</b>	509 992	<b>£414</b>
290 x 2000	509 978	<b>£215</b>	509 993	<b>£435</b>
290 x 2200	509 979	<b>£246</b>	509 994	<b>£479</b>

### WIDTH 390 MM



509 928

Overall dim. W x l (mm)	Shelf 1 tier		Shelf 2 tier	
	Reference	Price	Reference	Price
390 x 800	509 910	<b>£169</b>	509 925	<b>£302</b>
390 x 1000	509 911	<b>£172</b>	509 926	<b>£335</b>
390 x 1200	509 912	<b>£191</b>	509 927	<b>£347</b>
390 x 1400	509 913	<b>£191</b>	509 928	<b>£366</b>
390 x 1500	509 914	<b>£213</b>	509 929	<b>£406</b>
390 x 1600	509 915	<b>£213</b>	509 930	<b>£406</b>
390 x 1800	509 916	<b>£228</b>	509 931	<b>£437</b>
390 x 2000	509 917	<b>£229</b>	509 932	<b>£445</b>
390 x 2200	509 918	<b>£278</b>	509 933	<b>£526</b>

For other lengths: see price of the upper length.





## CATERING HIGH CUPBOARD

Stainless steel construction, height 1800 mm. Reinforced sliding doors, suspended from a rail fixed on the upper part, with stop-blocks. Horizontal top. 3 adjustable shelves. Polyamide leg with jacks (no exposed thread). Flattened folds used throughout on the front edge, shelves, handles and floor.



503 493

Description	Dimensions W x I (mm)	Reference	Price
High cupboard with sliding doors	600 x 1000	503 492	<b>£2,251</b>
High cupboard with sliding doors	600 x 1200	503 493	<b>£2,493</b>

Option: Lock for catering wall cabinets and catering units and catering high cupboard  
Ref.: 118 882 - Price **£39**

## CATERING CUPBOARD FOR CLEANING PRODUCTS

Stainless steel construction, height 1800 mm. Reinforced 1 or 2 hinged doors with key. Horizontal top. Vertical separation. 3 adjustable half shelves + 1 lower fixed shelf. Polyamide leg.



Description	Dimensions W x I (mm)	Reference	Price
Cupboard 1 door with vertical separation	500 x 600	503 481	<b>£1,514</b>
Cupboard 2 doors with vertical separation	500 x 1000	503 482	<b>£1,969</b>
Additional shelf 1 door		121 989	<b>£53</b>
Additional shelf 2 doors		121 990	<b>£62</b>







## 3 SITES

CED Fabrications Limited  
Units A1-A4, Falcon Court  
Clayton Business Park  
Clayton-le-Moors,  
Hyndburn, Lancashire  
BB5 5JD

CED Fabrications Ltd,  
Units 4 & 5,  
Nexus Industrial Estate,  
Randles Road, Knowsley  
Prescot, Merseyside  
L34 9HX

CED Fabrications Ltd  
Building 3  
Sandwich Industrial Estate  
Sandwich, Kent  
CT13 9LY



t: 01254 238 282  
f: 01254 238 228  
w: [www.cedfabsltd.co.uk](http://www.cedfabsltd.co.uk)  
e: [estimating@cedlimited.com](mailto:estimating@cedlimited.com)



# SALES LINES

## 01254 238 282

All prices exclude VAT - Free delivery applies to all orders over £350.  
All orders under £350 incur a £40 charge.  
Deliveries to UK mainland ONLY.

