



## TOURNUS EQUIPEMENT - PRICE LIST 2023

HOT HOLDING CABINETS · RACKING · GN TROLLEYS · PLUS MANY MORE

# CED & Tournus together better

Our recent merger with French catering equipment manufacturer Tournus, now enable CED to extensively increase our product range like never before, introducing many innovative quality products – all with short lead times and delivered direct to site, with other equipment currently supplied by CED.

The new partnership brings with it, more than 100 years' experience in commercial catering equipment design & manufacturing, supplied worldwide from our state of the art production facility in the Burgundy region of France.

CED & Tournus will continue to invent, invest and give our customers competitive quality catering solutions, for many years to come.

Howard Rishton  
Managing Director



# CONTENTS

## Roll'Service

- Hot holding banquet trolley with humidification control ..... p 8
- Hot holding banquet trolley without humidification control ..... p 9

## Trolleys

- Serving trolleys..... p 12
- Plate lowerators ..... p 14
- Glasses or tray dispenser trolleys ..... p 15
- Self-service trolleys ..... p 16
- Rack and tray dolleys ..... p 18
- GN Container storage trolleys ..... p 20

## Shelving

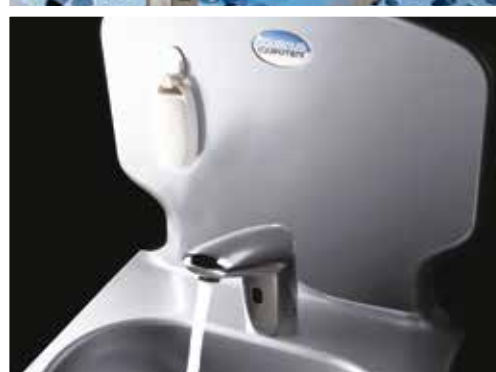
- Racking with removables shelves..... p 26
- Pallets ..... p 30

## Hygiene

- TS 2000N hand wash basins ..... p 34
- G.A. wash hand bowls..... p 36
- G.C. wash hand basins ..... p 36
- Mobile wash hand basins ..... p 37
- Janitor sink stations ..... p 37
- Sterilizing cabinets ..... p 39
- Waste bag holders & bins ..... p 40

## Others products

- Bread making units..... p 42
- Wall shelves ..... p 45
- Catering high cupboard ..... p 46





# Proof of commitment

## An industrial experience

- Company created in 1910
- Factory with a sheltered surface area of **22 000 m<sup>2</sup>**
- **3000 tons** of metal processed every year
- **5500 quotations** for complete installations per year
- 2 fully automated bender lines
- Workshops dedicated to special products
- 100 000 packages shipped every year



## NF-Food hygiene

The NF Food Hygiene certification stems from a voluntary initiative by manufacturers. This standard applies to equipment intended for mass catering and bakery-confectionery refrigerated equipment. This is an acknowledgement of the quality of the products, certified by AFNOR, a specialised body.

**It therefore contributes to the prevention of foodborne diseases and facilitates the setting up of an HACCP system with the emphasis on end user food safety.**



## NSF Mark

NSF International is an independent certification body committed to public health, safety and environmental protection. The NSF mark certifies that this product has been recognised as complying with the international food industry standards. Manufacturers undergo strict assessment, products are tested and factories spot-checked.



## CE Marking

The CE marking materialises the compliance of products with the requirements laid down to manufacturers by the European Union. It entitles products to free movement throughout the European Union and the right to be used therein.



## Tournus Equipement is a member of FCSI

Foodservice Consultants Society International (FCSI) is the respected, professional organization of men and women who offer design and management consulting services in the food service and the hospitality industry, around the world.



## Tournus Equipement is a member of CESA

The Catering equipment Supplier's Association (CESA) represents over 170 members who manufacture, distribute, service and maintain all types of commercial catering equipment from utensils to full kitchen schemes. These companies are backed by the CESA code of practice, which ensure buyers get the best equipment, advice, service and products for their needs. CESA also operates the Certified Foodservice Professionnel (CFSP) training programme to recognise and build the knowledge of individuals in the foodservice and catering equipment.

Members shall ensure that the products they offer for sale within the EU, will be CE Marked as required to confirm they comply with relevant European Directives.



## WRAS

The purpose of WRAS is to contribute to the protection of public health by preventing contamination of public water supplies and encouraging the efficient use of water by promoting and facilitating compliance with the Water Supply (Water Fittings) Regulations and Byelaws in Scotland. All our hand wash basin have the WRAS approval.

WRAS is a subscription membership company limited by guarantee and was incorporated on 4 August 2008. The subscribers of WRAS are the 26 UK Water Suppliers.



# Your interactive kitchen



You are in a restaurant kitchen,  
you want to find out information  
for product maintenance,  
you want to order a spare part,  
you want to be sure about the origin  
of the equipment.

**By scanning the label with your smartphone, you can have immediate access to the right information.**

## How does it work ?

- Download the application on your smartphone
- Scan the QR code with your phone
- Select the language used (French, English or German)
- Select the documents you require
- You have access to all the information in less than a minute

## The QR Code will provide you with...

- The product code and its description
- The production date and serial number of the product
- The name of the operator who manufactured it
- The technical manual of the product
- The list of components for after-sales service
- Advice for maintaining the product
- Information about recycling at the end of service life



# ROLL'SERVICE

HEATED TEMPERATURE HOLDING BANQUET TROLLEY



Condensate  
drip system\*

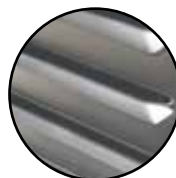


**Easy loading:**

270° door opening.

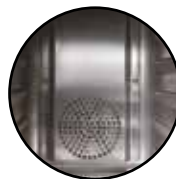
**Door stay system:**

easier loading



**Hygienic:**

curved surfaces and press-drawn sliders. Space between sliders: 71 mm.



**Optimum temperature**

**distribution:** centrifugal fan.



**Easy operation:**

removable, 2 litre condensate tank, front access. 24-hour operation.



**Easy access to functions and settings:**

temperature control (range from 60°C to 85°C), humidity control (35 % to 50 %), **IP 25**.



**2 Side handles** and one bar at rear for easy handling.



**Ergonomic:**

exclusive modern, oversized handle.



**Maintenance:**

easy access to technical parts.



**Easy handling:**

4 swivel wheels, 2 with brake.

**Non-marking shockproof**

**surround:** protection of the cabinet and its surroundings.

**Compact: small footprint**

- 1/1 GN: 528 x 821 mm
- 2/1 GN: 733 x 941 mm



Scan here for  
documentation

\* Condensate drip system not available  
for 5 level model

**TOURNUS**  
EQUIPEMENT









# ROLL'SERVICE

## HEATED TEMPERATURE HOLDING BANQUET TROLLEY

**Heated temperature holding banquet trolley.** Made of food quality stainless steel with rock wool insulated walls and door. Electronic control thermostat with digital display. Inside entirely radiused, with press-draw sliders and base. Space between sliders: 71 mm. Stainless steel or glazed door, with removable seal (opens 270°). Carrying handles on sides and rear guide bar.

Non-marking, shock-proof surround (5-level model fitted with corner bumpers). 4 braked wheels, 2 braked, Ø 160 mm stainless steel cover on 20 level 2/1 GN models, Ø 125 mm polyamide cover on 10 and 15 level 2/1 GN models, 10,15 and 20 level 1/1GN models, and Ø 80 mm wheels with stainless steel cover on 5 level models. Index of protection IP25, for low pressure cleaning. NF-Hygiene Certified.

**Electric heating system:** heating provided by a centrifugal fan to the rear, with external motor which circulates air through sealed stainless steel heating elements. Stainless steel internal air deflection system. Regulated temperature at 85°C. The electronic regulation thermostat with digital display allows a regulation from 60 to 85°C. Features a fast rise in temperature feature, from 20 to 85°C in 25 minutes. Supplied with spiral cable and moulded plug for electrical connection, Voltage 230V, rate 50/60 Hz.

- **Condensate drip system** (except for the 5 level Roll'Service).
- **Door stay system:** easier loading thanks to the new door stay system in open position.

## ROLL'SERVICE - WITH HUMIDIFICATION CONTROL

The electronic control allows selection of 5 rates of hygrometry. Removable rotomoulded tank accessible from the front, with 2 litre capacity, allowing 24 hour operation.



507 356

507 357

### Roll'Service 1/1 GN

ROLL'Service	Electrical consumption (kwh) (1)	Input power (kW) (2)	Capacity (litres)	Overall dim. l x W x h (mm)	Reference	Price
10 levels with s/steel door	0,29	0,825	146	528 x 821 x 1134	507336AS	£6,545
15 levels with s/steel door	0,30	1,215	215	528 x 821 x 1489	507356AS	£7,083
15 levels with glass door	0,30	1,215	215	528 x 821 x 1489	507357AS	£7,745
20 levels with s/steel door	0,575	1,215	284	528 x 821 x 1844	507386AS	£7,635
20 levels with glass door	0,575	1,215	284	528 x 821 x 1844	507387AS	£8,117



507 457

507 486

### Roll'Service 2/1 GN

ROLL'Service	Electrical consumption (kwh) (1)	Input power (kW) (2)	Capacity (litres)	Overall dim. l x W x h (mm)	Reference	Price
10 levels with s/steel door	0,410	1,215	285	733 x 941 x 1134	507436AS	£7,479
15 levels with s/steel door	0,405	1,215	420	733 x 941 x 1489	507456AS	£8,124
15 levels with glass door	0,405	1,215	420	733 x 940 x 1489	507457AS	£8,799
20 levels with s/steel door	0,785	2,015	555	733 x 941 x 1880	507486AS	£9,059
20 levels with glass door	0,785	2,015	555	733 x 941 x 1880	507487AS	£9,469

(1) average electrical power consumption per service (as per NF 040 016 for a 3h30 cycle)

(2) maximum start up power required.





# ROLL'SERVICE - WITHOUT HUMIDIFICATION

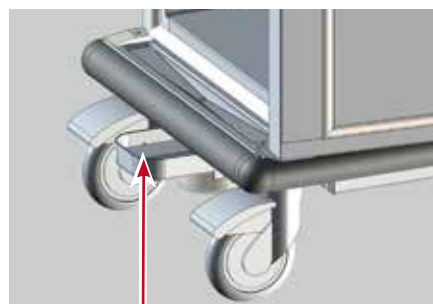
## Roll'Service 1/1 GN

### Condensate drip system

\* not available for 5 level model



Embossed chute



Removable and retractable condensate drip system



805 081



507 481



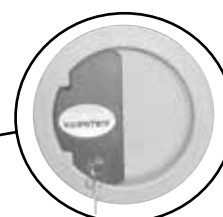
507 452



507 431



507 301



Option:  
Lock and key.

ROLL'Service	Electrical consumption (kwh) (1)	Input power (kW) (2)	Capacity (litres)	Overall dim. l x W x h (mm)	Reference	Price
5 levels with s/steel door	0,22	0,825	77	524 x 817 x 708	507301AS	£5,196
10 levels with s/steel door	0,29	0,825	146	528 x 821 x 1134	507331AS	£5,989
15 levels with s/steel door	0,30	1,215	215	528 x 821 x 1489	507351AS	£6,518
15 levels with glass door	0,30	1,215	215	528 x 821 x 1489	507352AS	£7,245
20 levels with s/steel door	0,575	1,215	284	528 x 821 x 1844	507381AS	£7,106
20 levels with glass door	0,575	1,215	284	528 x 821 x 1844	507382AS	£7,582

## Roll'Service 2/1 GN

ROLL'Service	Electrical consumption (kwh) (1)	Input power (kW) (2)	Capacity (litres)	Overall dim. l x W x h (mm)	Reference	Price
10 levels with s/steel door	0,410	1,215	285	733 x 941 x 1134	507431AS	£6,917
15 levels with s/steel door	0,405	1,215	420	733 x 941 x 1489	507451AS	£7,582
15 levels with glass door	0,405	1,215	420	733 x 941 x 1489	507452AS	£8,231
20 levels with s/steel door	0,785	2,015	555	733 x 941 x 1880	507481AS	£8,443
20 levels with glass door	0,785	2,015	555	733 x 941 x 1880	507482AS	£8,939

(1) average electrical power consumption per service (as per NF 040 016 for a 3h30 cycle)

(2) maximum start up power required.

## Options

Description	Reference	Price
Extra-cost for lock and key	701 961	£127
Extra-cost for reverse opening door*	701 963	£355
Extra-cost for 4 swivel stainless steel wheels Ø 125 mm including 2 brakes to replace wheels with polyamid cover	702 190	£199
Tournus Grid, 1/1 GN, stainless steel	805 081	£20

\* special manufacture, not from stock, no longer allows the key lock.

# TROLLEYS



## Serving trolleys

- **Safe transport:**  
press-drawn trays 10 mm deep for optimum holding of containers.
- **Comfort:**  
sound-proofed trays.
- **Sturdiness:** welded assembly over the whole tray height with flattened edges in lower part.

## Plate trolley

Raised platform

- **Sturdiness:**  
Bent square (25 x 25) tube and bent sheet metal with flattened edges. Stainless steel structure.
- **Ergonomical:**  
platform height: 460 mm (200 plates) and 485 mm (400 plates).



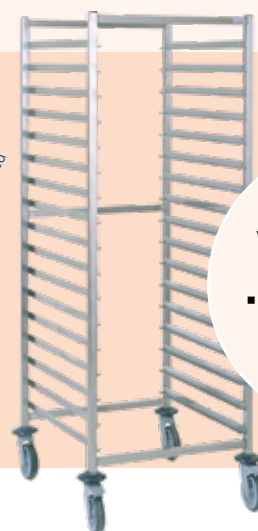
Quick heating  
time and  
evenly distributed  
temperature.

## Heated trolleys

- **Easy use:**  
no tools required to adjust plate diameter (up to 320 mm).
- **Quality of steering**  
silent, easy sliding, reliability
- **Easy cleaning:**  
removable heated sections for deep cleaning.

## GN racking trolleys

- **Strength:**  
load 250 kg per trolley
- **Sturdiness:**  
continuous welded sliders over the whole height.
- **Optimum accessibility**  
longitudinal reinforcement bar not necessary at the front.
- **Swivel wheels**  
Ø 125 mm with non-marking tyre, soundless.



**Wheels  
with polyamide  
Ø 125 mm:**

- Noiseless wheels
- Less inertia on starting



Scan here for  
documentation







# SERVING TROLLEYS



801 542

Stainless steel welded construction. Stainless steel trays with rounded edges, sound-proofed trays. Arched handles: tube Ø 25 mm. 4 swivel wheels Ø 125 mm with polyamide cover including 2 brakes, with annular bumpers. Non-marking rubber tyres. Max load: 50 kg by level. Hygiene certified.

## Serving trolleys with 2 arched handles

Serving trolleys with 2 arched handles	Overall Dim. l x W x h (mm)	Space between trays	Ref.	Price
2 trays 800 x 530 mm	895 x 625 x 960	560	<u>801 542</u>	<b>£392</b>
3 trays 800 x 530 mm	895 x 625 x 960	260	<u>801 543</u>	<b>£481</b>
4 trays 800 x 530 mm	895 x 625 x 1260	260	801 544	<b>£680</b>
2 trays 1000 x 600 mm	1095 x 695 x 960	560	<u>801 552</u>	<b>£469</b>
3 trays 1000 x 600 mm	1095 x 695 x 960	260	<u>801 553</u>	<b>£603</b>
4 trays 1000 x 600 mm	1095 x 695 x 1260	260	801 554	<b>£834</b>



- Press-drawn trays with peripheral surround of 10 mm.
- Tray width of 530 mm for efficient holding of a GN container and optimum safety of use.

## Serving trolleys with 1 arched handle

Serving trolleys with 1 arched handles:	Overall Dim. l x W x h (mm)	Space between trays	Ref.	Price
2 trays 800 x 530 mm	895 x 625 x 960	560	801 602	<b>£415</b>
3 trays 800 x 530 mm	895 x 625 x 960	260	801 603	<b>£503</b>
2 trays 1000 x 600 mm	1095 x 695 x 960	560	801 612	<b>£495</b>
3 trays 1000 x 600 mm	1095 x 695 x 960	260	801 613	<b>£622</b>



801 543



801 603







801 547

## Serving trolleys with 2 arched handles and gallery rails

Gallery rails height 50 mm in stainless steel wire Ø 8 mm, around all 4 sides for each level.

Serving trolleys with 2 arched handles	Overall Dim. l x W x h (mm)	Space between trays	Ref.	Price
2 trays 800 x 530 mm with gallery rails	895 x 625 x 960	560	801 546	<b>£584</b>
3 trays 800 x 530 mm with gallery rails	895 x 625 x 960	260	801 547	<b>£734</b>
2 trays 1000 x 600 mm with gallery rails	1095 x 695 x 960	560	801 556	<b>£690</b>
3 trays 1000 x 600 mm with gallery rails	1095 x 695 x 960	260	801 557	<b>£879</b>

## Accessories

Description	Overall dim. l x W x h (mm)	Reference	Price
Hook-on cutlery pan 1/3 GN	325 x 176 x 200	801 395	<b>£99</b>
Hook-on waste pan	420 x 200 x 250	801 537	<b>£171</b>
Hook-on dustbin bag support 70 litres	360 x 355 x 810	801 538	<b>£189</b>
Trolley covers 895 x 625 mm		229 603	<b>£236</b>
Trolley covers 1095 x 695 mm		229 604	<b>£224</b>



801 395



801 538



801 537



229 603

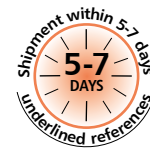
## Options

Description	Reference	Price
Extra cost for serving trolleys with stainless steel wheels	702 180	<b>£230</b>





# PLATE LOWERATORS



Stainless steel construction. Rounded inside angles for easy cleaning. Stainless steel steering handle, stainless steel tube Ø 25 mm. 4 moulded polyethylene protective bumpers. 4 swivel wheels Ø 125 mm with polyamide cover including 2 brakes. Removable constant level dispensers, stack height 580 mm, approximately 60 plates Ø 180 to 290 mm.

## Mobile heated plate lowerators

Powered by on/off switch with lamp. Static heating controlled by mechanical thermostat adjustable from 0°C to 90°C. Heated by 2 stainless steel shielded elements located on the sides. Rock wool insulation. Power rating 800 W (1 stack) and 1500 W (2 stacks), voltage 230 V. Trolleys delivered with transparent polycarbonate lids.

Heated plate trolleys	Overall Dim. l x W x h (mm)	Reference	Price
Heated single plate stack type with lids (for plate diam. 180-290 mm).	530 x 485 x 900	<u>808171UK</u>	<b>£1,644</b>
Heated twin plate stack type with lids (for plate diam. 180-290 mm).	960 x 485 x 900	<u>808172UK</u>	<b>£2,339</b>
Heated twin plate stack type with lids (for plate diam. 215-320 mm).	990 x 520 x 900	808177UK	<b>£3,481</b>



## Mobile ambient plate lowerators

Option: lids.

Description	Overall Dim. l x W x h (mm)	Reference	Price
Ambient single plate stack type without lid (for plate diam. 180-290 mm).	530 x 485 x 900	808 181	<b>£1,481</b>
Ambient twin plate stack type without lids (for plate diam. 180-290 mm).	960 x 485 x 900	808 182	<b>£1,965</b>

## Mobile universal plate lowerators

Trolleys with rectangular platform for all types of dishes (bowls, saucers, oval or rectangular plates). Heated unit c/w stainless steel lid. Ambient unit is not supplied with lid but is optional.

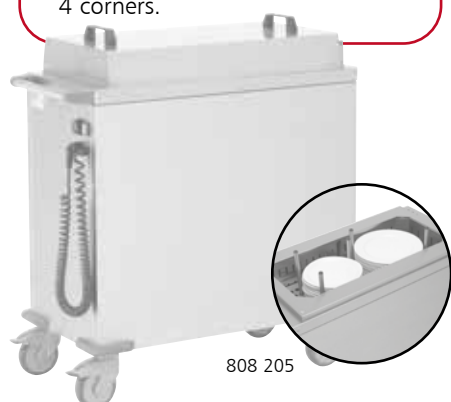
Description	Overall Dim. l x W x h (mm)	Reference	Price
Ambient universal trolley (open top)	960 x 485 x 900	808 201	<b>£2,965</b>
Heated universal trolley (with lid)	960 x 485 x 900	808205UK	<b>£3,194</b>

## Accessories

Description	Overall dim. l x W (mm)	Reference	Price
Transparent polycarbonate lid for ambient single stack lowerator	Ø 375	230 079	<b>£41</b>
Stainless steel lid for ambient universal trolley	750 x 415	119 268	<b>£244</b>



- **Plate holding trays** guided by easy, noiseless rollers.
- **Handling level easily adjusted** by adding or removing springs without using tools.
- **Protection:** bumpers made of non-marking composite material in the 4 corners.





# GLASSES OR TRAY DISPENSER TROLLEYS

Stainless steel construction. Platform thickness 1,2 mm. Mobile platform guided by 4 guide rolls. 4 swivel wheels Ø 125 mm with polyamide cover including 2 brakes. Moulded polyethylene protective buffers.



808 102

808 100

808 103

808 106

Extra cost : 808 107  
(pans GN1/3 not supplied)



808 231

808 235

808 236

808 237

Description	Overall Dim. l x W x h (mm)	Reference	Price
<b>Self-levelling glass dispenser trolley</b> with draining pan (GN1/2 polyethylene, depth. 100 mm) under platform 510 x 510 mm with diamond point base, capacity : 6 baskets, height 115 mm or 10 baskets, height 75 mm.	817 x 545 x 930	808 102	<b>£1,168</b>
<b>Self-levelling glass dispenser trolley</b> with draining pan (GN1/2 polyethylene, depth. 100 mm) <b>under platform 510 x 510 mm with diamond point base</b> , capacity : 6 baskets, height 115 mm or 10 baskets, height 75 mm.	817 x 545 x 930	808 100	<b>£1,426</b>
<b>Self-levelling glass dispenser trolley</b> stainless steel surround cover, capacity : 6 baskets 530 x 530 mm, height 115 mm or 10 baskets,height 75 mm	835 x 645 x 1040	808 103	<b>£2,285</b>
<b>Self-levelling tray dispenser trolley</b> platform 540 x 380 mm, capacity: 140 trays	817 x 545 x 930	808 105	<b>£1,159</b>
<b>Self-levelling tray dispenser trolley</b> stainless steel surround and cover capacity: 140 trays 560 x 400 mm	705 x 675 x 1040	808 108	<b>£2,020</b>
<b>Self-levelling tray dispenser trolley</b> with lateral guide, capacity: 140 trays 540 x 380 mm	817 x 545 x 930	808 106	<b>£1,200</b>
<b>Self-levelling trolley for ABS plastic tray</b> capacity: 140 trays 610 x 410 mm	860 x 545 x 930	808 109	<b>£1,177</b>

## Options

Description	Reference	Price
Extra-cost for cutlery dispenser fitted to self-levelling tray dispenser trolley	808 107	<b>£160</b>
Extra-cost for 4 stainless steel wheels in lieu of polyamide type wheel (plates, glasses and trays)	702 190	<b>£199</b>
Polyamide cover 870 x 540 x 800 mm for glasses or tray dispenser trolleys	221 233	<b>£204</b>
Polyamide cover 920 x 570 x 1070 mm for cutlery dispenser trolleys	221 232	<b>£306</b>

## Drop in dispensers with removable insert

Drop in dispenser capacities: **ambient or heated plate lowerator**: up to 60 plates, 180-290 mm diameter. **Glasses dispenser**, 6 baskets height 115 mm or 10 baskets height 75 mm. **Tray dispenser**: up to 140 trays. Heated lowerator provided with lid & remote control mounting switch.



Description	Overall Dim. l x W x h (mm)	Reference	Price
Ambient single plate stack drop in lowerator without lid (for plate diam. 180 - 290 mm)	Ø 380 x h. 740	<u>808 231</u>	<b>£423</b>
Heated single plate stack drop in lowerator with lid (for plate diam. 180 -290 mm)	Ø 380 x h. 740	<u>808 235</u>	<b>£1,467</b>
Drop in glasses dispenser	690 x 710 x 715	808 236	<b>£2,246</b>
Drop in tray dispenser (for up to 460 x 360 mm tray)	580 x 660 x 715	808 237	<b>£2,109</b>





# SELF-SERVICE TROLLEYS

Stainless steel construction. Frame in 25 x 25 mm stainless steel tube. Longitudinal reinforcing bars in 50 x 25 mm stainless steel tube. Wire type tray runner panels in 4.8mm diameter s/steel, welded to frame. With or without beige laminate side modesty panels thickness 2 mm fixed by clips. 4 swivel wheels Ø 125 mm with polyamide cover including 2 braked. Annular bumpers.



800 072

## 6 tier (tray entry width ways)

Trolley with entry side by side. Capacity: 12 or 18 trays depending on the models.

Space between tiers: 125 mm.

Description	Overall Dim. l x W x h (mm)	Width of trays (mm)	trolleys without panels		trolleys with panels	
			ref	price	ref	price
Trolley 2 x 6 tiers	930 x 630 x 1030	320 - 370	800 071	<b>£930</b>	800 072	<b>£1,095</b>
Trolley 2 x 6 tiers with upper shelf	930 x 630 x 1040	320 - 370	800 073	<b>£1,101</b>	800 074	<b>£1,267</b>
Trolley 3 x 6 tiers with upper shelf	1340 x 630 x 1040	320 - 370	800 075	<b>£1,420</b>	800 076	<b>£1,588</b>



800 075

## 12 tier (tray entry width ways)

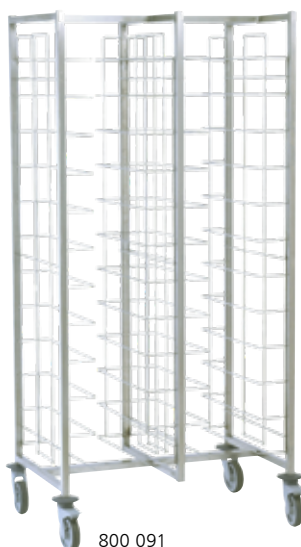
Capacity: 12 or 24 trays depending on the models. Entry side by side (trolley 2 x 12 tiers).

Space between tiers: 125 mm

Description	Overall Dim. l x W x h (mm)	Width of trays (mm)	Trolleys without panels		Trolleys with panels	
			ref	price	ref	price
Trolley 1 x 12 tiers	510 x 630 x 1790	320 - 370	<u>800 081</u>	<b>£699</b>	800 082	<b>£915</b>
Trolley 2 x 12 tiers	930 x 630 x 1790	320 - 370	<u>800 091</u>	<b>£1,204</b>	800 092	<b>£1,424</b>



**Anti-fall clips  
for trays  
on each tier**



800 091



800 092







800 096

## 12 tier (tray entry length ways)

Capacity: 24 trays, entry back to back.

Space between tiers: 125 mm..

Description	Overall Dim. l x W x h (mm)	Length of trays (mm)	Trolleys without panels		Trolleys with panels	
			Ref	Price	Ref	Price
Trolley 2 x 12 tiers	620 x 790 x 1790	400 - 480	800 093	<b>£814</b>	800 094	<b>£1,148</b>
Trolley 2 x 12 tiers	700 x 790 x 1790	480 - 560	800 095	<b>£819</b>	800 096	<b>£1,152</b>

Extra cost for self-service trolleys with 4 stainless steel wheels - Ref: 702 180 - Price: **£230**



## CHOOSE THE MODESTY PANEL COLOUR

The standard side modesty panels of the self-service trolleys are made of 2 mm thick compact beige laminate. You can personalise the cladding of the 2 outsides of your trolleys in one of the colours below (minimum order of 3 trolleys):

- Ref. 702 097, personalised cladding for trolley with 6 tiers, extra charge per trolley: **£257**
- Ref. 702 098, personalised cladding for trolley with 12 tiers with insertion widthways, extra charge per trolley: **£510**
- Ref. 702 099, personalised cladding for trolley with 12 tiers with insertion lengthways, extra charge per trolley: **£771**
- Personalisation is done by bonding a resistive film (cleaning resistant). We offer a choice of 20 colours covering cladding (swatch on request).

## Standard colours to match the cladding of dispensing units

Delft blue	Red cherry	Yellow sunflower	Yellow lemon	Green apple	Orange	Fuchsia
Violine	Black	Light concrete grey	Chicago dark concrete grey	Brushed aluminum	Premium white	Alpine white
American mapple champagne	Natural bardolino oak	Kendal oak oil	Shorewood	Brown Fleetwood	Walnut of pacific tobacco	

Trolleys can also be personalised with your logo or that of your customers: please make enquiries with us.



# RACK AND TRAY DOLLEYS



## General purpose basket rack dolly

Stainless steel construction. Base thickness 1,2 mm. Internal base dimensions: 510 x 510 mm. Bolted handle. 4 Ø 100 mm swivel wheels with galvanized steel cover. Max load: 80 kg.

Description	Overall Dim. l x W x h (mm)	Reference	Price
General purpose stainless steel rack dolly	515 x 515 x 165	<u>800 101</u>	<b>£155</b>
General purpose stainless steel rack dolly with handle	600 x 515 x 850	<u>800 102</u>	<b>£219</b>



## Heavy duty basket rack dolly (removable ABS base)

Stainless steel construction. Tube 25 x 25 mm. Removable ABS base. Internal base dimensions: 510 x 510 mm. Bolted handle. 4 Ø 125 mm swivel wheels with polyamide cover (includes 2 braked). Annular bumpers. Max load: 150 kg.

Description	Overall Dim. l x W x h (mm)	Reference	Price
Rack dolly with ABS base	570 x 570 x 225	800 111	<b>£244</b>
Rack dolly with ABS base and upstand	630 x 570 x 900	800 112	<b>£304</b>



## Heavy duty basket rack dolly (removable steel base)

Stainless steel frame construction 25 x 25 mm. Removable stainless steel base 1,2 mm thick. Internal base dimensions: 510 x 510 mm (rack dolly) and 750 x 510 mm (largest tray dolly). Bolted handle. 4 Ø 125 mm swivel wheels with polyamide cover including 2 brakes. Annular bumpers. Max load: 150 kg.

Description	Overall Dim. l x W x h (mm)	Reference	Price
Rack dolly with heavy duty steel base	570 x 570 x 225	800 125	<b>£260</b>
Rack dolly with heavy duty steel base + bolted handle	630 x 570 x 900	800 126	<b>£320</b>
Rack dolly with heavy duty steel base + bolted handle	870 x 570 x 900	800 130	<b>£372</b>



## Options

Description	Reference	Price
Extra-cost for rack and tray dollies with stainless steel wheels (not suitable for general purpose type rack dollies)	702 183	<b>£168</b>
Polyamide cover for rack dollies 530 x 530 x H. 300 mm	230 532	<b>£179</b>
Polyamide cover 750 x 510 x H. 300 mm for trays dollies	221 234	<b>£252</b>



## General purpose Euronorm tray dolly (fixed base)

For Euronorm trays or containers 600 x 400 mm. Food quality stainless steel construction. Tray thickness 1.2 mm. Base size 610 x 410 mm. Bolted handle 4 Ø 100 mm swivel wheels with galvanized steel cover. Max load: 80 kg.

Description	Overall Dim. l x W x h (mm)	Reference	Price
Euronorm tray dolly (fixed base)	615 x 415 x 165	800 105	<b>£154</b>
Euronorm tray dolly (fixed base) with handle	700 x 415 x 850	800 106	<b>£241</b>



# GN CONTAINER STORAGE TROLLEYS

## THE TOURNUS ASSETS

- **Sturdiness:** max. load 250 kg per trolley and 20 kg per level.
- **Ergonomic:** intermediate brace on trolleys with 10-17-20 levels and GN 2/1 with 15 levels allowing maximum access for front loading.

Stainless steel construction. Square tubes 25 x 25 mm. Welded tray runners with container stop. 4 swivel wheels Ø 125 mm, including 2 brakes, with polyamide cover. Annular bumpers.

Overall dimensions: trolleys 1/1 GN size - 655 x 455 mm, trolleys 2/1 GN - 775 x 660 mm. Trolleys with 6 and 8 tiers include a top shelf. Max load: 20 Kg per tier and 250 Kg per trolley.



## GN container storage trolleys

Description	e* (mm)	Height (mm)	Number of tiers	Reference	Price
1/1 GN trolley with top shelf.	81	760	6	<u>804 201</u>	£416
1/1 GN trolley with top shelf.	81	900	8	<u>804 203</u>	£437
1/1 GN trolley	144	1650	10	<u>804 204</u>	£422
1/1 GN trolley	81	1490	15	<u>804 206</u>	£444
1/1 GN trolley	81	1650	17	<u>804 207</u>	£456
1/1 GN trolley	77	1785	20	<u>804 209</u>	£481
2/1 GN trolley with top shelf	81	760	6	<u>804 231</u>	£481
2/1 GN trolley with top shelf	81	900	8	<u>804 233</u>	£490
2/1 GN trolley	144	1650	10	<u>804 234</u>	£453
2/1 GN trolley	81	1490	15	<u>804 236</u>	£505
2/1 GN trolley	81	1650	17	<u>804 237</u>	£518
2/1 GN trolley	77	1785	20	<u>804 239</u>	£527

(\*) e: vertical space between tray runners.

Extra-cost for racking trolleys (15, 17 or 20 levels) with tie bar - Ref: 702 221 - Price: **£221**

Extra cost for GN racking with 4 stainless steel wheels (welded, delivered flat packed or stackable) Ref: 702 181 - Price: **£230**



804 201



804 209



804 237



## Transportable GN container trolley

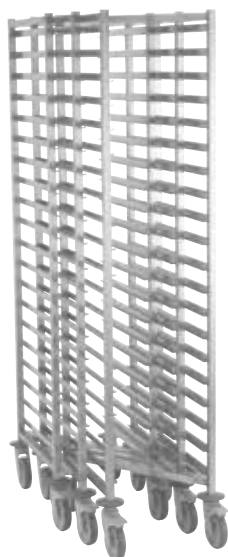
Stainless steel construction. Square tubular uprights 25 x 25 mm. Welded tray runners with container stops at the end. **Full height vertical closing bar for container transport inside a vehicle**, loading, unloading, passing through doors whilst heavily loaded. Ø 125 wheels with non protruding stainless steel cover to take up as little place as possible. Overall dimensions: 583 x 384 mm, height 1485 mm. Space between tray runners 85 mm.

Description	Reference	Price
transport trolley 1/1 GN with 15 tiers	804 212	£1,172





# GASTRONORM RACKING TROLLEYS



## Stackable GN container trolleys

Description	e* (mm)	Overall dim. l x W x h (mm)	Number of levels	Reference	Price
1/1 GN stackable trolley	77	655 x 455 x 1785	20	804 229	£771
2/1 GN stackable trolley	77	775 x 655 x 1785	20	804 259	£811

(\*) e: vertical space between tray runners

## Washable polyamide covers for GN container trolleys

Covers for 6-8 tier trolleys.

Covers with zip for 10 tier trolleys GN and more

Description	L x W x h (mm)	For trolleys	Reference	Price
Cover	590 x 405 x 740	1/1 GN 6-8 tiers	221 235	£272
Cover	710 x 610 x 740	2/1 GN 6-8 tiers	221 236	£275
Cover	605 x 405 x 1325	1/1 GN 15 tiers*	221 240	£284
Cover	725 x 610 x 1325	2/1 GN 15 tiers	221 241	£284
Cover	590 x 405 x 1620	1/1 GN 10-17-20 tiers	228 168	£211
Cover	710 x 610 x 1620	2/1 GN 10-17-20 tiers	228 169	£217

(\*) including transport trolley : 804 212



228 169

## Disposable polyethylene covers for GN container trolleys

Disposable covers in polyethylene thickness 50 microns : delivered by box of 100 covers.

Description	For trolleys	Reference	Price.
100 polyethylene cover	GN 1/1	228 170	£279
100 polyethylene cover	GN 2/1	228 171	£395

# TROLLEY FOR DISHWASHER BASKETS



**Trolley with 8 tiers** (for horizontal storage of dishwasher baskets).

Stainless steel construction. Square tubular leg 25 x 25 mm.

Continuous argon welded basket runners. 4 swivel wheels 125 mm,

2 brakes, with polyamide cover. Annular wheel guards.

Space between tiers : 189 mm.



Description	Overall dim. l x W x h (mm)	Reference	Price
Trolley with 8 tiers (for horizontal storage of dishwasher baskets)	630 x 630 x 1785	<u>804 193</u>	£603
Polyamide cover with zip for trolley 8 tiers	585 x 600 x 1620	221 231	£378

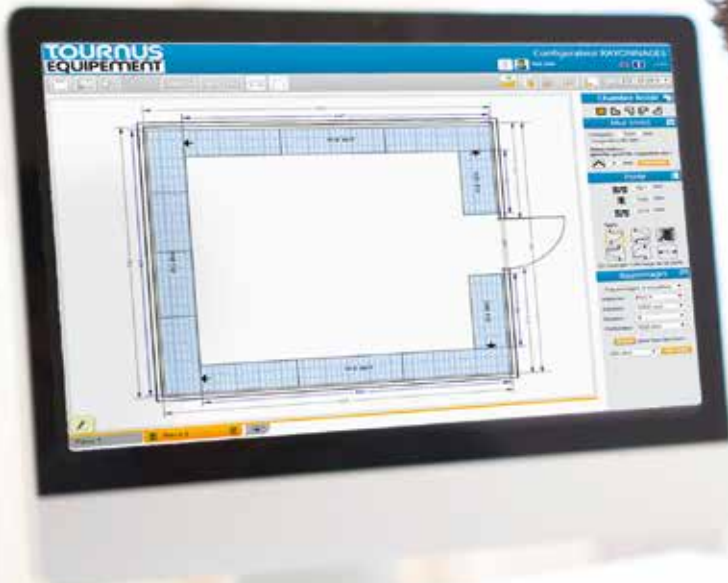




# Speed Shelving



## YOUR SHELVING LAYOUT SOFTWARE



**Easy  
to use**

For optimum layout of your shelving. Speed Shelving enables you to draw up an estimate for your customer, transform it into an order and prepare the packaging.

### EASY TO USE

Intuitive browsing. The parts are predefined, simple set-up for easily modified layouts. Possibility of printing out an estimate and drawing in Excel.

### TRACEABILITY

The files are classed and accessible. The quotations can be easily changed, used to place the order and prepare the installation.

### RELIABILITY

All the parameters of the room are taken into account: doors, necessary clearance, possible presence of evaporators, recess resulting from grooved plinths.

Available on [www.tournus.com](http://www.tournus.com)



Video !





The NF Food hygiene certification certifies the quality of the materials used for food contact and guarantees easy cleaning.



The NSF certification guarantees easy cleaning and safety to consumers.

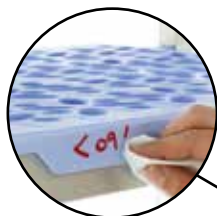


# SHELVING



## New shelf:

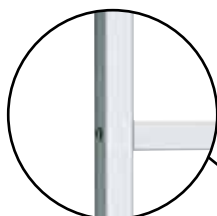
Innovative design  
Overhanging shelves cover up the upper part of the aluminium bar, for an optimal fit.



**Tournus exclusive :** there is a space at the edge of the shelves where white board erasable markers can be used to note the contents of the shelf, helps manage the stock of food.

## Hygienic:

removable shelves, machine washable up to 90°C.



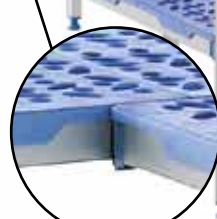
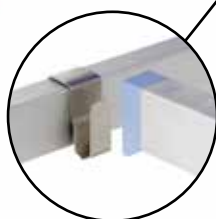
## Sturdiness :

Uprights made of tubular anodised aluminium 32 x 30 mm.



## Load resistance :

150 kg evenly distributed per level.



## Easy assembly:

by tapered self-locking insertion to strengthen the structure.

## Stability :

Adjustable jacks without visible threading (hygienic).

## Modular :

in line or corner type assembly.

## Easy :

2 hooks per tier whatever the width 400, 500 or 560 mm.

## Optimum accessibility :

the corner hook does away with the upright so as to store products in the corner.  
Easy floor cleaning.



Shelving entirely recyclable



## Speed Shelving

Shelving design software available on [www.tournus.com/en/](http://www.tournus.com/en/)



Flash on our documentation !





**One person  
alone  
can assemble  
5 metres  
in 5 minutes  
without tools**







# RACKING WITH REMOVABLE SHELVES



Racking with removable shelves consist of shelves and uprights. Rapid assembly process, without tools, by simply snapping into place. Shaped assembly is possible by replacing an upright by corner hooks (2 corner hooks per tier). Load: up to 200 kg by level, 120 kg for the two higher lengths. NF Hygiene Certified. Operating temperature: -30°C à + 60°C. Shelving is washable in dishwasher (90°C) and fits over the top of the bar: nicer and more stable. It is also possible to write directly on the shelf with an erasable ink pen. Many accessories: Rear protection bar, separations, plates for fixing to the floor and walls.

**TO PLACE AN ORDER:** see pages 34 to 37 for the best prices of combinations for linear or angle assembly. **On request, each carton can be marked.** The combination price results from the addition of shelves, upright and angle hooks (if necessary).



500 371

## Removable polypropylene shelves

2 anodised aluminium bars and high density polypropylene shelves.



- Even more storage possibilities
- Solid shelves and shelves compatible with other models: possibility to mix shelves.

Lengths (mm)	Width 400 mm		Width 500 mm		Width 560 mm (GN)	
	Ref.	Price	Ref.	Price	Ref.	Price
608	<u>500 366</u>	£46	<u>500 386</u>	£54	<u>500 416</u>	£56
708	<u>500 367</u>	£49	<u>500 387</u>	£55	<u>500 417</u>	£60
808	<u>500 368</u>	£58	<u>500 388</u>	£59	<u>500 418</u>	£64
910	<u>500 369</u>	£66	<u>500 389</u>	£71	<u>500 419</u>	£73
1010	<u>500 370</u>	£71	<u>500 390</u>	£73	<u>500 420</u>	£77
1110	<u>500 371</u>	£74	<u>500 391</u>	£76	<u>500 421</u>	£81
1210	<u>500 372</u>	£77	<u>500 392</u>	£78	<u>500 422</u>	£85
1312	<u>500 373</u>	£85	<u>500 393</u>	£89	<u>500 423</u>	£96
1412	<u>500 374</u>	£89	<u>500 394</u>	£91	<u>500 424</u>	£101
1512	<u>500 375</u>	£92	<u>500 395</u>	£96	<u>500 425</u>	£105
1612	<u>500 376</u>	£98	<u>500 396</u>	£101	<u>500 426</u>	£110
1714	<u>500 377</u>	£106	<u>500 397</u>	£110	<u>500 427</u>	£118





500 124



## Uprights

In aluminium with screwed fixing studs determining the number of tiers.



Height 1750 mm	Width 400 mm		Width 500 mm		Width 560 mm (GN)	
	Ref.	Price	Ref.	Price	Ref.	Price
3 tier	<u>500 103</u>	<b>£109</b>	<u>500 123</u>	<b>£113</b>	<u>500 153</u>	<b>£117</b>
4 tier	<u>500 104</u>	<b>£111</b>	<u>500 124</u>	<b>£116</b>	<u>500 154</u>	<b>£118</b>
5 tier	<u>500 105</u>	<b>£117</b>	<u>500 125</u>	<b>£119</b>	<u>500 155</u>	<b>£122</b>

## Uprights on wheels

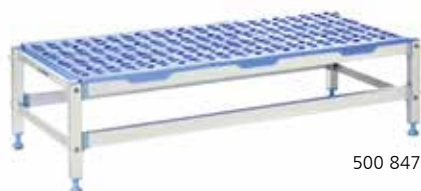
2 swivel wheels with ball bearings diameter 125 mm polyamid cover including 1 brake. Load maxi 100 kg/level.



Height 1750 mm	Width 400 mm		Width 500 mm		Width 560 mm (GN)	
	ref.	price	ref.	price	ref.	price
3 tier with wheels	-	-	<u>500 133</u>	<b>£184</b>	<u>500 163</u>	<b>£190</b>
4 tier with wheels	-	-	<u>500 134</u>	<b>£189</b>	<u>500 164</u>	<b>£191</b>
5 tier with wheels	-	-	<u>500 135</u>	<b>£192</b>	<u>500 165</u>	<b>£195</b>

## Dunnage rack

2 low uprights + 1 polypropylene shelf.



500 847

Description	Overall dim. L x W x H (mm)	Reference	Price
Dunnage rack 1 tier	890 x 500 x 300	500 844	<b>£317</b>
Dunnage rack 1 tier	1192 x 500 x 300	500 847	<b>£320</b>
Dunnage rack 1 tier	1494 x 500 x 300	500 850	<b>£346</b>





# SHELVING ASSEMBLIES (STRAIGHT RUN)

## Height 1750 mm - Polypropylene shelves



To place an order:

Please indicate the depth code followed by the overall length required.

**PLE 1594**

Depth

Length

For shelving on wheels: (500 and 560 mm deep only).

Add the suffix R at the end of the reference (e.g.: PLE 1594R).

Price of the whole combination on wheels: add £ 52 for every upright to the price of the whole combination per leg (above).



Depth 560 mm: GN

Overall length (mm)	Combinaisons	Depth 400 mm			Depth 500 mm			Depth 560 mm (GN)		
		3 tier PLA	4 tier PLB	5 tier PLC	3 tier PLD	4 tier PLE	5 tier PLF	3 tier PLG	4 tier PLH	5 tier PLI
690	608	352	400	456	384	443	504	380	433	490
790	708	362	419	479	387	449	510	397	454	518
890	808	387	451	520	400	465	532	422	488	559
992	910	415	486	564	430	504	582	448	521	602
1092	1010	422	497	576	440	516	595	464	545	629
1192	1110	435	511	598	451	532	618	478	560	650
1292	1210	448	530	619	460	545	630	490	577	671
1394	1312	474	565	662	490	583	680	519	618	722
1494	1412	481	574	673	498	594	694	531	632	743
1594	1512	495	591	695	509	611	712	545	650	763
1694	1612	505	609	713	523	628	735	560	672	792
1728	808+808	669	793	924	691	814	946	729	857	996
1796	1714	531	642	759	551	668	783	585	706	833
1830	808+910	694	826	967	719	855	995	751	892	1,038
1932	910+910	719	859	1,007	748	895	1,044	776	926	1,081
2032	910+1010	729	870	1,021	758	905	1,058	797	947	1,109
2132	1010+1010	735	881	1,035	766	916	1,073	811	970	1,135
2232	910+1210	751	902	1,062	776	934	1,092	819	980	1,152
2334	910+1312	776	937	1,107	807	973	1,141	849	1,020	1,199
2432	1110+1210	773	933	1,097	800	960	1,127	849	1,020	1,199
2532	1210+1210	784	948	1,121	807	973	1,141	861	1,037	1,221
2634	1210+1312	811	982	1,161	837	1,011	1,193	892	1,076	1,269
2736	1312+1312	837	1,017	1,203	867	1,051	1,239	921	1,117	1,319
2834	1210+1512	833	1,010	1,197	857	1,040	1,226	916	1,111	1,311
2936	1312+1512	857	1,044	1,238	887	1,078	1,273	946	1,150	1,360
3036	1412+1512	867	1,055	1,253	896	1,089	1,289	957	1,165	1,382
3136	1512+1512	879	1,073	1,272	907	1,108	1,310	972	1,183	1,401
3172	1010+1010+1010	1,050	1,265	1,495	1,091	1,318	1,548	1,158	1,395	1,644
3236	1512+1612	892	1,087	1,296	921	1,124	1,330	989	1,204	1,431
3272	910+1110+1110	1,067	1,289	1,522	1,109	1,339	1,576	1,167	1,405	1,656
3336	1612+1612	902	1,107	1,317	934	1,139	1,353	1,004	1,227	1,458
3372	1010+1110+1110	1,075	1,301	1,535	1,118	1,352	1,588	1,184	1,429	1,686
3438	1612+1714	930	1,138	1,358	961	1,180	1,400	1,030	1,261	1,501
3472	1010+1110+1210	1,086	1,318	1,557	1,125	1,361	1,605	1,197	1,446	1,707
3540	1714+1714	954	1,172	1,399	993	1,219	1,449	1,055	1,296	1,544
3572	1110+1110+1210	1,098	1,332	1,578	1,136	1,380	1,625	1,208	1,463	1,725
3674	1110+1110+1312	1,125	1,367	1,621	1,167	1,420	1,675	1,238	1,502	1,777
3772	1210+1210+1210	1,125	1,367	1,621	1,155	1,400	1,653	1,234	1,496	1,771
3812	910+910+910+910	1,329	1,609	1,898	1,385	1,674	1,967	1,438	1,732	2,037
3876	1110+1312+1312	1,163	1,420	1,685	1,204	1,468	1,738	1,281	1,557	1,846
3912	910+910+910+1010	1,338	1,618	1,912	1,393	1,685	1,982	1,455	1,753	2,066
3976	1210+1312+1312	1,176	1,434	1,706	1,213	1,480	1,751	1,293	1,575	1,867
4078	1312+1312+1312	1,200	1,468	1,748	1,243	1,518	1,800	1,323	1,614	1,919
4178	1312+1312+1412	1,208	1,480	1,759	1,251	1,529	1,814	1,333	1,630	1,937
4278	1312+1312+1512	1,222	1,496	1,782	1,263	1,547	1,834	1,347	1,649	1,959
4378	1412+1412+1412	1,226	1,502	1,788	1,267	1,553	1,842	1,360	1,663	1,980
4478	1312+1512+1512	1,243	1,524	1,816	1,285	1,575	1,871	1,372	1,680	2,002
4578	1412+1512+1512	1,251	1,534	1,830	1,293	1,585	1,884	1,386	1,697	2,021
4612	1110+1110+1110+1110	1,411	1,717	2,037	1,468	1,784	2,108	1,556	1,887	2,235
4678	1312+1612+1612	1,267	1,557	1,858	1,310	1,610	1,912	1,405	1,723	2,057
4712	1110+1110+1110+1210	1,427	1,737	2,059	1,477	1,796	2,123	1,570	1,904	2,253
4778	1512+1512+1612	1,275	1,570	1,873	1,319	1,620	1,926	1,415	1,738	2,070
4814	1110+1110+1110+1312	1,450	1,771	2,101	1,507	1,834	2,171	1,598	1,945	2,304
4878	1512+1612+1612	1,289	1,585	1,894	1,330	1,636	1,947	1,432	1,758	2,099
4914	1110+1110+1210+1312	1,464	1,785	2,123	1,514	1,846	2,184	1,612	1,961	2,326
4978	1612+1612+1612	1,302	1,604	1,914	1,344	1,653	1,967	1,448	1,782	2,127

# SHELVING ASSEMBLIES (ANGLED RUN)

## Height 1750 mm - Polypropylene shelves



To place an order:

Please indicate depth code followed by the overall length required.

**PCE 1553**

Depth

Length

The reference and the price include the angle hooks.



Overall length (mm)	Combinaisons	Depth 400 mm			Depth 500 mm			Depth 560 mm (GN)		
		3 tier PCA	4 tier PCB	5 tier PCC	3 tier PCD	4 tier PCE	5 tier PCF	3 tier PCG	4 tier PCH	5 tier PCI
649	608	259	314	370	289	352	415	279	339	396
749	708	273	330	389	294	356	421	299	358	423
849	808	299	362	433	306	374	442	321	393	465
951	910	321	397	476	335	414	491	348	425	506
1051	1010	331	409	488	344	423	504	365	449	536
1151	1110	344	424	508	356	441	527	378	465	556
1251	1210	356	442	530	365	451	541	389	482	577
1353	1312	381	477	572	395	491	587	420	521	627
1453	1412	389	487	585	401	502	603	433	540	646
1553	1512	401	503	608	416	519	625	444	554	669
1653	1612	416	520	628	428	536	644	461	577	697
1687	808+808	577	704	835	594	725	855	628	763	901
1755	1714	441	552	670	456	574	694	487	611	737
1789	808+910	603	736	878	625	763	902	653	798	943
1891	910+910	628	771	920	653	803	953	677	829	988
1991	910+1010	635	779	934	663	812	968	695	853	1,016
2091	1010+1010	644	795	947	670	825	980	710	874	1,043
2191	910+1210	663	814	976	682	841	1,002	722	886	1,057
2293	910+1312	686	849	1,018	710	880	1,051	749	926	1,107
2391	1110+1210	682	844	1,010	704	869	1,037	749	926	1,107
2491	1210+1210	695	860	1,031	710	880	1,051	763	941	1,126
2593	1210+1312	722	895	1,074	743	920	1,098	793	980	1,176
2695	1312+1312	746	928	1,117	771	957	1,150	820	1,020	1,224
2793	1210+1512	743	923	1,109	763	947	1,134	816	1,016	1,218
2895	1312+1512	767	955	1,152	793	988	1,184	846	1,054	1,265
2995	1412+1512	774	968	1,164	801	997	1,198	859	1,072	1,288
3095	1512+1512	788	983	1,185	812	1,016	1,219	872	1,086	1,307
3131	1010+1010+1010	957	1,179	1,405	996	1,224	1,456	1,059	1,301	1,550
3195	1512+1612	801	1,001	1,205	826	1,031	1,239	888	1,111	1,337
3231	910+1110+1110	976	1,200	1,434	1,013	1,248	1,485	1,068	1,311	1,563
3295	1612+1612	812	1,018	1,227	838	1,049	1,261	905	1,131	1,364
3331	1010+1110+1110	983	1,212	1,448	1,021	1,258	1,499	1,084	1,332	1,589
3397	1612+1714	838	1,051	1,269	868	1,086	1,310	932	1,165	1,405
3431	1010+1110+1210	996	1,229	1,469	1,030	1,269	1,513	1,096	1,352	1,613
3499	1714+1714	864	1,084	1,311	897	1,126	1,359	955	1,199	1,448
3531	1110+1110+1210	1,008	1,247	1,490	1,043	1,286	1,533	1,111	1,367	1,632
3633	1110+1110+1312	1,034	1,280	1,532	1,073	1,326	1,583	1,138	1,405	1,681
3731	1210+1210+1210	1,034	1,280	1,532	1,059	1,307	1,562	1,134	1,400	1,676
3771	910+910+910+910	1,238	1,518	1,811	1,289	1,580	1,878	1,339	1,636	1,945
3835	1110+1312+1312	1,073	1,329	1,596	1,111	1,378	1,648	1,182	1,463	1,752
3871	910+910+910+1010	1,248	1,529	1,824	1,299	1,589	1,891	1,357	1,657	1,972
3935	1210+1312+1312	1,084	1,346	1,616	1,119	1,387	1,658	1,195	1,480	1,775
4037	1312+1312+1312	1,111	1,381	1,657	1,149	1,427	1,709	1,223	1,518	1,823
4137	1312+1312+1412	1,119	1,391	1,674	1,156	1,436	1,721	1,236	1,534	1,844
4237	1312+1312+1512	1,130	1,407	1,694	1,168	1,454	1,745	1,249	1,553	1,865
4337	1412+1412+1412	1,134	1,411	1,702	1,172	1,461	1,751	1,261	1,570	1,885
4437	1312+1512+1512	1,153	1,435	1,728	1,189	1,482	1,779	1,272	1,585	1,905
4537	1412+1512+1512	1,159	1,447	1,744	1,198	1,494	1,793	1,286	1,604	1,927
4571	1110+1110+1110+1110	1,323	1,630	1,949	1,372	1,693	2,017	1,456	1,793	2,140
4637	1312+1612+1612	1,177	1,469	1,772	1,215	1,515	1,821	1,306	1,630	1,963
4671	1110+1110+1110+1210	1,333	1,649	1,971	1,382	1,704	2,030	1,469	1,811	2,162
4737	1512+1512+1612	1,185	1,481	1,784	1,223	1,527	1,834	1,317	1,641	1,976
4773	1110+1110+1110+1312	1,360	1,680	2,012	1,409	1,744	2,080	1,499	1,848	2,209
4837	1512+1612+1612	1,198	1,497	1,806	1,236	1,545	1,856	1,331	1,663	2,005
4873	1110+1110+1210+1312	1,372	1,697	2,032	1,422	1,753	2,095	1,512	1,866	2,233



## ACCESSORIES



123 014



800 711



500 817



500 813



118 728



120 797



Separation



Rear protection bar

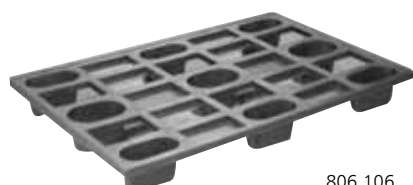


230 653

Description	Reference	Price
Corner unit	<u>123 014</u>	<b>£4</b>
Supplementary studs (each)	800 711	<b>£6</b>
1/1 GN pan holder with tray runners (34 mm height gap between)	500 817	<b>£244</b>
Hook-on label - holder	500 813	<b>£24</b>
Floor fixing plate	118 728	<b>£8</b>
Wall fixing plate	120 797	<b>£8</b>
Separation width 400 mm (per pair)	500 814	<b>£54</b>
Separation width 500 mm (per pair)	500 815	<b>£60</b>
Separation width 560 mm (per pair)	500 816	<b>£65</b>
Rear protection bar, 808 mm long	500 783	<b>£55</b>
Rear protection bar, 910 mm long	500 784	<b>£58</b>
Rear protection bar, 1010 mm long	500 785	<b>£60</b>
Rear protection bar, 1110 mm long	500 786	<b>£61</b>
Rear protection bar, 1210 mm long	500 787	<b>£64</b>
Rear protection bar, 1312 mm long	500 788	<b>£65</b>
Rear protection bar, 1412 mm long	500 789	<b>£66</b>
Rear protection bar, 1512 mm long	500 790	<b>£66</b>
Rear protection bar, 1612 mm long	500 791	<b>£71</b>
Rear protection bar, 1714 mm long	500 792	<b>£71</b>
Polypropylene grids W 380 x L 300 mm	<u>230 643</u>	<b>£16</b>
Polypropylene grids W 380 x L 400 mm	<u>230 644</u>	<b>£20</b>
Polypropylene grids W 480 x L 300 mm	<u>230 653</u>	<b>£20</b>
Polypropylene grids W 480 x L 400 mm	<u>230 654</u>	<b>£20</b>
Polypropylene grids W 550 x L 300 mm	<u>230 663</u>	<b>£20</b>
Polypropylene grids W 550 x L 400 mm	<u>230 664</u>	<b>£27</b>

## PALLETS

Stackable polyethylene pallets, food quality. Maximum load (static): 4 tons (reference 806 105), 500 kg (reference 806 106).



806 106

Description	Overall dimensions W x L (mm)	Reference	Price
Polyethylene pallet, grey flat base	1200 x 800	806 105	<b>£306</b>
Polyethylene pallet, black slatted base	1200 x 800	806 106	<b>£78</b>





## SHELVING - POLYPROPYLENE SHELVES



Angled run



Straight run

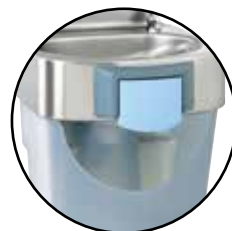
## Wide choice :

manual, electronic soap dispenser, soap pump.



## Ergonomics and sustainable development :

tap with infra red detection cell made in France. Reduced water consumption thanks to immediate stop of flow on removal of hands.



Also available with knee-operated tap



## Easier installation :

thanks to the fixing strip at the rear of the splash-back



## Hygienic :

oversized basin (350 x 275 mm, depth 80 mm).



## Eye-catching :

one-piece. The basin, lip and backplash assembly is made in one piece. Streamlined design.



## Insert bin :

This recess allows straightforward installation of the wash basin, regardless of the room taken up by the water inlet and evacuation pipe.



## Complete kit :

comes as standard with nail brush, bin, electronic tap, connection hoses, sink pipe trap and wall bracket.



Scan here for documentation



Hand wash basins - Sterilizing cabinets - Insect killers - Dustbins...







# TS 2000N HAND WASH BASINS (W.R.A.S. APPROVED)



806 301



**Reduced water consumption,**  
only 3 litres per minute

Food quality stainless steel construction monobloc. Hand wash basins supplied with nailbrush and bin under the basin for the disposal of used hand towels. Well 350 x 275 mm, depth 80 mm. Mixer tap with non-return valves and temperature setting. Supplied with 2 flexible hoses, trap and wall fixing support. The bin includes a recess at the back for easy installation. NF-Hygiene Certified.

## TS 2000N WITH ELECTRONIC CONTROL

Electronically controlled mixer tap, made in France, triggered by infra red detection cell. Automatic opening and closing of tap immediately after hands are placed in front of or removed from the cell, without timer for water saving. The tap also has an aerator giving a softer stream of water which also reduces water consumption.

## Battery-operated TS 2000N

Wash basin supplied with CR-P2, 6 volt batteries, service life: 350,000 presses, 3 years



Description	Overall dim. l x W x h(mm)	Reference	Price
TS 2000N with electronic control	400 x 400 x 755	806 301	<b>£1,071</b>
TS 2000N with electronic control + manual soap dispenser (500 ml)	400 x 400 x 755	<u>806 302</u>	<b>£1,131</b>
TS 2000N with electronic control + integrated soap dispenser (500 ml)	400 x 400 x 755	<u>806 304</u>	<b>£1,196</b>

6 volt battery - Ref: 262 620 - Price.: **£44**

## Mains supply TS 2000N

Wash basin with transformer for mains connection (230 V single phase).

Description	Overall dim. l x W x h(mm)	Reference	Price
TS 2000N with electronic control + transformer	400 x 400 x 755	806291UK	<b>£1,340</b>
TS 2000N with electronic control with manual soap dispenser (500 ml) + transformer	400 x 400 x 755	806292UK	<b>£1,399</b>
TS 2000N with electronic control with integrated soap dispenser (500 ml) + transformer	400 x 400 x 755	806294UK	<b>£1,463</b>



806 302



806 304



## TS 2000N KNEE-OPERATED



Push button with oversized control paddle, positioned on front panel.

Description	Overall Dim. l x W x h(mm)	Reference	Price
TS 2000N knee-operated	400 x 440 x 755	806 321	<b>£670</b>
TS 2000N knee-operated + manual soap dispenser (500 ml)	400 x 440 x 755	806 322	<b>£734</b>
TS 2000N knee-operated + integrated soap dispenser (500 ml)	400 x 440 x 755	806 324	<b>£747</b>



806 321



806 322



806 324

## TS 2000N : EASIER INSTALLATION



### Easy fitting :

Thanks to the screw fixed wall mounting bracket which locates the bowl.  
Taps can be assembled before the bowl is installed.

This recess allows straightforward installation of the wash basin, regardless of the room taken up by the water inlet and evacuation pipes at the rear.





## G.A. WASH HAND BOWLS (KNEE OPERATED)

W.R.A.S. approved, stainless steel construction. Well Ø 275 mm, depth 115 mm. Knee-operated control. Mixer tap with non-return valve and temperature setting. Supplied with siphon and flexible connecting hose for connection of mitigated water to swan neck. Soap dispenser 500 ml.



"GA" hand wash bowl	Overall dim. l x W x h (mm)	Reference	Price
Without upstand	330 x 330 x 170	<u>806 331</u>	£271
With upstand	350 x 330 x 500	<u>806 332</u>	£291
With upstand and soap dispenser	350 x 330 x 500	<u>806 333</u>	£353

## G.C. WASH HAND BASINS (KNEE OPERATED)

W.R.A.S. approved, stainless steel construction. Well 345 x 245 mm, depth 120 mm. Mixer tap with non-return valves and temperature setting. Supplied with siphon and flexible connecting hose for connection of mitigated water to swan neck. Soap dispenser 500 ml.



### G.C. wash hand basin (knee operated)

Operated by push button behind control paddle on front.



"GC" hand wash-basin	Overall dim. l x W x h (mm)	Reference	Price
Without upstand	415 x 310 x 185	<u>806 381</u>	£298
With upstand height 540 mm	440 x 335 x 540	<u>806 382</u>	£348
With upstand height 540 mm and soap dispenser	440 x 335 x 540	<u>806 383</u>	£414
With upstand height 540 mm + soap dispenser and <b>stainless steel bin</b>	440 x 335 x 985	<u>806 397</u>	£603
With upstand height 790 mm	440 x 335 x 790	<u>806 384</u>	£367
With upstand height 790 mm, soap dispenser and paper towel dispenser	440 x 335 x 790	<u>806 385</u>	£503

### G.C. wash hand basin (electronic control)

Mixer tap, made in France, tripped by infrared detection cell.



"GC" hand wash-basin	Overall Dim. l x W x h (mm)	Reference	Price
Without upstand	415 x 310 x 185	<u>806 351</u>	£795
With upstand height 540 mm	440 x 335 x 540	<u>806 352</u>	£842
With upstand height 540 mm and soap dispenser	440 x 335 x 540	<u>806 353</u>	£905







# MOBILE WASH HAND BASINS (FOOT OPERATED)

Stainless steel construction. 2 fixed wheels and handle for easy moving.

Basin 345 x 245 mm, depth 115 mm. Foot control. 2 cans of 13 litres (one for clear water, one for waste water). Supplied with manual soap dispenser 500 ml, paper towel dispenser (one towel roll Ø 120 mm, length 208 mm, supplied), hook-on dustbin.

**Mobile foot operated wash hand basin, ref. 806 517:** electric foot pump powered by 2 batteries 6 V supplied.

**Mobile foot operated wash hand basin with built-in-water heater, ref. 806 519:** integrated electric water heater for instant hot water production. Selection button for continuous adjustment of cold water to hot water and vice versa (up to 45°C). Supplied with 230 V 16 amp connection. Power rating 3.7 kW. Operational stop facility to protect the water heater when there is no water in the jerrycan.



806 517



806 519



Description	Overall Dim. l x W x h (mm)	Reference	Price
Mobile foot operated wash hand basin	415 x 345 x 1200	806 517	£1,131
Mobile foot operated wash hand basin with built-in water heater	415 x 345 x 1200	806 519	£3,024

# JANITOR SINK STATIONS

The Tournus s/steel mop and bucket station is available either 600 or 700 mm deep, to suit differing mop bucket sizes.

The top tier features a formed steel basin and plug for mop rinsing, with a lower sink area for locating the bucket, whilst filling or emptying.

The lower sink area has a removable perforated steel trivet stand to locate the bucket on. Both zones can be filled from the swivel neck mono-bloc mixer tap. They are supplied with PVC basin trap and strainer waste overflow tube.



806 536

Description	Overall Dim. l x W x h (mm)	Reference	Price
Janitor sink (600mm wide)	500 x 600 x 890	<u>806 536</u>	£1,021
Janitor sink (700mm wide)	500 x 700 x 890	806 537	£1,521



# ACCESSORIES FOR TS 2000N / G.A. AND G.C. WASH HAND BASINS & BOWLS



806 396



806 395



230 552



230 553



230 554



230 469



806 314



806 350

Description	Overall dim. l x W x h (mm)	Reference	Price
Stainless steel wall dustbin	290 x 200 x 300	806 395	<b>£105</b>
Plastic wall dustbin	250 x 200 x 400	806 396	<b>£50</b>
Paper towel dispenser, capacity 250 towels (1)	280 x 130 x 370	230 552	<b>£72</b>
Box of 3000 towels, 30 packets of 100	300 x 290 x 145	230 398	<b>£181</b>
Paper towel dispenser for rolls Ø 120 mm	140 x 155 x 290	230 553	<b>£72</b>
Box of 12 paper towel rolls Ø 120 mm	h = 210	806 362	<b>£291</b>
Paper towel dispenser for rolls Ø 170 mm	210 x 220 x 320	230 554	<b>£106</b>
Box of 6 paper towel rolls Ø 170 mm	h = 195	806 364	<b>£137</b>
Nails brush on support		806 314	<b>£14</b>
Soap dispenser 500 ml	95 x 95 x 165	<u>230 469</u>	<b>£64</b>
Extra-cost for plug and brass tap + brass siphon		230 234	<b>£65</b>
Mixer tap with electronic control, flow rate 3l/mn		<u>230 507</u>	<b>£583</b>
<b>Knee-control kit:</b> control by rod + swan neck, flexible tube. Enables conversion an existing basin.		806 350	<b>£675</b>

(1) Attached to the upstand height 790 mm or the wall



# STERILIZING CABINETS

Stainless steel construction, rounded edges, transparent Plexiglass doors, stainless steel hinge, magnetic lock. Sloping top and bottom, interior support bar. Control button to outside of cabinet. Timer adjustable from 0 to 2 h. U.V. tube with automatic U.V. radiation cut-off system when door is opened. Index of protection IP 24. Voltage 230 V.



806 421



806 422

Description	Overall dim. l x W x h (mm)	Without key		With key	
		Ref.	Price	Ref.	Price
Lockable 1 door, 20 knife sterilizing cabinet (storage in folded slotted steel grid)	575 x 170 x 600	806421UK	<b>£646</b>	816421AS	<b>£710</b>
Lockable 1 door, 10 knife sterilizing cabinet (storage on magnetized bar)	575 x 170 x 600	806422UK	<b>£667</b>	816422AS	<b>£734</b>
Lockable 1 door, 20 knife sterilizing cabinet (storage in s/steel wire bar frame)	575 x 170 x 600	806423UK	<b>£699</b>	816423AS	<b>£758</b>
Lockable 2 door, 40 knife sterilizing cabinet (storage in s/steel wire bar frame)	1030 x 170 x 600	806424UK	<b>£1,131</b>	816424AS	<b>£1,227</b>

## UV tubes

Description	Reference	Price
Tube 15 W, length 440 mm for 575 mm (L) sterilizing cabinet	262 170	<b>£32</b>
Tube 30 W, length 900 mm for 1030 mm (L) sterilizing cabinet	262 172	<b>£49</b>



806 423



Looking door shown



806 424







# WASTE BAG HOLDERS & BINS

## Mobile bag holder features

Made of stainless steel 20 mm diameter tubing.. Very rigid bag support consisting of a 4 mm stainless steel flat bar and an elastic strap bag fixing system. Strong and reliable lid opening system consisting of a stainless steel pedal connected to a double stainless steel rod. Injection moulded polypropylene lid, rigid and silent in operation. 2 smooth wheels Ø 150 mm. Generously-sized manoeuvring handle. Rigid stainless steel surround with hinged door and latch.

Description	For bags (litres)	Height (mm)	Overall dim. l x W (mm)	Reference	Price
130L open frame bag holder (pedal lid)	100 - 130	900	450 x 535	804 465	£294
100L open frame bag holder (pedal lid)	50 - 100	700	450 x 535	804 464	£294
100L bag holder (pedal lid + steel surround)	100	900	450 x 535	804 468	£530
70L bag holder (pedal lid + steel surround)	70	700	450 x 535	804 467	£500
100L open frame bag holder (open neck)	50 - 100	800	450 x 505	804 460	£223

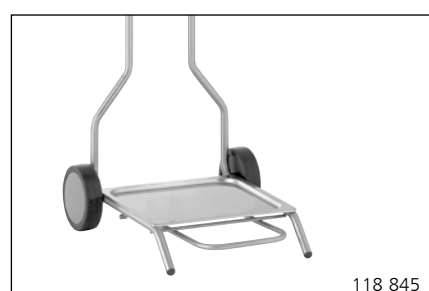
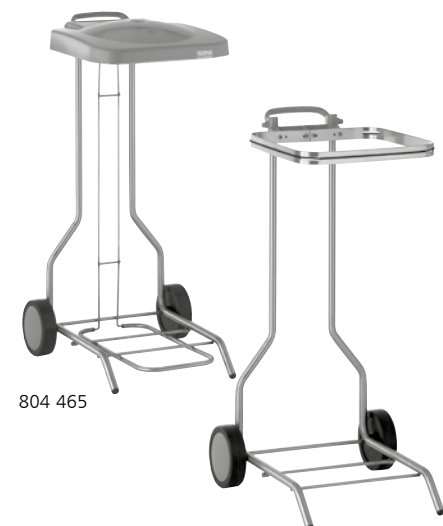
## Waste bag holders (pedal clip)

Stainless steel construction. 2 swivel wheels Ø 80 mm. 2 feet made of stainless steel tube with non-slip rubber pads to the front. Stainless steel base to support the bag. Clip consisting of 2 stainless steel plates covered in rubber. Pedal operated opening.

Description	For bags (litres)	Height (mm)	Overall dim. l x W (mm)	Reference	Price
100L waste bag holders (pedal clip)	100	810	450 x 535	804 452	£348
110L waste bag holders (pedal clip)	110	970	450 x 535	804 453	£357

Description	Reference	Price
<b>FOR MOBILE BAG HOLDERS</b>		
Open frame bag holder, bag support tray	118 845	£64
For sorting waste: 5 colours segregated waste labels	296 298	£28
<b>FOR MOBILE BAG HOLDERS WITHOUT SURROUND AND BAG HOLDERS WITH CLIP</b>		
Roll holder Ø 100 mm, height 250 mm (2)	804 476	£189

- (1) : Don't fit for bag holders with surround.  
(2) : Supplied with elastic strap bag fixing system





804 395

## Snack bar bin (hinged waste flap)

Waste bin for snack and fast food. Stainless steel construction. Top of unit fitted to take trays. Waste flap. Mobile stainless steel front with base at rear and very rigid flat surface 4 mm thick to hold bag. This device is designed for easy fitting and removal of the bag, held by an elastic strap.

Description	Capacity (litres)	Height (mm)	Overall dim l x W (mm)	Reference	Price
Snack bar bin (hinged waste flap)	110	1236	444 x 480	804 395	£2,041



804 405

## Cylindrical bin (pedal lid)

Stainless steel construction. Lid with pedal. 2 swivel wheels.

Description	Capacity (litres)	Height (mm)	Ø (mm)	Reference	Price
Cylindrical bin (pedal lid)	50	610	370	804 405	£435
Cylindrical bin (pedal lid)	100	720	450	804 407	£500



906 505

## Waste bin for fat and bones

Stainless steel construction. Open-ended cylinder, and an independant wheeled base. Lid with hook. 4 swivel wheels.

Description	Ø x H (mm)	Reference	Price
Waste bin for fat and bones, capacity 100 litres	470 x 755	906 505	£527

## Sanitary containers

Polyethylene body and lid + padlock. Capacity 60 litres.

Description	Ø x H (mm)	Reference	Price
"Seizure" sanitary container	400 x 650	804 426	£206
Sanitary container for SRM (specified risk materials)	400 x 650	804 425	£203
Mobile circular, wheel-base for sanitary container	425 x 125	906 519	£203



804 425



804 426



906 519

## BREAD MAKING UNITS



**Hygienic:**

Beech top to store pieces of dough or for natural proving in bread making.

**Ergonomical:**

Front door can be raised and stored under the work surface.

6 slide bar levels

## CATERING HIGH CUPBOARD

**Strength:**

Reinforced sliding doors, suspended from a rail fixed on the upper part, with stop-blocks.

**Modular:**

adjustable shelf

**Aesthetics :**

Flattened folds used throughout, on the front edge and shelves.









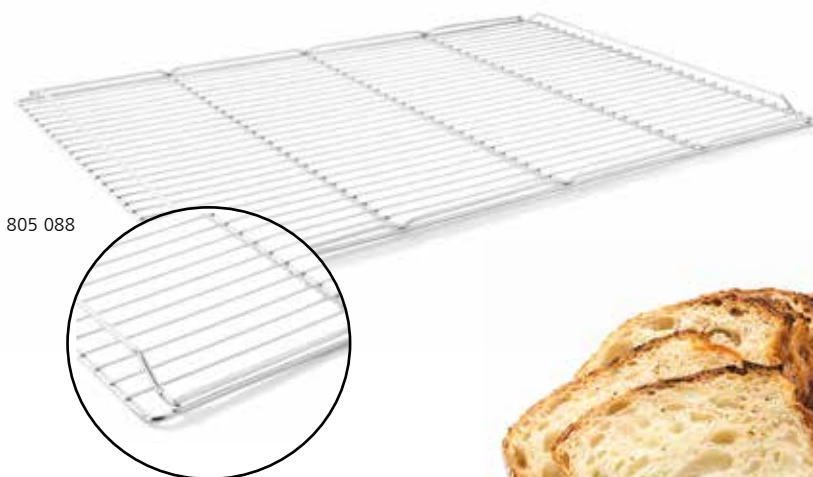
# BREAD MAKING UNITS

Stainless steel units, height 900 mm. Glued beech plywood top, 26 mm thick. Front door can be raised and stored under the work surface. 6 slide bar levels. 4 wheels Ø 125 mm with 2 brakes.



504 701

Description	Overall dim. L x P x H (mm)	Reference	Price
Bread making unit 800 x 600 mm	1025 x 800 x 900	504 700	<b>£3,861</b>
Bread making unit 900 x 700 mm	1025 x 800 x 900	504 701	<b>£3,871</b>
Stainless steel grids	800 x 600	805 087	<b>£72</b>
Stainless steel grids with reinforcements and stops	900 x 700	805 088	<b>£109</b>
Marine plywood	900 x 700 x 15	221 092	<b>£279</b>



805 088





## Wall shelves with racks

Stainless steel construction. Rack height: 1 tier 315 mm, 2 tier 700 mm, pitch 55 mm, fixed by screw. Adjustable trays, thickness 1.2 mm, rear upstand 50 mm high.

### WIDTH 290 MM



509 974

Overall dim. W x l (mm)	Shelf 1 tier		Shelf 2 tier	
	Reference	Price	Reference	Price
290 x 800	509 971	<b>£190</b>	509 986	<b>£355</b>
290 x 1000	509 972	<b>£193</b>	509 987	<b>£367</b>
290 x 1200	509 973	<b>£230</b>	509 988	<b>£435</b>
290 x 1400	509 974	<b>£230</b>	509 989	<b>£436</b>
290 x 1500	509 975	<b>£252</b>	509 990	<b>£501</b>
290 x 1600	509 976	<b>£264</b>	509 991	<b>£516</b>
290 x 1800	509 977	<b>£270</b>	509 992	<b>£503</b>
290 x 2000	509 978	<b>£261</b>	509 993	<b>£528</b>
290 x 2200	509 979	<b>£299</b>	509 994	<b>£582</b>

### WIDTH 390 MM



509 928

Overall dim. W x l (mm)	Shelf 1 tier		Shelf 2 tier	
	Reference	Price	Reference	Price
390 x 800	509 910	<b>£205</b>	509 925	<b>£367</b>
390 x 1000	509 911	<b>£208</b>	509 926	<b>£407</b>
390 x 1200	509 912	<b>£231</b>	509 927	<b>£422</b>
390 x 1400	509 913	<b>£231</b>	509 928	<b>£444</b>
390 x 1500	509 914	<b>£259</b>	509 929	<b>£493</b>
390 x 1600	509 915	<b>£259</b>	509 930	<b>£493</b>
390 x 1800	509 916	<b>£276</b>	509 931	<b>£531</b>
390 x 2000	509 917	<b>£277</b>	509 932	<b>£542</b>
390 x 2200	509 918	<b>£339</b>	509 933	<b>£640</b>

For other lengths: see price of the upper length.







## CATERING HIGH CUPBOARD

Stainless steel construction, height 1800 mm. Reinforced sliding doors, suspended from a rail fixed on the upper part, with stop-blocks. Horizontal top. 3 adjustable shelves. Polyamide leg with jacks (no exposed thread). Flattened folds used throughout on the front edge, shelves, handles and floor.



503 493

Description	Dimensions W x I (mm)	Reference	Price
High cupboard with sliding doors	600 x 1000	503 492	<b>£2,540</b>
High cupboard with sliding doors	600 x 1200	503 493	<b>£2,813</b>

Option: Lock for catering wall cabinets and catering units and catering high cupboard  
Ref.: 118 882 - Price **£51**

## CATERING CUPBOARD FOR CLEANING PRODUCTS

Stainless steel construction, height 1800 mm. Reinforced 1 or 2 hinged doors with key. Horizontal top. Vertical separation. 3 adjustable half shelves + 1 lower fixed shelf. Polyamide leg.



Description	Dimensions W x I (mm)	Reference	Price
Cupboard 1 door with vertical separation	500 x 600	503 481	<b>£1,708</b>
Cupboard 2 doors with vertical separation	500 x 1000	503 482	<b>£2,222</b>
Additional shelf 1 door		121 989	<b>£59</b>
Additional shelf 2 doors		121 990	<b>£70</b>





Head Office  
Lancashire

CED Fabrications Ltd  
Units A1-A4, Falcon Court  
Clayton Business Park  
Clayton-le-Moors,  
Hyndburn, Lancashire  
BB5 5JD

T: 01254 238 282  
F: 01254 238 228

T: 0151 545 2840

CED Fabrications Ltd,  
Units 4 & 5,  
Nexus Industrial Estate,  
Randles Road,, Knowsley  
Prescot,, Merseyside  
L34 9HX



Manufacturing Plant  
Merseyside



Manufacturing Plant  
Kent

CED Fabrications Ltd  
Building 3  
Sandwich Industrial Estate  
Sandwich, Kent  
CT13 9LY

T: 01304 617 377



Certificate Number 7895  
ISO 9001, ISO 14001

SALES LINE  
01254 238 282

All prices exclude VAT - Free delivery  
applies to all orders over £350. All  
orders under £350 incur a £40 charge.  
Deliveries to UK mainland ONLY.

w: [www.cedfabsltd.co.uk](http://www.cedfabsltd.co.uk)  
e: [sales@cedlimited.com](mailto:sales@cedlimited.com)



DOWNLOAD ALL  
TECHNICAL DRAWINGS  
from [www.cedfabsltd.co.uk](http://www.cedfabsltd.co.uk)

Distributor stamp